

Review

Connection Lost, MAM: Errors in ER–Mitochondria Connections in Neurodegenerative Diseases

Ashu Johri ^{*,†} and Abhishek Chandra [†]

Feil Family Brain and Mind Research Institute, Weill Cornell Medicine, New York, NY 10065, USA; abchandra2010@gmail.com

* Correspondence: johri.ashu@gmail.com

† Have resigned from the Institute.

Abstract: Mitochondria associated membranes (MAMs), as the name suggests, are the membranes that physically and biochemically connect mitochondria with endoplasmic reticulum. MAMs not only structurally but also functionally connect these two important organelles within the cell which were previously thought to exist independently. There are multiple points of communication between ER–mitochondria and MAMs play an important role in both ER and mitochondria functions such as Ca^{2+} homeostasis, proteostasis, mitochondrial bioenergetics, movement, and mitophagy. The number of disease-related proteins and genes being associated with MAMs has been continually on the rise since its discovery. There is an overwhelming overlap between the biochemical functions of MAMs and processes affected in neurodegenerative disorders such as Alzheimer’s disease (AD), Parkinson’s disease (PD), amyotrophic lateral sclerosis (ALS), and Huntington’s disease (HD). Thus, MAMs have received well-deserving and much delayed attention as modulators for ER–mitochondria communication and function. This review briefly discusses the recent progress made in this now fast developing field full of promise for very exciting future therapeutic discoveries.

Keywords: mitochondria associated membranes (MAMs); Alzheimer’s disease; Huntington’s disease; Parkinson’s disease; amyotrophic lateral sclerosis

Citation: Johri, A.; Chandra, A. Connection Lost, MAM: Errors in ER–Mitochondria Connections in Neurodegenerative Diseases. *Brain Sci.* **2021**, *11*, 1437. <https://doi.org/10.3390/brainsci11111437>

Academic Editor: Dominic Thyagarajan

Received: 7 October 2021
Accepted: 26 October 2021
Published: 28 October 2021

Publisher’s Note: MDPI stays neutral with regard to jurisdictional claims in published maps and institutional affiliations.



Copyright: © 2021 by the authors. Licensee MDPI, Basel, Switzerland. This article is an open access article distributed under the terms and conditions of the Creative Commons Attribution (CC BY) license (<http://creativecommons.org/licenses/by/4.0/>).

1. Introduction

The physical and functional communication between mitochondria and endoplasmic reticulum (ER) is achieved through close juxtaposition between the two organelles called as mitochondria-associated membranes (MAMs). MAMs are basically ER membranes closely apposed to mitochondria, which can be purified as distinct structures [1]. The tethering of a region of ER to mitochondria is reversible and several specific proteins are transiently localized in the MAM [2]. The tethering of the MAMs acts as a signaling hub for calcium (Ca^{2+}) and lipid transfer between ER and mitochondria. The MAMs are also sometimes referred to as the ER–mitochondrial lipid raft-like microdomains since these contain cholesterol and glycosphingolipids and play an important role in the regulation of phospholipid, cholesterol ester, fatty acid metabolism, and lipid droplet formation [3,4]. Cardiolipin is also found at these specialized microdomains at the contact sites of the IMM and OMM. The MAMs also regulate mitochondrial morphology (fusion–division) and motility, mitochondrial bioenergetics, and redox status and play a key role in the modulation of ER stress, proteostasis including autophagy, inflammasome signaling, and apoptosis and cell survival [5]. Despite the fluid nature of the MAMs, these are distinct sub-cellular compartments and there are certain basic components of the MAMs which include 1. Ca^{2+} ion channels located at the ER or at the outer mitochondrial membranes (OMM), e.g., inositol 1,4,5 triphosphate receptor (IP3R), 2. voltage-dependent anion channel (VDAC), 3. enzymes of the lipid biosynthetic pathways and lipid transfer

proteins, 4. various chaperones, e.g., glucose-regulated protein 75 (Grp75), calnexin (CNX), sigma 1 receptor (Sig-1R or σ 1R), 5. enzymes involved in ER redox regulation, and 6. protein kinases (Figure 1).

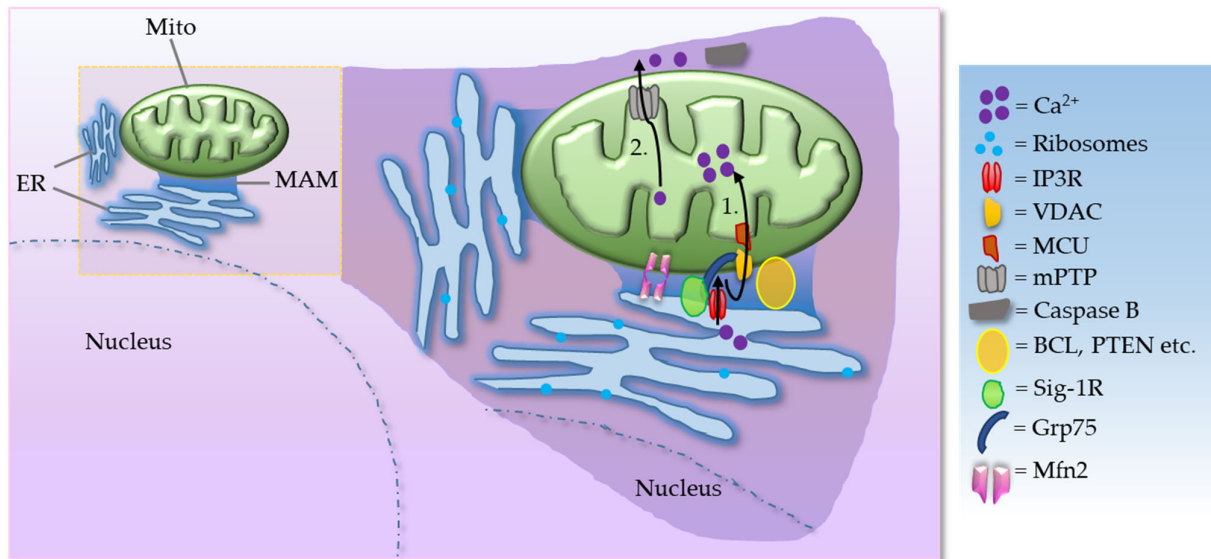


Figure 1. Simplified schematic diagram of basic components of the MAMs. Process 1, 2: Ca^{2+} transfer and apoptosis—shown in black arrows. ER acts as the main source and mitochondria as the sink for Ca^{2+} , while MAM has an essential role in Ca^{2+} trafficking. Ca^{2+} is mobilized through IP3R. IP3Rs located at the ER are one of the main Ca^{2+} -release channels and upon activation by IP3 can transfer Ca^{2+} to the mitochondria through an IP3R–VDAC–mitochondrial calcium uniporter (MCU) complex. In mammalian cells, IP3R forms a complex with Grp75 and VDAC to maintain ER–mitochondria contact sites. Additionally, mitofusin 2 (Mfn2) also serves as an important tether as described in the text. (Mito = mitochondria; mPTP = mitochondrial permeability transition pore; BCL = B-cell lymphoma 2 family of regulator proteins; PTEN = Phosphatase and tensin homolog).

The VDAC is a key component that mediates Ca^{2+} transport to mitochondria. VDAC interacts physically with IP3R, the ER Ca^{2+} release channel, through the molecular chaperone Grp75. The tripartite complex colocalizes on the MAM and directly enhances the mitochondrial Ca^{2+} uptake. Thus, the VDAC–Grp75–IP3R complex serves as an ER–mitochondria tether [6]. Additionally, deglycase (DJ-1) was recently shown to interact with VDAC, IP3R, and GRP75 [7,8]. Together, IP3R, VDAC, GRP75, and DJ-1 act as a tetramer complex to regulate the transfer of Ca^{2+} from the ER to the mitochondrial matrix via the mitochondrial calcium uniporter (MCU). Grp75 is a member of the heat shock protein 70 family that establishes local contact points between ER and mitochondria. This chaperone protein has a major role in maintaining crosstalk between the two organelles by coordinating the exchange and transfer of Ca^{2+} , and in driving subsequent signaling cascades. Grp75 achieves this crucial task through its interaction with both the IP3R and VDAC [6]. Grp75 knockdown and pharmacological inhibition reduced the number of interaction sites between IP3R and VDAC, and thereby reduced ER–mitochondrial coupling [9]. In the MAM, the Sig-1R acts as a molecular chaperone and sustains the proper conformation of the IP3R to ensure flawless Ca^{2+} signaling from the ER into mitochondria to facilitate the production of ATP [10]. Sig-1R binds cholesterol, governs ER lipid compartmentalization, protein trafficking, and Ca^{2+} flux at the MAM [11,12]. At the MAM, the Sig-1R also acts as a chaperone to an ER stress sensor, inositol-requiring enzyme 1 (IRE1), to ensure the proper transmission of ER stress into the nucleus, serving as a conduit between nucleus–ER–mitochondria and resulting in an enhanced production of anti-stress and antioxidant proteins [13]. Moreover, Sig-1R attenuates the formation of reactive oxygen species (ROS) by enhancing the signaling of nuclear factor erythroid 2-related factor 2 (Nrf2) [14]. Mitochondrial Rho (Miro) GTPases, Miro1 and Miro2, are

present in the MAMs and regulate normal mitochondrial cristae architecture, mitochondrial division, and the segregation of mitochondria and mitochondrial DNA (mtDNA) in newly generated mitochondrial tips at the ER–mitochondria contact sites [15]. Miro interacts with Mitofusins and the absence of Miro proteins leads to a decrease in contacts between the ER and mitochondria, which correlates with the alterations in mitochondrial Ca^{2+} uptake and in the intraluminal concentration of Ca^{2+} in the ER (Figure 2) [15]. There is evidence for the existence of a regulatory feedback mechanism that can control the number and composition of ER–mitochondrial contacts, depending on the activity of the MAM complexes. Moreover, interaction between Miro and Mfn2 is of interest also because Mfn2 tethers ER to mitochondria [16].

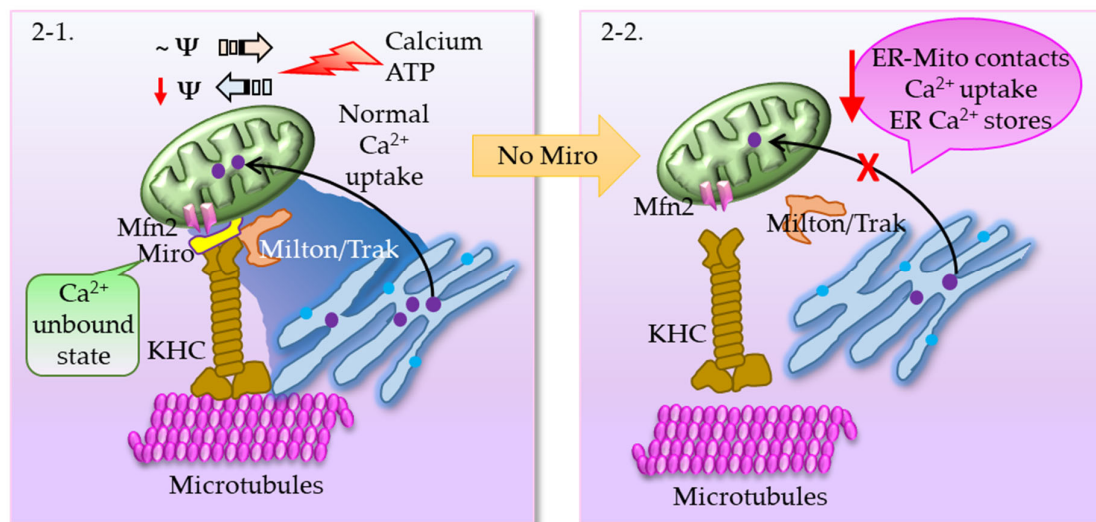


Figure 2. (2-1) Mitochondria move along the microtubules in response to changes in the local Ca^{2+} and ATP, in other words, buffering and metabolic demand. Mitochondria with normal membrane potential perform anterograde movement (move towards the periphery), whereas loss of membrane potential results in increased retrograde transport towards the cell body. The cargo adaptor proteins, mitochondrial Rho (Miro) GTPases and Milton, link mitochondria to microtubules via kinesin heavy chain (KHC). Miro binds Milton in a Ca^{2+} -unbound state, and thus mitochondria become attached to microtubules. When Miro binds Ca^{2+} , it is dislodged from Milton and mitochondria are uncoupled from microtubules. Moreover, Miro1 and Miro2 are required for normal mitochondrial cristae architecture, ER–mitochondria contact sites, and a normal Ca^{2+} uptake. (2-2) Absence of Miro results in decreased ER–mitochondria contacts, as a consequence of which ER/mitochondrial handling of Ca^{2+} is severely affected, and there is a significantly larger loss of Ca^{2+} from ER stores.

2. MAMs in Neurodegenerative Diseases

The cellular homeostatic functions that are regulated by MAMs are known to be affected in neurodegenerative diseases such as Amyotrophic lateral sclerosis (ALS), Alzheimer's disease (AD), Huntington's disease (HD), and Parkinson's disease (PD). Some of these overlapping abnormalities are briefly discussed below.

2.1. MAMs in Amyotrophic Lateral Sclerosis (ALS)

ALS is the most common form of motor neuron diseases, for which there is no cure and no effective disease-modifying treatments available. There is progressive muscle paralysis caused by degeneration of upper and lower motor neurons that communicate with the muscle cells. Mutations in the gene encoding for the antioxidant superoxide dismutase 1 (SOD1) and abnormalities found in genes such as TAR-DNA binding protein 43 (TDP43), fused in sarcoma (FUS), ubiquilin 2, vesicle-associated membrane protein B (VAPB), and valosin containing protein (VCP), are all associated with ALS. Among these, VAPB is an integral ER and MAM protein that interacts with protein tyrosine phosphatase-interacting protein-51 (PTPIP51) present in the OMM [17]. VAPB-PTPIP51

binding regulates ER–mitochondria associations while TDP-43 disrupts this binding leading to reduced ER–mitochondria interactions (Figure 3).

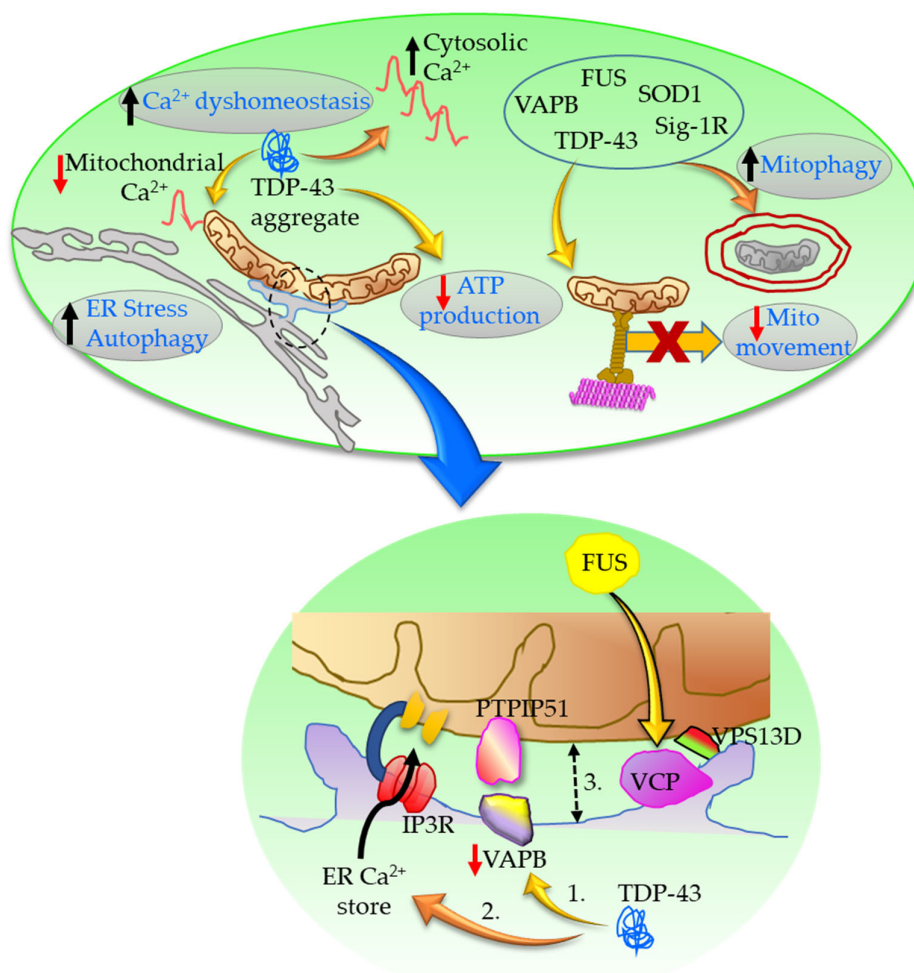


Figure 3. VAPB-PTPIP51 binding regulates ER–mitochondria associations in response to Ca^{2+} . In ALS: 1. TDP-43 reduces the amount of VAPB bound to PTPIP51; 2. TDP-43 produces Ca^{2+} dyshomeostasis following IP3R-mediated Ca^{2+} release from ER stores; 3. TDP-43 thus decreases ER–mitochondria associations. Ca^{2+} dyshomeostasis further results in reduced mitochondrial ATP production, impaired anterograde transport of mitochondria, and increased autophagy and ER stress. FUS interacts with VCP and alters VCP–vacuolar protein sorting-associated protein 13D (VPS13D) interactions at the MAM. Furthermore, TDP-43, SOD1, FUS, VAPB, and Sig-1R interact at the MAM to increase mitochondrial fission resulting in mitochondria with decreased membrane potential, and thus increase mitophagy.

TDP-43 increases cytosolic Ca^{2+} and decreases mitochondrial Ca^{2+} levels following IP3R-mediated Ca^{2+} release from ER stores, consistent with a decrease in ER–mitochondria associations [18]. These interruptions in cellular Ca^{2+} homeostasis have far reaching consequences as mitochondrial ATP production, anterograde transport of mitochondria, autophagy, and ER stress are all dependent on it in various ways and are altered in ALS [19–23]. Recently, the VAPB-PTPIP51 were shown to be present in neuronal synapses and to regulate synaptic activity and autophagy [24,25].

Vacuolar protein sorting-associated protein 13D (VPS13D) is a ubiquitously expressed protein that plays an important role in mitochondrial size, autophagy and clearance. VPS13D negatively regulates MAMs partially through its interactions with

VCP, an effect that could be reversed by VAPB-PTPIP51 [26]. Functionally, VPS13D suppression leads to severe defects in mitochondrial morphology, mitochondrial cellular distribution, and mitochondrial DNA synthesis. Interestingly, FUS, for which the gene is mutated in ALS, interacts with VCP [27]. These interactions may help explain some of the mitochondrial abnormalities seen in ALS. As mentioned in the 'Introduction', Sig-1R is a chaperone that plays important role in the ER-mitochondria Ca^{2+} signaling in MAM and in sensing ER stress. Mutations in Sig-1R were identified in patients with ALS and disruption of Sig-1R in mice led to motor disabilities similar to ALS [28,29]. The loss of function of Sig-1R in the motor neurons disturbed ER-mitochondria contacts, reduced intracellular Ca^{2+} signaling, stunned the axon extension, and was accompanied by activation of ER stress [30]. Disruption of Sig-1R in SOD1 mutant mice accelerated disease onset while also disrupting the integrity of the MAMs. Thus, collapse of the MAM is a common patho-mechanism in both Sig-1R- and SOD1-linked ALS [31]. Furthermore, there is selective enrichment of IP3R3 in motor neurons suggesting that integrity of the MAM is crucial for the selective vulnerability in ALS [31].

2.2. MAMs in Alzheimer's Disease (AD)

AD is the leading cause of dementia among older adults and has a complex etiopathology [32,33]. It is characterized by the accumulation of amyloid β ($\text{A}\beta$) plaques and intracytoplasmic neurofibrillary tangles mostly composed of hyperphosphorylated tau. AD is a progressive disease with advancing age being the most crucial risk factor. There is progressive neuronal loss, particularly in the cerebral cortex and hippocampus, which leads to cognitive impairment. The enzymes β - and γ -secretases cleave amyloid precursor protein (APP), to generate the $\text{A}\beta$ peptide. Parallely, presenilin-1 (PS1) and presenilin-2 (PS2) are enzymatically active components of γ secretase complex contributing to the generation of $\text{A}\beta$ peptide. Apolipoprotein E is a regulator of lipid metabolism that has an affinity for $\text{A}\beta$ and is another genetic marker that increases the risk of AD. Mutations in APP, PS1, PS2, and apolipoprotein E4 (ApoE4) are associated with an increased risk for and/or as causative factors in AD. Lipid and Ca^{2+} dyshomeostasis, increased levels of circulating cholesterol and mitophagy, impaired mitochondrial dynamics and bioenergetics, and altered glucose metabolism are implicated in AD often preceding appearance of distinct $\text{A}\beta$ plaques and tau tangles, as well as before cognitive dysfunction. The disruption of MAM has been implicated in AD pathology, as it is a common denominator in lipid and glucose metabolism, Ca^{2+} homeostasis, ER stress, and mitochondrial function and dynamics [34].

Direct evidence for involvement of the MAM in AD comes from studies demonstrating that cleaved, active forms of the PSs and γ -secretase activity are localized predominantly in the MAM, where PS1 and PS2 interact directly with IP3R, and mutated PS1 and PS2 open IP3R channel flooding intracellular Ca^{2+} and also stimulate $\text{A}\beta$ production [35–38]. The reverse is also true, that is, a genetic reduction of the IP3R by 50%, normalized the exaggerated Ca^{2+} signaling observed in cortical and hippocampal neurons in two mouse models of familial AD. Reduction of IP3R also attenuated $\text{A}\beta$ accumulation and tau hyperphosphorylation, and rescued hippocampal long-term potentiation and memory deficit in triple transgenic (3xTg) mice [39]. There is a higher degree of apposition between ER and mitochondria, and MAM-localized functions are significantly increased in cellular and animal models of AD and in cells from patients with AD, which may help explain the higher circulatory levels of cholesterol, lipid droplets, and increased phospholipid synthesis in AD (Figure 4) [40].

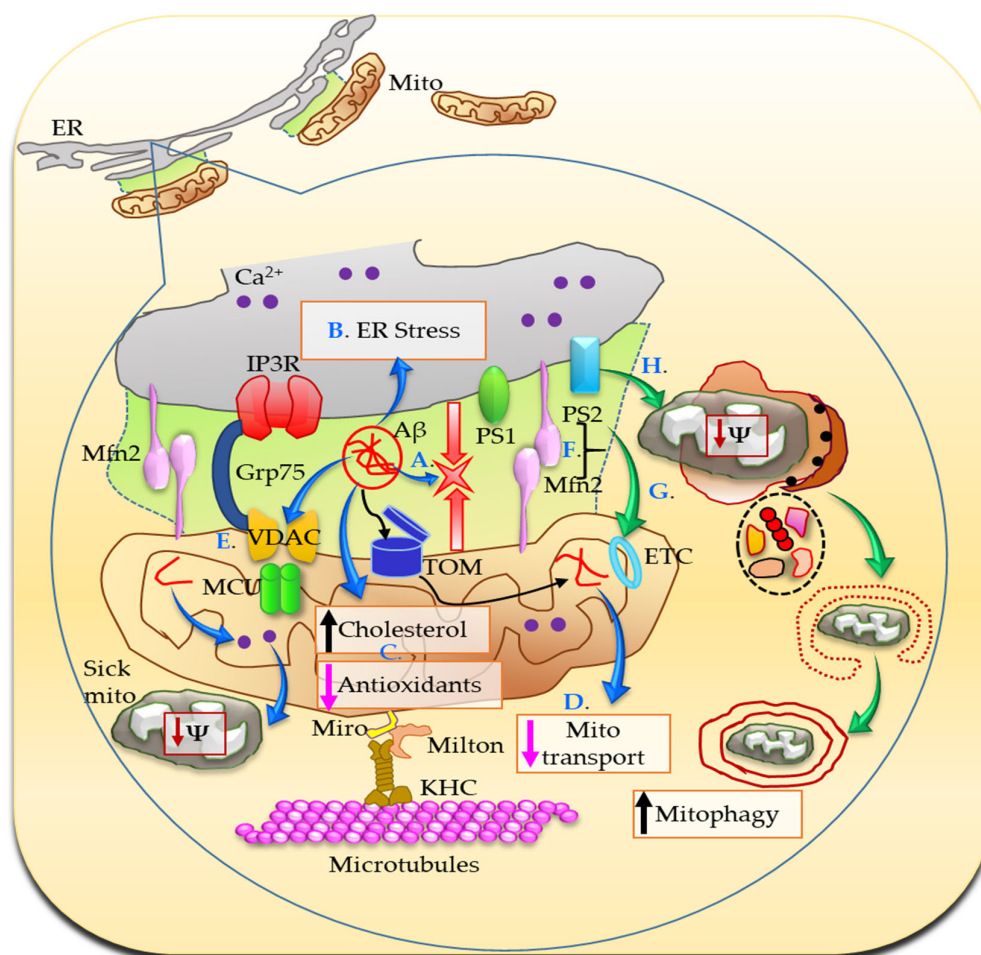


Figure 4. In AD, the MAMs are more abundant and are involved in Aβ production, which further increases ER-mitochondria juxtaposition (A). The translocase of the outer membrane (TOM) situated in the OMM serves as the Aβ transport machinery into the mitochondria. Aβ triggers ER stress (B) and promotes mitochondrial cholesterol accumulation and antioxidant depletion (C). Mutated PS1 and PS2 open IP3R channel flooding intracellular Ca²⁺ and also stimulate Aβ production (not shown). Aβ mediated higher degree of apposition between ER and mitochondria produces exaggerated Ca²⁺ signaling, which further results in abnormal mitochondrial transport (D). Moreover, Aβ, phosphorylated tau, and γ-secretase interact with VDAC resulting in a cascade of toxic effects, including mitochondrial dysfunction and eventually cell death, during the course of AD development and progression (E). Furthermore, PS2 and Mfn2 coordinate to increase ER-mitochondria coupling (F). The excessive Ca²⁺ is toxic for cells especially under stress conditions and over long periods of time, modulates electron transport system (ETC) and increases mitophagy (G,H).

In mouse neuroblastoma cell line (N2A) overexpressing the APP familial Swedish mutation (APP^{swe}), Fernandes et al. observed alterations in the MAM composition, ER-mitochondria Ca²⁺ transfer, and decreased mitochondrial dynamics and function [41]. Increased juxtaposition of ER and mitochondria results in increased Ca²⁺ signaling. A direct relationship between altered Ca²⁺ homeostasis at the MAM and the amyloidogenic cascade has been stipulated, where Ca²⁺ directly interacts with and enhances the proteolytic activity of the β-site amyloid precursor protein cleaving enzyme 1 (BACE1; required for the production of the Aβ peptide), exacerbates Aβ formation, and promotes tau hyperphosphorylation [42–44]. At the presynaptic terminals, an increased release of Ca²⁺ from the ER stores can undermine synaptic plasticity. Increased Ca²⁺ handling causes the activation of signaling cascades through the modulation of kinases and phosphatases activities, thus affecting synaptic plasticity and cognitive function in AD [42–44]. Severe cellular Ca²⁺ overload is highly toxic, causing massive activation of proteases and phospholipases, promoting cell death. Ca²⁺ phosphate precipitates result in swollen

mitochondria and damage the cells. Persistent, excessive intracellular Ca^{2+} causes enhanced Ca^{2+} cycling across the mitochondrial membranes, collapse of the proton gradient, and bioenergetic catastrophe [45]. Moreover, Ca^{2+} binding to cyclophilin D positively regulates mitochondrial permeability transition pore (mPTP) opening and in turn cell death. Once opened, mPTP allows the release of apoptotic factors, residing in the intermembrane space, which can trigger apoptosis by both a caspase-dependent and a caspase-independent pathway [46].

$\text{A}\beta$ triggers ER stress and promotes cholesterol synthesis and mitochondrial cholesterol accumulation followed by mitochondrial glutathione depletion (Figure 4). ER stress inhibitor 4-phenylbutyric acid prevents these [47]. A proteomics study revealed changes in proteins involved in cholesterol metabolism, in suppressing $\text{A}\beta$ accumulation, ER-associated protein degradation (ERAD), oxidative stress response, mitochondrial protein transport, and ATP production. The interaction network analysis revealed a strong relationship between the detected MAM protein changes and AD which preceded the onset of dementia-like symptoms in the APP/PS1 model [48]. Aberrant mitochondrial dynamics, defects in mitochondrial distribution, transport, and morphology could all be attributed to an error in Ca^{2+} -mediated mitochondrial function and ER–MAM connection by $\text{A}\beta$ (Figure 4) [34,49]. Additionally, VDAC is a hub protein that interacts with more than 150 other proteins, including phosphorylated tau, $\text{A}\beta$, and γ -secretase, contributing to their toxic effects, triggering cell death and potentially leading to the dysfunction of mitochondria during the course of AD development and progression [50,51]. Genetic deletion or knockdown of presenilins alters many autophagy-related proteins resulting in a buildup of autophagosomes and presenilin-deficient cells inefficiently clear long-lived proteins [52]. Mutated PS2 impairs autophagy by causing a block in the degradative flux at the level of the autophagosome-lysosome fusion step. This block is due to PS2's ability to partially deplete ER Ca^{2+} content, thus reducing cytosolic Ca^{2+} response upon IP3-linked cell stimulations [53]. PS2 and Mfn2 work in tandem to modulate ER–mitochondria coupling. Mfn2 depletion or its binding to PS2 increases tethering between the two organelles as is observed in AD. The strengthened Ca^{2+} crosstalk, under certain conditions such as cellular stress and over long periods of time, may alter bioenergetics functions and/or increase mitochondria-dependent cell death (Figure 4) [54]. The Sig-1R was previously implicated in the pathogenesis of AD: knockdown of Sig-1R caused neurodegeneration and the levels of Sig-1R were found to be reduced in the brain of patients with AD [55]. Thus, there is no ambivalence regarding the important role that MAMs play in AD pathology.

2.3. MAMs in Parkinson's Disease (PD)

PD is the second most prevalent neurodegenerative disorder after AD, afflicting millions of people worldwide. The disease is characterized by loss of dopaminergic neurons of the substantia nigra pars compacta in ventral mid-brain and accumulation of intra-cytoplasmic fibrillary inclusions, called Lewy bodies, mainly composed of the aggregated and misfolded protein α -synuclein (α -syn). Although prevalently cytosolic, α -syn is present in MAMs as shown by Guardia-Laguarta et al. in cell lines and brain tissue from humans and mice [56]. This study further showed that α -syn at MAM modulates mitochondrial morphology downstream of the mitochondrial fusion/fission machinery. PD-related mutations in human α -syn were shown to inhibit this behavior and result in its reduced association with MAM, coincident with a lower degree of apposition of ER with mitochondria, a decrease in MAM function, and an increase in mitochondrial fragmentation [56]. The effect of PD-related mutations in preventing α -syn from exerting its activity at the MAM was attributed to the increased propensity for aggregation of mutant proteins indicating a physical hindrance of MAM functions by mutant α -syn [57].

Mutations in several other genes (PARK2 (Parkin), PARK6 (phosphatase and tensin homolog (PTEN)-induced kinase 1—PINK1), PARK7 (DJ-1), PARK8 (leucine rich repeat kinase 2—LRRK2), PARK9 (ATP13A2)) are implicated as a causal factor in familial PD,

although most cases of PD are sporadic. Reduced mitochondrial function and dynamics is a cellular hallmark in PD brains and other PD models containing mutations in α -syn as well as other genes mentioned above. Loss-of-function mutations in DJ-1 (PARK7) are associated with autosomal recessive early onset PD. DJ-1 modulates mitochondrial Ca^{2+} transients induced upon cell stimulation with an IP₃ agonist by favoring the ER–mitochondria tethering. On the other hand, a reduction of DJ-1 levels results in mitochondria fragmentation and decreased mitochondrial Ca^{2+} uptake in stimulated cells [58]. Liu et al. showed that DJ-1 is localized to MAM where it physically interacts with and is an essential component of the IP₃R-Grp75-VDAC complexes [8]. DJ-1 ablation disrupted the IP₃R-Grp75-VDAC complex and reduced ER–mitochondria association. Similar deficits in IP₃R-Grp75-VDAC complexes and MAM were found in the brain of DJ-1 knockout mice *in vivo*. Moreover, DJ-1 levels were reduced in the substantia nigra of sporadic PD patients, which was associated with reduced IP₃R-DJ-1 interaction and ER–mitochondria association [8].

Interrelationship between Miro, PINK1, Parkin, and Mitophagy

Since the balance of sick vs. healthy mitochondria is a major deciding factor for whether the cell lives or dies, and because the interplay of the factors involved is complex, we thought this section deserves a special mention. Miro is a molecular rheostat that interacts with a broad array of regulatory ER-OMM partners that include PS2-MFN2, B Cell Receptor Associated Protein 31 (BAP31)-fission 1 (Fis1), IP₃R-VDAC, VAPB-PTPIP51, and oxysterol-binding protein (OSBP)-related proteins (ORP5/8)-PTPIP51. It helps in regulating Ca^{2+} in the ER lumen through IP₃R-VDAC, facilitates metabolism of phospholipids by exchanging lipid transfer proteins via ORP5/8, and is involved in pro-apoptotic pathways via BAP31-Fis1. Parkin is a cytosolic E3 ubiquitin ligase that is mutated in familial forms of PD. The gene encoding PINK1, a serine/threonine kinase, is also mutated in other autosomal recessive cases of PD. PINK1 acts as a molecular sensor of damaged mitochondria (reduced mitochondrial membrane potential/ROS damage) and selectively activates and recruits Parkin to only those mitochondria within a cell that have incurred damage. Together, PINK1 and Parkin act as a mitochondrial surveillance machine to ensure neuronal health. Mutations in PINK1 that are found in PD patients fail to recruit Parkin. Mitophagy, i.e., the selective degradation of mitochondria by the autophagosome, is induced by energetic imbalance or by depolarization of mitochondria. Dissipation of mitochondrial membrane potential impedes the translocation of PINK1 via the translocase of the inner membrane (TIM) channel, resulting in the accumulation of PINK1 in the OMM. Upon damage, PINK1 accumulates on the OMM but is unable to phosphorylate Miro until another PD-related protein, LRRK2, phosphorylates Miro. After Miro is phosphorylated by LRRK2, PINK1 is activated by autophosphorylation and activates the downstream Parkin protein that ubiquitinates several mitochondrial membrane-associated proteins including the ion channel VDAC, the translocase of the outer membrane (TOM) 20, Mfn1, Mfn2, and the Miro protein. Degradation of Miro is an essential step to arrest mitochondrial movement prior to mitophagy. Miro is phosphorylated by PINK1 followed by ubiquitination by Parkin, thus targeting Miro for proteasomal degradation and subsequent mitochondrial clearance via mitophagy.

Effects of Parkin overexpression on ER–mitochondria crosstalk were earlier studied with respect to the regulation of two key cellular parameters: Ca^{2+} homeostasis and ATP production [59]. Parkin overexpression physically and functionally enhanced ER–mitochondria coupling, favored Ca^{2+} transfer from the ER to the mitochondria following stimulation with an IP₃ generating agonist, and increased the agonist-induced ATP production. Whereas, Parkin silencing caused mitochondrial fragmentation, impaired mitochondrial Ca^{2+} handling, and reduced the ER–mitochondria tethering [59]. Perturbations in MAM were shown in primary fibroblasts from Parkin knockout mice and PD patients with PARK2 mutations, specifically ER and mitochondria were in closer proximity and Ca^{2+} flux to cytosol and Mfn2 (involved in ER–mitochondria tethering)

were increased [60]. Reduction of Mfn2 and increase in Parkin were both able to reverse these alterations. Another independent study observed an increase in contacts between mitochondria and the ER in both flies and cultured human fibroblasts from PD patients with PINK1 or Parkin mutations [61]. In a *Drosophila* model, loss of PINK1 or Parkin led to the activation of ER stress through a direct interaction between mitochondria and the ER, promoted by increased levels of *Drosophila* Mfn. As mentioned previously, Mfn2 forms complexes that tether mitochondria to ER, and Mfn2 is a target for Parkin mediated ubiquitination [16,62]. In this context, it is interesting to note that in Parkin deficient cells and Parkin mutant human fibroblasts, the tether between ER and mitochondria is decreased. Moreover, a non-ubiquitinatable Mfn2 mutant fails to restore ER–mitochondria physical and functional interactions [62]. Furthermore, Mfn2 gates the autophagic turnover of mitochondria by PINK1 and Parkin, and PD-related LRRK2 mutations impair depolarization-induced mitophagy through inhibition of mitochondrial accumulation of LRRK2 substrate indicating that Mfn2, LRRK2, PINK1, and Parkin all converge on a common pathway of mitophagy [63–65]. During mitophagy, PINK1–Parkin catalyze a rapid increase in Mfn2 ubiquitination, removing Mfn2 tether to dislodge mitochondria from ER; MAMs tear apart, and the reduction in ER–mitochondria appositions increases the rate of mitochondrial degradation. Additionally, it was shown that following mitophagic stimuli, PINK1 interacts with the proautophagic protein Beclin1 and colocalizes with it at the MAM [66]. Together Beclin 1 and PINK1 promote the enhancement of ER–mitochondria contact sites and the formation of omegasomes that represent autophagosome precursors. This study also highlighted that Parkin is also enhanced at the MAM following mitophagy induction and that PINK1 acts upstream of Parkin [66]. Recently, it was stipulated that LRRK2 plays a role in ER–mitochondrial tethering where it regulates the activities of E3 ubiquitin ligase Parkin among others via kinase-dependent protein–protein interactions [67]. It is relevant to mention here that mitophagy is compromised in PD patients and various models of PD, which may be attributed to the above mentioned complex interactions between PINK1, Parkin, Mfn2, LRRK2, and other factors at the MAM [68].

Another potential point of interference of MAM in PD is the dopamine receptors (DR) and Sig-1R interactions. DRs play crucial roles in many neurological processes, including motivation, cognition, memory, and motor function. Heterodimerization of Sig-1R and dopamine D1 receptor (D1R) and D2R has been reported in vitro and in vivo [69]. In a mouse model of experimental Parkinsonism (intrastriatal 6-hydroxydopamine lesions) gradual and significant improvement of motor performance was observed following treatment with a selective Sig-1R agonist [70]. The behavioral recovery was paralleled by an increased density of dopaminergic fibers in the most denervated striatal regions, by a modest recovery of dopamine levels, and by an upregulation of neurotrophic factors (brain-derived neurotrophic factor (BDNF) and glial cell line-derived neurotrophic factor (GDNF)) and their downstream effector pathways (extracellular signal regulated kinases 1/2 and protein kinase B (Akt)). Further, this agonist treatment also caused a wider intracellular distribution of Sig-1Rs, presumably due to the agonist-induced Sig-1R translocation. As expected, these beneficial effects were ablated in Sig-1R knockout mice [70]. These results suggest that Sig-1R regulates endogenous defense and plasticity mechanisms.

2.4. MAMs in Huntington's Disease (HD)

HD is an incurable autosomal-dominant progressive neurodegenerative disease for which the cause is known for years and it is an expansion of the cytosine–adenine–guanine (CAG) repeats in the coding sequence of the mutant huntingtin gene. The product, mutant huntingtin protein, is prone to proteolytic cleavage, misfolding, and aggregation. HD is characterized by selective degeneration of gamma-aminobutyric acid (GABA)-ergic medium spiny neurons in the striatum, although other brain regions are known to be affected later in the course of the disease. In HD, mitochondrial dysfunction

and energy impairments occur before overt pathological symptoms and appear to be central in driving the progression of the disease. At the same time, mitochondrial fission/fusion alterations, including Mfn1, Mfn2, optic atrophy 1 (Opa1), dynamin-related protein 1 (Drp1), mitochondrial movements, and mitochondrial Ca^{2+} handling are affected in HD and have been well investigated and described [71–78]. It was shown that mutant huntingtin binds to IP3R and causes sensitization of IP3R to activation by IP3 in planar lipid bilayers and in primary medium spiny neurons, the neuronal population affected foremost in HD. Moreover, a connection between abnormal Ca^{2+} signaling and apoptosis of medium spiny neurons was shown in primary culture from a YAC128 HD mouse model expressing the full-length mutant human huntingtin gene [79]. The medium spiny neurons are extremely sensitive to changes in the cytoplasmic concentration of Ca^{2+} and its excessive increase leads to their death. Recently, targeting Sig-1R through a drug based on its agonists has been suggested as an approach to normalize the balance of Ca^{2+} in striatal neurons [80]. Pridopidine is one such selective Sig-1R agonist, currently in clinical development for HD and ALS. Pridopidine has the capacity to be a dopamine buffer, although it has been reported that pridopidine has a 100-fold greater affinity for the Sig-1R than for the D2 receptor. Pridopidine prevents the disruption of mitochondria–ER contact sites and improves the co-localization of IP3R and Sig-1R in primary neurons from YAC128 HD mice, leading to increased mitochondrial activity, elongation, and motility [81]. These effects were associated with an increase in mitochondrial respiration in pridopidine-treated YAC128 HD neurons and human HD neural stem cells. YAC128 neurons, human HD neural stem cells, and human HD lymphoblasts show increased ROS levels and deficient antioxidant response, which are efficiently rescued with pridopidine. Moreover, YAC128 HD mice treated at early/pre-symptomatic age with pridopidine showed significant improvement in motor coordination [81]. These studies show that pridopidine treatment results in neuroprotective effect, which is manifested as an increase in the plasticity of synaptic neurons and prevention of their atrophy within the striatum and provide proof-of-concept for MAM targeted therapies in HD [82–85]. Interestingly, Sig-1R itself accumulates in neuronal inclusions containing mutant huntingtin where it likely increases proteasome activity and mutant huntingtin degradation [86].

Since HD pathology has multiple intersections with the impairment in peroxisome proliferator-activated receptor (PPAR)- γ coactivator-1 α (PGC-1 α), a transcriptional master co-regulator of mitochondrial biogenesis, metabolism, and antioxidant defenses, it is tempting to speculate that PGC-1 α at the ER–mitochondria interface has an important role to play, just waiting to be explored. PGC-1 α ablation in mice shows HD-like pathology in brown adipose tissue and striatum as well as motor abnormalities similar to HD [87,88]. In HD, PGC-1 α levels and activity are reduced in the brain and peripheral tissues from patients and transgenic models [89–91]. Parkin controls the expression of PGC-1 α and PGC-1 α target gene nuclear respiratory factor-1 (NRF-1), via Parkin interacting substrate (PARIS) by binding to insulin response sequences in the PGC-1 α promoter [92]. Parkin and PGC-1 α functionally interact to regulate the turnover and quality of mitochondria, by increasing both mitophagic activity and mitochondrial biogenesis, exceeding the effects seen with PGC-1 α alone [93]. Co-expression of PGC-1 α and Parkin increases the number of mitochondria and maximal respiration and accelerates the recovery of the mitochondrial membrane potential following mitochondrial uncoupling in cortical neurons. Moreover, PGC-1 α increases the turnover of Mfn2 by increasing both its transcription as well as degradation via ubiquitylation by Parkin on mitochondria. Of particular interest are the studies showing Parkin and PGC-1 α together have neuroprotective effects and control the density of mitochondria, and also control the interaction of mitochondria with the ER [93].

Chronic ER stress is a side effect of mutant huntingtin since it inhibits ER-associated degradation, ER/Golgi vesicular trafficking and axonal transport, and disrupts autophagy and ER Ca^{2+} homeostasis resulting in disturbance of protein folding and maturation pathways at the ER [94–96]. Reducing misfolded protein accumulation in the ER reduces

ER stress and is protective in HD. As another point of intersection between ALS and HD, VCP is sequestered by mutant huntingtin and its overexpression resolved ER-associated degradation and ER stress [97]. Since mutant huntingtin aggregates directly interact with both mitochondria and ER, it is pertinent to assume that mutant huntingtin functionally and physically interferes with factors at MAM. It was demonstrated in several models of HD that VCP selectively translocates to mitochondria where it binds mutant huntingtin, causing excessive mitophagy and neuronal death [98]. Modulating VCP-mutant huntingtin interaction with small molecule therapeutics has protective effects in HD mouse- and patient-derived cells and HD transgenic mouse brains [98–100].

3. Conclusions and Future Directions

The MAMs serve as important crossover points for the information relay between ER and mitochondria, and regulate many functions of mitochondria, including maintaining Ca^{2+} balance, mitochondria shape, size and dynamics, and play an indispensable role in cell survival. There is vast literature on these functions being affected in neurodegeneration and mysteries are just beginning to unravel. Despite the apparent dissimilarities in clinical presentations of AD, PD, HD, and ALS, the MAM dysfunction appears to be a common denominator at the mechanistic level. Moreover, there are structural and functional factors involved at the MAM that are commonly perturbed in all the neurodegenerative diseases that are discussed in this review (Figure 5).

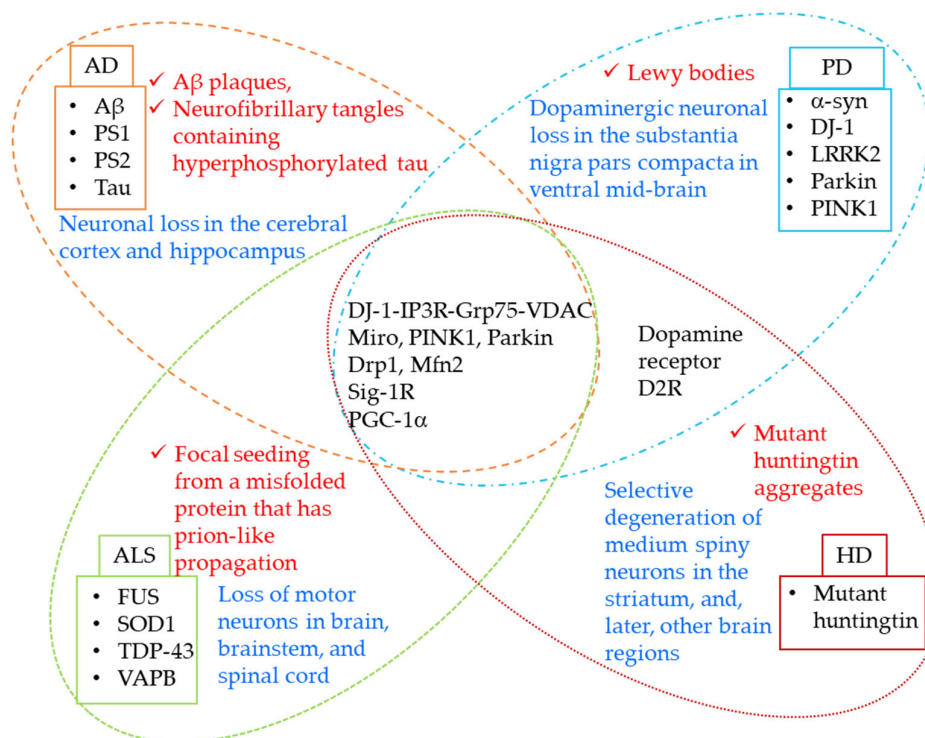


Figure 5. Although certain factors are different, there are significant overlaps between AD, PD, HD, and ALS when it comes to ER–MAM–mitochondria interactions. Apart from obvious endgame similarities i.e., Ca^{2+} dyshomeostasis, ETC complex disturbances, increased fission/fusion, mitophagy, antioxidant depletion, ROS, ER stress and apoptosis, and reduced mitochondrial movement, mechanistic commonalities include alterations in the following: 1. DJ-1-IP3R-Grp75-VDAC tetrameric complex. DJ-1 interacts with IP3R-Grp75-VDAC and is an essential part of the complex. The release of Ca^{2+} from ER is mediated via this complex; 2. Sig-1R, IP3R, D2R interactions. Sig-1R interacts with Dopamine receptors and regulates plasticity mechanisms; 3. Miro, PINK1, Parkin, and Mfn2 together regulate mitophagy and ER–mitochondria connections; 4. PGC-1α is altered in all these diseases and interacts with both Parkin and Mfn2, thus it is logical to speculate a role of this important cofactor at the MAMs. Proteins mutated in each of the diseases are shown in their respective boxes. Neuropathological hallmarks of each disease are given in red, while the selective neuronal population affected is shown in blue.

Persistent alterations in Ca^{2+} flux to cytosol, and in the proteins involved in ER-mitochondria tethering, e.g., Mfn2, Sig-1R, etc., are detrimental to the cell [101]. At the same time, direct targeting of these factors at the MAM using agonists or antagonists provides therapeutic opportunities for these devastating illnesses [102]. For example, manipulation of ER-mitochondria contacts using an ER-mitochondria synthetic linker rescues the locomotor deficit in a *Drosophila* model of PD [62]. Since ER-mitochondria associations at the MAM (lipid raft-like microdomains) are central in correct folding as well as distribution of mature proteins to the appropriate locations within the cell, it is tempting to speculate that the misfolding and aggregation of the various mutated proteins (e.g., mutant huntingtin in HD, α -synuclein in PD, etc.) starts at the MAM. Targeting MAM thus presents a viable and attractive therapeutic opportunity.

Correcting mitochondrial bioenergetics, biogenesis, and dynamics (fission, fusion, motility) through PGC-1 α mediated pathways is another potential therapeutic avenue. PGC-1 α is altered in all four diseases, and PGC-1 α ablation is detrimental to both, the ER as well as the mitochondria [87,88,103,104]. In addition to the well described mitochondrial abnormalities, PGC-1 α deletion in mice results in altered ER morphology, and fragmented cisternae with disrupted stack arrangement. Additionally, PGC-1 α alters the MAM contacts between the ER and the mitochondria [103]. PGC-1 α , together with Parkin, controls Mfn1, Mfn2, and VDAC, as well as the density, quality, and turnover of mitochondria and their interaction with the ER [93]. These, in turn, affect behavior, cognition, and neuronal survival. There are various ways to modulate PGC-1 α function including, diet, exercise, caloric restriction, and small molecule mediated therapies [91,105–107]. Another approach to enhancing cell survival is to reduce Parkin-mediated excessive mitophagy by reducing the ubiquitination of mitochondrial outer membrane proteins Mfn, VDAC, Fis1, and TOM20. Progress has been made to identify such de-ubiquitinating enzymes (DUBs) that oppose Parkin in the ubiquitination of its targets [108]. Such enzymes may be crucial in developing specific isopeptidase modulators that will help maintain healthy mitochondria and prevent overactive mitophagy.

The open question, however, remains whether MAM dysfunction is causally linked to the disease pathogenesis in AD, PD, HD, and ALS. Another critical turning point is the dynamic nature of the MAMs owing to which detailed molecular maps need to be further characterized in the context of various cell types. This will help in identifying putative drug candidates for disease-specific treatments. Nevertheless, in view of the importance of the MAMs for essential functions and survival of the neurons, along with the initial findings of neuroprotection imparted by targeting the MAMs, it is only a matter of time before the light at the end of the tunnel becomes a reality in terms of an effective therapy for some of these incurable diseases.

Author Contributions: A.J. and A.C. contributed equally to the research and writing of the manuscript. All authors have read and agreed to the published version of the manuscript.

Funding: This research received no external funding.

Institutional Review Board Statement: Not applicable.

Informed Consent Statement: Not applicable.

Conflicts of Interest: A.J.: Independent Researcher, Formerly: Assistant Professor, Feil Family Brain and Mind Research Institute, Weill Cornell Medicine, New York, NY 10065, USA; A.C.: Independent Researcher, Formerly: Postdoctoral Research Associate, Feil Family Brain and Mind Research Institute, Weill Cornell Medicine, New York, NY 10065, USA.

References

- Rusinol, A.E.; Cui, Z.; Chen, M.H.; Vance, J.E. A unique mitochondria-associated membrane fraction from rat liver has a high capacity for lipid synthesis and contains pre-Golgi secretory proteins including nascent lipoproteins. *J. Biol. Chem.* **1994**, *269*, 27494–27502.
- Vance, J.E. MAM (mitochondria-associated membranes) in mammalian cells: Lipids and beyond. *Biochim. Biophys. Acta* **2014**, *1841*, 595–609, <https://doi.org/10.1016/j.bbali.2013.11.014>.
- Sorice, M.; Mattei, V.; Tasciotti, V.; Manganello, V.; Garofalo, T.; Misasi, R. Trafficking of PrPc to mitochondrial raft-like microdomains during cell apoptosis. *Prion* **2012**, *6*, 354–358, <https://doi.org/10.4161/pri.20479>.
- Area-Gomez, E.; Schon, E.A. On the Pathogenesis of Alzheimer's Disease: The MAM Hypothesis. *FASEB J.* **2017**, *31*, 864–867, <https://doi.org/10.1096/fj.201601309>.
- van Vliet, A.R.; Verfaillie, T.; Agostinis, P. New functions of mitochondria associated membranes in cellular signaling. *Biochim. Biophys. Acta* **2014**, *1843*, 2253–2262, <https://doi.org/10.1016/j.bbamcr.2014.03.009>.
- Szabadkai, G.; Bianchi, K.; Varnai, P.; De Stefani, D.; Wieckowski, M.R.; Cavagna, D.; Nagy, A.I.; Balla, T.; Rizzuto, R. Chaperone-mediated coupling of endoplasmic reticulum and mitochondrial Ca²⁺ channels. *J. Cell Biol.* **2006**, *175*, 901–911, <https://doi.org/10.1083/jcb.200608073>.
- Basso, V.; Marchesan, E.; Ziviani, E. A trio has turned into a quartet: DJ-1 interacts with the IP3R-Grp75-VDAC complex to control ER-mitochondria interaction. *Cell Calcium* **2020**, *87*, 102186, <https://doi.org/10.1016/j.ceca.2020.102186>.
- Liu, Y.; Ma, X.; Fujioka, H.; Liu, J.; Chen, S.; Zhu, X. DJ-1 regulates the integrity and function of ER-mitochondria association through interaction with IP3R3-Grp75-VDAC1. *Proc. Natl. Acad. Sci. USA* **2019**, *116*, 25322–25328, <https://doi.org/10.1073/pnas.1906565116>.
- Honrath, B.; Metz, I.; Bendridi, N.; Rieusset, J.; Culmsee, C.; Dolga, A.M. Glucose-regulated protein 75 determines ER-mitochondrial coupling and sensitivity to oxidative stress in neuronal cells. *Cell Death Dis.* **2017**, *3*, 17076, <https://doi.org/10.1038/cddiscovery.2017.76>.
- Hayashi, T.; Su, T.P. Sigma-1 receptor chaperones at the ER-mitochondrion interface regulate Ca²⁺ signaling and cell survival. *Cell* **2007**, *131*, 596–610, <https://doi.org/10.1016/j.cell.2007.08.036>.
- Hayashi, T.; Su, T.P. Sigma-1 receptors (sigma(1) binding sites) form raft-like microdomains and target lipid droplets on the endoplasmic reticulum: Roles in endoplasmic reticulum lipid compartmentalization and export. *J. Pharmacol. Exp. Ther.* **2003**, *306*, 718–725, <https://doi.org/10.1124/jpet.103.051284>.
- Ryskamp, D.A.; Korbán, S.; Zhemkov, V.; Kraskovskaya, N.; Bezprozvanny, I. Neuronal Sigma-1 Receptors: Signaling Functions and Protective Roles in Neurodegenerative Diseases. *Front. Neurosci.* **2019**, *13*, 862, <https://doi.org/10.3389/fnins.2019.00862>.
- Mori, T.; Hayashi, T.; Hayashi, E.; Su, T.P. Sigma-1 receptor chaperone at the ER-mitochondrion interface mediates the mitochondrion-ER-nucleus signaling for cellular survival. *PLoS ONE* **2013**, *8*, e76941, <https://doi.org/10.1371/journal.pone.0076941>.
- Wang, J.; Shanmugam, A.; Markand, S.; Zorrilla, E.; Ganapathy, V.; Smith, S.B. Sigma 1 receptor regulates the oxidative stress response in primary retinal Muller glial cells via NRF2 signaling and system x_c⁻, the Na⁺-independent glutamate-cystine exchanger. *Free Radic. Biol. Med.* **2015**, *86*, 25–36, <https://doi.org/10.1016/j.freeradbiomed.2015.04.009>.
- Modi, S.; Lopez-Domenech, G.; Halff, E.F.; Covill-Cooke, C.; Ivankovic, D.; Melandri, D.; Arancibia-Carcamo, I.L.; Burden, J.J.; Lowe, A.R.; Kittler, J.T. Miro clusters regulate ER-mitochondria contact sites and link cristae organization to the mitochondrial transport machinery. *Nat. Commun.* **2019**, *10*, 4399, <https://doi.org/10.1038/s41467-019-12382-4>.
- de Brito, O.M.; Scorrano, L. Mitofusin 2 tethers endoplasmic reticulum to mitochondria. *Nature* **2008**, *456*, 605–610, <https://doi.org/10.1038/nature07534>.
- De Vos, K.J.; Morotz, G.M.; Stoica, R.; Tudor, E.L.; Lau, K.F.; Ackerley, S.; Warley, A.; Shaw, C.E.; Miller, C.C. VAPB interacts with the mitochondrial protein PTPIP51 to regulate calcium homeostasis. *Hum. Mol. Genet.* **2012**, *21*, 1299–1311, <https://doi.org/10.1093/hmg/ddr559>.
- Stoica, R.; De Vos, K.J.; Paillusson, S.; Mueller, S.; Sancho, R.M.; Lau, K.F.; Vizcay-Barrena, G.; Lin, W.L.; Xu, Y.F.; Lewis, J.; et al. ER-mitochondria associations are regulated by the VAPB-PTPIP51 interaction and are disrupted by ALS/FTD-associated TDP-43. *Nat. Commun.* **2014**, *5*, 3996, <https://doi.org/10.1038/ncomms4996>.
- Griffiths, E.J.; Rutter, G.A. Mitochondrial calcium as a key regulator of mitochondrial ATP production in mammalian cells. *Biochim. Biophys. Acta* **2009**, *1787*, 1324–1333, <https://doi.org/10.1016/j.bbabi.2009.01.019>.
- Ludtmann, M.H.R.; Arber, C.; Bartolome, F.; de Vicente, M.; Preza, E.; Carro, E.; Houlden, H.; Gandhi, S.; Wray, S.; Abramov, A.Y. Mutations in valosin-containing protein (VCP) decrease ADP/ATP translocation across the mitochondrial membrane and impair energy metabolism in human neurons. *J. Biol. Chem.* **2017**, *292*, 8907–8917, <https://doi.org/10.1074/jbc.M116.762898>.
- Le Gall, L.; Anakor, E.; Connolly, O.; Vijayakumar, U.G.; Duddy, W.J.; Duguez, S. Molecular and Cellular Mechanisms Affected in ALS. *J. Pers. Med.* **2020**, *10*, 10, <https://doi.org/10.3390/jpm10030101>.
- Morotz, G.M.; De Vos, K.J.; Vagnoni, A.; Ackerley, S.; Shaw, C.E.; Miller, C.C. Amyotrophic lateral sclerosis-associated mutant VAPBP56S perturbs calcium homeostasis to disrupt axonal transport of mitochondria. *Hum. Mol. Genet.* **2012**, *21*, 1979–1988, <https://doi.org/10.1093/hmg/dds011>.
- Ghemrawi, R.; Khair, M. Endoplasmic Reticulum Stress and Unfolded Protein Response in Neurodegenerative Diseases. *Int. J. Mol. Sci.* **2020**, *21*, 6127, <https://doi.org/10.3390/ijms21176127>.

24. Gomez-Suaga, P.; Paillusson, S.; Stoica, R.; Noble, W.; Hanger, D.P.; Miller, C.C.J. The ER-Mitochondria Tethering Complex VAPB-PTPIP51 Regulates Autophagy. *Curr. Biol.* **2017**, *27*, 371–385, <https://doi.org/10.1016/j.cub.2016.12.038>.
25. Gomez-Suaga, P.; Perez-Nievas, B.G.; Glennon, E.B.; Lau, D.H.W.; Paillusson, S.; Morotz, G.M.; Cali, T.; Pizzo, P.; Noble, W.; Miller, C.C.J. The VAPB-PTPIP51 endoplasmic reticulum-mitochondria tethering proteins are present in neuronal synapses and regulate synaptic activity. *Acta Neuropathol. Commun.* **2019**, *7*, 35, <https://doi.org/10.1186/s40478-019-0688-4>.
26. Du, Y.; Wang, J.; Xiong, J.; Fang, N.; Ji, W.K. VPS13D interacts with VCP/p97 and negatively regulates endoplasmic reticulum-mitochondria interactions. *Mol. Biol. Cell* **2021**, *32*, 1474–1486, <https://doi.org/10.1091/mbc.E21-03-0097>.
27. Wang, T.; Jiang, X.; Chen, G.; Xu, J. Interaction of amyotrophic lateral sclerosis/frontotemporal lobar degeneration-associated fused-in-sarcoma with proteins involved in metabolic and protein degradation pathways. *Neurobiol. Aging* **2015**, *36*, 527–535, <https://doi.org/10.1016/j.neurobiolaging.2014.07.044>.
28. Luty, A.A.; Kwok, J.B.; Dobson-Stone, C.; Loy, C.T.; Coupland, K.G.; Karlstrom, H.; Sobow, T.; Tchorzewska, J.; Maruszak, A.; Barcikowska, M.; et al. Sigma nonopioid intracellular receptor 1 mutations cause frontotemporal lobar degeneration-motor neuron disease. *Ann. Neurol.* **2010**, *68*, 639–649, <https://doi.org/10.1002/ana.22274>.
29. Mavlyutov, T.A.; Baker, E.M.; Losenegger, T.M.; Kim, J.R.; Torres, B.; Epstein, M.L.; Ruoho, A.E. The Sigma-1 Receptor-A Therapeutic Target for the Treatment of ALS? *Adv. Exp. Med. Biol.* **2017**, *964*, 255–265, https://doi.org/10.1007/978-3-319-50174-1_17.
30. Bernard-Marissal, N.; Medard, J.J.; Azzedine, H.; Chrast, R. Dysfunction in endoplasmic reticulum-mitochondria crosstalk underlies SIGMAR1 loss of function mediated motor neuron degeneration. *Brain* **2015**, *138*, 875–890, <https://doi.org/10.1093/brain/aww008>.
31. Watanabe, S.; Ilieva, H.; Tamada, H.; Nomura, H.; Komine, O.; Endo, F.; Jin, S.; Mancias, P.; Kiyama, H.; Yamanaka, K. Mitochondria-associated membrane collapse is a common pathomechanism in SIGMAR1- and SOD1-linked ALS. *EMBO Mol. Med.* **2016**, *8*, 1421–1437, <https://doi.org/10.15252/emmm.201606403>.
32. Alzheimer's, A. 2016 Alzheimer's disease facts and figures. *Alzheimers Dement.* **2016**, *12*, 459–509, <https://doi.org/10.1016/j.jalz.2016.03.001>.
33. Kumar, A.; Sidhu, J.; Goyal, A.; Tsao, J.W. *Alzheimer Disease*; StatPearls: Treasure Island, FL, USA, 2021.
34. Schon, E.A.; Area-Gomez, E. Is Alzheimer's disease a disorder of mitochondria-associated membranes? *J. Alzheimers Dis.* **2010**, *20* (Suppl. S2), S281–S292, <https://doi.org/10.3233/JAD-2010-100495>.
35. Walter, J.; Capell, A.; Grunberg, J.; Pesold, B.; Schindzielorz, A.; Prior, R.; Podlisny, M.B.; Fraser, P.; Hyslop, P.S.; Selkoe, D.J.; et al. The Alzheimer's disease-associated presenilins are differentially phosphorylated proteins located predominantly within the endoplasmic reticulum. *Mol. Med.* **1996**, *2*, 673–691.
36. Annaert, W.G.; Levesque, L.; Craessaerts, K.; Dierinck, I.; Snellings, G.; Westaway, D.; George-Hyslop, P.S.; Cordell, B.; Fraser, P.; De Strooper, B. Presenilin 1 controls gamma-secretase processing of amyloid precursor protein in pre-golgi compartments of hippocampal neurons. *J. Cell Biol.* **1999**, *147*, 277–294, <https://doi.org/10.1083/jcb.147.2.277>.
37. Cheung, K.H.; Shineman, D.; Muller, M.; Cardenas, C.; Mei, L.; Yang, J.; Tomita, T.; Iwatsubo, T.; Lee, V.M.; Finkbeiner, S.; et al. Mechanism of Ca²⁺ disruption in Alzheimer's disease by presenilin regulation of InsP3 receptor channel gating. *Neuron* **2008**, *58*, 871–883, <https://doi.org/10.1016/j.neuron.2008.04.015>.
38. Area-Gomez, E.; de Groof, A.J.; Boldogh, I.; Bird, T.D.; Gibson, G.E.; Koehler, C.M.; Yu, W.H.; Duff, K.E.; Yaffe, M.P.; Pon, L.A.; et al. Presenilins are enriched in endoplasmic reticulum membranes associated with mitochondria. *Am. J. Pathol.* **2009**, *175*, 1810–1816, <https://doi.org/10.2353/ajpath.2009.090219>.
39. Shilling, D.; Muller, M.; Takano, H.; Mak, D.O.; Abel, T.; Coulter, D.A.; Finkbeiner, S.; et al. Suppression of InsP3 receptor-mediated Ca²⁺ signaling alleviates mutant presenilin-linked familial Alzheimer's disease pathogenesis. *J. Neurosci.* **2014**, *34*, 6910–6923, <https://doi.org/10.1523/JNEUROSCI.5441-13.2014>.
40. Area-Gomez, E.; Del Carmen Lara Castillo, M.; Tambini, M.D.; Guardia-Laguarta, C.; de Groof, A.J.; Madra, M.; Ikenouchi, J.; Umeda, M.; Bird, T.D.; Sturley, S.L.; et al. Upregulated function of mitochondria-associated ER membranes in Alzheimer disease. *EMBO J.* **2012**, *31*, 4106–4123, <https://doi.org/10.1038/emboj.2012.202>.
41. Fernandes, T.; Resende, R.; Silva, D.F.; Marques, A.P.; Santos, A.E.; Cardoso, S.M.; Domingues, M.R.; Moreira, P.I.; Pereira, C.F. Structural and Functional Alterations in Mitochondria-Associated Membranes (MAMs) and in Mitochondria Activate Stress Response Mechanisms in an In Vitro Model of Alzheimer's Disease. *Biomedicines* **2021**, *9*, 881, <https://doi.org/10.3390/biomedicines9080881>.
42. Wang, X.; Zheng, W. Ca²⁺ homeostasis dysregulation in Alzheimer's disease: A focus on plasma membrane and cell organelles. *FASEB J.* **2019**, *33*, 6697–6712, <https://doi.org/10.1096/fj.201801751R>.
43. Chami, M.; Checler, F. Alterations of the Endoplasmic Reticulum (ER) Calcium Signaling Molecular Components in Alzheimer's Disease. *Cells* **2020**, *9*, 2577, <https://doi.org/10.3390/cells9122577>.
44. Yu, W.; Jin, H.; Huang, Y. Mitochondria-associated membranes (MAMs): A potential therapeutic target for treating Alzheimer's disease. *Clin. Sci.* **2021**, *135*, 109–126, <https://doi.org/10.1042/CS20200844>.
45. Pinton, P.; Giorgi, C.; Siviero, R.; Zecchini, E.; Rizzuto, R. Calcium and apoptosis: ER-mitochondria Ca²⁺ transfer in the control of apoptosis. *Oncogene* **2008**, *27*, 6407–6418, <https://doi.org/10.1038/onc.2008.308>.
46. Amanakis, G.; Murphy, E. Cyclophilin D: An Integrator of Mitochondrial Function. *Front. Physiol.* **2020**, *11*, 595, <https://doi.org/10.3389/fphys.2020.00595>.

47. Barbero-Camps, E.; Fernandez, A.; Baulies, A.; Martinez, L.; Fernandez-Checa, J.C.; Colell, A. Endoplasmic reticulum stress mediates amyloid beta neurotoxicity via mitochondrial cholesterol trafficking. *Am. J. Pathol.* **2014**, *184*, 2066–2081, <https://doi.org/10.1016/j.ajpath.2014.03.014>.
48. Volgyi, K.; Badics, K.; Sialana, F.J.; Gulyassy, P.; Udvari, E.B.; Kis, V.; Drahos, L.; Lubec, G.; Kekesi, K.A.; Juhasz, G. Early Presymptomatic Changes in the Proteome of Mitochondria-Associated Membrane in the APP/PS1 Mouse Model of Alzheimer's Disease. *Mol. Neurobiol.* **2018**, *55*, 7839–7857, <https://doi.org/10.1007/s12035-018-0955-6>.
49. Reddy, P.H.; Yin, X.; Manczak, M.; Kumar, S.; Pradeepkiran, J.A.; Vijayan, M.; Reddy, A.P. Mutant APP and amyloid beta-induced defective autophagy, mitophagy, mitochondrial structural and functional changes and synaptic damage in hippocampal neurons from Alzheimer's disease. *Hum. Mol. Genet.* **2018**, *27*, 2502–2516, <https://doi.org/10.1093/hmg/ddy154>.
50. Manczak, M.; Reddy, P.H. Abnormal interaction of VDAC1 with amyloid beta and phosphorylated tau causes mitochondrial dysfunction in Alzheimer's disease. *Hum. Mol. Genet.* **2012**, *21*, 5131–5146, <https://doi.org/10.1093/hmg/dds360>.
51. Shoshan-Barmatz, V.; Nahon-Crystal, E.; Shteinfer-Kuzmine, A.; Gupta, R. VDAC1, mitochondrial dysfunction, and Alzheimer's disease. *Pharmacol. Res.* **2018**, *131*, 87–101, <https://doi.org/10.1016/j.phrs.2018.03.010>.
52. Neely, K.M.; Green, K.N.; LaFerla, F.M. Presenilin is necessary for efficient proteolysis through the autophagy-lysosome system in a gamma-secretase-independent manner. *J. Neurosci.* **2011**, *31*, 2781–2791, <https://doi.org/10.1523/JNEUROSCI.5156-10.2010>.
53. Fedeli, C.; Filadi, R.; Rossi, A.; Mammucari, C.; Pizzo, P. PSEN2 (presenilin 2) mutants linked to familial Alzheimer disease impair autophagy by altering Ca²⁺ homeostasis. *Autophagy* **2019**, *15*, 2044–2062, <https://doi.org/10.1080/15548627.2019.1596489>.
54. Filadi, R.; Greotti, E.; Turacchio, G.; Luini, A.; Pozzan, T.; Pizzo, P. Presenilin 2 Modulates Endoplasmic Reticulum-Mitochondria Coupling by Tuning the Antagonistic Effect of Mitofusin 2. *Cell Rep.* **2016**, *15*, 2226–2238, <https://doi.org/10.1016/j.celrep.2016.05.013>.
55. Hedskog, L.; Pinho, C.M.; Filadi, R.; Ronnback, A.; Hertwig, L.; Wiehager, B.; Larssen, P.; Gellhaar, S.; Sandebring, A.; Westerlund, M.; et al. Modulation of the endoplasmic reticulum-mitochondria interface in Alzheimer's disease and related models. *Proc. Natl. Acad. Sci. USA* **2013**, *110*, 7916–7921, <https://doi.org/10.1073/pnas.1300677110>.
56. Guardia-Laguarta, C.; Area-Gomez, E.; Rub, C.; Liu, Y.; Magrane, J.; Becker, D.; Voos, W.; Schon, E.A.; Przedborski, S. alpha-Synuclein is localized to mitochondria-associated ER membranes. *J. Neurosci.* **2014**, *34*, 249–259, <https://doi.org/10.1523/JNEUROSCI.2507-13.2014>.
57. Cali, T.; Ottolini, D.; Vicario, M.; Catoni, C.; Vallese, F.; Cieri, D.; Barazzuol, L.; Brini, M. splitGFP Technology Reveals Dose-Dependent ER-Mitochondria Interface Modulation by alpha-Synuclein A53T and A30P Mutants. *Cells* **2019**, *8*, 1072, <https://doi.org/10.3390/cells8091072>.
58. Ottolini, D.; Cali, T.; Negro, A.; Brini, M. The Parkinson disease-related protein DJ-1 counteracts mitochondrial impairment induced by the tumour suppressor protein p53 by enhancing endoplasmic reticulum-mitochondria tethering. *Hum. Mol. Genet.* **2013**, *22*, 2152–2168, <https://doi.org/10.1093/hmg/ddt068>.
59. Cali, T.; Ottolini, D.; Negro, A.; Brini, M. Enhanced parkin levels favor ER-mitochondria crosstalk and guarantee Ca(2+) transfer to sustain cell bioenergetics. *Biochim. Biophys. Acta* **2013**, *1832*, 495–508, <https://doi.org/10.1016/j.bbadis.2013.01.004>.
60. Gautier, C.A.; Erpapazoglou, Z.; Mouton-Liger, F.; Muriel, M.P.; Cormier, F.; Bigou, S.; Duffaure, S.; Girard, M.; Foret, B.; Iannielli, A.; et al. The endoplasmic reticulum-mitochondria interface is perturbed in PARK2 knockout mice and patients with PARK2 mutations. *Hum. Mol. Genet.* **2016**, *25*, 2972–2984, <https://doi.org/10.1093/hmg/ddw148>.
61. Celardo, I.; Costa, A.C.; Lehmann, S.; Jones, C.; Wood, N.; Mencacci, N.E.; Mallucci, G.R.; Loh, S.H.; Martins, L.M. Mitofusin-mediated ER stress triggers neurodegeneration in pink1/parkin models of Parkinson's disease. *Cell Death Dis.* **2016**, *7*, e2271, <https://doi.org/10.1038/cddis.2016.173>.
62. Basso, V.; Marchesan, E.; Peggion, C.; Chakraborty, J.; von Stockum, S.; Giacomello, M.; Ottolini, D.; Debattisti, V.; Caicci, F.; Tasca, E.; et al. Regulation of ER-mitochondria contacts by Parkin via Mfn2. *Pharmacol. Res.* **2018**, *138*, 43–56, <https://doi.org/10.1016/j.phrs.2018.09.006>.
63. Wauters, F.; Cornelissen, T.; Imberechts, D.; Martin, S.; Koentjoro, B.; Sue, C.; Vangheluwe, P.; Vandenberghe, W. LRRK2 mutations impair depolarization-induced mitophagy through inhibition of mitochondrial accumulation of RAB10. *Autophagy* **2020**, *16*, 203–222, <https://doi.org/10.1080/15548627.2019.1603548>.
64. Bonello, F.; Hassoun, S.M.; Mouton-Liger, F.; Shin, Y.S.; Muscat, A.; Tesson, C.; Lesage, S.; Beart, P.M.; Brice, A.; Krupp, J.; et al. LRRK2 impairs PINK1/Parkin-dependent mitophagy via its kinase activity: Pathologic insights into Parkinson's disease. *Hum. Mol. Genet.* **2019**, *28*, 1645–1660, <https://doi.org/10.1093/hmg/ddz004>.
65. McLelland, G.L.; Goiran, T.; Yi, W.; Dorval, G.; Chen, C.X.; Lauinger, N.D.; Krahn, A.I.; Valimehr, S.; Rakovic, A.; Rouiller, I.; et al. Mfn2 ubiquitination by PINK1/parkin gates the p97-dependent release of ER from mitochondria to drive mitophagy. *Elife* **2018**, *7*, e32866, <https://doi.org/10.7554/eLife.32866>.
66. Gelmetti, V.; De Rosa, P.; Torosantucci, L.; Marini, E.S.; Romagnoli, A.; Di Rienzo, M.; Arena, G.; Vignone, D.; Fimia, G.M.; Valente, E.M. PINK1 and BECN1 relocate at mitochondria-associated membranes during mitophagy and promote ER-mitochondria tethering and autophagosome formation. *Autophagy* **2017**, *13*, 654–669, <https://doi.org/10.1080/15548627.2016.1277309>.
67. Toyofuku, T.; Okamoto, Y.; Ishikawa, T.; Sasawatari, S.; Kumanogoh, A. LRRK2 regulates endoplasmic reticulum-mitochondrial tethering through the PERK-mediated ubiquitination pathway. *EMBO J.* **2020**, *39*, e100875, <https://doi.org/10.15252/embj.2018100875>.

68. Liu, J.; Liu, W.; Li, R.; Yang, H. Mitophagy in Parkinson's Disease: From Pathogenesis to Treatment. *Cells* **2019**, *8*, 712, <https://doi.org/10.3390/cells8070712>.
69. Navarro, G.; Moreno, E.; Aymerich, M.; Marcellino, D.; McCormick, P.J.; Mallol, J.; Cortes, A.; Casado, V.; Canela, E.I.; Ortiz, J.; et al. Direct involvement of sigma-1 receptors in the dopamine D1 receptor-mediated effects of cocaine. *Proc. Natl. Acad. Sci. USA* **2010**, *107*, 18676–18681, <https://doi.org/10.1073/pnas.1008911107>.
70. Francardo, V.; Bez, F.; Wieloch, T.; Nissbrandt, H.; Ruscher, K.; Cenci, M.A. Pharmacological stimulation of sigma-1 receptors has neurorestorative effects in experimental parkinsonism. *Brain* **2014**, *137*, 1998–2014, <https://doi.org/10.1093/brain/awu107>.
71. Milakovic, T.; Quintanilla, R.A.; Johnson, G.V. Mutant huntingtin expression induces mitochondrial calcium handling defects in clonal striatal cells: Functional consequences. *J. Biol. Chem.* **2006**, *281*, 34785–34795, <https://doi.org/10.1074/jbc.M603845200>.
72. Kim, J.; Moody, J.P.; Edgerly, C.K.; Bordiuk, O.L.; Cormier, K.; Smith, K.; Beal, M.F.; Ferrante, R.J. Mitochondrial loss, dysfunction and altered dynamics in Huntington's disease. *Hum. Mol. Genet.* **2010**, *19*, 3919–3935, <https://doi.org/10.1093/hmg/ddq306>.
73. Costa, V.; Giacomello, M.; Hudec, R.; Lopreiato, R.; Ermak, G.; Lim, D.; Malorni, W.; Davies, K.J.; Carafoli, E.; Scorrano, L. Mitochondrial fission and cristae disruption increase the response of cell models of Huntington's disease to apoptotic stimuli. *EMBO Mol. Med.* **2010**, *2*, 490–503, <https://doi.org/10.1002/emmm.201000102>.
74. Song, W.; Chen, J.; Petrilli, A.; Liot, G.; Klinglmayr, E.; Zhou, Y.; Poquiz, P.; Tjong, J.; Pouladi, M.A.; Hayden, M.R.; et al. Mutant huntingtin binds the mitochondrial fission GTPase dynamin-related protein-1 and increases its enzymatic activity. *Nat. Med.* **2011**, *17*, 377–382, <https://doi.org/10.1038/nm.2313>.
75. Reddy, P.H. Increased mitochondrial fission and neuronal dysfunction in Huntington's disease: Implications for molecular inhibitors of excessive mitochondrial fission. *Drug Discov. Today* **2014**, *19*, 951–955, <https://doi.org/10.1016/j.drudis.2014.03.020>.
76. Hering, T.; Kojer, K.; Birth, N.; Hallitsch, J.; Taanman, J.W.; Orth, M. Mitochondrial cristae remodelling is associated with disrupted OPA1 oligomerisation in the Huntington's disease R6/2 fragment model. *Exp. Neurol.* **2017**, *288*, 167–175, <https://doi.org/10.1016/j.expneurol.2016.10.017>.
77. Miranda, A.S.; Cardozo, P.L.; Silva, F.R.; de Souza, J.M.; Olmo, I.G.; Cruz, J.S.; Gomez, M.V.; Ribeiro, F.M.; Vieira, L.B. Alterations of Calcium Channels in a Mouse Model of Huntington's Disease and Neuroprotection by Blockage of CaV1 Channels. *ASN Neuro* **2019**, *11*, 1759091419856811, <https://doi.org/10.1177/1759091419856811>.
78. Latoszek, E.; Czeredys, M. Molecular Components of Store-Operated Calcium Channels in the Regulation of Neural Stem Cell Physiology, Neurogenesis, and the Pathology of Huntington's Disease. *Front. Cell Dev. Biol.* **2021**, *9*, 657337, <https://doi.org/10.3389/fcell.2021.657337>.
79. Bezprozvanny, I. Inositol 1,4,5-triphosphate receptor, calcium signalling and Huntington's disease. *Subcell Biochem.* **2007**, *45*, 323–335, https://doi.org/10.1007/978-1-4020-6191-2_11.
80. Kraskovskaya, N.A.; Bezprozvanny, I.B. Normalization of Calcium Balance in Striatal Neurons in Huntington's Disease: Sigma 1 Receptor as a Potential Target for Therapy. *Biochemistry* **2021**, *86*, 471–479, <https://doi.org/10.1134/S0006297921040076>.
81. Naia, L.; Ly, P.; Mota, S.I.; Lopes, C.; Maranga, C.; Coelho, P.; Gershoni-Emek, N.; Ankarcrona, M.; Geva, M.; Hayden, M.R.; et al. The Sigma-1 Receptor Mediates Pridopidine Rescue of Mitochondrial Function in Huntington Disease Models. *Neurotherapeutics* **2021**, *18*, 1017–1038, <https://doi.org/10.1007/s13311-021-01022-9>.
82. Ryskamp, D.; Wu, J.; Geva, M.; Kusko, R.; Grossman, I.; Hayden, M.; Bezprozvanny, I. The sigma-1 receptor mediates the beneficial effects of pridopidine in a mouse model of Huntington disease. *Neurobiol. Dis.* **2017**, *97*, 46–59, <https://doi.org/10.1016/j.nbd.2016.10.006>.
83. Kusko, R.; Dreyman, J.; Ross, J.; Cha, Y.; Escalante-Chong, R.; Garcia-Miralles, M.; Tan, L.J.; Burczynski, M.E.; Zeskind, B.; Laifenfeld, D.; et al. Large-scale transcriptomic analysis reveals that pridopidine reverses aberrant gene expression and activates neuroprotective pathways in the YAC128 HD mouse. *Mol. Neurodegener.* **2018**, *13*, 25, <https://doi.org/10.1186/s13024-018-0259-3>.
84. Jablonska, M.; Grzelakowska, K.; Wisniewski, B.; Mazur, E.; Leis, K.; Galazka, P. Pridopidine in the treatment of Huntington's disease. *Rev. Neurosci.* **2020**, *31*, 441–451, <https://doi.org/10.1515/revneuro-2019-0085>.
85. Shenkman, M.; Geva, M.; Gershoni-Emek, N.; Hayden, M.R.; Lederkremer, G.Z. Pridopidine reduces mutant huntingtin-induced endoplasmic reticulum stress by modulation of the Sigma-1 receptor. *J. Neurochem.* **2021**, *158*, 467–481, <https://doi.org/10.1111/jnc.15366>.
86. Miki, Y.; Tanji, K.; Mori, F.; Wakabayashi, K. Sigma-1 receptor is involved in degradation of intranuclear inclusions in a cellular model of Huntington's disease. *Neurobiol. Dis.* **2015**, *74*, 25–31, <https://doi.org/10.1016/j.nbd.2014.11.005>.
87. Lin, J.; Wu, P.H.; Tarr, P.T.; Lindenberger, K.S.; St-Pierre, J.; Zhang, C.Y.; Mootha, V.K.; Jager, S.; Vianna, C.R.; Reznick, R.M.; et al. Defects in adaptive energy metabolism with CNS-linked hyperactivity in PGC-1alpha null mice. *Cell* **2004**, *119*, 121–135, <https://doi.org/10.1016/j.cell.2004.09.013>.
88. Leone, T.C.; Lehman, J.J.; Finck, B.N.; Schaeffer, P.J.; Wende, A.R.; Boudina, S.; Courtois, M.; Wozniak, D.F.; Sambandam, N.; Bernal-Mizrachi, C.; et al. PGC-1alpha deficiency causes multi-system energy metabolic derangements: Muscle dysfunction, abnormal weight control and hepatic steatosis. *PLoS Biol.* **2005**, *3*, e101, <https://doi.org/10.1371/journal.pbio.0030101>.
89. Cui, L.; Jeong, H.; Borovecki, F.; Parkhurst, C.N.; Tanese, N.; Krainc, D. Transcriptional repression of PGC-1alpha by mutant huntingtin leads to mitochondrial dysfunction and neurodegeneration. *Cell* **2006**, *127*, 59–69, <https://doi.org/10.1016/j.cell.2006.09.015>.

90. Weydt, P.; Pineda, V.V.; Torrence, A.E.; Libby, R.T.; Satterfield, T.F.; Lazarowski, E.R.; Gilbert, M.L.; Morton, G.J.; Bammler, T.K.; Strand, A.D.; et al. Thermoregulatory and metabolic defects in Huntington's disease transgenic mice implicate PGC-1alpha in Huntington's disease neurodegeneration. *Cell Metab.* **2006**, *4*, 349–362, <https://doi.org/10.1016/j.cmet.2006.10.004>.
91. Johri, A.; Chandra, A.; Flint Beal, M. PGC-1alpha, mitochondrial dysfunction, and Huntington's disease. *Free Radic Biol Med.* **2013**, *62*, 37–46, <https://doi.org/10.1016/j.freeradbiomed.2013.04.016>.
92. Shin, J.H.; Ko, H.S.; Kang, H.; Lee, Y.; Lee, Y.I.; Pletinkova, O.; Troconso, J.C.; Dawson, V.L.; Dawson, T.M. PARIS (ZNF746) repression of PGC-1alpha contributes to neurodegeneration in Parkinson's disease. *Cell* **2011**, *144*, 689–702, <https://doi.org/10.1016/j.cell.2011.02.010>.
93. Zheng, L.; Bernard-Marissal, N.; Moullan, N.; D'Amico, D.; Auwerx, J.; Moore, D.J.; Knott, G.; Aebischer, P.; Schneider, B.L. Parkin functionally interacts with PGC-1alpha to preserve mitochondria and protect dopaminergic neurons. *Hum. Mol. Genet.* **2017**, *26*, 582–598, <https://doi.org/10.1093/hmg/ddw418>.
94. Vidal, R.; Caballero, B.; Couve, A.; Hetz, C. Converging pathways in the occurrence of endoplasmic reticulum (ER) stress in Huntington's disease. *Curr. Mol. Med.* **2011**, *11*, 1–12, <https://doi.org/10.2174/156652411794474419>.
95. Jiang, Y.; Chadwick, S.R.; Lajoie, P. Endoplasmic reticulum stress: The cause and solution to Huntington's disease? *Brain Res.* **2016**, *1648*, 650–657, <https://doi.org/10.1016/j.brainres.2016.03.034>.
96. Shacham, T.; Sharma, N.; Lederkremer, G.Z. Protein Misfolding and ER Stress in Huntington's Disease. *Front. Mol. Biosci.* **2019**, *6*, 20, <https://doi.org/10.3389/fmolb.2019.00020>.
97. Leitman, J.; Ulrich Hartl, F.; Lederkremer, G.Z. Soluble forms of polyQ-expanded huntingtin rather than large aggregates cause endoplasmic reticulum stress. *Nat. Commun.* **2013**, *4*, 2753, <https://doi.org/10.1038/ncomms3753>.
98. Guo, X.; Sun, X.; Hu, D.; Wang, Y.J.; Fujioka, H.; Vyas, R.; Chakrapani, S.; Joshi, A.U.; Luo, Y.; Mochly-Rosen, D.; et al. VCP recruitment to mitochondria causes mitophagy impairment and neurodegeneration in models of Huntington's disease. *Nat. Commun.* **2016**, *7*, 12646, <https://doi.org/10.1038/ncomms12646>.
99. Ghosh, D.K.; Roy, A.; Ranjan, A. The ATPase VCP/p97 functions as a disaggregase against toxic Huntingtin-exon1 aggregates. *FEBS Lett.* **2018**, *592*, 2680–2692, <https://doi.org/10.1002/1873-3468.13213>.
100. Li, X.J.; Zhang, Y.Y.; Fu, Y.H.; Zhang, H.; Li, H.X.; Li, Q.F.; Li, H.L.; Tan, R.K.; Jiang, C.X.; Jiang, W.; et al. Gossypol, a novel modulator of VCP, induces autophagic degradation of mutant huntingtin by promoting the formation of VCP/p97-LC3-mHTT complex. *Acta Pharmacol. Sin.* **2021**, *42*, 1556–1566, <https://doi.org/10.1038/s41401-020-00605-0>.
101. Casellas-Diaz, S.; Larramona-Arcas, R.; Rique-Pujol, G.; Tena-Morraja, P.; Muller-Sanchez, C.; Segarra-Mondejar, M.; Gavalda-Navarro, A.; Villarroja, F.; Reina, M.; Martinez-Estrada, O.M.; et al. Mfn2 localization in the ER is necessary for its bioenergetic function and neuritic development. *EMBO Rep.* **2021**, *22*, e51954, <https://doi.org/10.15252/embr.202051954>.
102. Shi, M.; Chen, F.; Chen, Z.; Yang, W.; Yue, S.; Zhang, J.; Chen, X. Sigma-1 Receptor: A Potential Therapeutic Target for Traumatic Brain Injury. *Front. Cell Neurosci.* **2021**, *15*, 685201, <https://doi.org/10.3389/fncel.2021.685201>.
103. Ciron, C.; Zheng, L.; Bobela, W.; Knott, G.W.; Leone, T.C.; Kelly, D.P.; Schneider, B.L. PGC-1alpha activity in nigral dopamine neurons determines vulnerability to alpha-synuclein. *Acta Neuropathol. Commun.* **2015**, *3*, 16, <https://doi.org/10.1186/s40478-015-0200-8>.
104. Lelliott, C.J.; Medina-Gomez, G.; Petrovic, N.; Kis, A.; Feldmann, H.M.; Bjursell, M.; Parker, N.; Curtis, K.; Campbell, M.; Hu, P.; et al. Ablation of PGC-1beta results in defective mitochondrial activity, thermogenesis, hepatic function, and cardiac performance. *PLoS Biol.* **2006**, *4*, e369, <https://doi.org/10.1371/journal.pbio.0040369>.
105. Jamwal, S.; Blackburn, J.K.; Elsworth, J.D. PPARgamma/PGC1alpha signaling as a potential therapeutic target for mitochondrial biogenesis in neurodegenerative disorders. *Pharmacol. Ther.* **2021**, *219*, 107705, <https://doi.org/10.1016/j.pharmthera.2020.107705>.
106. de Oliveira Bristot, V.J.; de Bem Alves, A.C.; Cardoso, L.R.; da Luz Scheffer, D.; Aguiar, A.S., Jr. The Role of PGC-1alpha/UCP2 Signaling in the Beneficial Effects of Physical Exercise on the Brain. *Front. Neurosci.* **2019**, *13*, 292, <https://doi.org/10.3389/fnins.2019.00292>.
107. Miller, K.N.; Clark, J.P.; Martin, S.A.; Howell, P.R.; Burhans, M.S.; Haws, S.A.; Johnson, N.B.; Rhoads, T.W.; Pavelec, D.M.; Eliceiri, K.W.; et al. PGC-1a integrates a metabolism and growth network linked to caloric restriction. *Aging Cell* **2019**, *18*, e12999, <https://doi.org/10.1111/accel.12999>.
108. Jacomin, A.C.; Taillebourg, E.; Fauvarque, M.O. Deubiquitinating Enzymes Related to Autophagy: New Therapeutic Opportunities? *Cells* **2018**, *7*, 112, <https://doi.org/10.3390/cells7080112>.