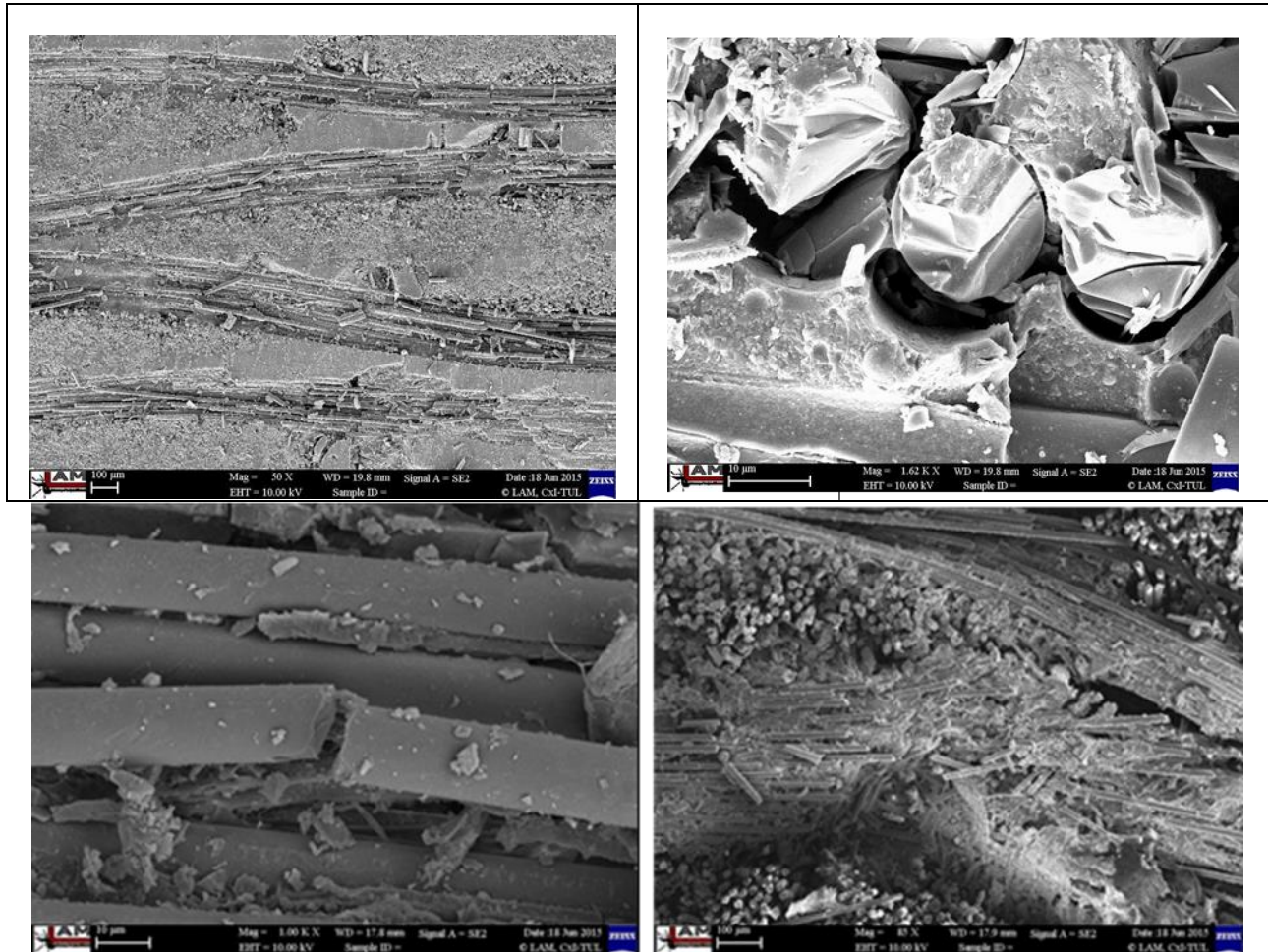
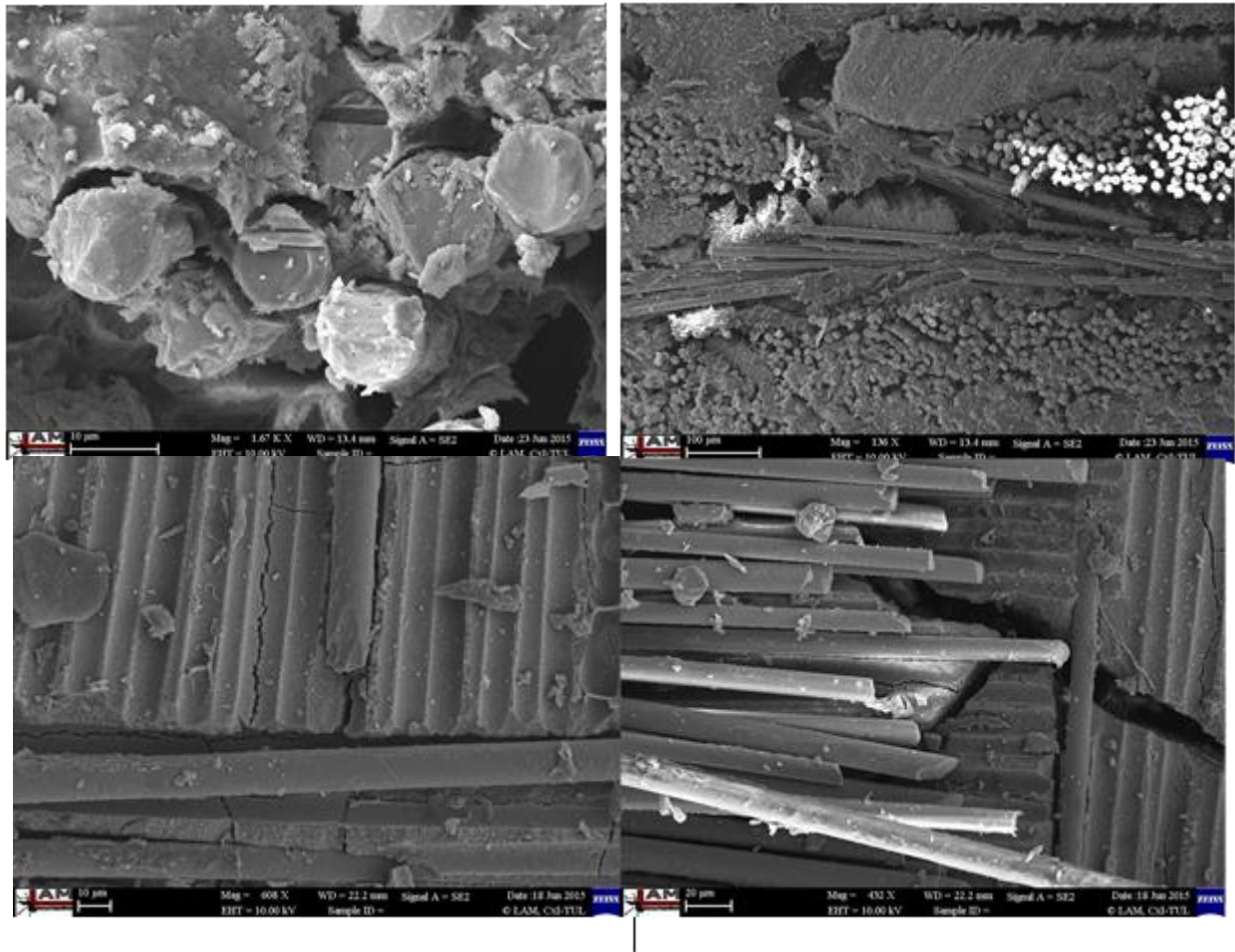


# Investigation of the Internal Structure of Fiber Reinforced Geopolymer Composite under Mechanical Impact: A Micro Computed Tomography ( $\mu$ CT) Study

Sneha Samal <sup>1</sup>, Marcela Kolinova <sup>2</sup>, Hubert Rahier <sup>3</sup>, Giovanni Dal Poggetto <sup>4</sup> and Ignazio Blanco <sup>5,\*</sup>



**Figure SM1.** SEM images of E-glass geocomposite after damage, showing matrix rupture, fibre pull out and non-adhesion.



**Figure SM2.** SEM images of Basalt reinforced geocomposite after impact test, showing the fiber breakage, matrix cracks, non-adhesion of fabric-matrix interface.