

Supplementary Information

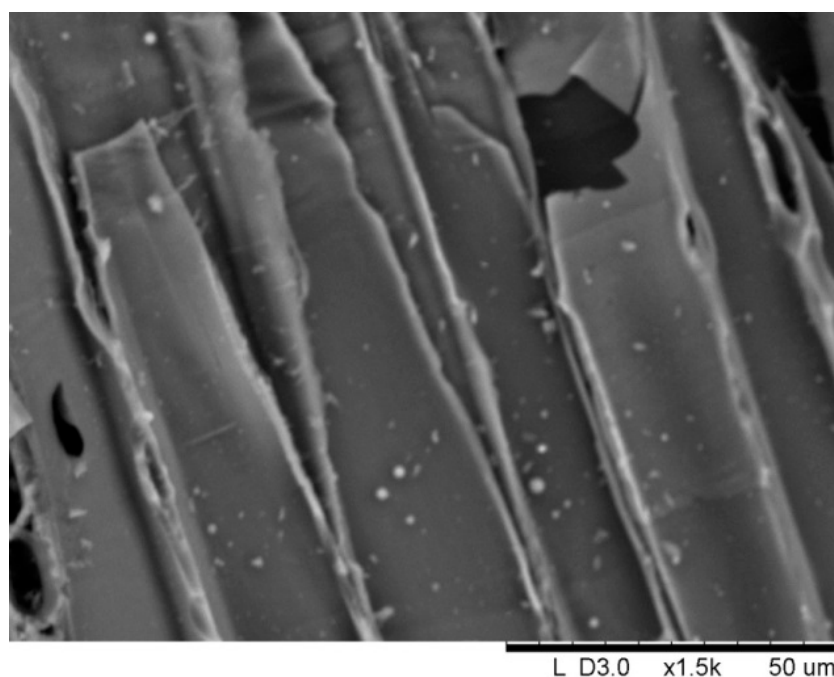


Figure S1. Scanning electron microscope image of the surface of the pine/spruce biochar used as filter material in the two stage VFF-HFF filter system. Magnification factor $\times 1500$.

Table S1. Regression summary for Tot-N removal as dependent variable 190326.sta. $R = 0.325$, $R^2 = 0.106$, adjusted $R^2 = 0.095$, $F(1,83) = 9.81$, $p < 0.002$, std. error of estimate = 13.17.

N = 85						
	b *	Std. Err.	b	Std. Err.	t(83)	p-Value
Intercept			55.57	4.23	13.12	0.00
OLR ($\text{g m}^{-2} \cdot \text{day}^{-1}$)	0.32	0.10	0.91	0.29	3.13	0.002