

Table S1. Characteristics of unmodified and modified carbon felts.

Anode	BET SSA (m ² /g)	Hydrophobicity (°)	Loading mass (g)
Carbon felt	6.2	110	-
LTA zeolite-modified carbon felt	13.32	0	0.10
Bentonite-modified carbon felt	16.74	0	0.14

SSA: Specific Surface Area

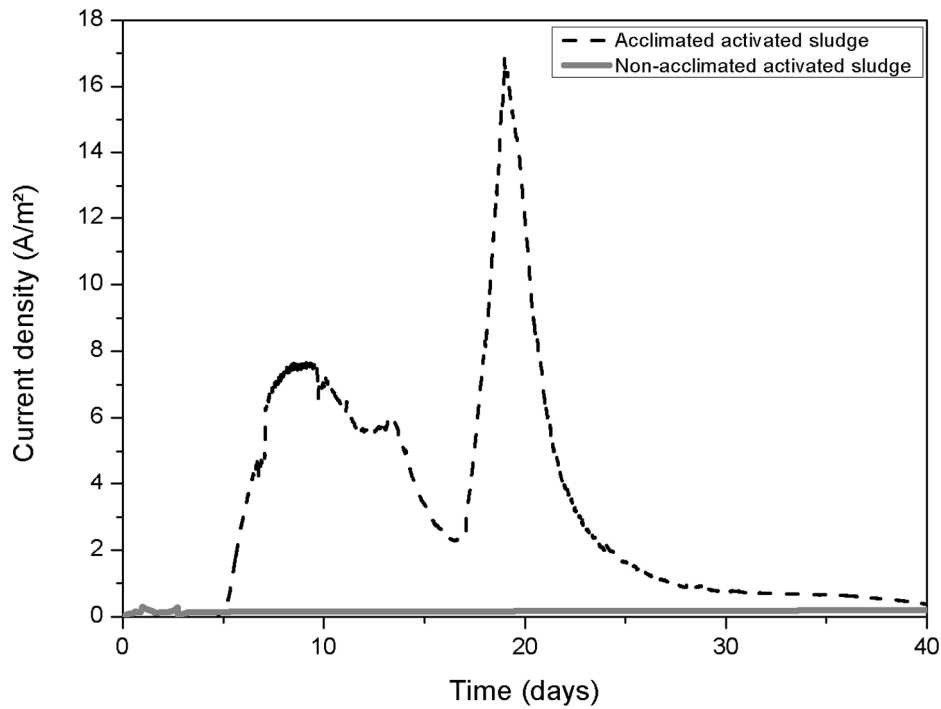


Figure S1. Variation of the current density on carbon felt electrodes polarized at -0.2 V vs. SCE in tannery wastewater and 20 mM of acetate inoculated with acclimated activated sludge (dotted line) or non-acclimated activated sludge (solid gray line).