

Calculation of the Center of Mass Position of Each Link of Multibody Biped Robots

Giovanni Gerardo Muscolo *, Darwin Caldwell and Ferdinando Cannella

Department of Advanced Robotics, Italian Institute of Technology, via Morego, 30, Genova 16163, Italy; darwin.caldwell@iit.it (D.C.); Ferdinando.cannella@iit.it (F.C.)

* Correspondence: giovanni.muscolo@iit.it; Tel.: +39-010-7178-1347

Academic Editors: Toshio Fukuda, Fei Chen and Qing Shi

Received: 26 May 2017; Accepted: 10 July 2017; Published: 14 July 2017

Abstract: In this paper, a novel method to determine the center of mass position of each link of human-like multibody biped robots is proposed. A first formulation to determine the total center of mass position has been tested in other works on a biped platform with human-like dimensions. In this paper, the formulation is optimized and extended, and it is able to give as output the center of mass positions of each link of the platform. The calculation can be applied to different types of robots. The optimized formulation is validated using a simulated biped robot in MATLAB.

Keywords: biped robots; center of mass; balance; biped locomotion; multibody biped robots

1. Introduction

One of the pioneers in the field of biped robots was the Waseda University of Tokyo. In 1973, research groups from Waseda University developed WABOT-I, and in 1984 WABOT-2 as to become a professional musician [1]. In 1999, they developed a humanoid with a complete human configuration capable of biped locomotion, WABIAN (Waseda Bipedal humANoid), and in 2011 its Italian version SABIAN [2–4]. In 2017, a more complex version of the WABIAN robot is presented in [5]. In 2013, Google acquired eight advanced robot companies. Boston Dynamics, one of these, is known for its advanced robots including the world's fastest robot, Cheetah [6] (which can travel at 29 mph), Big Dog [7] (the all-rough and tough robot that walks, runs, climbs, and carries heavy loads), and the latest Atlas (a biped humanoid capable of walking in outdoor rough terrain with the upper limbs capable of performing other tasks while walking). Several versions of Atlas [8,9] have been prepared for the DARPA Robotics Challenge program. In 2017, Boston Dynamics presented a very innovative robot with higher locomotion capabilities including wheels in the feet [10].

The general robot design process includes many phases, like the design of every complex machine. A tentative method to define these phases is shown as follows:

- PHASE 1—Determination of the technical specifications which define limits and characteristics that the robot should have.
- PHASE 2—Conceptual design of the robot including analysis of the developed robots in the world; design of novel systems; definition of the whole system including mechanics, electronics, low and high level control.
- PHASE 3—Functional design of the robot including interaction of the robot with the environment; theoretical formulation and optimization; software and hardware design of virtual models (virtual model prototyping using CAD tools, analytical simulations, finite elements analysis, multibody analysis).
- PHASE 4—Development of the robot including rapid prototyping modeling and tests.
- PHASE 5—Realization of the final robot prototype and final tests.

All robots realized in Phase 5 should have, theoretically, the same architecture of the virtual models designed in Phase 3. In particular, the positions of the CoM (Center of Mass) of each link of the robot should have the same position defined in the virtual model. However, the total CoM of the real platform is not in the same calculated position of the total CoM of its respective virtual model. Why are these discrepancies created? Are these errors (between virtual models and real robots) influences on the robot functionality?

In order to answer to these two questions we could show how the problem was evident in the SABIAN robot (height: 1500 mm; 64 kg). During our tests on the platform, we noted a weight difference of about 5 kg including differences of CoM position between real and virtual SABIAN. These discrepancies are created because during manufacturing, construction, and maintenance of the robot, the tolerances of the joints, cables, drivers, batteries, links, etc. could not be completely respected and errors are created. These errors influence the robot functionality and cannot be eliminated [11]. Hence, the real center of mass (CoM) of the robot is not coincident with the CoM of its virtual model [12]. In our experiments, the robot SABIAN [2,3] had about 5 kg of errors in an unknown position and during locomotion, the controller implemented on the virtual model architecture was not able to control the real platform with this unknown error position. Dynamic balance in locomotion is not simple to control in a biped platform and these errors may disturb biped stability.

Some researchers and specialists in the humanoid robotics field use a posture controller [11,12], in order to reduce the error between the robotic platform and its virtual model. Kwon et al. [13] (2007) proposed a method that uses a closed-loop observer based on a Kalman filter, adopted as estimation framework. Ayusawa et al. (2008) [14] proposed a method based on regression analysis models in order to estimate inertial parameters using a minimal set of sensors. In the work of Sujan and Dubowsky (2003) [15] the dynamic parameters of a mobile robot are calculated using an algorithm based on a mutual-information-based theoretic metric for the excitation of vehicle dynamics. Liu et al. (1998) [16], Khalil et al. (2007) [17], and Swevers et al. (1997) [18] show other methods oriented to improve the balancing performances of mobile biped robots when the center of mass is not precisely known.

In [2,3], the authors proposed a novel approach to determine the correct position of the center of mass in humanoid robots. In order to compensate the errors between the biped platform and its virtual model, an additional mass has been implemented in the virtual model of the humanoid robot. The value of this mass error is the analytical difference between the weight of the robot and the weight of its virtual model. Its position in the space is not known a priori, but it will be approximately calculated with the procedure described in [3]. In order to define its position, the authors of the paper proposed an analytic formula that gives the real position of the CoM of the platform and is based on the application of a procedure that requires only the values of the force-torque sensors, applied on the feet of the humanoid robot, and the values of the motors torque. This procedure standardizes the calibration procedure in order to minimize the errors and it can be applied to every biped platform. The formulation approach has been implemented on the SABIAN robot with dimensions comparable to humans (height: 1500 mm; weight: 64 kg) giving very good results.

The limits underlined in the papers [2,3] were based on the approximation used to put the error mass in the determined CoM with the proposed formula. The approximation has been justified because the real position of the error mass is not known and if an external mass is positioned in the real CoM, its negative influence is reduced. However, the problem remains because an approximation has been used on behalf of exact calculation.

In this paper, the limits underlined in [2,3] are bypassed with the optimization of the formula based on the determination of the CoM position of each link of the robot. With the proposed solution, the error mass is distributed on each link of the biped robot.

Another advantage of the formulation presented in this paper is that if the total CoM position of the platform is known a priori, the first formulation proposed in [2,3] can be bypassed and the CoM positions of each link of the platform can be calculated analytically without using force-torque sensors and the motor's torque.

The paper is structured as follows: Section 2 presents, in synthesis, the first validated theoretical formulation proposed in [2,3]; Section 3 shows results and discussion on the second theoretical formulation to determine the center of mass position of each link of the platform. Section 4 presents validation of the second theoretical formulation. The paper ends with a conclusion and future works.

2. First Validated Theoretical Formulation

2.1. Dynamics of Multibody Biped Robots

Figure 1 shows global and local reference Cartesian system (respectively $G\text{-}XYZ$ and $P\text{-}X_pY_pZ_p$) and three points in the space (0, 1 and 2). The three points can be considered as belonging to a rigid body in the space; furthermore, the rigid body can be compared to a humanoid platform, or multibody robot, with its center of gravity in the Point 2 and its feet in the Points 0 and 1. A humanoid robot is indeed composed of a trunk and articulated kinematic chains such as legs and arms, connected to the trunk with joints and motors, and with force-torque sensors positioned on the feet and on the hands. The Points 0 and 1 represent the feet, where the force-torque sensors are positioned, and are shown with a light blue colour; the center of mass represented with the Point 2 is shown in red; the other black points indicate the center of mass of the links of the robot.

The dynamics of the system is described by the two equations (see Figure 1):

$$m_2 \cdot \vec{a}_2 = m_2 \cdot \vec{g} + \vec{F}_0 + \vec{F}_1 + \vec{F}_2 \quad (1)$$

$$\vec{M}_p = \vec{M}_0 + \vec{M}_2 + \vec{M}_1 + \vec{p}_0 \times \vec{F}_0 + \vec{p}_1 \times \vec{F}_1 + \vec{p}_2 \times \vec{F}_2 \quad (2)$$

where: $\vec{a}_2 = [a_{x2}, a_{y2}, a_{z2}]^T$ is the acceleration of the CoM; m_2 is the total mass of the robot without feet; $\vec{p}_0 = [-n, -l, e]^T$ and $\vec{p}_1 = [o, q, f]^T$ are the position vectors shown in Figure 1. $\vec{p}_2 = [X_2, Y_2, Z_2]^T$ is the CoM position that will be determined with the proposed formula in Section 3. $\vec{M}_0 = [M_{x0}, M_{y0}, M_{z0}]^T$, $\vec{M}_1 = [M_{x1}, M_{y1}, M_{z1}]^T$, $\vec{M}_2 = [M_{x2}, M_{y2}, M_{z2}]^T$, $\vec{F}_0 = [F_{x0}, F_{y0}, F_{z0}]^T$, $\vec{F}_1 = [F_{x1}, F_{y1}, F_{z1}]^T$, $\vec{F}_2 = [F_{x2}, F_{y2}, F_{z2}]^T$ respectively represent the torques ($\vec{M}_0, \vec{M}_1, \vec{M}_2$) and the forces ($\vec{F}_0, \vec{F}_1, \vec{F}_2$) acting at the Points 0, 1 and 2. $\vec{M}_p = [M_{xp}, M_{yp}, M_{zp}]^T$ is the resultant moment calculated with respect to the local Cartesian system (see Figure 1). The direction of the force and torque vectors, shown in Figure 1, is only indicative; the positive direction of the force and torque vectors has been considered with the same positive direction of the global reference Cartesian system ($G\text{-}XYZ$).

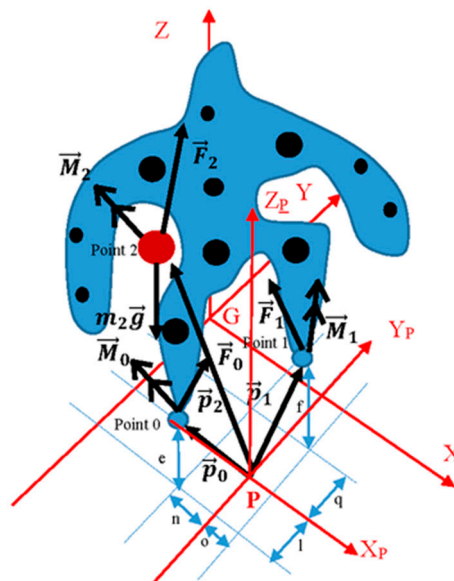


Figure 1. Scheme for determining the total CoM (Center of Mass) position. The direction of the force and torque vectors is only indicative. Points 0 and 1 represent the feet, where the force/torque sensors are positioned; the center of mass is represented with the Point 2; the other black points indicate the mass of the links of the robot.

Furthermore, we can say that:

$$\vec{M}_2 = \begin{bmatrix} M_{x2} \\ M_{y2} \\ M_{z2} \end{bmatrix} = \begin{bmatrix} \sum M_{j_roll} \\ \sum M_{j_pitch} \\ \sum M_{j_yaw} \end{bmatrix} \quad (3)$$

M_2 includes only the internal torques; M_0 and M_1 include the ground reaction torques. The Equation (3) is based on the assumption that the Jacobian Matrix is equal to the identity Matrix. This assumption is correct if the joints axis of the robot remain parallel, during motion, to the Y axis of the global reference Cartesian system (G-XYZ). It means that the motion of the robot for the determination of the formula is performed in a 2D plane. In this paper, the XZ plane is considered. $\sum M_{j_roll}$, $\sum M_{j_pitch}$, $\sum M_{j_yaw}$ are the torques of all roll, pitch, and yaw motors of the robot [11] and M_j is obtained from the equation:

$$M_j[Nm] = K[Nm/A] \cdot I[A] \quad (4)$$

The accuracy in the estimation of M_j , calculated in (4) depends on the accuracy of the K value that is a constant parameter set for each motor and on the accuracy of the current I necessary for the motor function. In particular, the resolution of the used A/D converters is a fundamental parameter to define the accuracy of the current I .

2.2. Equilibrium

Considering the robot equilibrium ($m_2 \vec{a}_2 = 0$; $\vec{M}_p = 0$) with respect to the Point P as shown in the Figure 1, Equations (1) and (2) can be modified. Moving the point of view from the vector shape to the scalar one, the values of the three components x , y , and z of the force and the torque can be obtained. The new system consists of six equations (five linearly independent) in six unknown values F_{x2} , F_{y2} , F_{z2} , X_2 , Y_2 , Z_2 . The forces and torques in Points 0 and 1 can be calculated by means of the load cells. The torques M_{x2} , M_{y2} , M_{z2} are determined using (3) and (4).

In order to simplify the system, the robot is positioned in two different configurations. The two configurations are chosen in order to have a simplified geometry using $l = q$, $n = o = e = f = 0$ (see Figure 1) obtaining $\vec{p}_0 = [0, -l, 0]^T$ and $\vec{p}_1 = [0, l, 0]^T$.

In the first step the robot is placed on a walking surface and the platform should be kept in a first balance configuration (Scheme A, see Figure 2), allowing a measurement of the forces (\vec{F}_0, \vec{F}_1) and the torques (\vec{M}_0, \vec{M}_1) by means of the force-torque sensors on the feet, and of the armature currents ($\sum M_{j_roll}$, $\sum M_{j_pitch}$, $\sum M_{j_yaw}$). In a second step, the robot is placed in a second balance configuration (Scheme B, see Figure 2), and in the same way, forces, torques, and motor currents associated with this new balance configuration are measured. The two balance configurations can be performed as the reader prefers underlining that the robot should be in a balance position. In particular, the coordinates X_{2A} and Z_{2A} are relative to the position of the center of mass of the platform in the configuration A along the first straight common line, which is chosen (in this paper) orthogonal to the plane of standing, and then parallel to the Z axis. m_u , r_u , l_u , are the mass and the position of the center of mass of the robot ankle link from the floor to the ankle joint; U is the length of the ankle. m_w , r_w , l_w , are the mass and the position of the center of mass of the remaining links of the platform. In the second balance configuration B, the components of the body are aligned according to a second straight common line, inclined to the vertical line with an angle θ_t . While m_u , m_w , r_u , l_u remain constant, r_w and l_w change their values. In this case, X_{2B} and Z_{2B} identify the coordinates of the center of mass of the body in the second balance configuration B. The coordinates of the two feet are the same because we chose this configuration as input. The implementations have been done positioning the robot in this initial position using a leveller and the encoders of the motors.

Based on the choice $l = q$, $n = o = e = f = 0$ ($\vec{p}_0 = [0, -l, 0]^T$ and $\vec{p}_1 = [0, l, 0]^T$), the Equations (1) and (2) can be rewritten in a general form that is function of the balance i configuration ($I = A$ or $I = B$). Thus, Equations from (5) to (9) are obtained.

$$F_{X2i} = -F_{X0i} - F_{X1i} \quad (5)$$

$$F_{Y2i} = -F_{Y0i} - F_{Y1i} \quad (6)$$

$$F_{Z2i} = m_2 \cdot g - F_{Z0i} - F_{Z1i} \quad (7)$$

$$X_{2i} = -(M_{Y0i} + M_{Y1i} + M_{Y2i})/(F_{Z0i} + F_{Z1i}) + [(F_{X0i} + F_{X1i})/(F_{Z0i} + F_{Z1i})] \cdot Z_{2i} \quad (8)$$

$$Y_{2i} = [(M_{X0i} + M_{X1i} + M_{X2i})/(F_{Z0i} + F_{Z1i})] + [l \cdot (F_{Z1i} - F_{Z0i})/(F_{Z0i} + F_{Z1i})] + [(F_{Y0i} + F_{Y1i})/(F_{Z0i} + F_{Z1i})] \cdot Z_{2i} \quad (9)$$

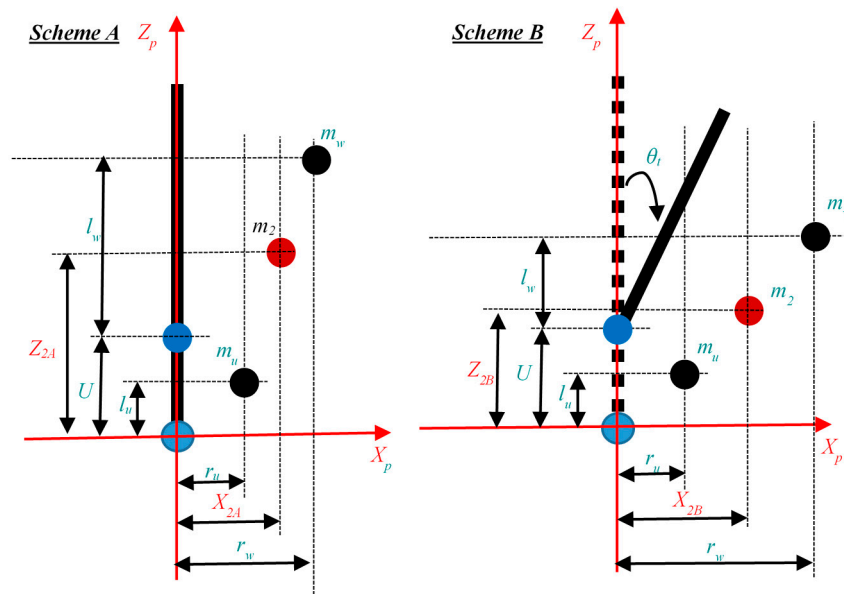


Figure 2. Two examples of balance configurations; scheme A and scheme B. m_2 is the total CoM. m_u and m_w are the CoMs of the two links.

2.3. Proposed Coefficients

In following, four novel coefficients $(\alpha_i, \beta_i, \gamma_i, \delta_i)$ are introduced

$$-(M_{Y0i} + M_{Y1i} + M_{Y2i})/(F_{Z0i} + F_{Z1i}) = \alpha_i \quad (10)$$

$$(F_{X0i} + F_{X1i})/(F_{Z0i} + F_{Z1i}) = \beta_i \quad (11)$$

$$(M_{X0i} + M_{X1i} + M_{X2i})/(F_{Z0i} + F_{Z1i}) + [l \cdot (F_{Z1i} - F_{Z0i})/(F_{Z0i} + F_{Z1i})] = \gamma_i \quad (12)$$

$$(F_{Y0i} + F_{Y1i})/(F_{Z0i} + F_{Z1i}) = \delta_i \quad (13)$$

Rewriting Equations (8) and (9) (for $I = A$ or $I = B$)

$$X_{2i} = \alpha_i + \beta_i \cdot Z_{2i} \quad (14)$$

$$Y_{2i} = \gamma_i + \delta_i \cdot Z_{2i} \quad (15)$$

Using the parameters m_u, m_w, r_u, l_u, r_w and l_w , the Equations (16) and (17) can be obtained. Thus, the Equations (14), (16) and (17) can be seen as a system composed of six equations in six unknown variables (for $i = A$ and $i = B$) $X_{2A}, Z_{2A}, X_{2B}, Z_{2B}, r_w, l_w$; the relation between m_w and m_u is given by the Equation (18). θ_i is fixed by the user ($\theta_i = 0$ in $i = A$), in a way that does not allow to tilt the platform.

$$X_{2i} = [m_u \cdot r_u + m_w \cdot (l_w \cdot \sin \theta_t + r_w \cdot \cos \theta_t)]/m_2 \quad (16)$$

$$Z_{2i} = [m_u \cdot l_u + m_w \cdot (U + l_w \cdot \cos \theta_t - r_w \cdot \sin \theta_t)] / m_2 \quad (17)$$

$$m_w = m_2 - m_u \quad (18)$$

Solving the equations system constituted by (14), (16) and (17), the positions of the center of mass are calculated in both the configurations A and B (for $i = A$ and $i = B$). It must be underlined that only X as a function of Z has been considered, but the same result can be obtained considering Y as a function of Z .

2.4. Determination of the Partial Center of Mass Position

Placing $\theta_t = 0$ (then $i = A$) and substituting (16) and (17) into (14) and placing $\theta_t \neq 0$ (then $i = B$) and substituting (16) and (17) into (14), two different equations will be obtained. Finally, combining these two equations l_w and r_w are obtained.

Placing $\theta_t \neq 0$ (then $i = B$) and rewriting (17) with the latter values given by l_w and r_w , Z_{2B} is obtained.

Z_{2B} represents the general position of the height Z of the center of mass for any value of θ_t . Placing $i = B$ in (14) and (15) and substituting the found value of Z_{2B} , the general formula of the position of the center of mass in (19) is given. Considering the equilibrium configuration, A ($i = A$) and then θ_t equal to zero, the system (20) is obtained.

In particular, the calculation of the center of mass position is strictly related to the proposed coefficients $\alpha_A, \beta_A, \gamma_A, \delta_A, \alpha_B, \beta_B, \gamma_B, \delta_B$, that are numerical values associated with the first and second measurements on the robot. In order to calculate these coefficients, it is necessary to consider the arbitrary θ_t associated with the second balance configuration, in addition to other parameters such as the above mentioned position of the center of mass of the feet (r_u and l_u) and its mass (m_u) calculated using the CAD model. These parameters have a lower weight with respect to other links of the platform and then a lower inertial influence [3]. The two formulations (19) and (20) were tested and validated on the SABIAN platform giving very good results and presented in [2,3].

$$\begin{cases} Z_{2B} = f(\theta_t, m_2, \beta_B, \beta_A, \alpha_A, m_u, l_u, U, r_u, \alpha_B); \\ X_{2B} = \alpha_B + \beta_B \cdot Z_{2B}; \\ Y_{2B} = \gamma_B + \delta_B \cdot Z_{2B}; \end{cases} \quad (19)$$

$$\begin{cases} Z_{2B}(\theta_t = 0) = Z_{2A} \\ = f(m_2, \beta_B, \beta_A, \alpha_A, m_u, l_u, U, r_u, \alpha_B); \\ X_{2B}(\theta_t = 0) = X_{2A} = \alpha_A + \beta_A \cdot Z_{2A}; \\ Y_{2B}(\theta_t = 0) = Y_{2A} = \gamma_A + \delta_A \cdot Z_{2A}; \end{cases} \quad (20)$$

3. Second Theoretical Formulation

3.1. Procedure for n Degrees of Freedom

In order to find the CoM positions of each link of the platform, the following procedure and formulation must be used. In particular, if n are the degrees of freedom of the platform; i represents the used configurations to calculate the CoM of each link. j represents the initial configuration. The number (k) of the configurations necessary to calculate the CoM position for each link of the system is calculated in the following

$$k = n + 1 \quad (21)$$

The total CoM position (X_{2i} , Y_{2i} , Z_{2i}) of the complete system for each configuration i can be obtained with the following formulas where the coefficients $\alpha_i, \beta_i, \gamma_i, \delta_i, \alpha_j, \beta_j, \gamma_j, \delta_j$, are calculated using respectively (10)–(13).

$$\begin{cases} Z_{2i} = f(\theta_i, m_2, \beta_i, \beta_j, \alpha_j, m_u, l_u, U, r_u, \alpha_i); \\ X_{2i} = \alpha_i + \beta_i \cdot Z_{2i}; \\ Y_{2i} = \gamma_i + \delta_i \cdot Z_{2i}; \end{cases} \quad (22)$$

The following formulas from (23) to (26) allow to determine the CoM positions of each link of the robot. $m_w, m_2, m_u, r_u, q_u, l_u, U$, are the input of the system as shown in the Section 2. r_{wi}, q_{wi}, l_{wi} , are the components of the vector position $\vec{t}_i = [r_{wi} \ q_{wi} \ l_{wi} + U]^T$ respectively in X_P, Y_P , and Z_P directions (see Figure 1). χ_i and ε_i are the angles of the vector position $\vec{t}_i = [r_{wi} \ q_{wi} \ l_{wi} + U]^T$ as shown in Figure 3.

$$r_{wi} = \frac{X_{2i} \cdot m_2 - m_u \cdot r_u}{m_w}; \quad q_{wi} = \frac{Y_{2i} \cdot m_2 - m_u \cdot q_u}{m_w};$$

$$l_{wi} = \frac{Z_{2i} \cdot m_2 - m_u \cdot l_u}{m_w} - U \quad (23)$$

$$r_{wi} = \frac{X_{2i} \cdot m_2 - m_u \cdot r_u}{m_w}; \quad q_{wi} = \frac{Y_{2i} \cdot m_2 - m_u \cdot q_u}{m_w};$$

$$l_{wi} = \frac{Z_{2i} \cdot m_2 - m_u \cdot l_u}{m_w} - U \quad (24)$$

$$\vec{t}_i = \begin{bmatrix} r_{wi} \\ q_{wi} \\ l_{wi} + U \end{bmatrix} = \begin{bmatrix} t_i \sin \chi_i \sin \varepsilon_i \\ t_i \sin \chi_i \cos \varepsilon_i \\ t_i \cos \chi_i \end{bmatrix} \quad (25)$$

$$\vec{t}_i \cdot m_w = \sum_{v=1}^n \vec{s}_{iv} \cdot m_{iv} \quad (26)$$

$$\vec{s}_i = \begin{bmatrix} r_i \\ q_i \\ l_i \end{bmatrix} \quad (27)$$

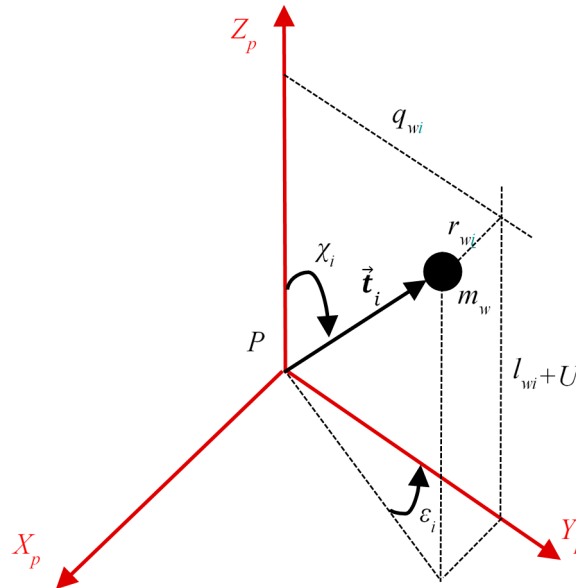


Figure 3. Scheme and vector position of the mass m_w .

3.2. Procedure for $n = 2$ Degrees of Freedom

Figure 4 shows a sketch of a robot in a plane X_P, Z_P with two degrees of freedom ($n = 2$) and three links (L_a, L_b, L_c). From (21) $k = 3$ is obtained. This result means that two configurations must be used to calculate the coefficients $\alpha_i, \beta_i, \gamma_i, \delta_i$, and one configuration must be used to calculate the coefficients $\alpha_j, \beta_j, \gamma_j, \delta_j$ using respectively (10)–(13) in order to find the CoM position of the links of the robot. In particular, the following iterative procedure should be used:

- The robot is placed on a walking surface and the platform should be kept in a first balance configuration j allowing a measurement of the forces (\vec{F}_0, \vec{F}_1) and the torques (\vec{M}_0, \vec{M}_1) by means

of the force-torque sensors on the feet, and of the armature currents ($\sum M_{j_roll}$, $\sum M_{j_pitch}$, $\sum M_{j_yaw}$). These values are used to calculate the coefficients $\alpha_j, \beta_j, \gamma_j, \delta_j$, of the (22) using respectively (10)–(13);

- The robot is placed in a second and third balance configuration i , and in the same way, forces, torques, and motor currents associated with each balance configuration (second and third) are measured. These values are used to calculate the coefficients $\alpha_i, \beta_i, \gamma_i, \delta_i$ using respectively (10)–(13).
- For each balance configuration i , the total CoM position is calculated using (22);
- Each total CoM position allows to determine r_{wi}, q_{wi}, l_{wi} , using (23) and the CoM position of each link of the robot using (27). For each configuration i , an equation using (26) is created. n linearly independent equations are used to find n vector positions.

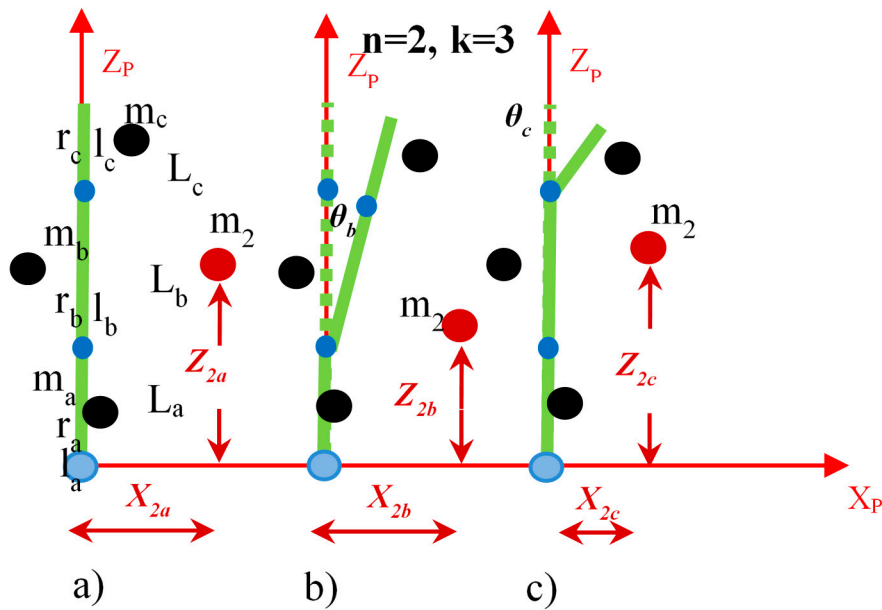


Figure 4. Sketch of a robot in a plane with 2 degrees of freedom. Three Configurations (a)–(c). m_2 is the total mass of the system; m_a, \dots, m_c are the masses of the links and r_a, \dots, r_c and l_a, \dots, l_c are respectively the x and z components of the center of mass of the links respect to the relative revolute joint; L_a, \dots, L_c are the lengths of the links.

3.3. Implementation of the Analytical Formulation

The example shown in Figure 4 has four unknown parameters (r_b, l_b, r_c, l_c), but four linearly independent equations can be obtained by the formulas shown in Section 3.1. In this case, we suppose to have m_a, m_b, m_c, r_a, l_a , as input. Figure 5 shows in details the configurations b and c shown in Figure 4. In particular, the four unknown parameters (r_b, l_b, r_c, l_c) which should be determined using analytical formulation are found using polar coordinates. \vec{t}_b and \vec{t}_c are the position vectors of the mass m_w respect to the local reference system $P-X_P Y_P Z_P$ and respectively of the configuration b and c . \vec{s}_b and \vec{s}_c are respectively the position vectors of the masses, m_b and m_c , respect to the local reference system of each link.

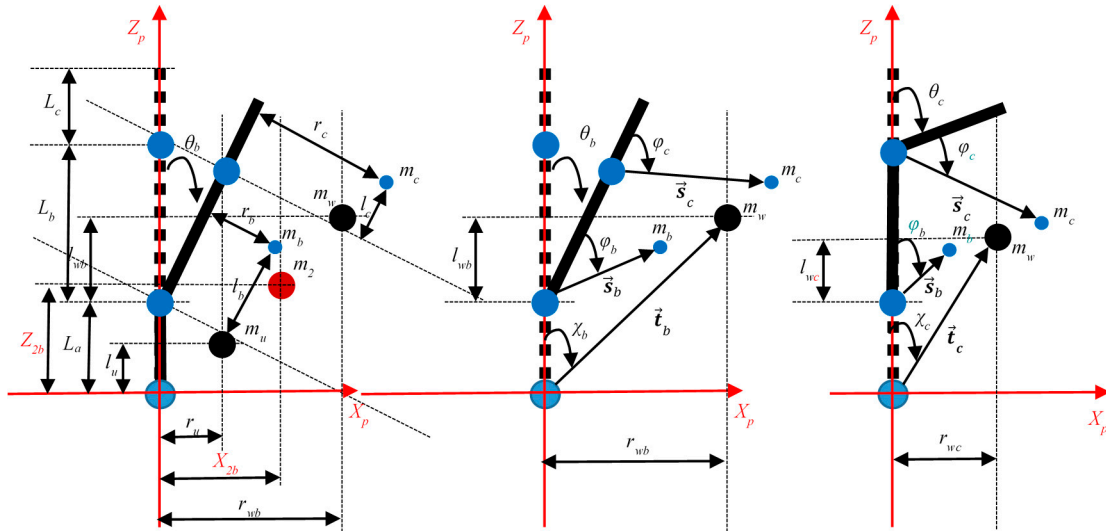


Figure 5. Example for implementing the formula.

Using (22), Z_{2b} , X_{2b} , and Z_{2c} , X_{2c} , can be calculated as shown in following

$$\begin{cases} Z_{2b} = f(\theta_b, m_2, \beta_b, \beta_a, \alpha_a, m_a, l_a, L_a, r_a, \alpha_b) \\ X_{2b} = \alpha_b + \beta_b \cdot Z_{2b} \end{cases} \quad (28)$$

$$\begin{cases} Z_{2c} = f(\theta_c, m_2, \beta_c, \beta_a, \alpha_a, m_a, l_a, L_a, r_a, \alpha_c) \\ X_{2c} = \alpha_c + \beta_c \cdot Z_{2c} \end{cases} \quad (29)$$

Using (23)–(25), r_{wb} , l_{wb} , and r_{wc} , l_{wc} , can be determined (see Figure 5) and the modules and angles of the two position vectors (\vec{t}_b and \vec{t}_c) are found

$$r_{wb} = \frac{X_{2b} \cdot m_2 - m_u \cdot r_u}{m_w}; \quad l_{wb} = \frac{Z_{2b} \cdot m_2 - m_u \cdot l_u}{m_w} - L_a \quad (30)$$

$$r_{wc} = \frac{X_{2c} \cdot m_2 - m_u \cdot r_u}{m_w}; \quad l_{wc} = \frac{Z_{2c} \cdot m_2 - m_u \cdot l_u}{m_w} - L_a \quad (31)$$

$$t_b = \sqrt{r_{wb}^2 + (l_{wb} + L_a)^2}; \quad \chi_b = \tan^{-1} \left(\frac{r_{wb}}{(l_{wb} + L_a)} \right) \quad (32)$$

$$t_c = \sqrt{r_{wc}^2 + (l_{wc} + L_a)^2}; \quad \chi_c = \tan^{-1} \left(\frac{r_{wc}}{(l_{wc} + L_a)} \right) \quad (33)$$

Using (26) and (27), the modules of the position vectors \vec{s}_b and \vec{s}_c (respectively the position vectors of the masses m_b and m_c respect to the local reference system of each link) are determined. In the following, detailed equations are shown which can determine the four unknown parameters (r_b , l_b , r_c , l_c).

$$m_w \cdot r_{wb} = m_b \cdot (l_b \cdot \sin \theta_b + r_b \cdot \cos \theta_b) + m_c \cdot ((L_b + l_c) \cdot \sin \theta_b + r_c \cdot \cos \theta_b) \quad (34)$$

$$m_w \cdot (l_{wb} + L_a) = m_b \cdot (L_a + l_b \cdot \cos \theta_b - r_b \cdot \sin \theta_b) + m_c \cdot ((L_b + l_c) \cdot \cos \theta_b - r_c \cdot \sin \theta_b + L_a) \quad (35)$$

$$m_w \cdot r_{wc} = m_b \cdot r_b + m_c \cdot (l_c \cdot \sin \theta_c - r_c \cdot \cos \theta_c) \quad (36)$$

$$m_w \cdot (l_{wc} + L_a) = m_b \cdot (L_a + l_b) + m_c \cdot (L_a + L_b + l_c \cdot \cos \theta_c - r_c \cdot \sin \theta_c) \quad (37)$$

Solving the system using the Cramer's rule, we obtain the following equations where $\sin \theta_b = s\theta_b$; $\cos \theta_b = c\theta_b$; $\sin \theta_c = s\theta_c$; $\cos \theta_c = c\theta_c$;

$$A = \begin{vmatrix} m_b c\theta_b & m_b s\theta_b & m_c c\theta_b & m_c s\theta_b \\ -m_b s\theta_b & m_b c\theta_b & -m_c s\theta_b & m_c c\theta_b \\ m_b & 0 & -m_c c\theta_c & m_c s\theta_c \\ 0 & m_b & -m_c s\theta_c & m_c c\theta_c \end{vmatrix} \quad (38)$$

$$\begin{bmatrix} a_1 \\ a_2 \\ a_3 \\ a_4 \end{bmatrix} = \begin{bmatrix} m_w r_{wb} - m_c L_b s\theta_b \\ m_w(l_{wb} + L_a) - m_b L_a - m_c L_b c\theta_b - m_c L_a \\ m_w r_{wc} \\ m_w(l_{wc} + L_a) - m_b L_a - m_c(L_a + L_b) \end{bmatrix} \quad (39)$$

$$r_b = \frac{\begin{vmatrix} a_1 & m_b s\theta_b & m_c c\theta_b & m_c s\theta_b \\ a_2 & m_b c\theta_b & -m_c s\theta_b & m_c c\theta_b \\ a_3 & 0 & -m_c c\theta_c & m_c s\theta_c \\ a_4 & m_b & -m_c s\theta_c & m_c s\theta_c \end{vmatrix}}{\det(A)} \quad (40)$$

$$l_b = \frac{\begin{vmatrix} m_b c\theta_b & a_1 & m_c c\theta_b & m_c s\theta_b \\ -m_b s\theta_b & a_2 & -m_c s\theta_b & m_c c\theta_b \\ m_b & a_3 & -m_c c\theta_c & m_c s\theta_c \\ 0 & a_4 & -m_c s\theta_c & m_c s\theta_c \end{vmatrix}}{\det(A)} \quad (41)$$

$$r_c = \frac{\begin{vmatrix} m_b c\theta_b & m_b s\theta_b & a_1 & m_c s\theta_b \\ -m_b s\theta_b & m_b c\theta_b & a_2 & m_c c\theta_b \\ m_b & 0 & a_3 & m_c s\theta_c \\ 0 & m_b & a_4 & m_c s\theta_c \end{vmatrix}}{\det(A)} \quad (42)$$

$$l_c = \frac{\begin{vmatrix} m_b c\theta_b & m_b s\theta_b & m_c c\theta_b & a_1 \\ -m_b s\theta_b & m_b c\theta_b & -m_c s\theta_b & a_2 \\ m_b & 0 & -m_c c\theta_c & a_3 \\ 0 & m_b & -m_c s\theta_c & a_4 \end{vmatrix}}{\det(A)} \quad (43)$$

The proposed representation is general and can be implemented on robots with different types of joints (prismatic, revolute, spherical, helical, etc.). In case of robot conceived in an unconventional way, such as passive or flexible robots or robot with wheels [19–21], the procedure (21) and the formulas from (22) to (27) can be implemented if the two following points are satisfied:

1. Only two force-torque sensors must be the contact elements between the robot and the ground;
2. Joint sensors must give relative position of motion and current values to produce joint motion.

Another advantage of the formulation presented in this paper, as underlined in the first section, is that if the total CoM position of the platform is known a priori, the first formulation proposed in [2,3] and shown in Section 2 of this paper can be bypassed and the CoM positions of each link of the platform can be calculated analytically without using force-torque sensors and motor's torque. In this case, only the formulation of the Section 3 can be used.

4. Validation of the Second Theoretical Formulation

4.1. Example

In order to validate the second theoretical formulation shown in Section 3 (the first theoretical formulation was validated in [2,3] as underlined in Sections 1 and 2), a virtual robot with three links and two DoFs in each leg is used. Figure 6 shows the designed robot and Table 1 shows the characteristics of the robot (lengths of the links, weights, CoMs positions, etc.).

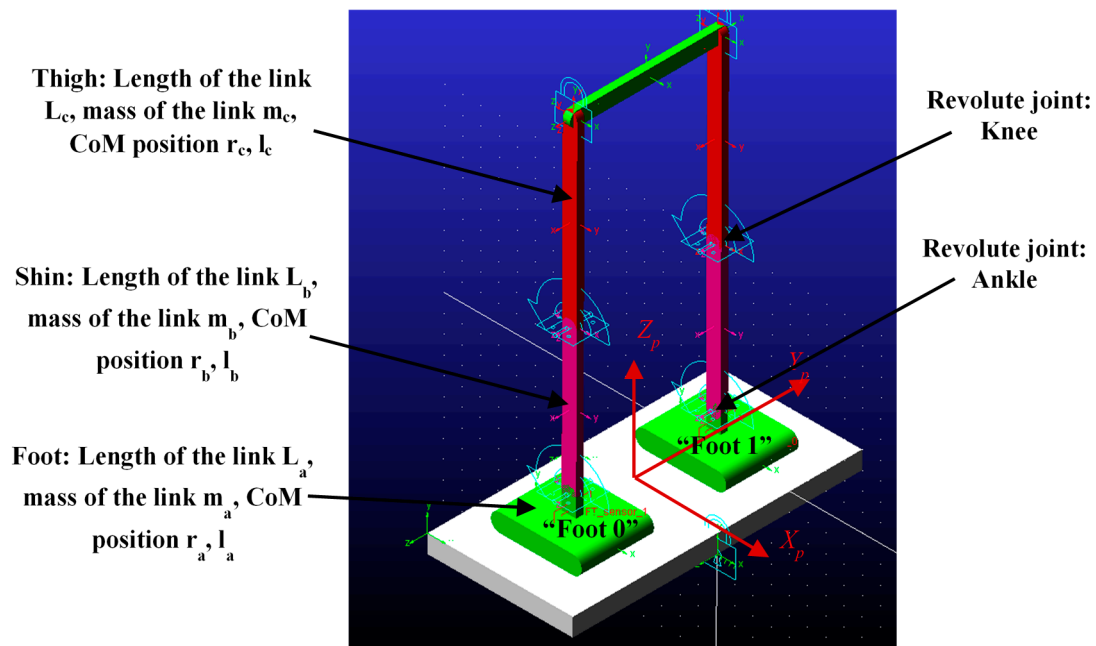


Figure 6. Example for implementing the formula.

Table 1. Characteristics of the robot

Link	Weight [kg]	Absolute CoM Position Respect to			Z_p [mm]	Relative CoM Position in X_p - Z_p Plane [mm]
		X_p	Y_p	Z_p		
Foot 0	6.72	0	-200	26.32	$L_a = 100$	$l_a = 26.32, r_a = 0$
Shin 0	0.95	0	-200	300	$L_b = 400$	$l_b = 200; r_b = 0$
Thigh 0	1.16	0	-200	750	$L_c = 500$	$l_c = 250; r_c = 0$
Foot 1	6.72	0	200	26.32	$L_a = 100$	$l_a = 26.32, r_a = 0$
Shin 1	0.95	0	200	300	$L_b = 400$	$l_b = 200; r_b = 0$
Thigh 1	1.16	0	200	750	$L_c = 500$	$l_c = 250; r_c = 0$
Waist	0.94	0	0	1000	/	/

4.2. Validation

In following, the example shown in Figure 6 with the characteristics shown in Table 1 is implemented in MATLAB using equations presented in Section 3. The validation consists to give as input the total CoM positions of each configuration and to verify that the CoM position of each link of the platform, calculated with the formulations of the Section 3, has the same value used in input.

% MATLAB Example

thb = 10 *pi/180; %radian angle of the link L_b

thc = 10 *pi/180; %radian angle of the link L_c

ma = 6.72; %kg weight of the Foot

mb = 0.95; %kg weight of the link b

mc = 1.16 + 0.94; %kg weight of the link c

mw = mb + mc; %kg

m2 = mu + mw; %kg

ra = 0; %mm position of the CoM of the foot

la = 26.32; %mm position of the CoM of the foot

La = 100; %mm length of the foot in Z_p direction

Lb = 400; %mm length of the shin in Z_p direction

Lc = 500; %mm length of the thigh in Z_p direction

$l_b = 200$; %mm INPUT CONDITION FOR VALIDATION

$l_c = 250$; %mm INPUT CONDITION FOR VALIDATION

$Z2a = (1/m2) * (m_a * l_a + m_b * (L_a + l_b) + m_c * (L_a + l_b + l_c))$; %mm Total CoM position in the configuration a

$X2a = 0$; %mm Total CoM position in the configuration a

$Z2b = (1/m2) * (m_a * l_a + m_b * (L_a + l_b * \cos(\theta_{hb})) + m_c * (L_a + (l_b + l_c) * \cos(\theta_{hb})))$; %mm Total CoM position in the configuration b

$X2b = (1/m2) * (m_b * l_b * \sin(\theta_{hb}) + m_c * (l_b + l_c) * \sin(\theta_{hb}))$; %mm Total CoM position in the configuration b

$Z2c = (1/m2) * (m_a * l_a + m_b * (L_a + l_b) + m_c * (L_a + l_b + l_c * \cos(\theta_{hc})))$; %mm Total CoM position in the configuration c

$X2c = (1/m2) * (m_c * l_c * \sin(\theta_{hc}))$; %mm Total CoM position in the configuration c

$rwb = (X2b * m2 - m_a * r_a)/mw$; %mm from Equations (30) and (31)

$lwb = (Z2b * m2 - m_a * l_a)/mw - L_a$; %mm from Equations (30) and (31)

$rwc = (X2c * m2 - m_a * r_a)/mw$; %mm from Equations (30) and (31)

$lwc = (Z2c * m2 - m_a * l_a)/mw - L_a$; %mm from Equations (30) and (31)

$B = mw * (lwb + L_a) - m_b * L_a - m_c * l_b * \cos(\theta_{hb}) - m_c * L_a$; %change of variables

$C = mw * (lwc + L_a) - m_b * L_a - m_c * (L_a + l_b)$; %change of variables

$\det_A = (m_b * m_c * \cos(\theta_{hb}) * (\cos(\theta_{hc}) - 1))$; %from Equation (38)

$l_{b_validation} = (m_c * (B * \cos(\theta_{hc}) - C * \cos(\theta_{hb}))) / \det_A$; %mm from Equation (41)

$l_{c_validation} = (m_b * (C * \cos(\theta_{hb}) - B)) / \det_A$; %mm from Equation (41)

5. Conclusions

In this paper, an optimized formulation to determine the center of mass position of each link of a multibody biped robot is presented. The formulation is merged with a procedure that can be applied to each types of robot with two force-torque sensors in contact between the robot and the ground and joint sensors. An advantage of the formulation presented in this paper, as underlined in the paper, is that if the total CoM position of the platform is known a priori, the first formulation proposed in [2,3] (and shown in Section 2 of this paper) can be bypassed and the CoM positions of each link of the platform can be calculated analytically without using force-torque sensors and motors torque. In this case, only the formulation of the Section 3 can be used. The validation confirms the functioning of the proposed formulation.

Acknowledgments: The authors would like to express their sincere gratitude to the Humanot Team.

Author Contributions: This research is completely performed by Giovanni Gerardo Muscolo, who also wrote the paper. Darwin Caldwell and Ferdinando Cannella gave support to the first author.

Conflicts of Interest: The authors declare no conflict of interest.

Nomenclature

$G\text{-}XYZ$	global Cartesian system
$P\text{-}XpYpZp$	local Cartesian system
$\vec{a}_2 = [a_{x2}, a_{y2}, a_{z2}]^T$	acceleration vector of the total CoM
m_2	total mass of the robot without feet
$\vec{p}_0 = [-n, -l, e]^T$	position vector of Point 0
$\vec{p}_1 = [o, q, f]^T$	position vector of Point 1
$\vec{p}_2 = [X_2, Y_2, Z_2]^T$	position vector of Point 2
$\vec{M}_0 = [M_{x0}, M_{y0}, M_{z0}]^T$	torque vector of Point 0
$\vec{M}_1 = [M_{x1}, M_{y1}, M_{z1}]^T$	torque vector of Point 1

$\vec{M}_2 = [M_{x2}, M_{y2}, M_{z2}]^T$	torque vector of Point 2
$\vec{F}_0 = [F_{x0}, F_{y0}, F_{z0}]^T$	force vector of Point 0
$\vec{F}_1 = [F_{x1}, F_{y1}, F_{z1}]^T$	force vector of Point 1
$\vec{F}_2 = [F_{x2}, F_{y2}, F_{z2}]^T$	force vector of Point 2
$\vec{M}_P = [M_{xP}, M_{yP}, M_{zP}]^T$	torque vector of the resultant moment calculated with respect to the local Cartesian system $P\text{-}X_P Y_P Z_P$
$\sum M_{j_roll}, \sum M_{j_pitch}, \sum M_{j_yaw}$	torques of all roll, pitch, and yaw motors of the robot
X_{2A}, Y_{2A}, Z_{2A}	position of the centre of mass of the platform in the configuration A
X_{2B}, Y_{2B}, Z_{2B}	position of the centre of mass of the platform in the configuration B
m_u, r_u, q_u, l_u	mass and position of the centre of mass of the robot ankle link from the floor to the ankle joint
U	length of the ankle
m_w, r_w, q_w, l_w	mass and the position of the centre of mass of the remaining links of the platform
θ_i	angle used in the configuration B
K	constant parameter set for each motor
I	current necessary for the motor function
$\alpha_i, \beta_i, \gamma_i, \delta_i$	four novel coefficients for the configuration i
$\alpha_j, \beta_j, \gamma_j, \delta_j$	four novel coefficients for the configuration j
n	degrees of freedom of the platform
k	number of the configurations to calculate positions of the CoM for each link of the system
i, j	used configurations to calculate the CoM of each link
$\vec{t}_i = [r_{wi} \quad q_{wi} \quad l_{wi} + U]^T$	vector position of m_w
r_{wi}, q_{wi}, l_{wi}	components of the vector position $\vec{t}_i = [r_{wi} \quad q_{wi} \quad l_{wi} + U]^T$ respectively in X_P, Y_P and Z_P directions
χ_i and ε_i	angles of the vector position $\vec{t}_i = [r_{wi} \quad q_{wi} \quad l_{wi} + U]^T$ with the the local reference system $P\text{-}X_P Y_P Z_P$
\vec{t}_b and \vec{t}_c	position vectors of the mass m_w respect to the local reference system $P\text{-}X_P Y_P Z_P$ and respectively of the configurations b and c
\vec{s}_b and \vec{s}_c	position vectors of the masses m_b and m_c respect to the local reference system of each link

References

1. Sugano, S.; Kato, I. WABOT-2: Autonomous robot with dexterous finger-arm-Finger-arm coordination control in keyboard performance. In Proceedings of the IEEE International Conference on Robotics and Automation (ICRA 1987), Raleigh, NC, USA, 31 March–3 April 1987; pp. 90–97.
2. Muscolo, G.G.; Recchiuto, C.T.; Hashimoto, K.; Laschi, C.; Dario, P.; Takanishi, A. A Method for the calculation of the effective Center of Mass of Humanoid robots. In Proceedings of the 11th IEEE-RAS International Conference on Humanoid Robots (Humanoids 2011), Bled, Slovenia, 26–28 October 2011.
3. Muscolo, G.G.; Recchiuto, C.T.; Molino, R. Dynamic balance optimization in biped robots: Physical modeling, implementation and tests using an innovative formula. *Robotica* **2015**, *33*, 2083–2099.
4. Muscolo, G.G.; Hashimoto, K.; Takanishi, A.; Dario, P. A comparison between two force-position controllers with gravity compensation simulated on a humanoid arm. *J. Robot.* **2013**, *2013*, 4, doi:10.1155/2013/256364.
5. Otani, T.; Kenji Hashimoto, Miyamae, S., Ueta, H., Sakaguchi, M., Kawakami, Y., Hun-ok Lim and Takanishi, A. Angular Momentum Compensation in Yaw Direction using Upper Body based on Human Running. In Proceedings of the IEEE International Conference on Robotics and Automation (ICRA 2017), Singapore, 29 May–3 June 2017.
6. Boston Dynamics 2013: Cheetah—Fastest Legged Robot. Available online: <http://bostondynamics.com/robot-cheetah.html> (accessed on 15 April 2017).
7. Raibert, M. Dynamic legged robots for rough terrain. In Proceedings of the 10th IEEE-RAS International Conference on Humanoid Robots (Humanoids 2010), Nashville, TN, USA, 13 January 2011; p. 1.
8. Cass Stephen. DARPA Unveils Atlas DRC Robot, July 2013. Available online: <http://spectrum.ieee.org/automaton/robotics/humanoids/darpa-unveilsatlas-drc-robot> (accessed on 28 March 2017).

9. Boston Dynamics 2013: Atlas—The Agile Anthropomorphic Robot (2013). Available online: http://www.bostondynamics.com/robot_Atlas.html (accessed on 1 April 2017).
10. Boston Dynamics 2017: Introducing Handle. Available online: <https://www.youtube.com/watch?v=7xvqQeoA8c> (accessed on 8 May 2017).
11. Kim, J.-H.; Kim, J.-Y.; Oh, J.-H. Adjustment of Home Posture of Biped Humanoid Robot Using an Inertial Sensor and Force Torque Sensors. In Proceedings of the 2007 IEEE/RSJ International Conference on Intelligent Robots and Systems, San Diego, CA, USA, 29 October–2 November 2007.
12. Nunez, V.; Nadjar-Gauthier, N.; Yokoi, K.; Blazevic, P.; Stasse, O. Inertial Forces Posture Control for Humanoid Robots Locomotion. In *Humanoid Robots: Human-like Machines*; Hackel, M., Ed.; Itech: Vienna, Austria, 2007; p. 642.
13. Kwon, S.J.; Oh, Y. Estimation of the Center of Mass of Humanoid Robot. In Proceedings of the 2007 International Conference on Control, Automation and Systems, COEX, Seoul, Korea, 17–20 October 2007.
14. Ayusawa, K.; Venture, G.; Nakamura, Y. Identification of Humanoid Robots Dynamics Using Floating-base Motion Dynamics. In Proceedings of the 2008 IEEE/RSJ International Conference on Intelligent Robots and Systems, Acropolis Convention Center, Nice, France, 22–26 September 2008.
15. Sujan, V.A.; Dubowsky, S. An Optimal Information Method for Mobile Manipulator Dynamic Parameter Identification. *IEEE/ASME Trans. Mechatron.* **2003**, *2*, 215–225.
16. Liu, G.; Iagnemma, K.; Dubowsky, S.; Morel, G. A Base Force/Torque Sensor Approach to Robot Manipulator Inertial Parameter Estimation. In Proceedings of the 1998 IEEE International Conference on Robotics & Automation, Leuven, Belgium, 20–22 May 1998.
17. Khalil, W.; Gautier, M.; Lemoine, P. Identification of the payload inertial parameters of industrial manipulators. In Proceedings of the 2007 IEEE International Conference on Robotics and Automation, Roma, Italy, 10–14 April 2007.
18. Swevers, J.; Ganseman, C.; Tukel, D.B.; De Schutter, J.; Van Brussel, H. Optimal Robot Excitation and Identification. *IEEE Trans. Robot. Autom.* **1997**, *13*, 730–740.
19. Muscolo, G.G.; Recchiuto, C.T. Flexible Structure and Wheeled Feet to Simplify Biped Locomotion of Humanoid Robots. *Int. J. Hum. Robot.* **2017**, *14*, doi:10.1142/S0219843616500304.
20. Muscolo, G.G.; Caldwell, D.; Cannella, F. Multibody Dynamics of a Flexible Legged Robot with Wheeled Feet. In Proceedings of the ECCOMAS Thematic Conference on Multibody Dynamics, Prague, Czech Republic, 19–22 June 2017.
21. Muscolo, G.G.; Caldwell, D.; Cannella, F. Biomechanics of Human Locomotion with Constraints to Design Flexible-Wheeled Biped Robots. In Proceedings of the AIM 2017/IEEE International Conference on Advanced Intelligent Mechatronics, Munich, Germany, 3–7 July 2017.



© 2017 by the authors. Licensee MDPI, Basel, Switzerland. This article is an open access article distributed under the terms and conditions of the Creative Commons Attribution (CC BY) license (<http://creativecommons.org/licenses/by/4.0/>).