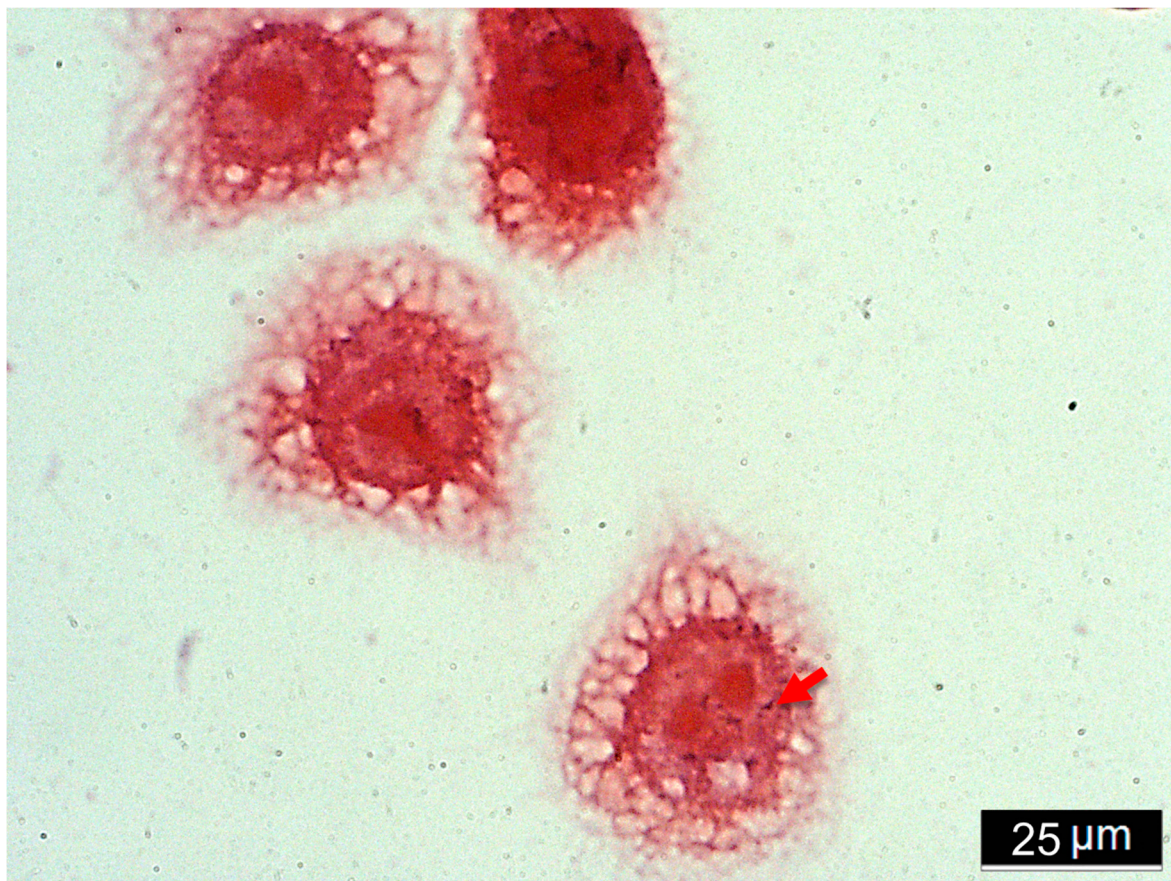


# The Antifungal Effect of *Weissella confusa* WIKIM51 (Wilac D001) on Vaginal Epithelial Cells Infected by *Candida albicans*

## Supplementary Information



**Supplementary Figure S1. Gram staining of adherent VECs Wilac D001 under microscopy.**

VECs were surrounded by *W. confusa* after 1 h of incubation. Red arrow indicates Wilac D001. Scale bar = 25μm. Magnification, x1,000.

**Supplementary Table S1. Culture conditions of microorganism.**

Microorganism		Storage Conditions				
Strain	Organism	Medium	Atmosphere	Temp	Medium	Temp
<i>Weissella confusa</i>	Bacteria	MRS	Aerobic	37°C	40% glycerol	-80°C
<i>Lactobacillus reuteri</i>	Bacteria	MRS	Aerobic;	37°C	40% glycerol	-80°C
<i>Lactobacillus rhamnosus</i>	Bacteria	MRS	Aerobic;	37°C	40% glycerol	-80°C
<i>Candida albicans</i>	Yeast	YM	Anerobic	26°C	30% glycerol	-80°C

Every strain followed the recommended medium and protocol. After confirming the standard curves to count colony-forming units under OD 600nm, they were kept at -80°C before use in each experiment. For the experiments, *C. albicans* were cultured in YM broth media for 24 h at 26 °C in a shaking incubator at 100 rpm. The stock culture of bacteria strains, including *W. confusa*, *L. reuteri*, and *L. rhamnosus*, was activated in MRS broth media for 24 h at 37 °C in a shaking incubator at 100 rpm.