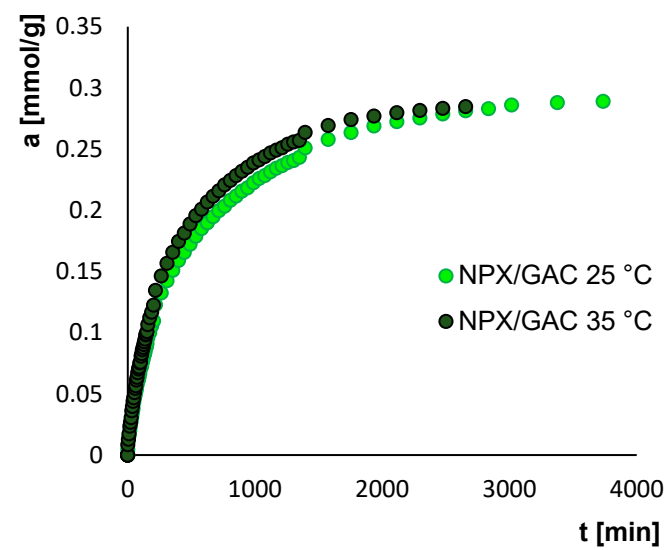
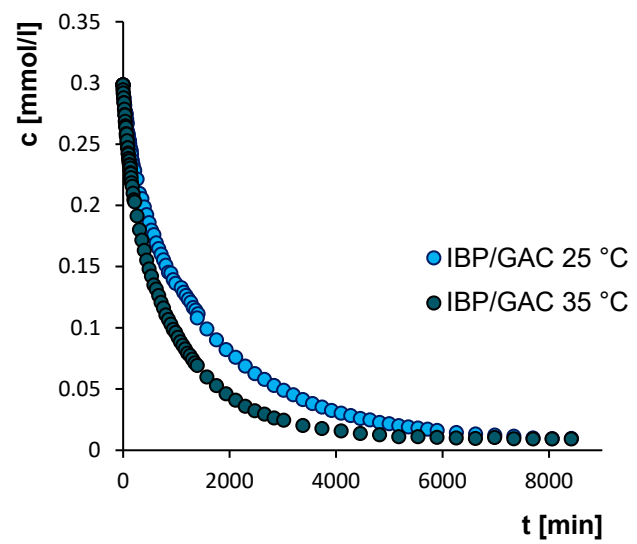


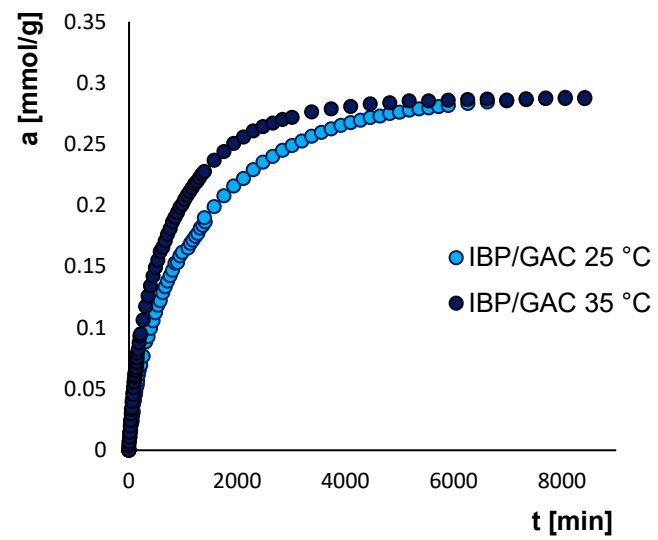
(a)



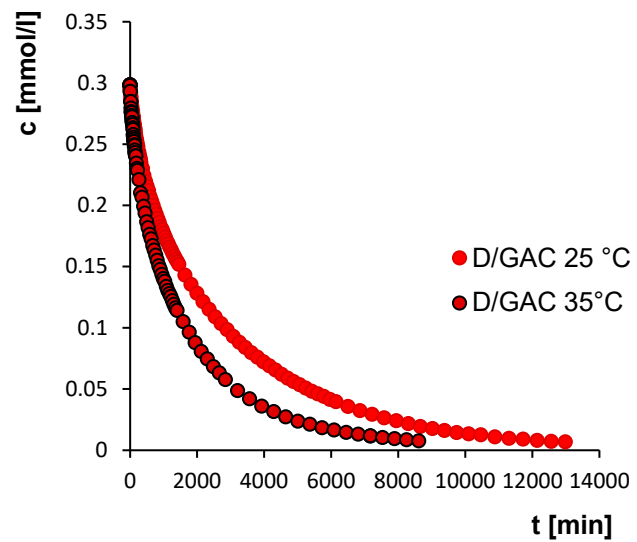
(b)



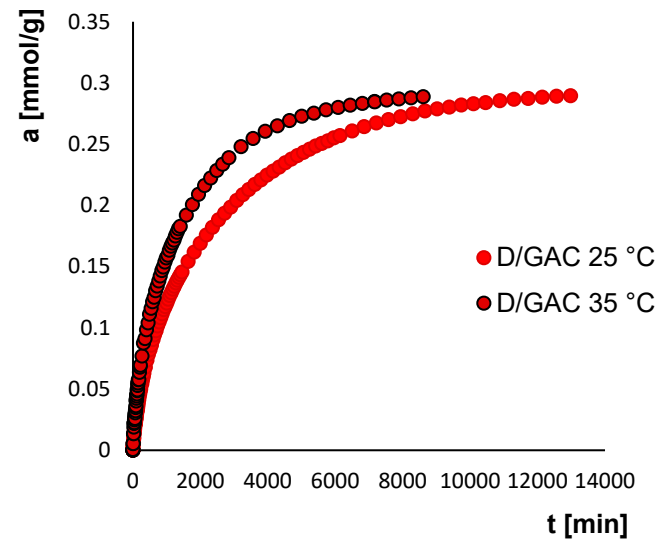
(c)



(d)

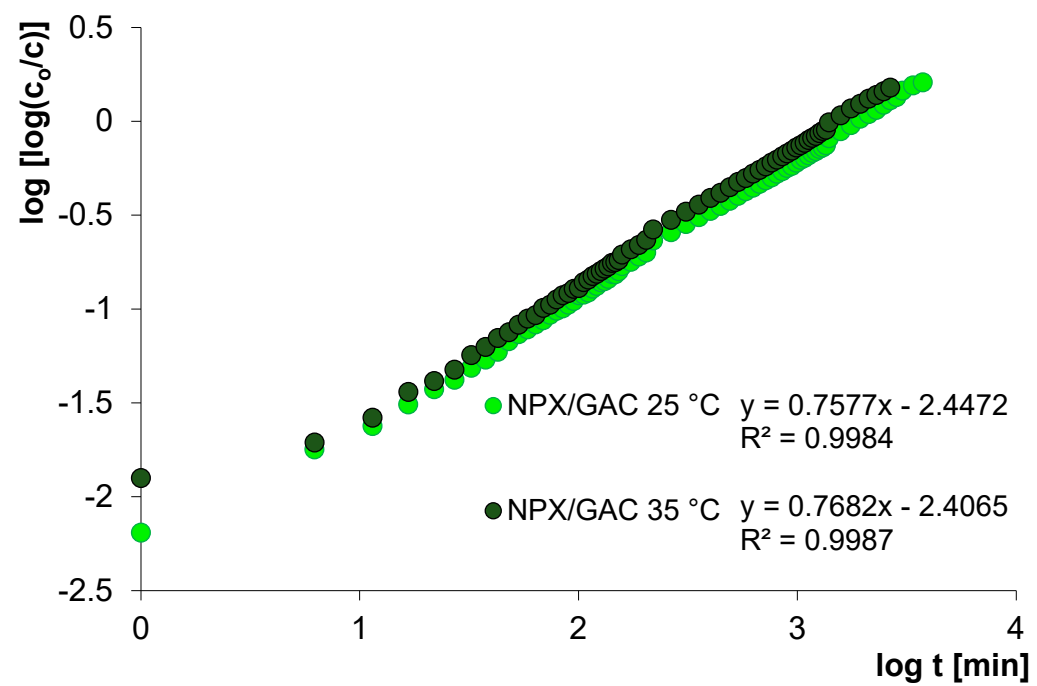


(e)

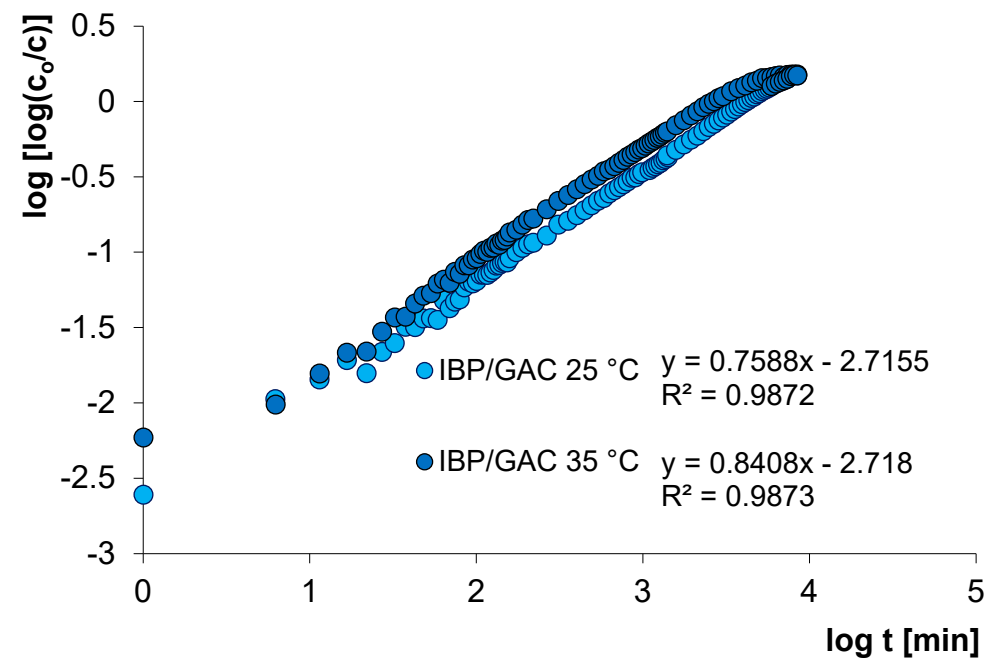


(f)

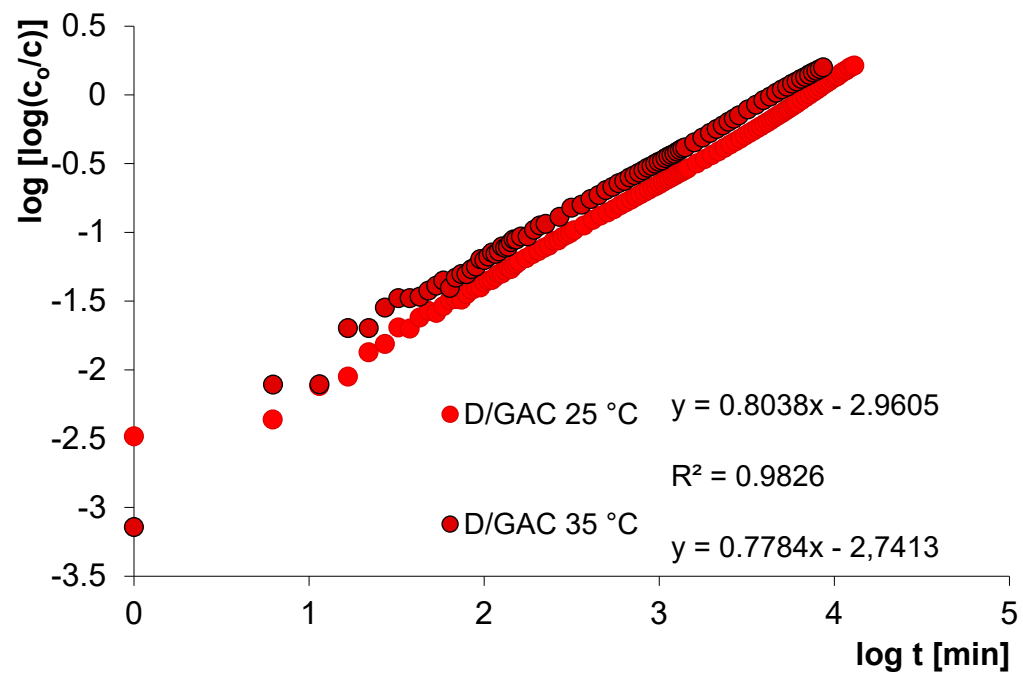
Figure S1. The adsorption kinetic for naproxen sodium (a, b), ibuprofen sodium (c, d) and diclofenac sodium (e, f) on activated carbon GAC presented as changes in concentration (a, c, e) and adsorption (b, d, f) over time at 25 and 35 °C.



(a)



(b)



(c)

Figure S2. The Bangham plots for naproxen sodium (a), ibuprofen sodium (b) and diclofenac sodium (c) adsorption on activated carbon GAC at 25 and 35 °C.

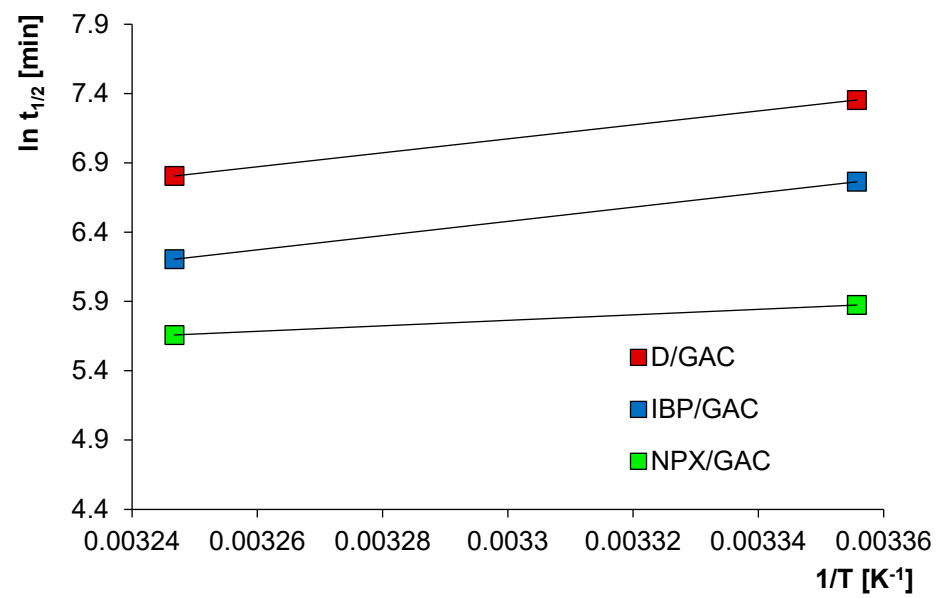


Figure S3. The dependence of logarithm of half-times on $1/T$ for naproxen sodium, ibuprofen sodium and diclofenac sodium adsorption on activated carbon GAC at 25 and 35 °C.