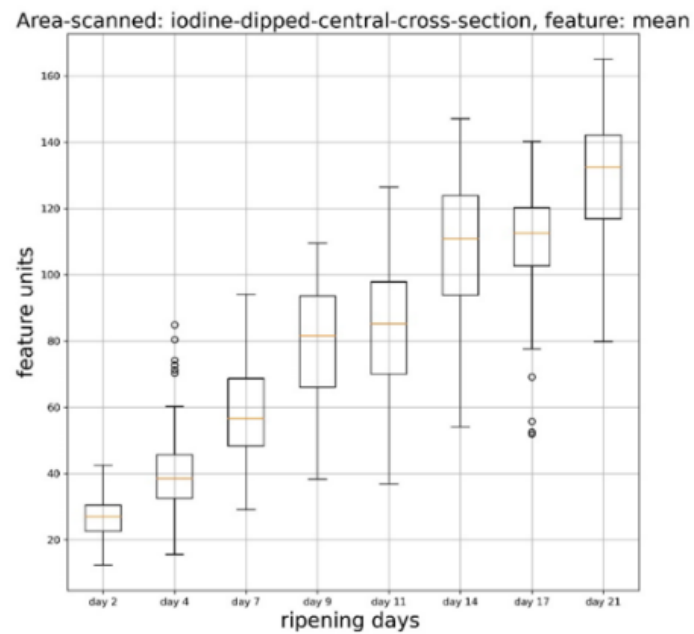


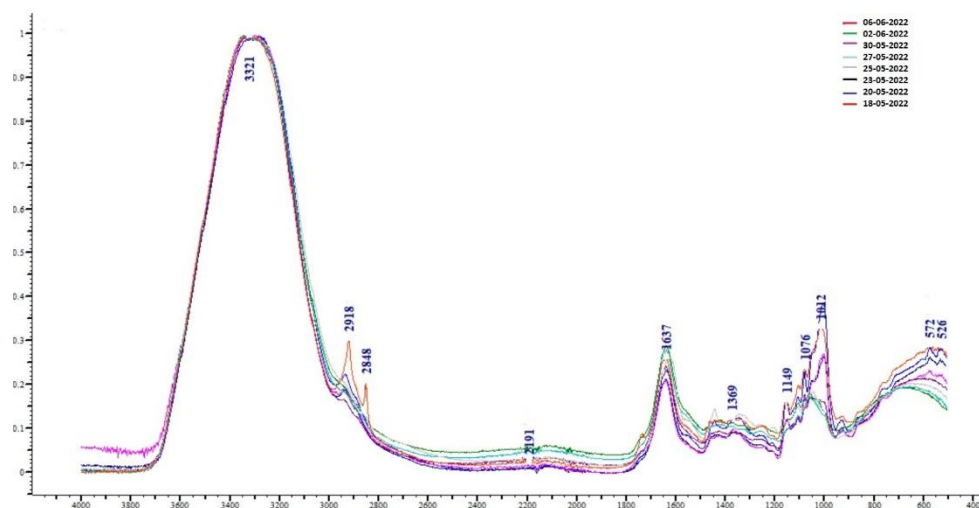
**Table S1.** Image analysis computed color parameters ( $L^*$ ,  $a^*$ ,  $b^*$ ) of banana peel samples, at days 2, 4, 7, 9, 11, 14, 17, 21 of storage.

Days	$L^*$	$a^*$	$b^*$
2	$65.206 \pm 6.193^a$	$-2.760 \pm 1.216^a$	$8.016 \pm 3.699^a$
4	$70.199 \pm 4.795^b$	$-1.001 \pm 0.541^b$	$2.787 \pm 1.522^b$
7	$62.747 \pm 5.134^c$	$-0.219 \pm 0.524^c$	$0.630 \pm 1.411^c$
9	$60.192 \pm 6.74^{cd}$	$0.852 \pm 0.787^d$	$-2.181 \pm 2.019^d$
11	$59.489 \pm 5.487^d$	$0.572 \pm 0.670^d$	$-1.439 \pm 1.739^d$
14	$55.500 \pm 7.030^e$	$1.972 \pm 0.834^e$	$-5.024 \pm 2.060^e$
17	$50.658 \pm 8.014^f$	$2.459 \pm 1.005^f$	$-6.241 \pm 2.430^f$
21	$37.216 \pm 9.446^g$	$2.957 \pm 0.714^g$	$-7.403 \pm 1.719^g$

\*Results represent feature mean value  $\pm$  standard deviation ( $n = 8$ ); a-g: Different letters after each value in the same column indicate statistically significant differences ( $P < 0.05$ ) according to Wilcoxon test.



**Figure S1.** Variation of feature mean value of all grayscale image pixels intensities of banana flesh slices after iodine test, at days 2, 4, 7, 9, 11, 14, 17, 21 of storage.



**Figure S2.** Overlay of ATR-FTIR spectra, acquired from 4000 to 499  $\text{cm}^{-1}$  of banana flesh at days 2 (18-05-2022), 4 (20-05-2022), 7 (23-05-2022), 9 (25-05-2022), 11 (27-05-2022), 14 (30-05-2022), 17 (02-06-2022), 21 (06-06-2022) of storage.