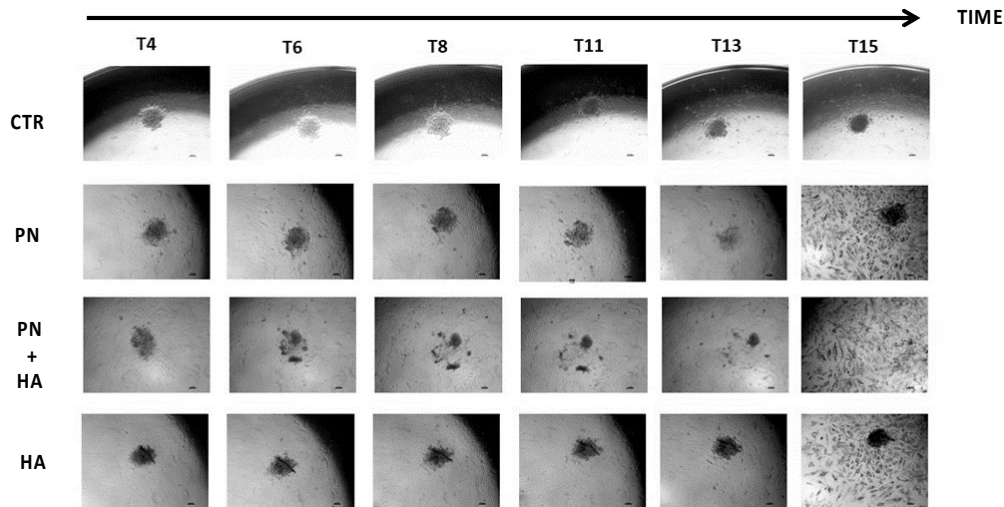


**Figure S1.** Spheroids were cultured on special plates and followed up for eight days (Time arrow). These microphotographs show the daily changes in spheroid dimension under different culture conditions: vehicle-treated samples (Control), Polynucleotides alone (PN), Hyaluronic acid alone (HA), or Polynucleotides in combination with Hyaluronic acid (PN + HA). Spheroids were observed Magnification = 10X.



**Figure S2.** Spheroids were cultured for eight days under different stimuli (vehicle-treated samples—CTR, Polynucleotides alone—PN, Hyaluronic acid alone—HA, or Polynucleotides in combination with Hyaluronic acid—PN + HA) and then re-plated in routine multi-well culture plates and cultured for 15 more days (Time arrow) using a regular medium. These microphotographs show the daily changes in cell distribution at the inverted optical microscope. Magnification = 4X.