

Supplementary information

Table S1. BET surface area of RH-BC and WD-BC

Biochar	BET surface area (m ² /g)
WD-BC	211.14
RH-BC	205.60

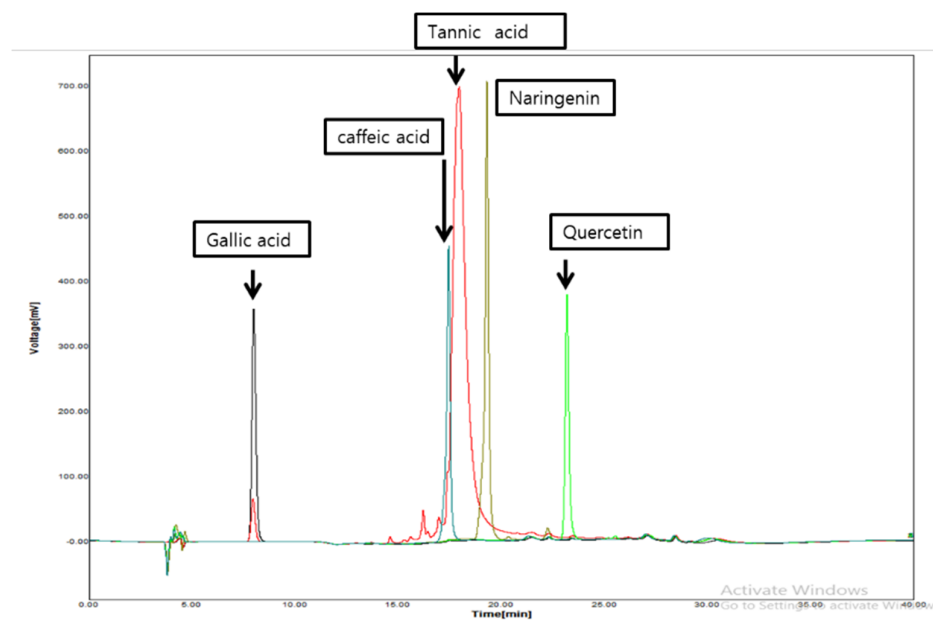


Figure S1. HPLC spectra of authentic polyphenols for polyphenols analysis.

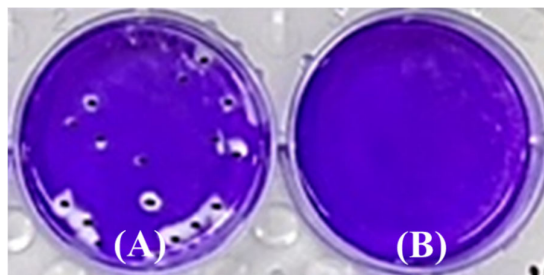


Figure S2. Inhibitory effects of RH-BC (A) without *C. myrrha* (T.Nees) Engl. resin extracts, and RH-BC (B) coated with *C. myrrha* (T.Nees) Engl. resin extracts against the H1N1 influenza virus using plaque assay.

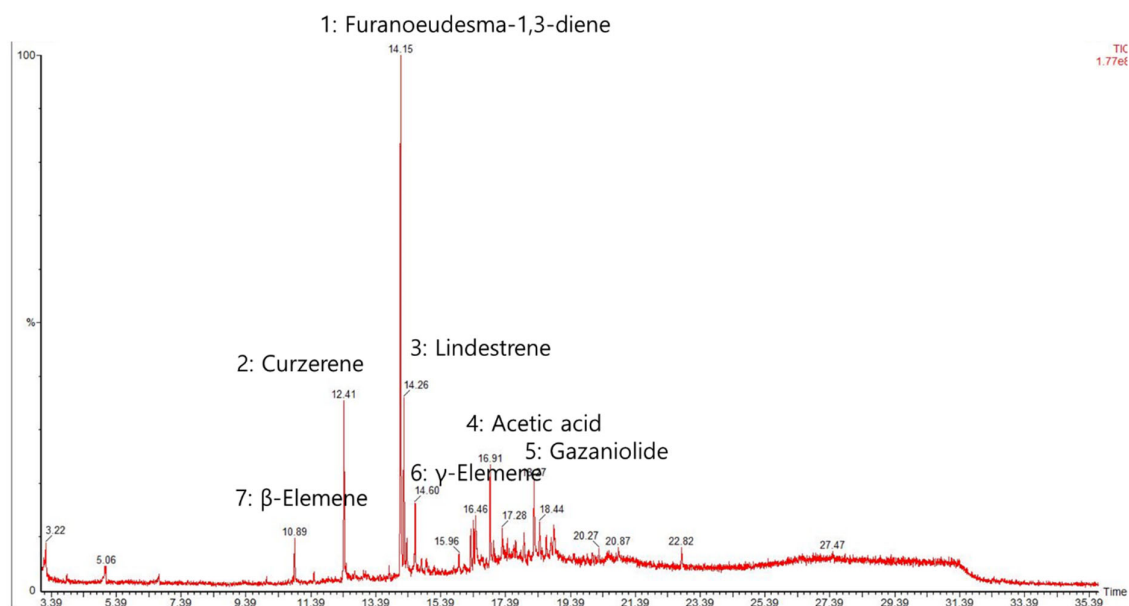


Figure S3. GC-MS spectra of *C. myrrha* (T.Nees) Engl. resin extracts for terpenoids analysis.

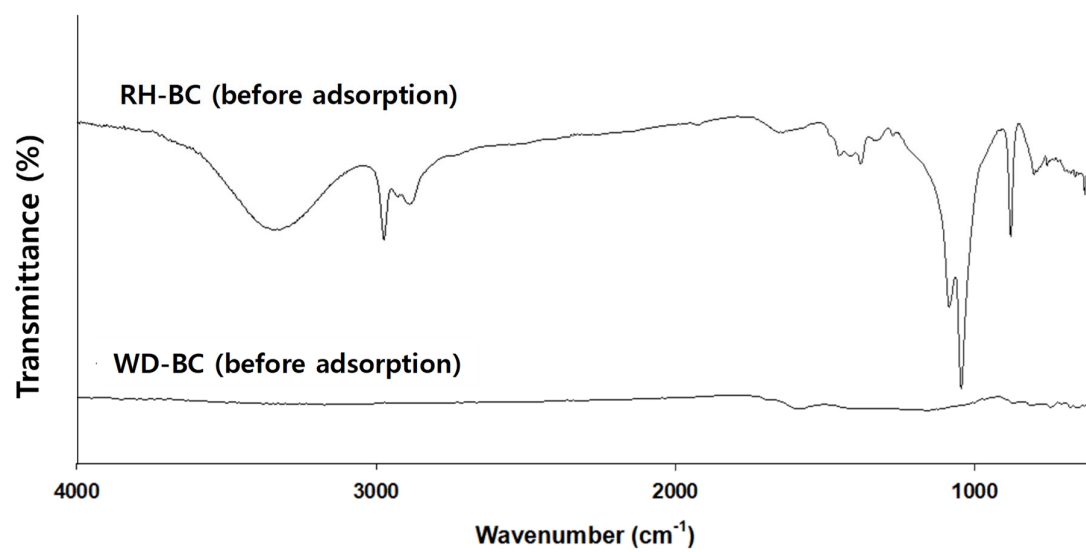


Figure S4. FTIR spectra of RH-BC and WD-BC before *C. myrrha* (T.Nees) Engl. resin extracts adsorption.