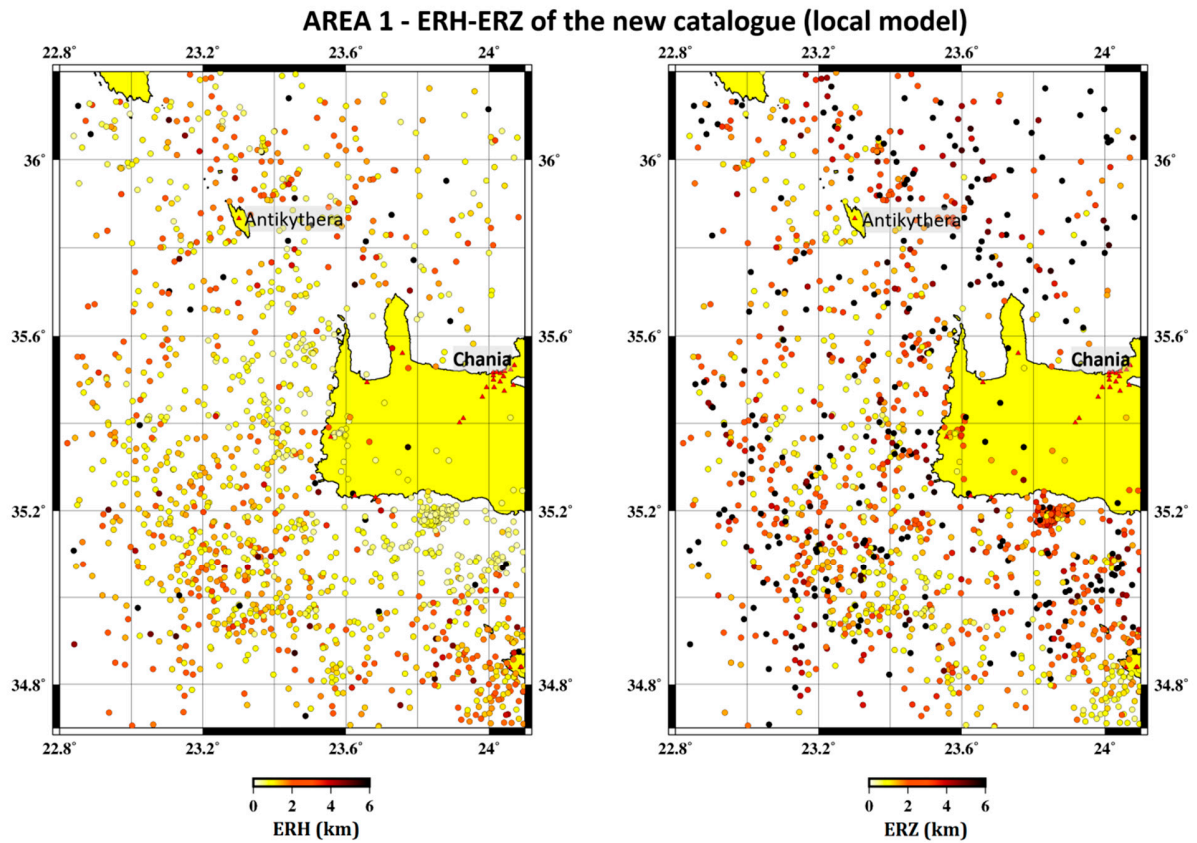


## Contents of this file

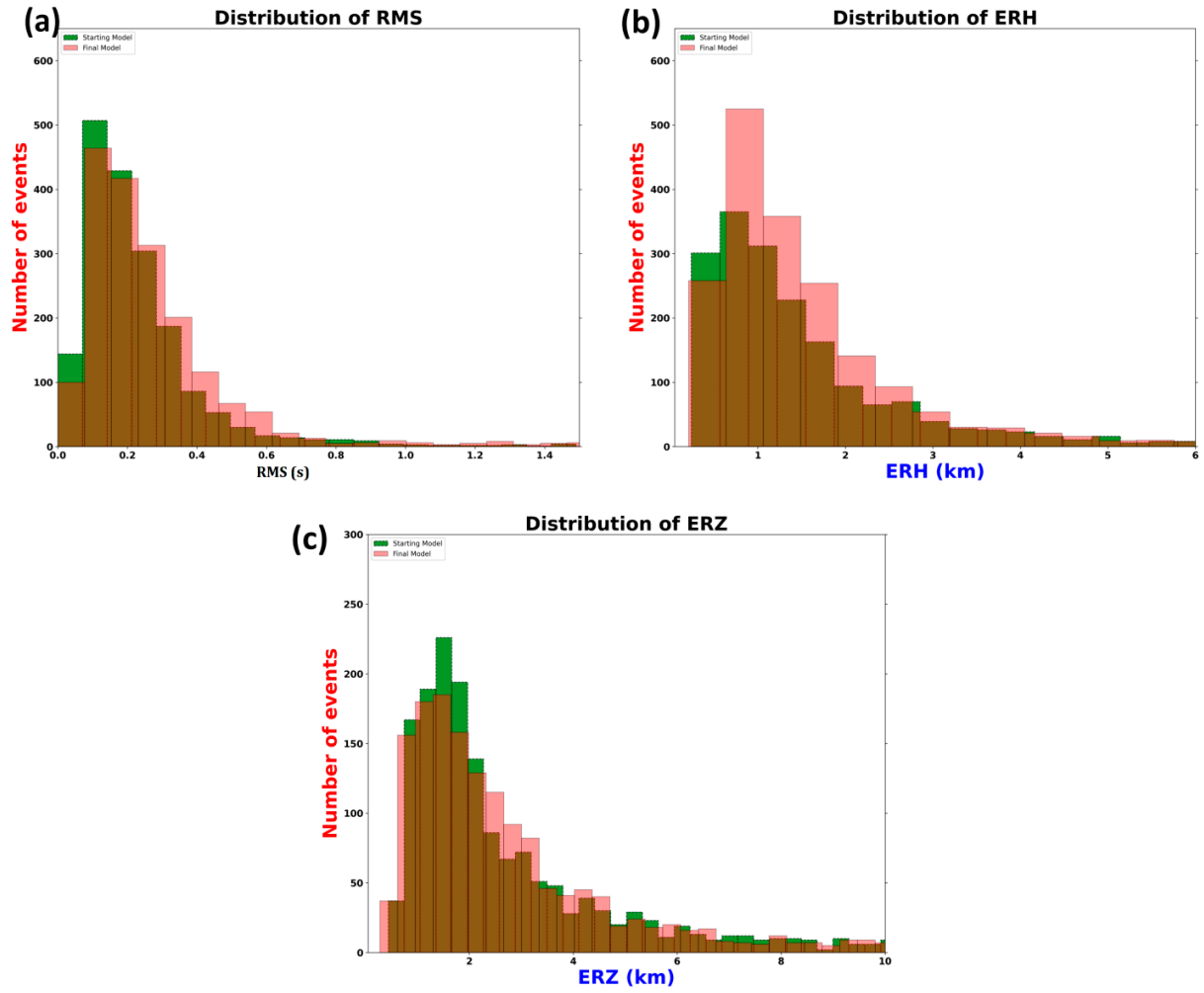
1. Introduction
2. Figure S1
3. Figure S2
4. Figure S3
5. Figure S4
6. Figure S5
7. Figure S6
8. Figure S7
9. Figure S8
10. Figure S9
11. Figure S10
12. Figure S11
13. Figure S12
14. Figure S13
15. Figure S14
16. Figure S15
17. Figure S16
18. Figure S17

## Introduction

This supporting information provides additional figures that show the distribution of the seismic events using the final P-S velocity model in the regions described in the main article, the projection of horizontal (ERH), and vertical uncertainty (ERZ), as well as the located and relocated events of the earthquake catalogue using hypoDD.

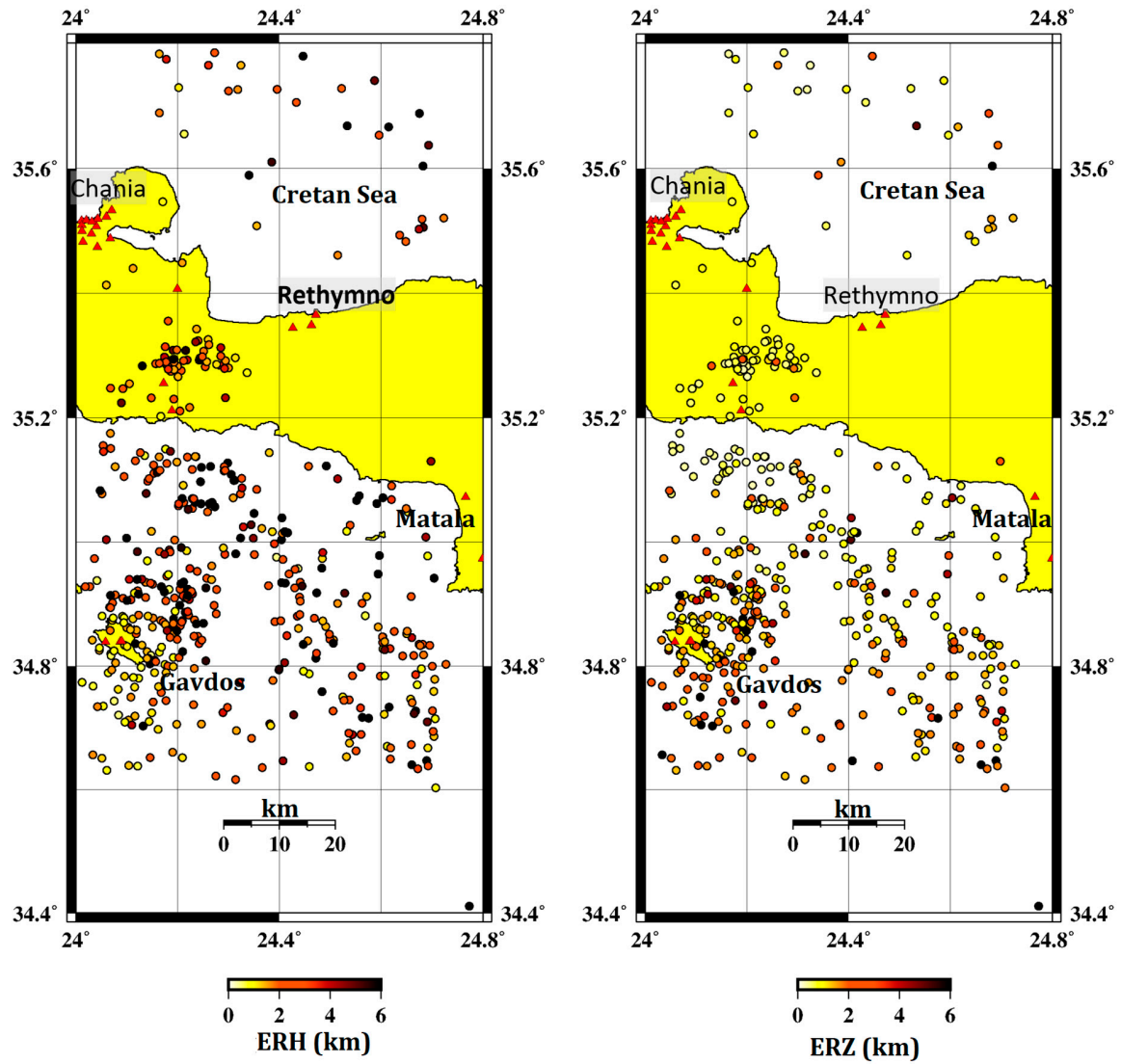


**Figure S1.** Distribution of the seismic events using the final P-S velocity model in region 1. The absolute locations are plotted as a function of horizontal uncertainty or ERH (left), and vertical uncertainty or ERZ (right).



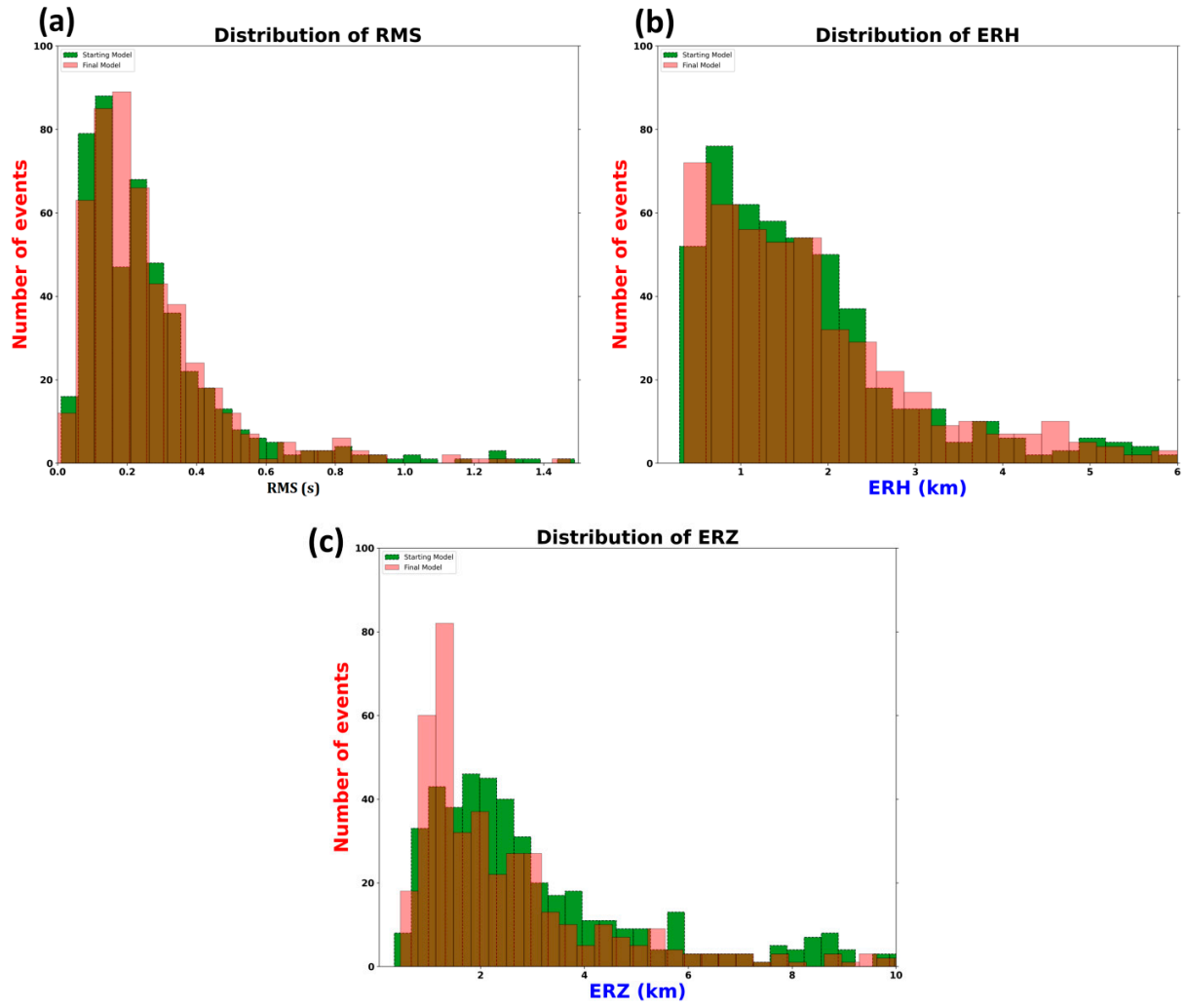
**Figure S2.** Histogram of the error statistics in region 1 between the model of [39] (green), and the final 1-D model (red) obtained in this study.

## AREA 2 - ERH-ERZ of the new catalogue (local model)



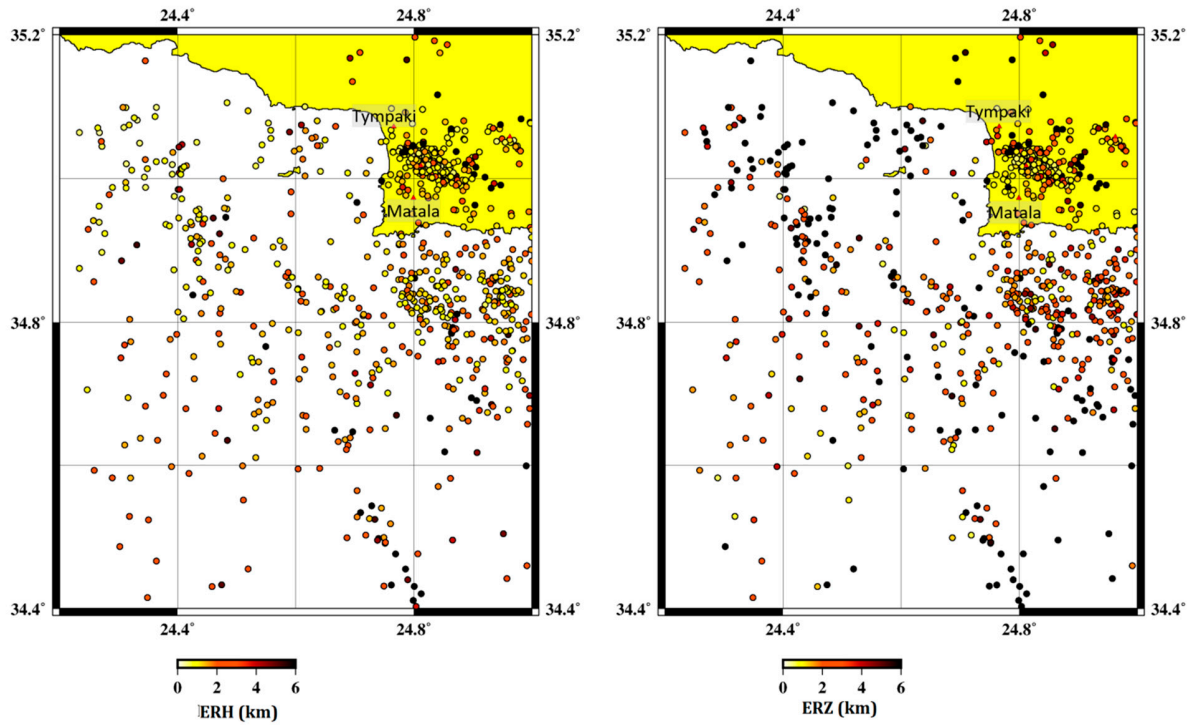
**Figure S3.** Distribution of the seismic events using the final P-S velocity model in region 2. The absolute locations are plotted as a function of horizontal uncertainty or ERH (left), and vertical uncertainty or ERZ (right).



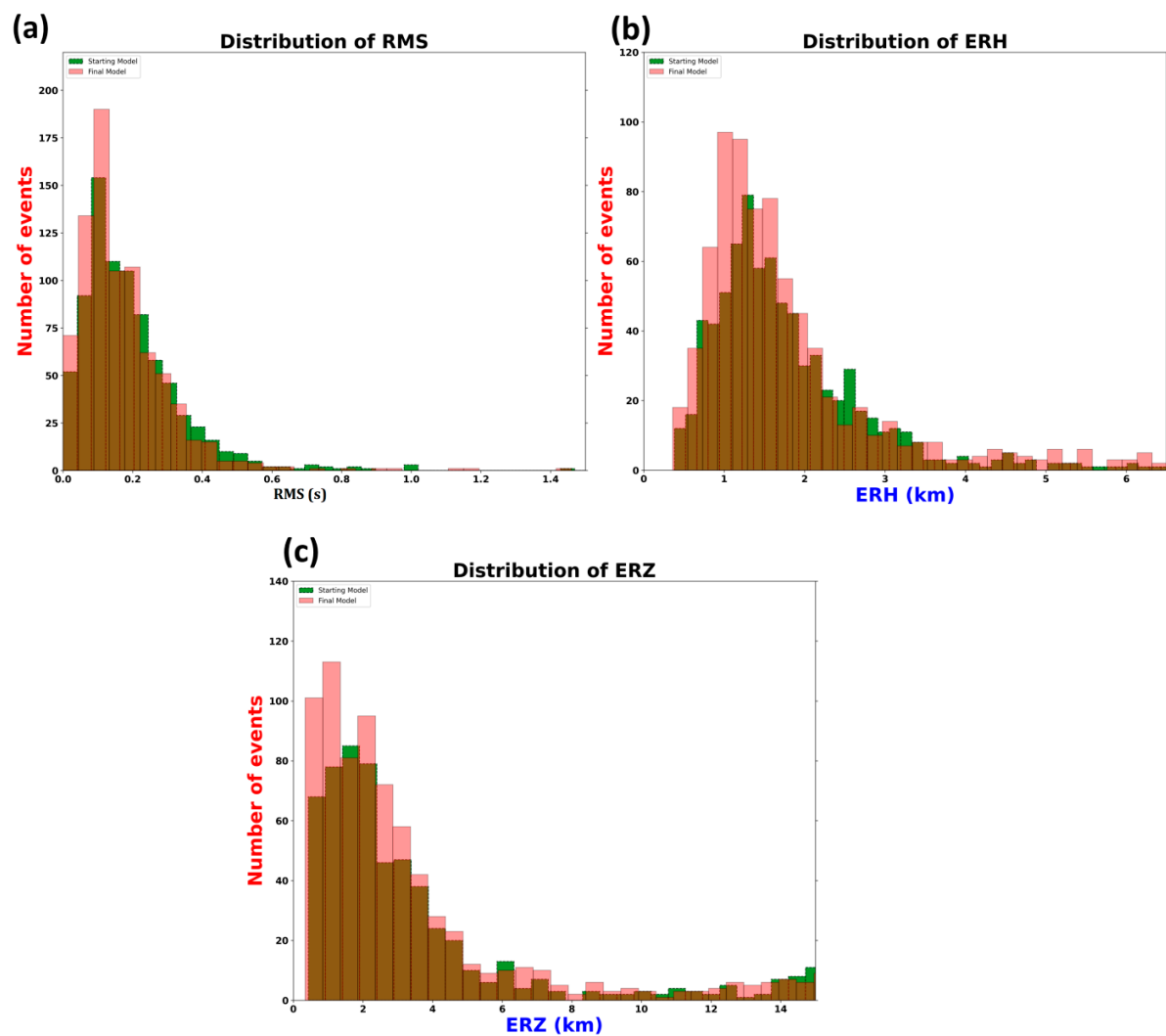


**Figure S4.** Histogram of the error statistics in region 2 between the model of [39] (green), and the final 1-D model (red) obtained in this study.

### AREA 3 - ERH-ERZ of the new catalogue (local model)

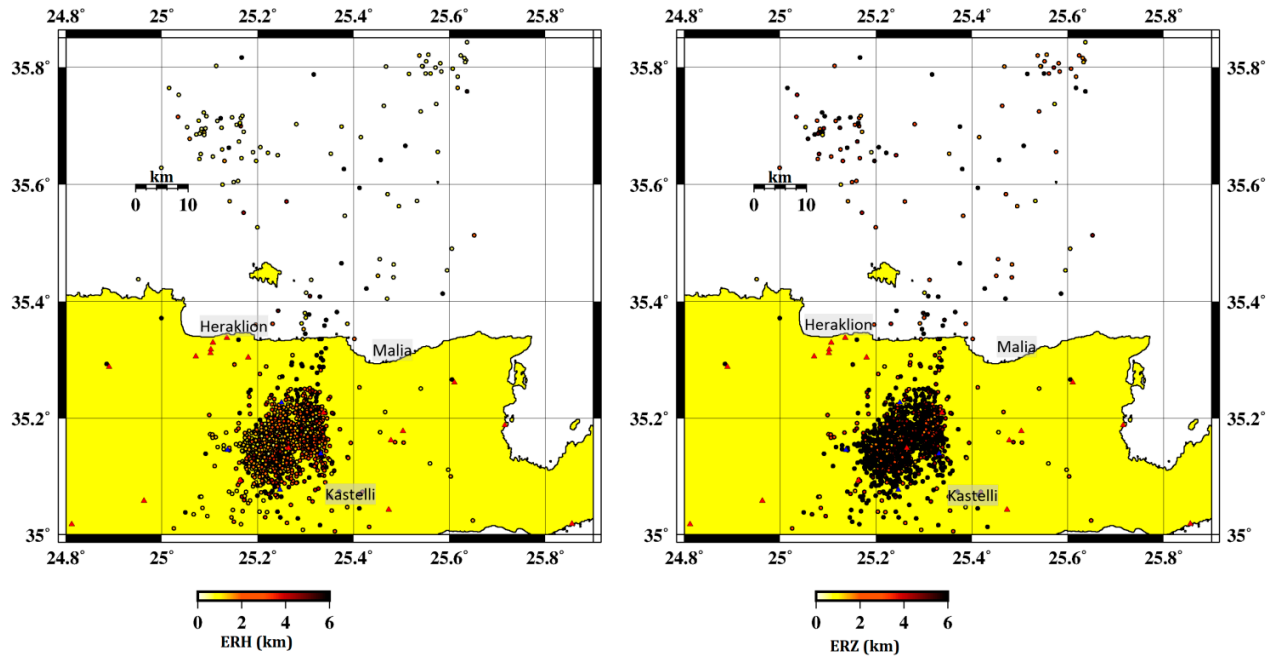


**Figure S5.** Distribution of the seismic events using the final P-S velocity model in region 3. The absolute locations are plotted as a function of horizontal uncertainty or ERH (left), and vertical uncertainty or ERZ (right).

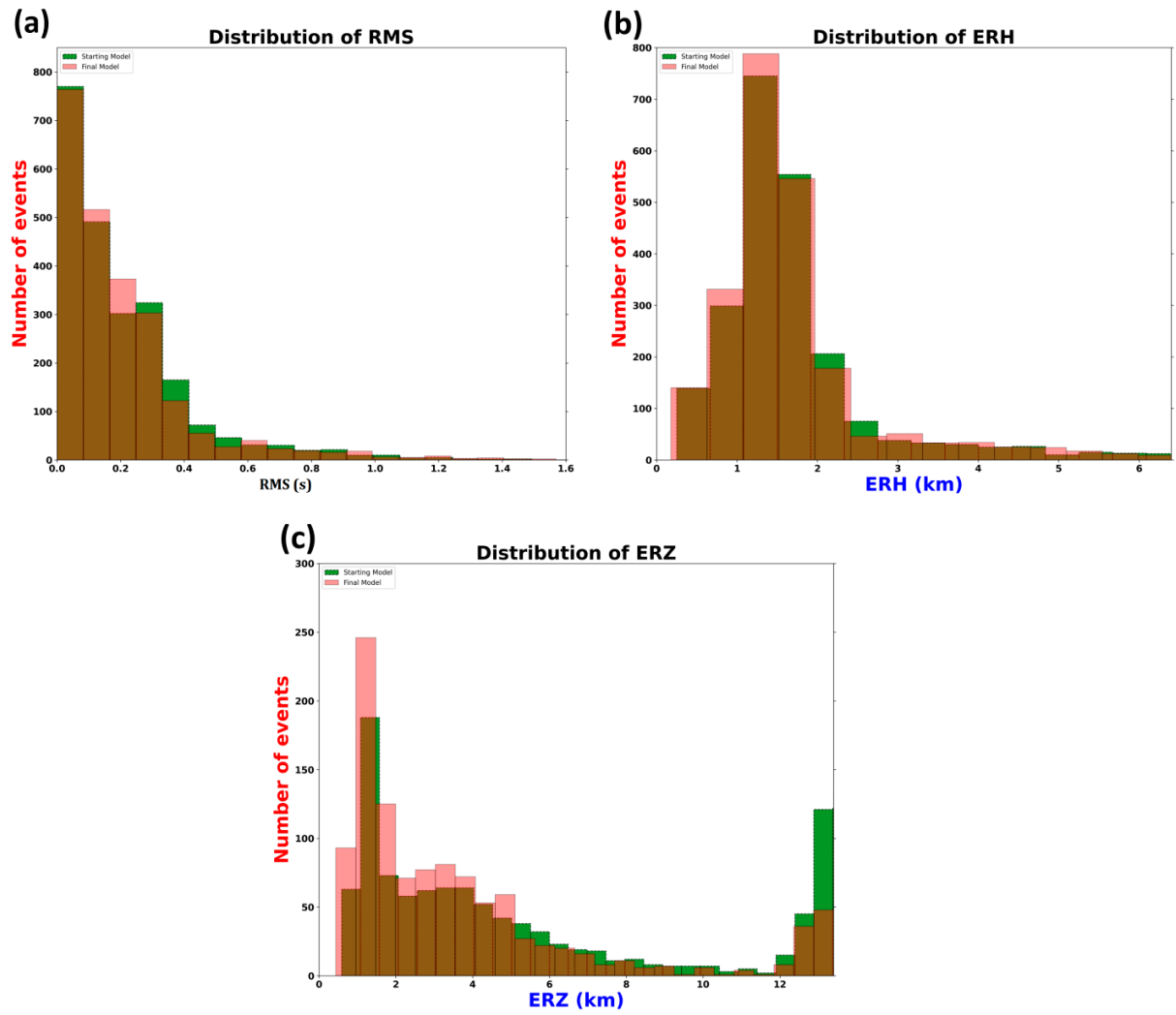


**Figure S6.** Histogram of the error statistics in region 3 between the model of [39] (green), and the final 1-D model (red) obtained in this study.

AREA 4 - ERH-ERZ of the new catalogue (local model)

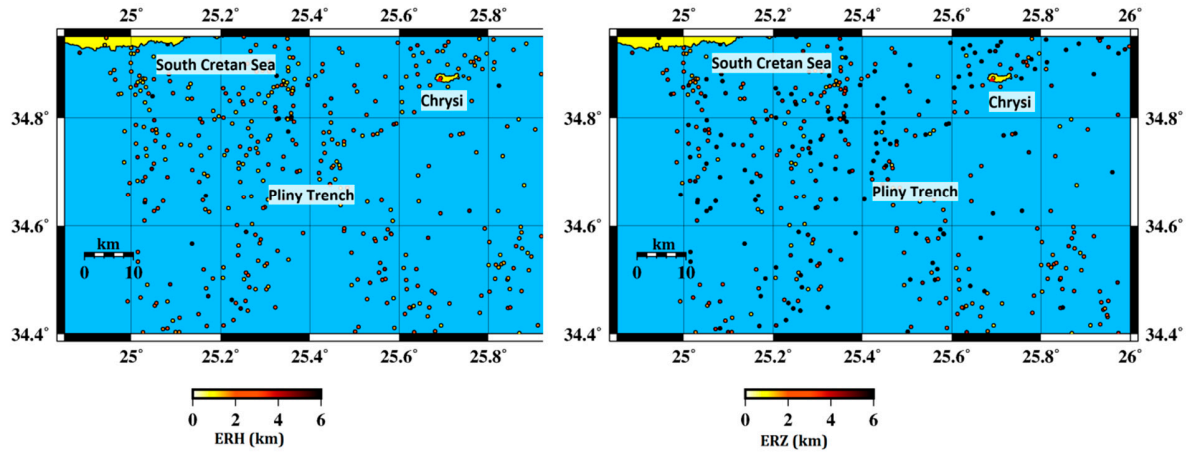


**Figure S7.** Distribution of the seismic events using the final P-S velocity model in region 4 The absolute locations are plotted as a function of horizontal uncertainty or ERH (left), and vertical uncertainty or ERZ (right).

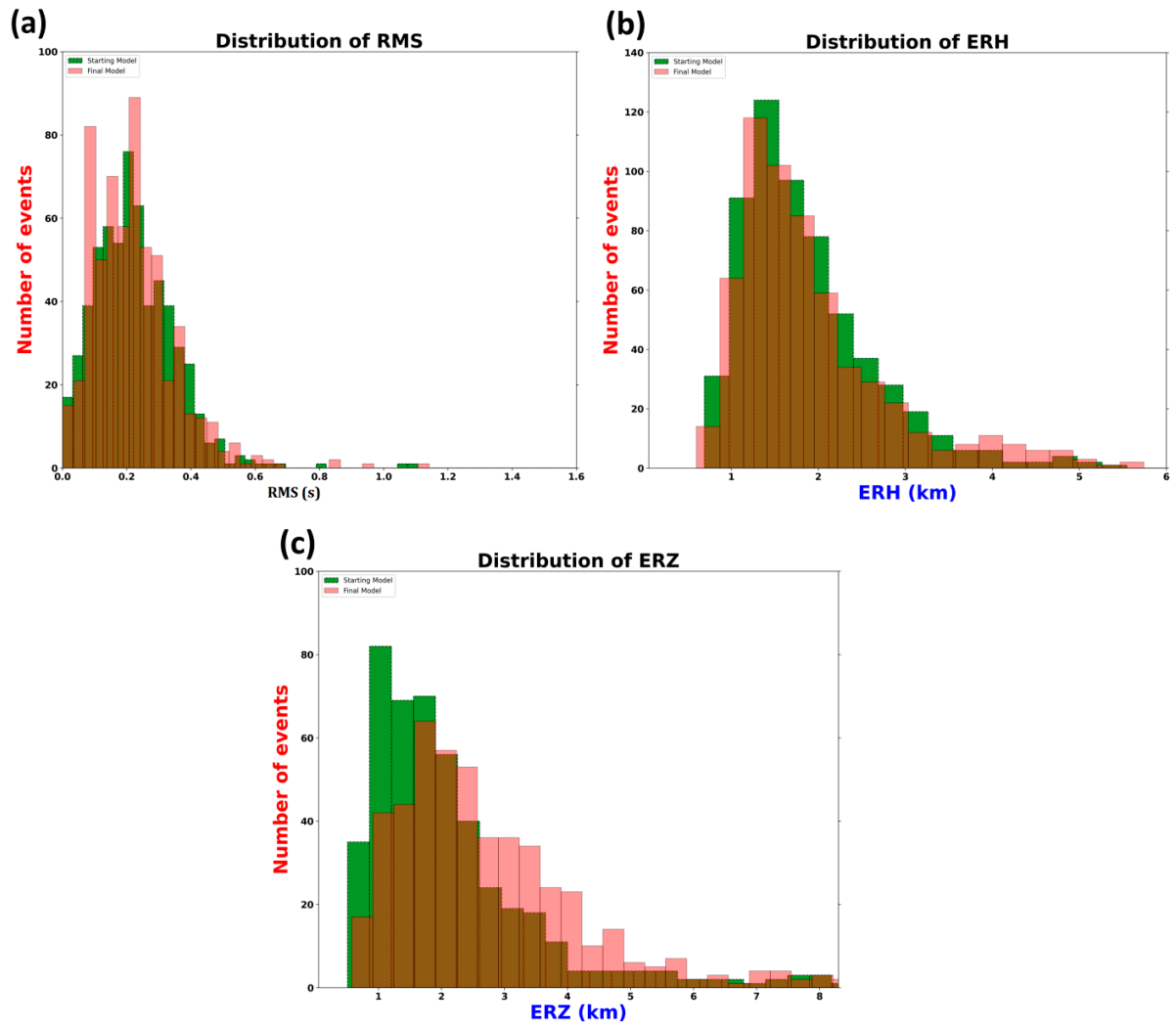


**Figure S8.** Histogram of the error statistics in region 4 between the model of [39] (green), and the final 1-D model (red) obtained in this study.

AREA 5 - ERH-ERZ of the new catalogue (local model)

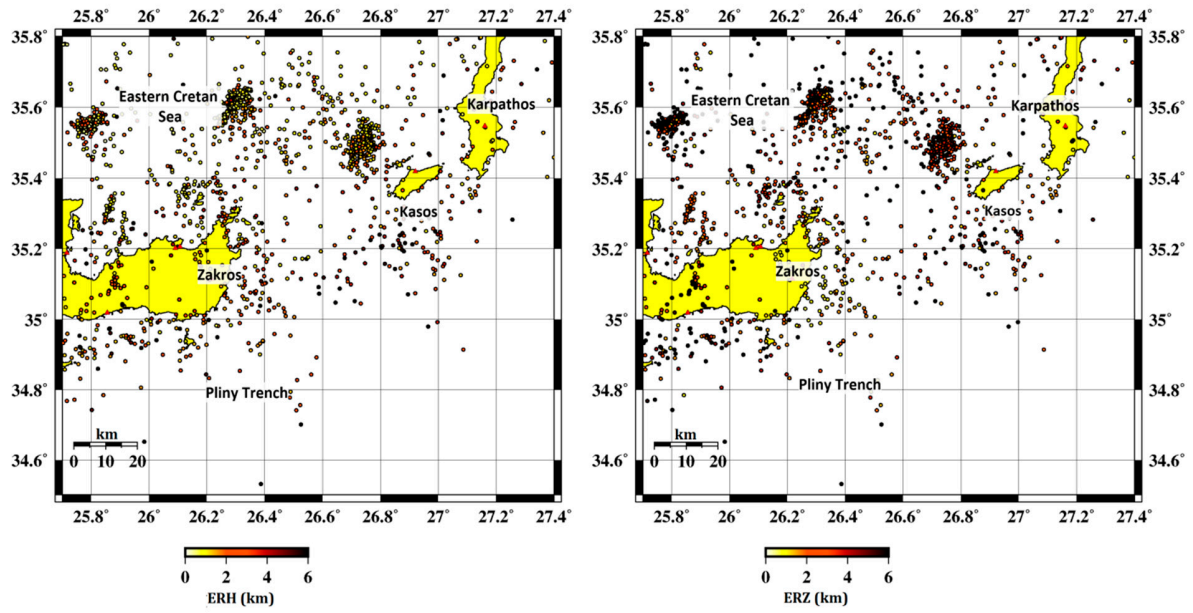


**Figure S9.** Distribution of the seismic events using the final P-S velocity model in region 5. The absolute locations are plotted as a function of horizontal uncertainty or ERH (left), and vertical uncertainty or ERZ (right).



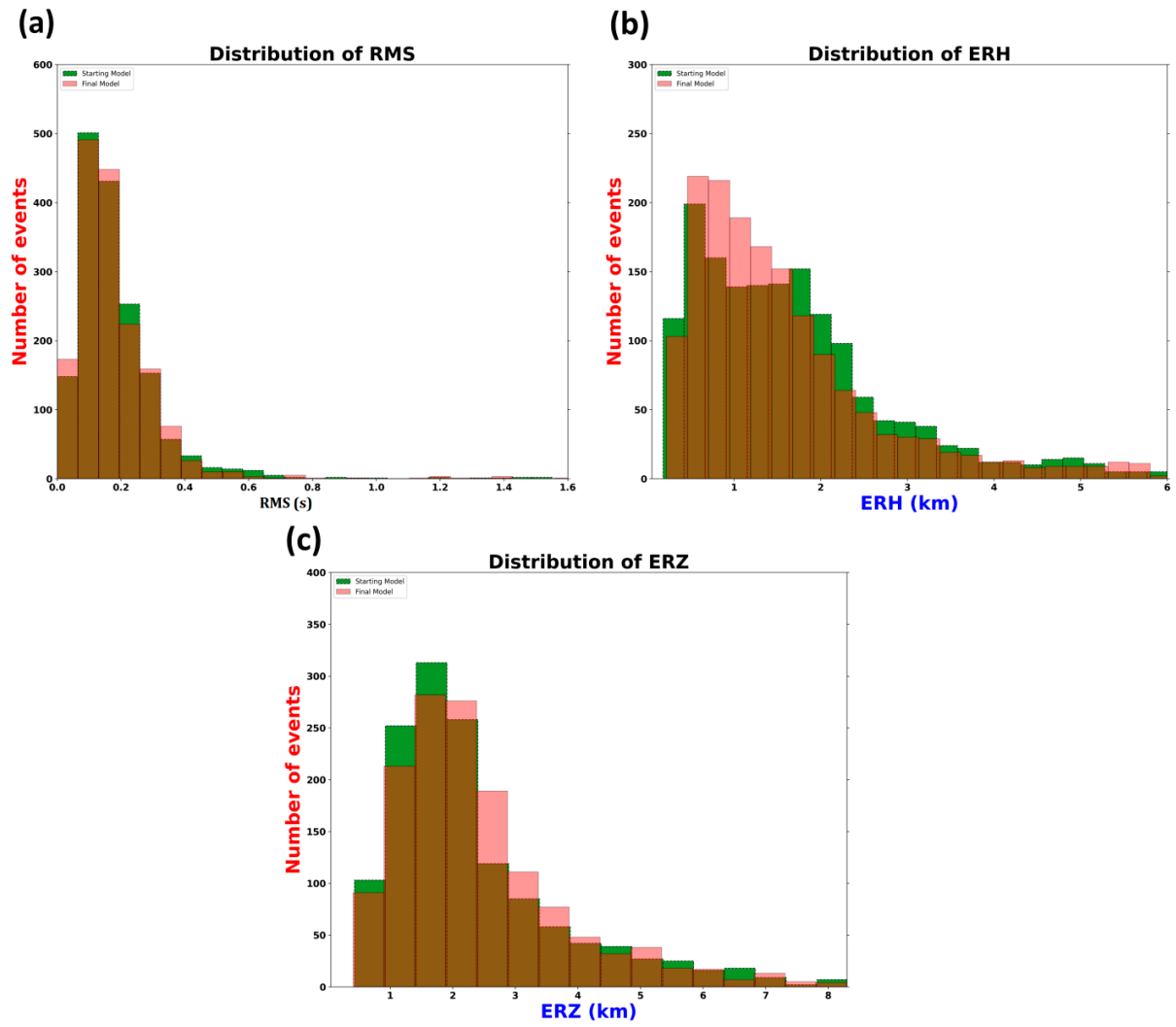
**Figure S10.** Histogram of the error statistics in region 5 between the model of [39] (green), and the final 1-D model (red) obtained in this study.

AREA 6 - ERH-ERZ of the new catalogue (local model)



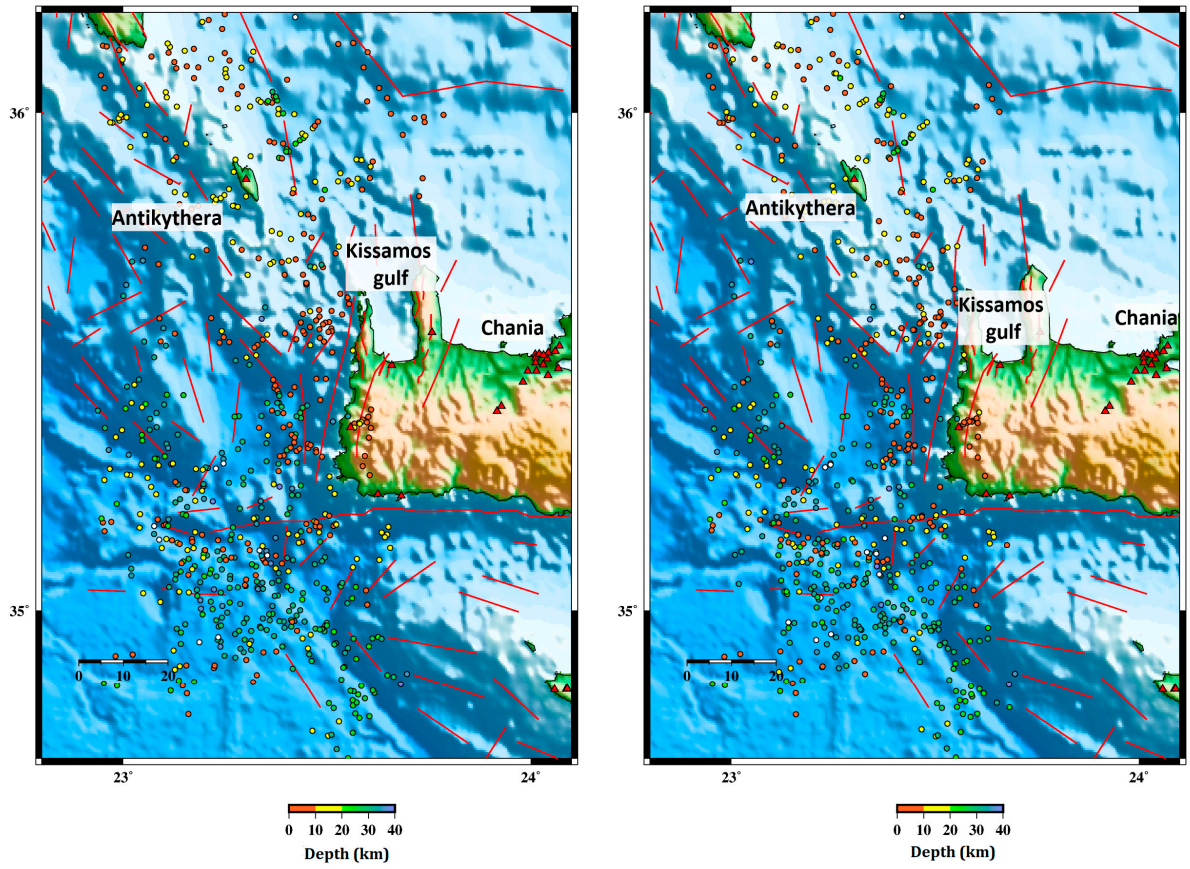
**Figure S11.** Distribution of the seismic events using the final P-S velocity model in region 6 The absolute locations are plotted as a function of horizontal uncertainty or ERH (left), and vertical uncertainty or ERZ (right).





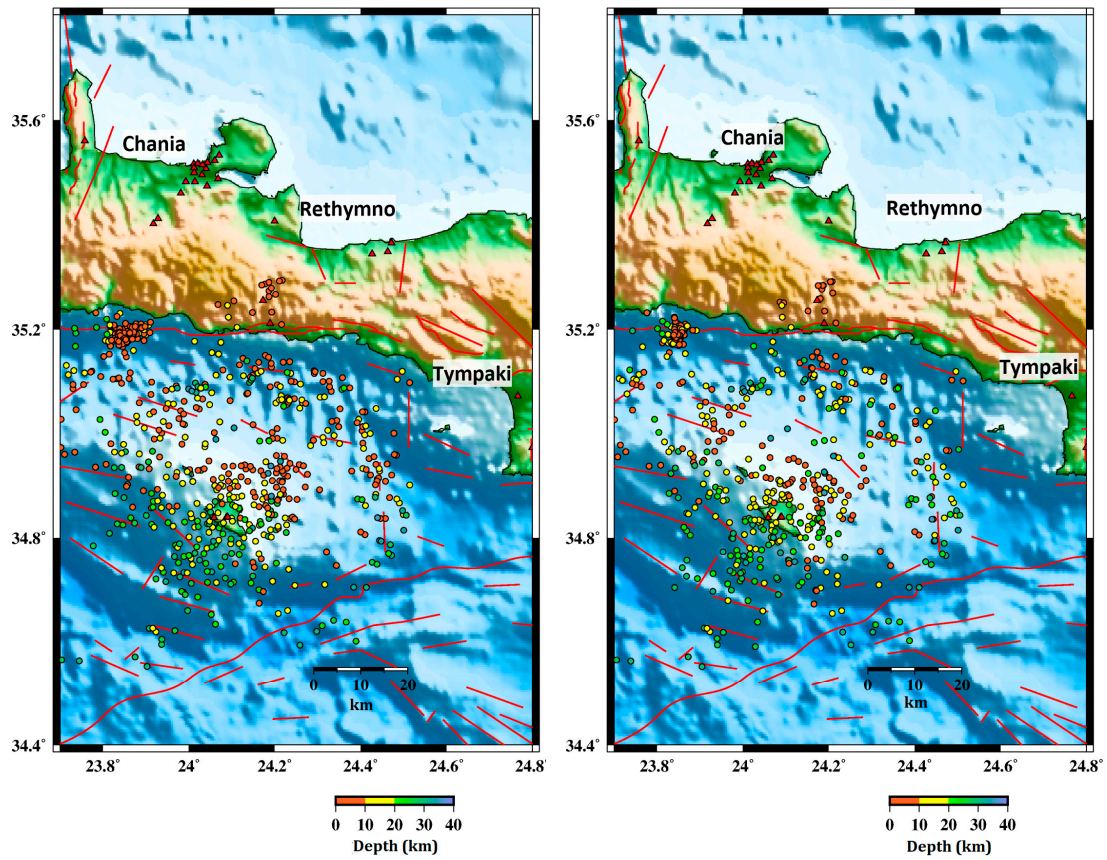
**Figure S12.** Histogram of the error statistics in region 6 between the model of [39] (green), and the final 1-D model (red) obtained in this study.

# AREA 1 - LOC (left) RELOC (right) events with hypoDD



**Figure S13.** Distribution of the located (left) and relocated events (right) that occurred between June 2018 and May 2023 in the area of Chania-Antikythera (sub-region 1). The locations of the permanent stations of HUSN are presented in red triangles.

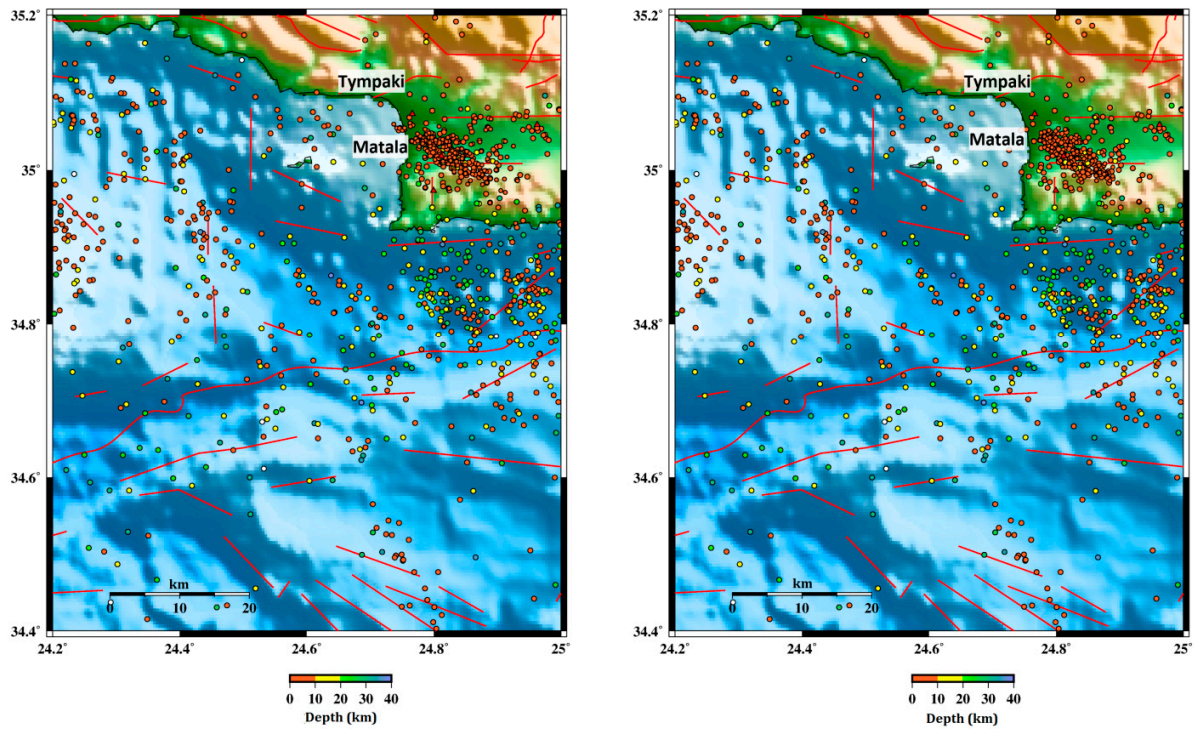
# AREA 2 - LOC (left) RELOC (right) events with hypoDD



**Figure S14.** Distribution of the located (left) and relocated events (right) that occurred between June 2018 and May 2023 in the area of Rethymno (sub-region 2). The locations of the permanent stations of HUSN are presented in red triangles.

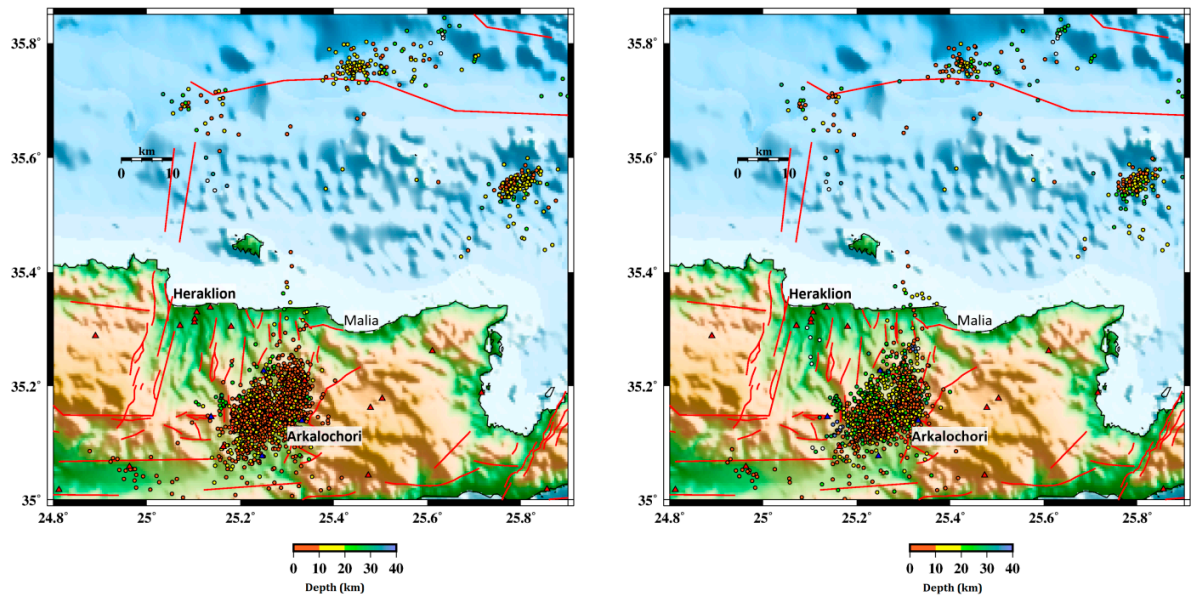


### AREA 3 - LOC (left) RELOC (right) events with hypoDD



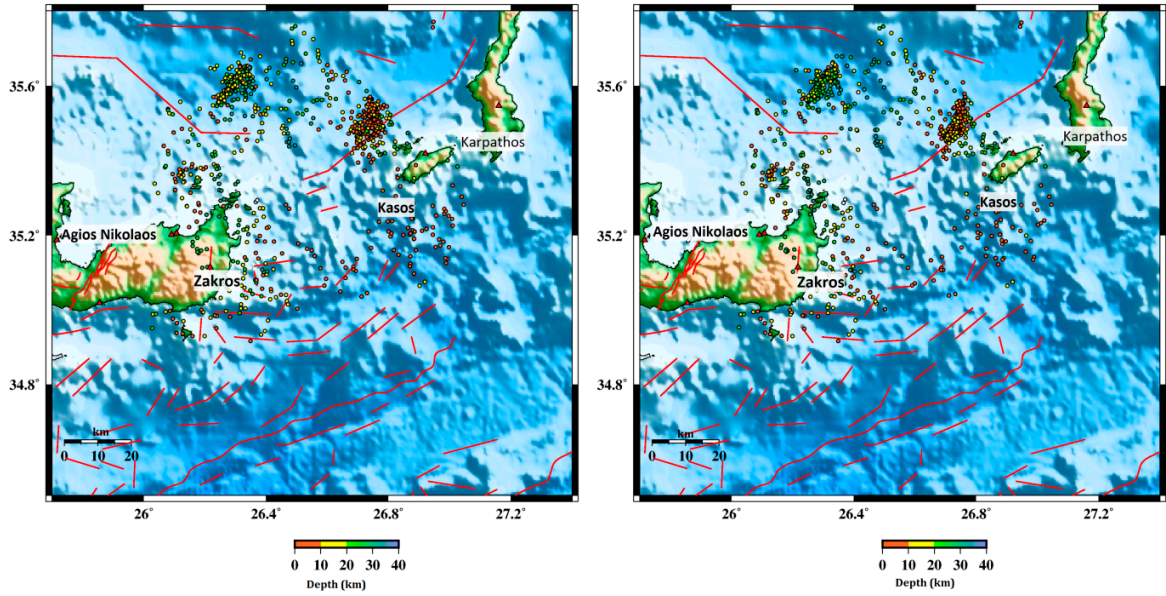
**Figure S15.** Distribution of the located (left) and relocated events (right) that occurred between June 2018 and May 2023 in the area of Matala (sub-region 3). The locations of the permanent stations of HUSN are presented in red triangles.

### AREA 4- LOC (left) RELOC (right) events with hypoDD



**Figure S16.** Distribution of the located (left) and relocated events (right) that occurred between June 2018 and May 2023 in the area of Heraklion, Central Crete (sub-region 4). The locations of the permanent stations of HUSN are presented in red triangles while the temporary ones in blue.

AREA 6 LOC (left) RELOC (right) events with hypoDD



**Figure S17.** Distribution of the located (left) and relocated events (right) that occurred between June 2018 and May 2023 in the area of Zakros-Karpathos (sub-region 6). The locations of the permanent stations of HUSN are presented in red triangles.