

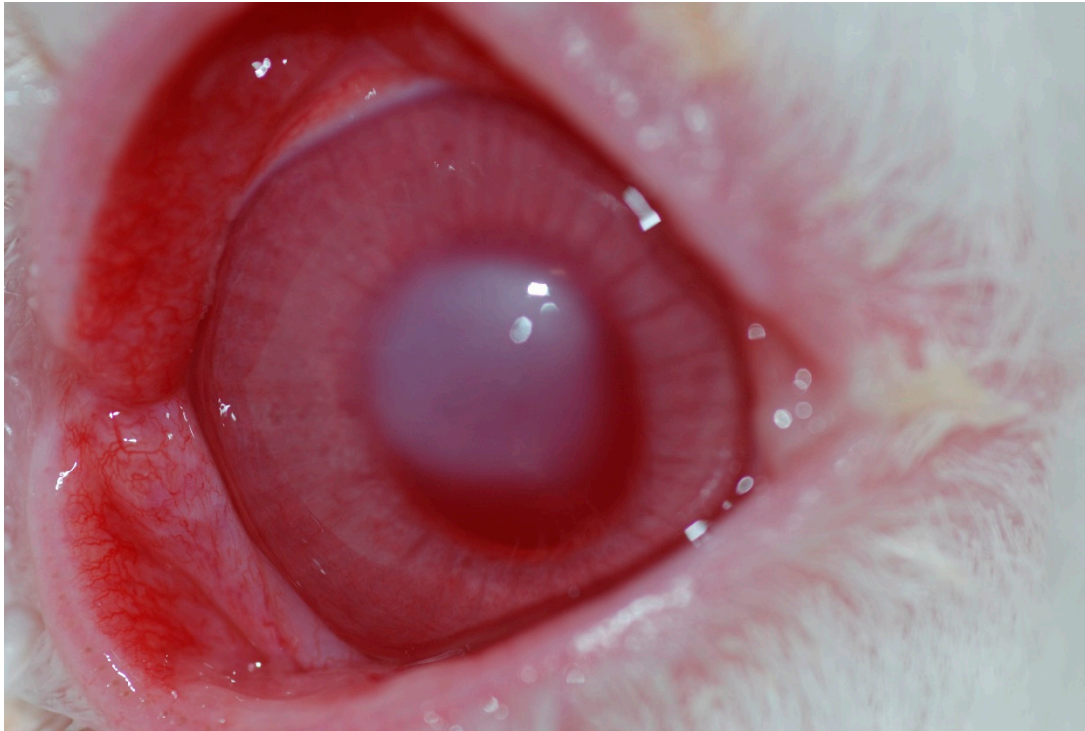
SUPPLEMENTARY MATERIAL 3.

Deep denaturation (NaOH)

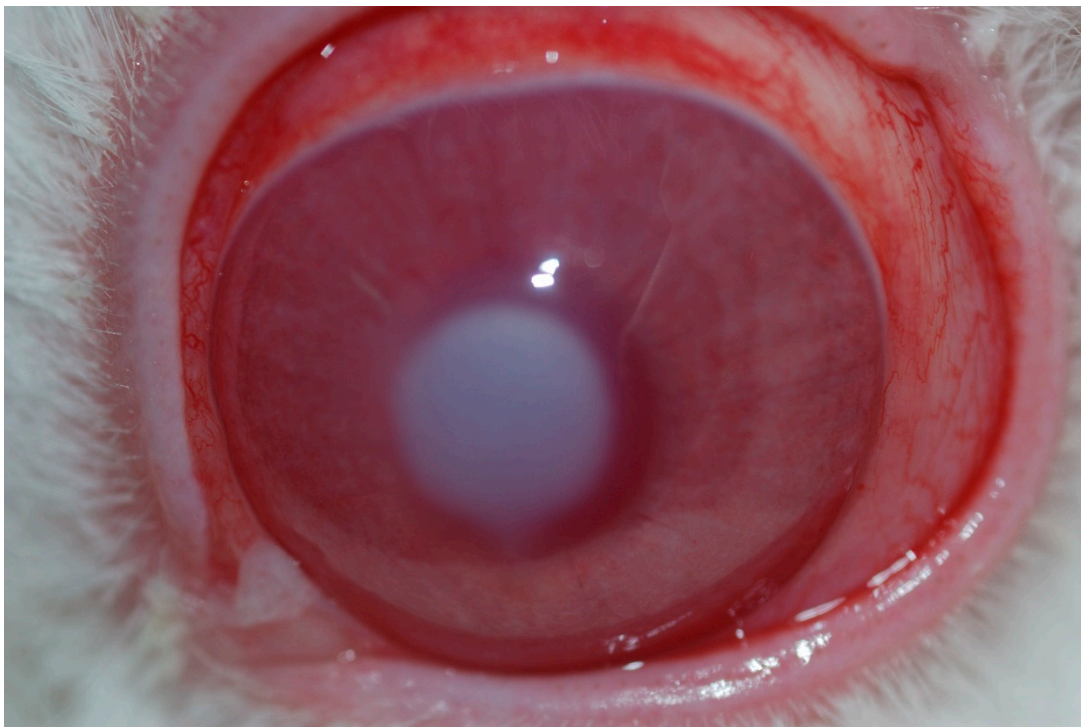
RE – right eye (ASC + vehiculum)

LE – left eye (vehiculum)

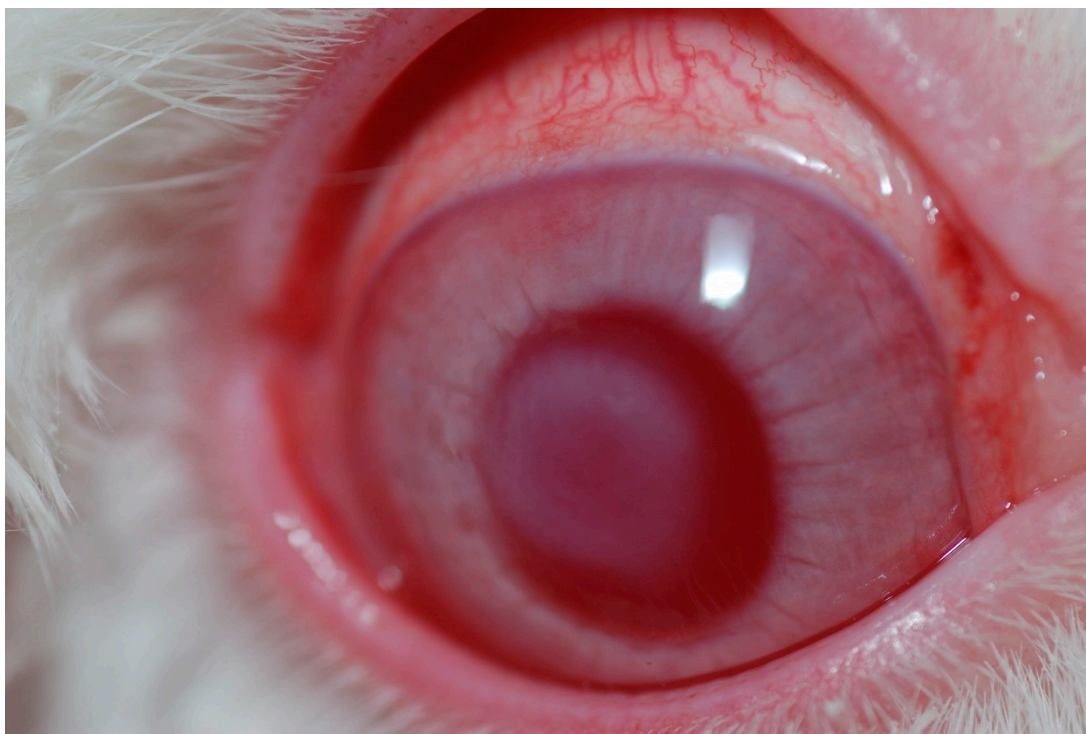
RE, 1 week



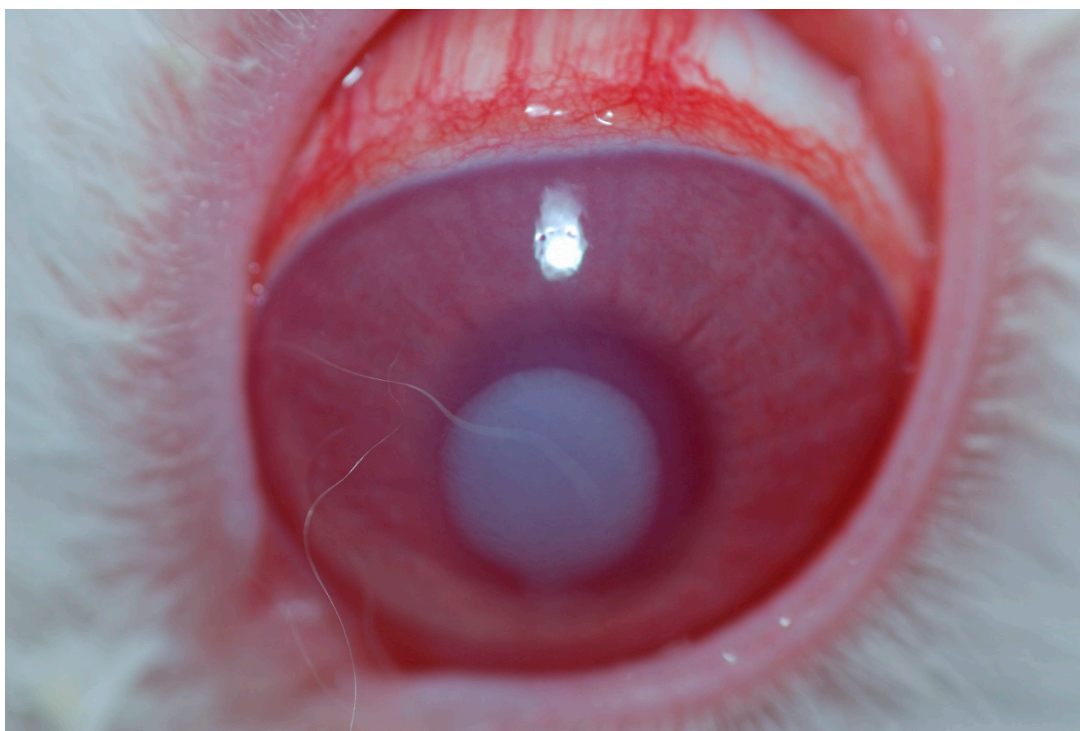
LE, 1 week



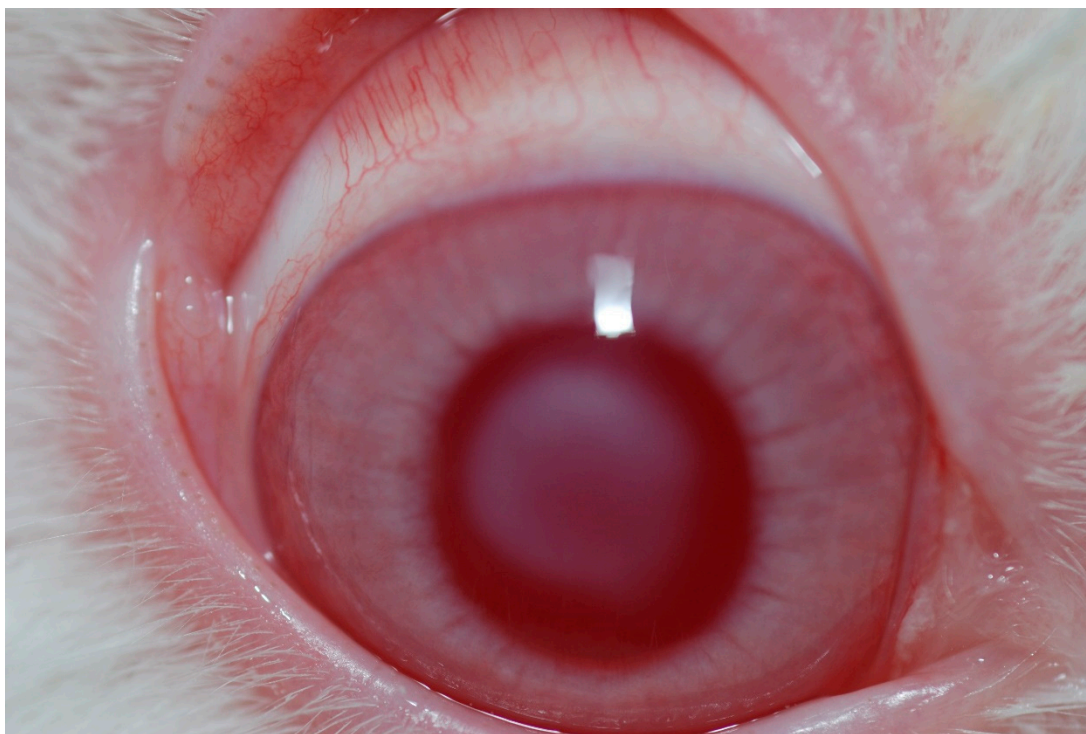
RE, 2 week



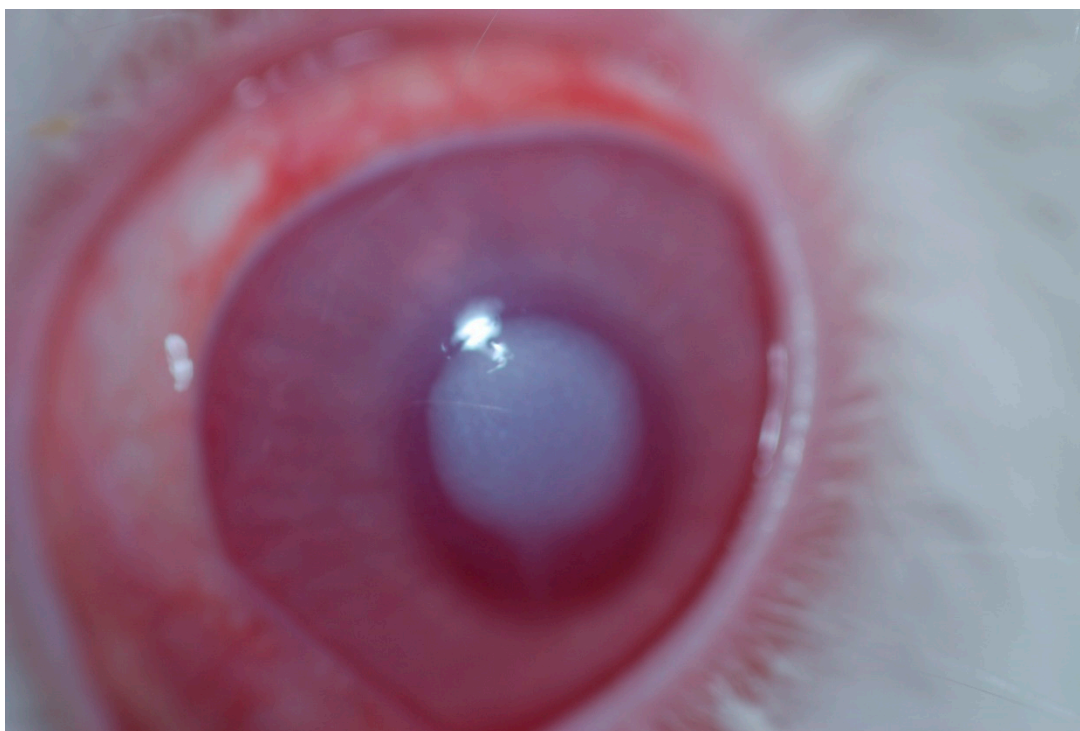
LE, 2 week



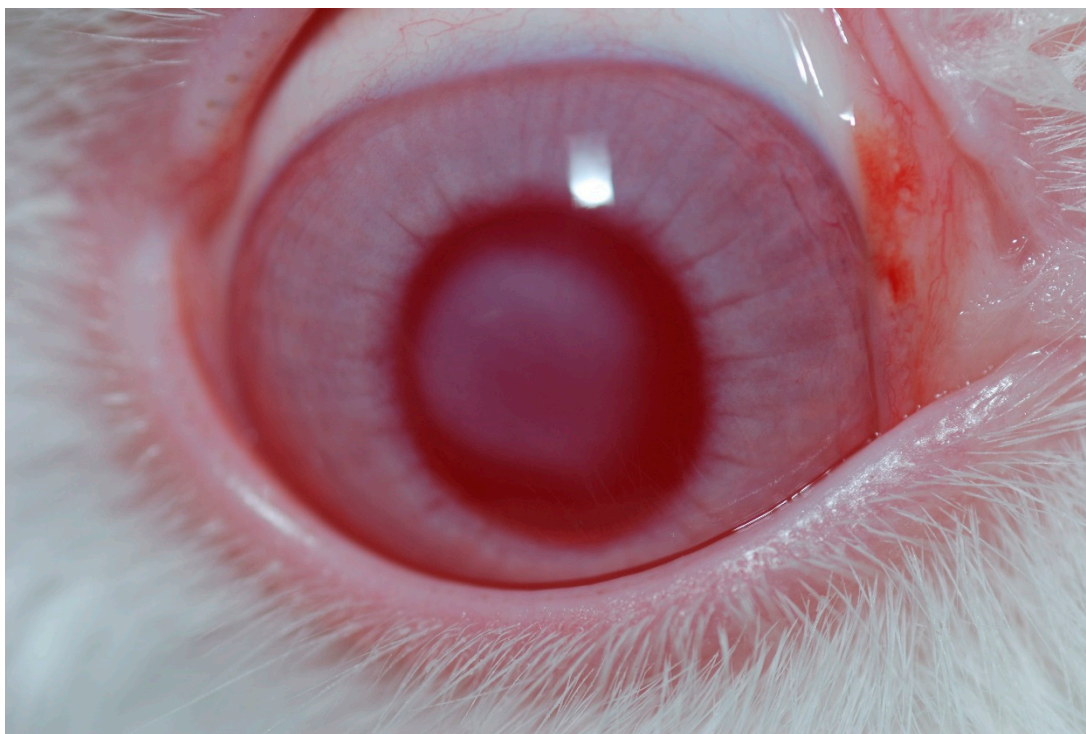
RE, 3 week



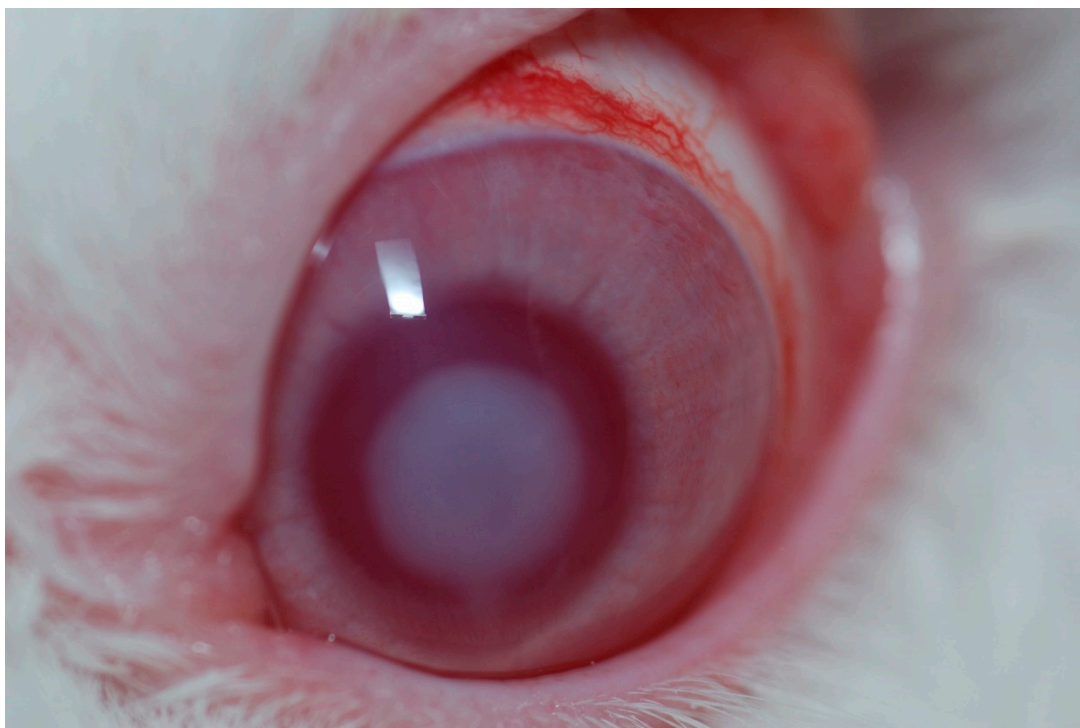
LE, 3 week



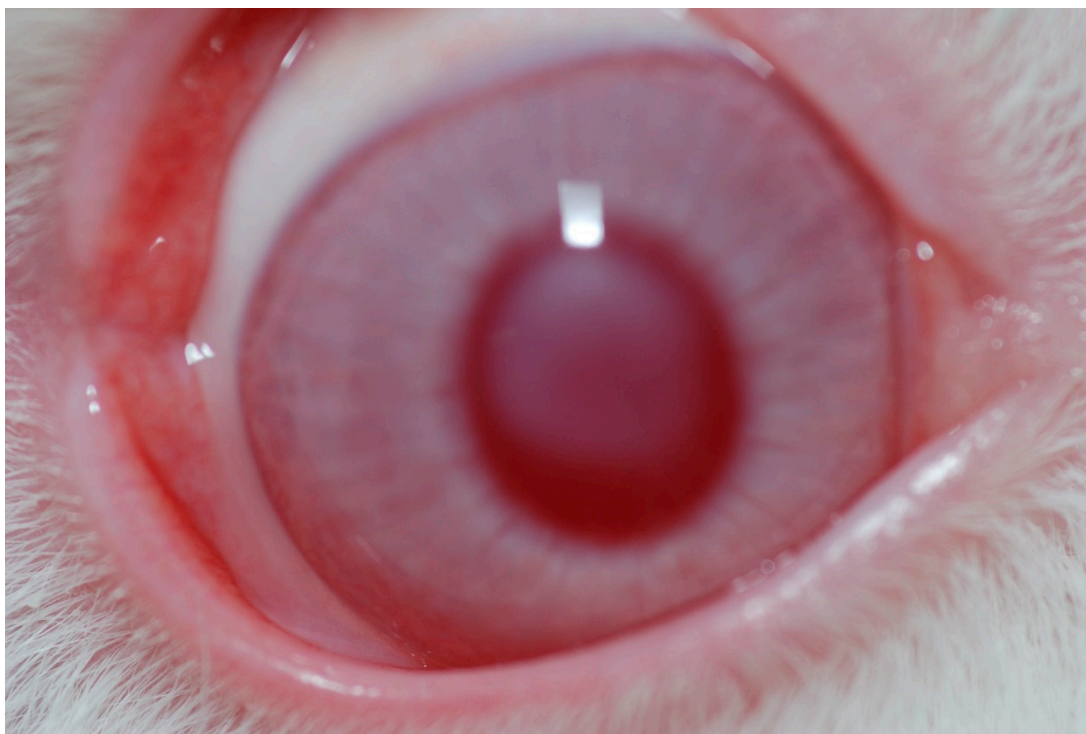
RE, 4 week



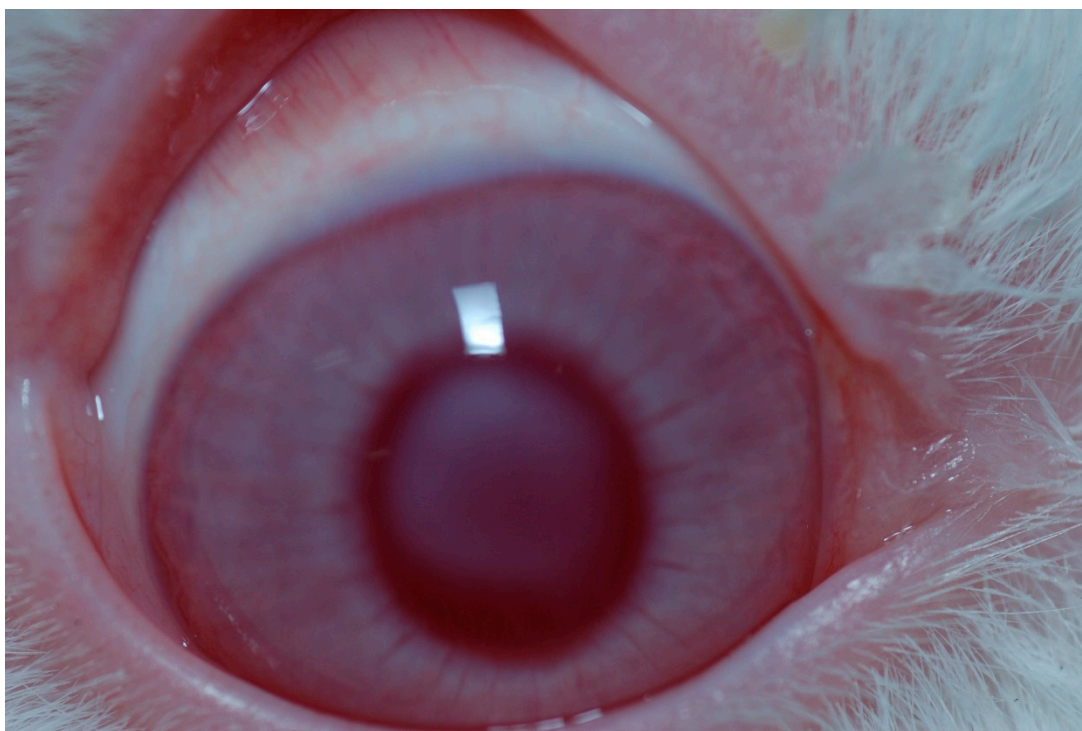
LE, 4 week



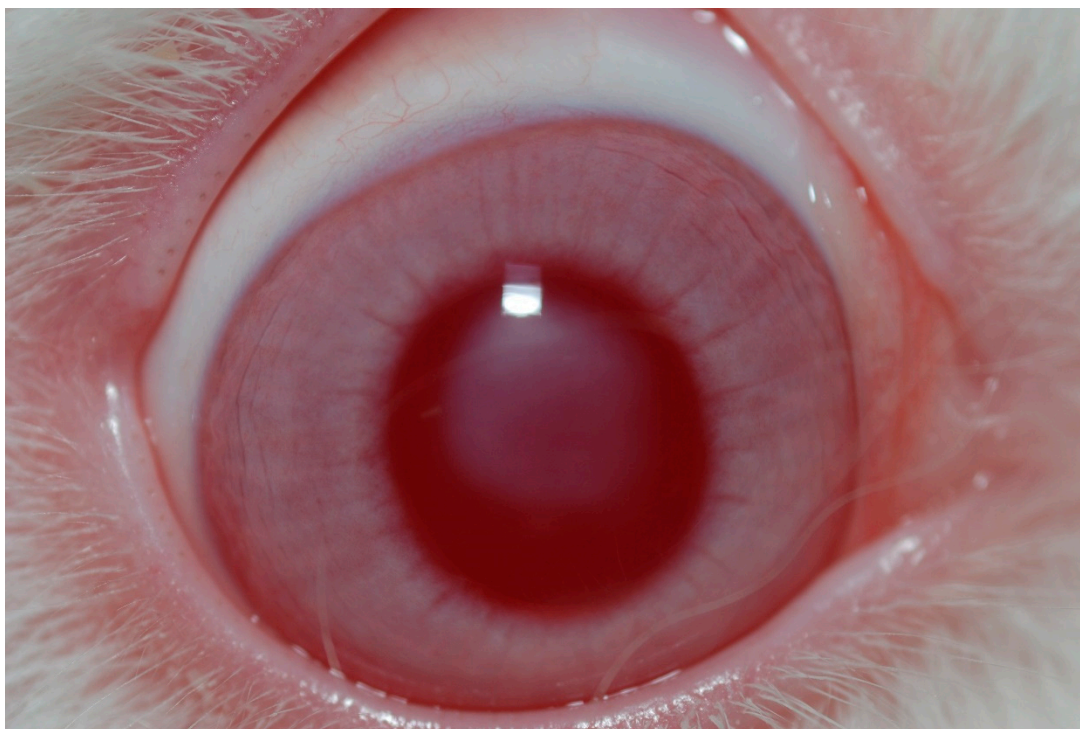
RE, 5 week



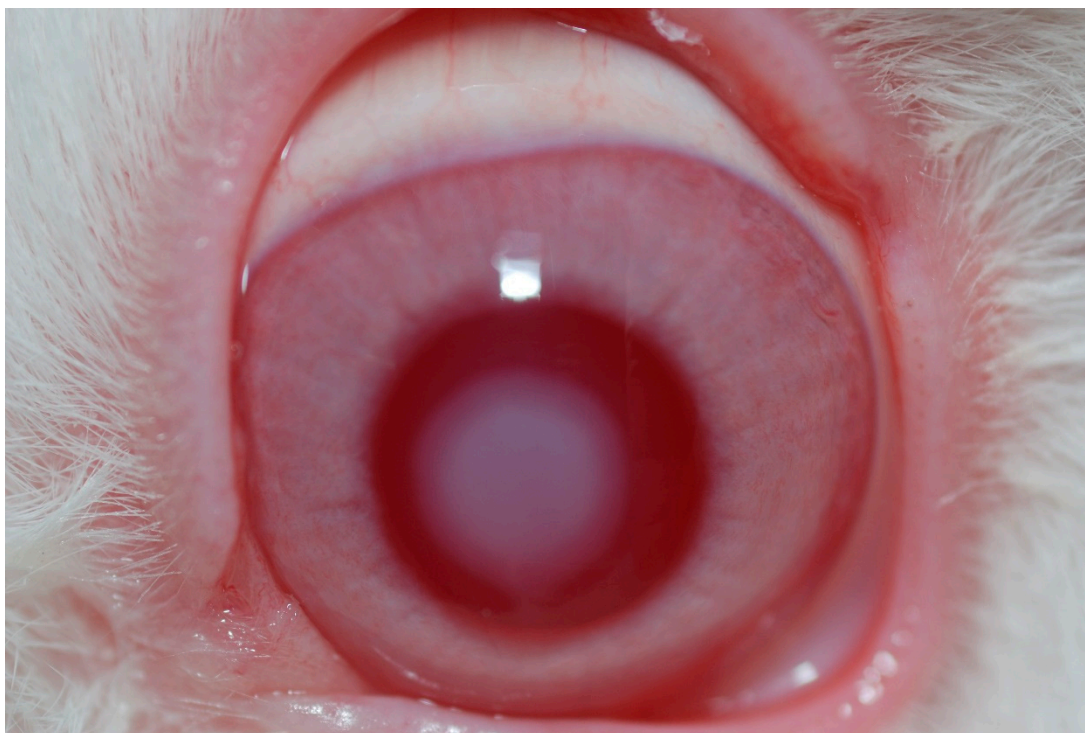
LE, 5 week



RE, 6 week



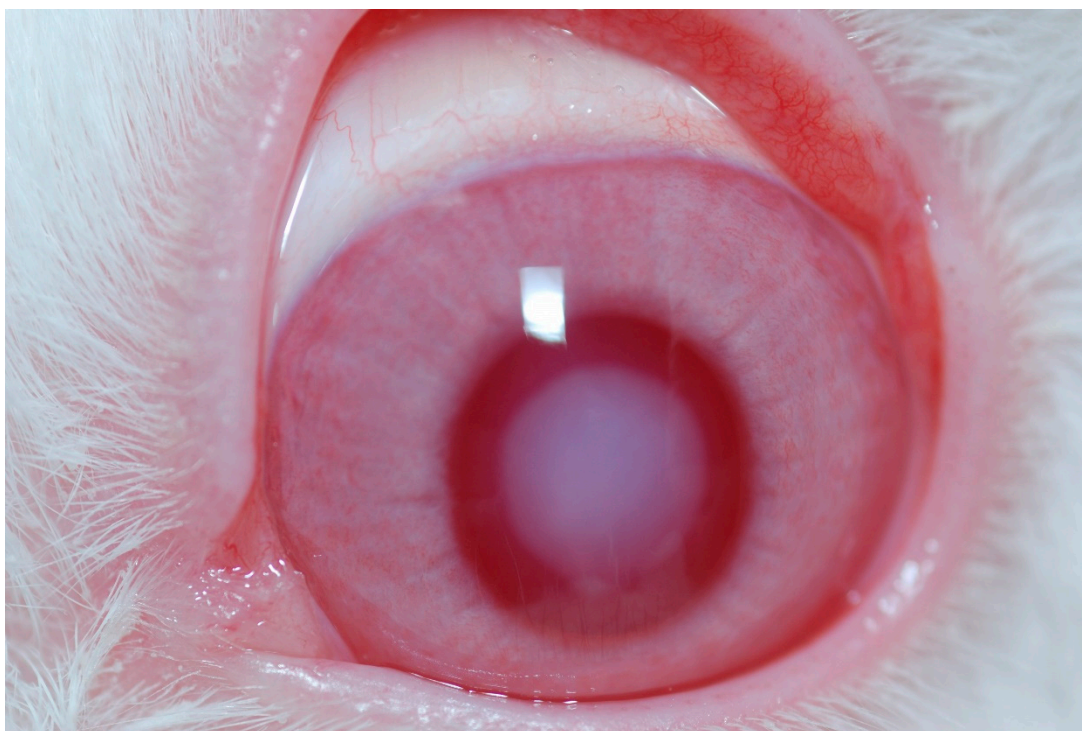
LE, 6 week



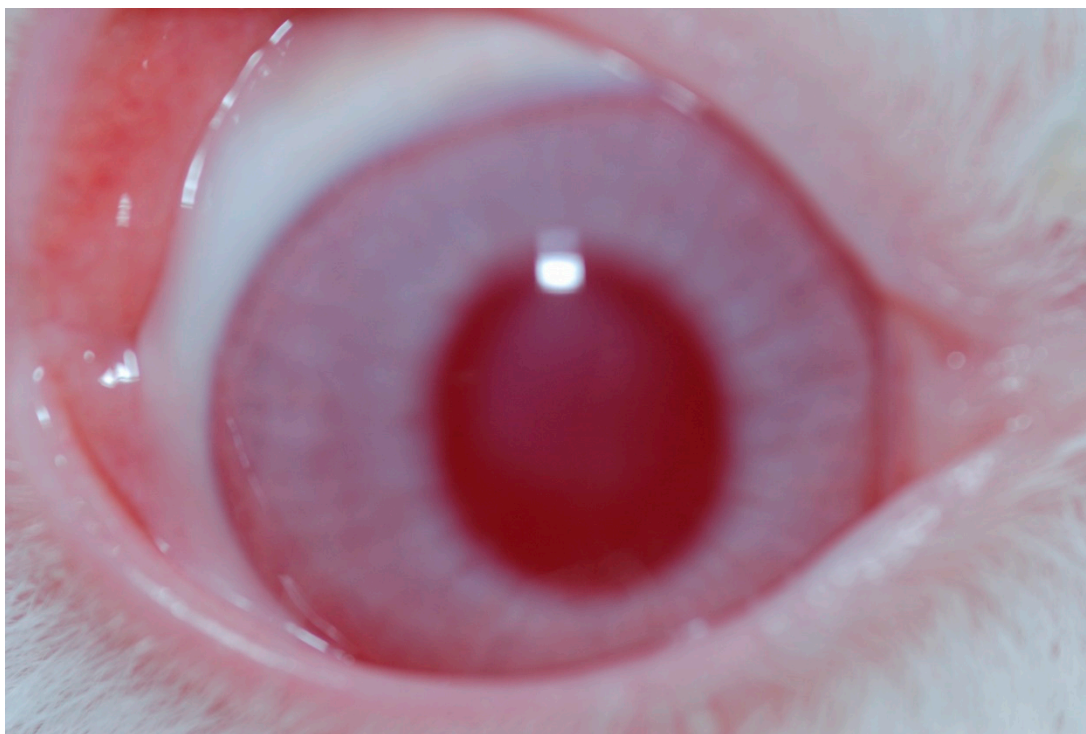
RE, 7 week



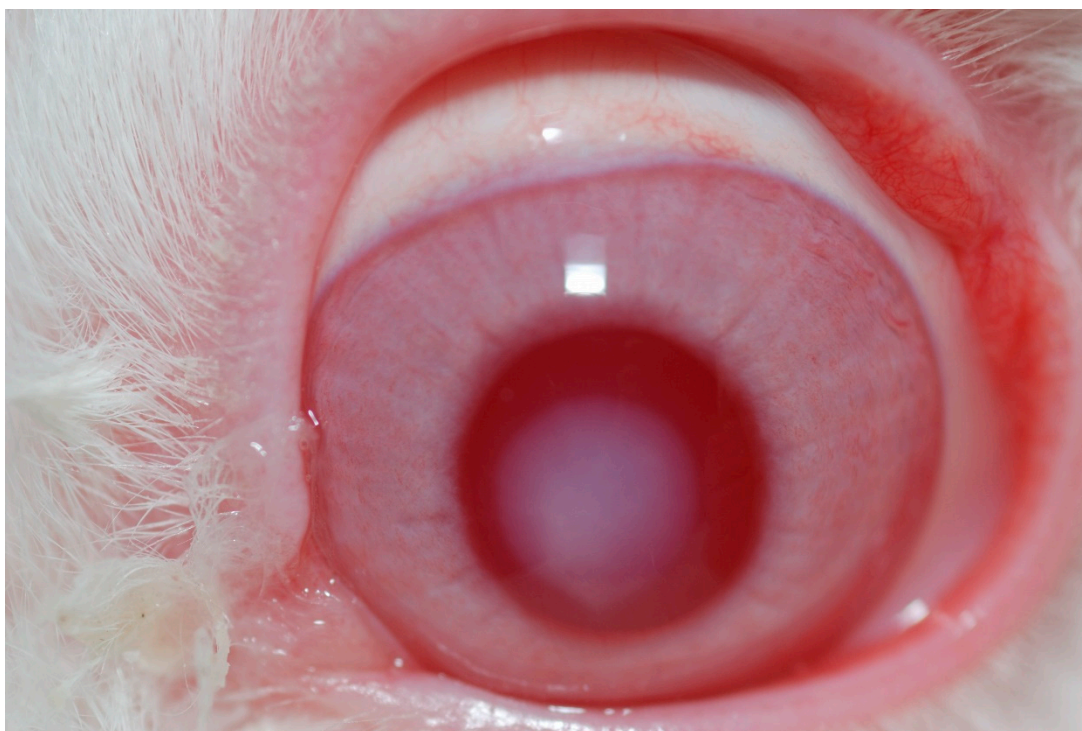
LE, 7 week



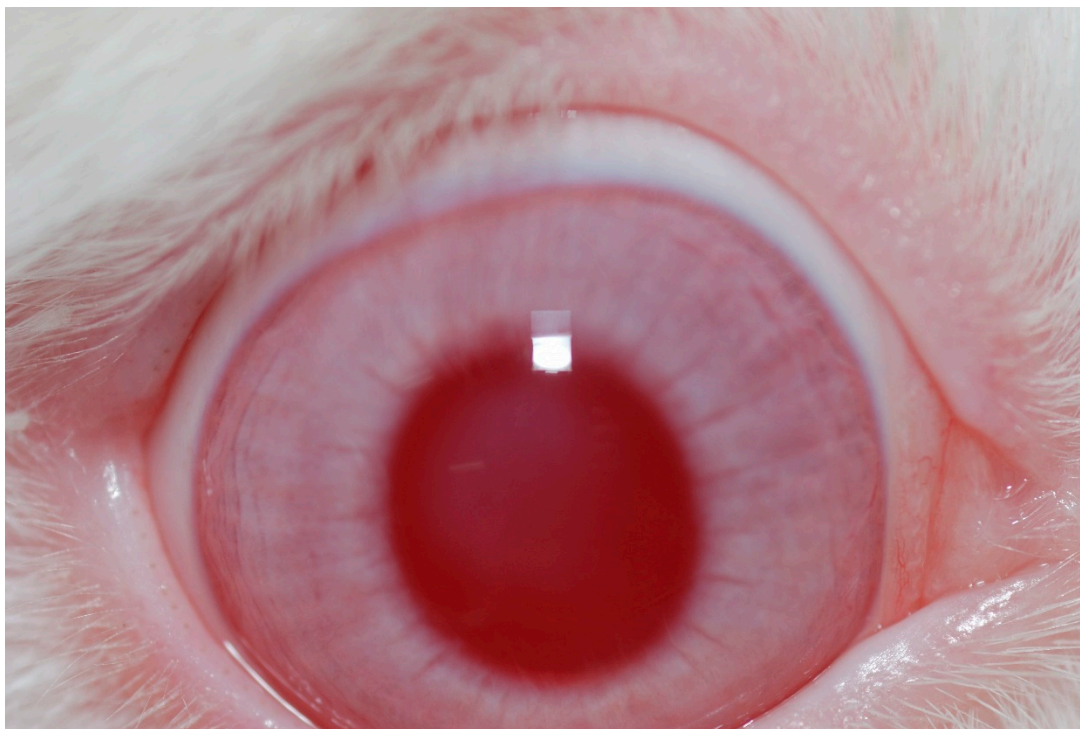
RE, 8 week



LE, 8 week



RE, 9 week



LE, 9 week

