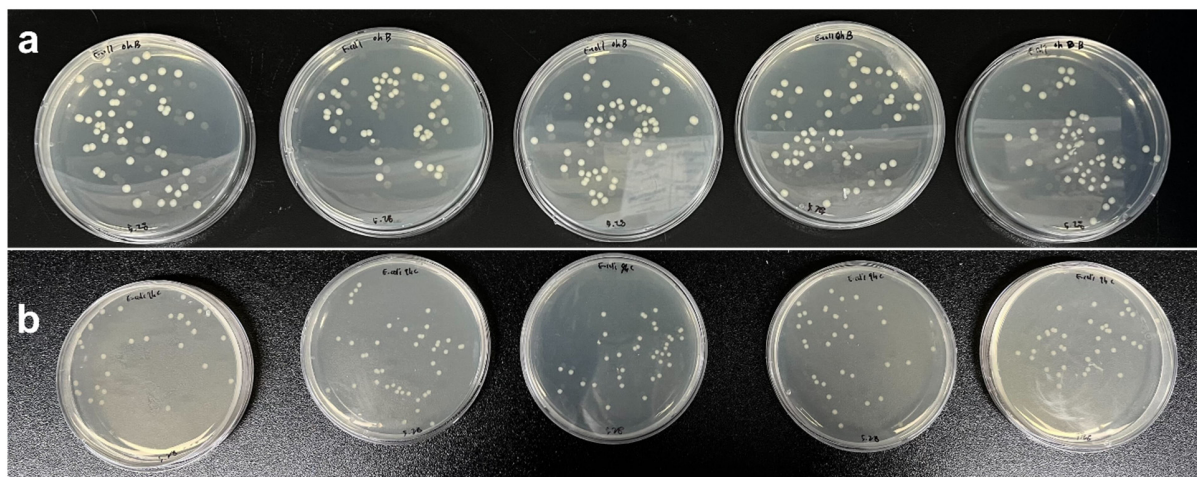


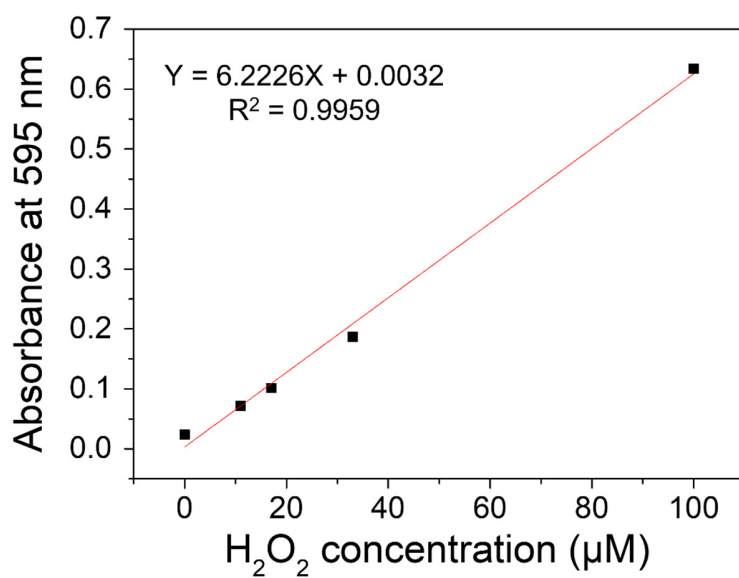
# Repetitive Bacterial Disinfection of Respirators by Polydopamine Coating

	Composition (at. %)	
	Bare PP	PP-PDA1
C-C / C=C	98.7	38.1
C-O / C-N	1.3	30.1
C=O	-	16
-COOH	-	15.9

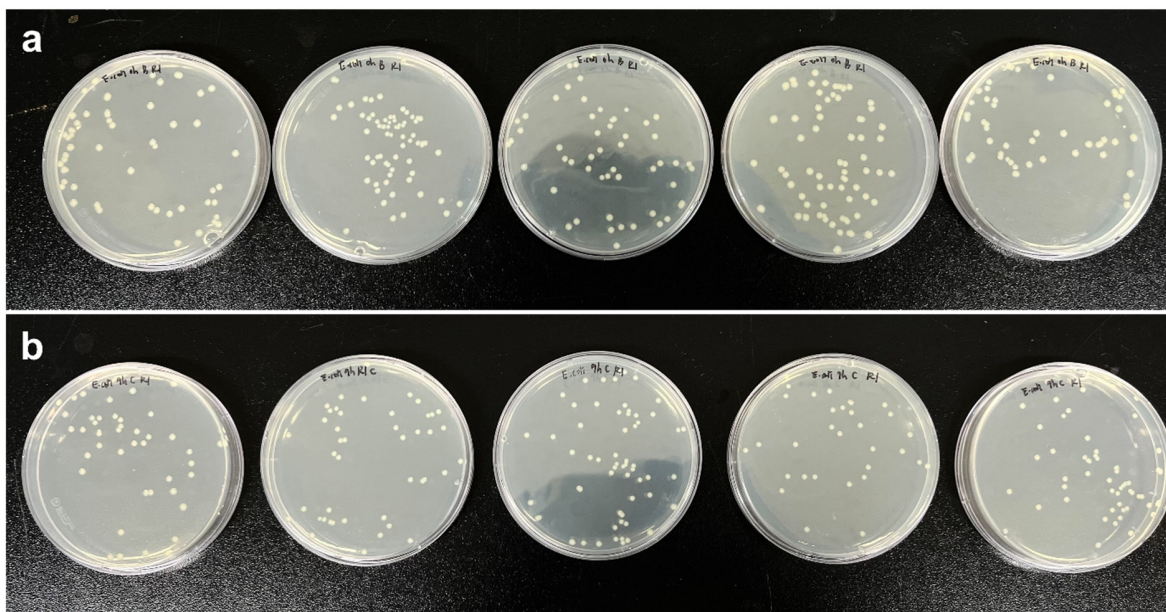
**Table S1.** Atomic percentages of each functional group in bare polypropylene and polydopamine-coated polypropylene.



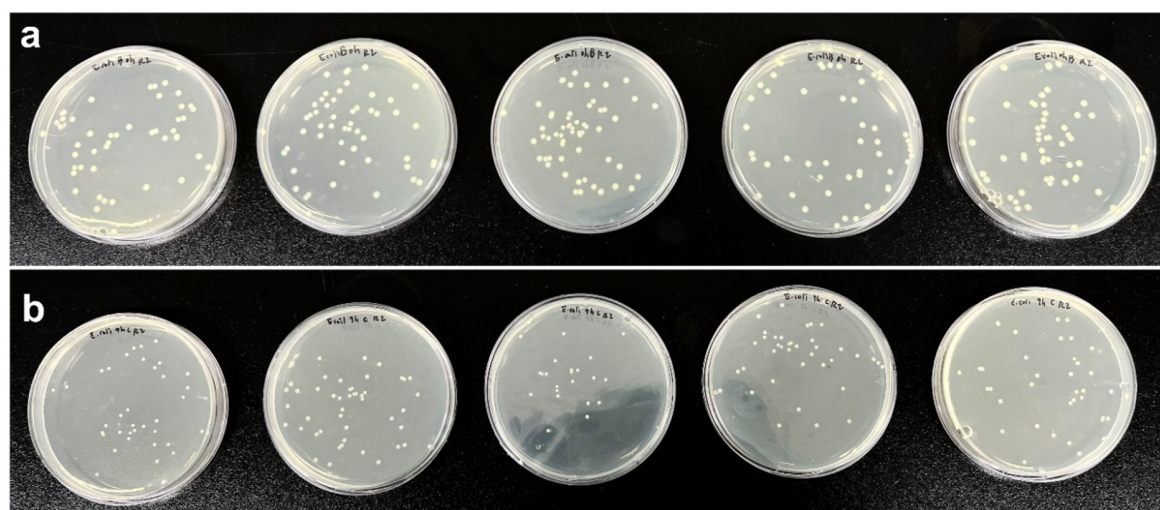
**Figure S1.** Representative images of plates used for counting *E.coli* colonies: a) control (bare polypropylene) and b) polydopamine-coated polypropylene after 9 h of incubation.



**Figure S2.** Standard curve used to quantify the amount of H<sub>2</sub>O<sub>2</sub> produced from polydopamine-coated polypropylene.



**Figure S3.** Representative images of plates used for counting *E.coli* colonies: a) control (bare polypropylene) and b) polydopamine-coated polypropylene (number of coating cycles = 2, PP-PDA2).



**Figure S4.** Representative images of plates used for counting of *E.coli* colonies: a) control (bare polypropylene) and b) polydopamine-coated polypropylene (number of coating cycles = 3, PP-PDA3).