

Figure S1. (a) Low-magnification bright-field transmission electron microscope (TEM) image of a ZnO NW with an inset for the corresponding SAED pattern. (b) High-resolution TEM image of a ZnO NW.

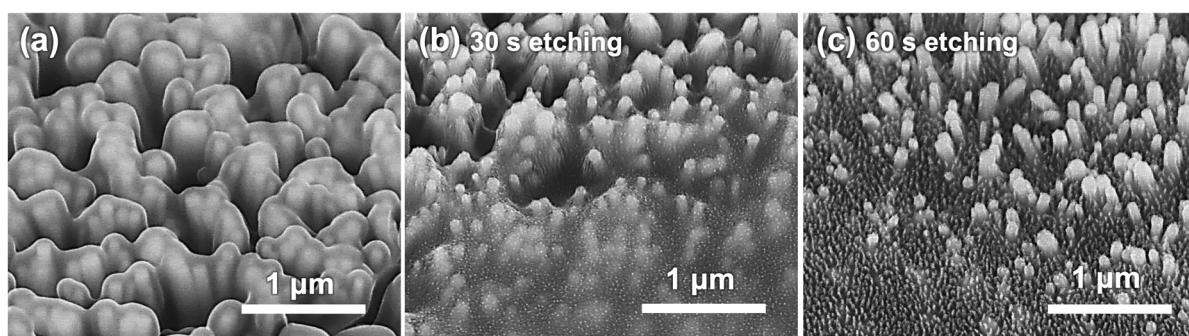


Figure S2. Field emission scanning electron microscope (FESEM) images of (a) ZnO nanowires (NWs) coated by AZ1512, and exposed tips of ZnO NWs after RIE etching for (b) 30 s and (c) 60 s, respectively.