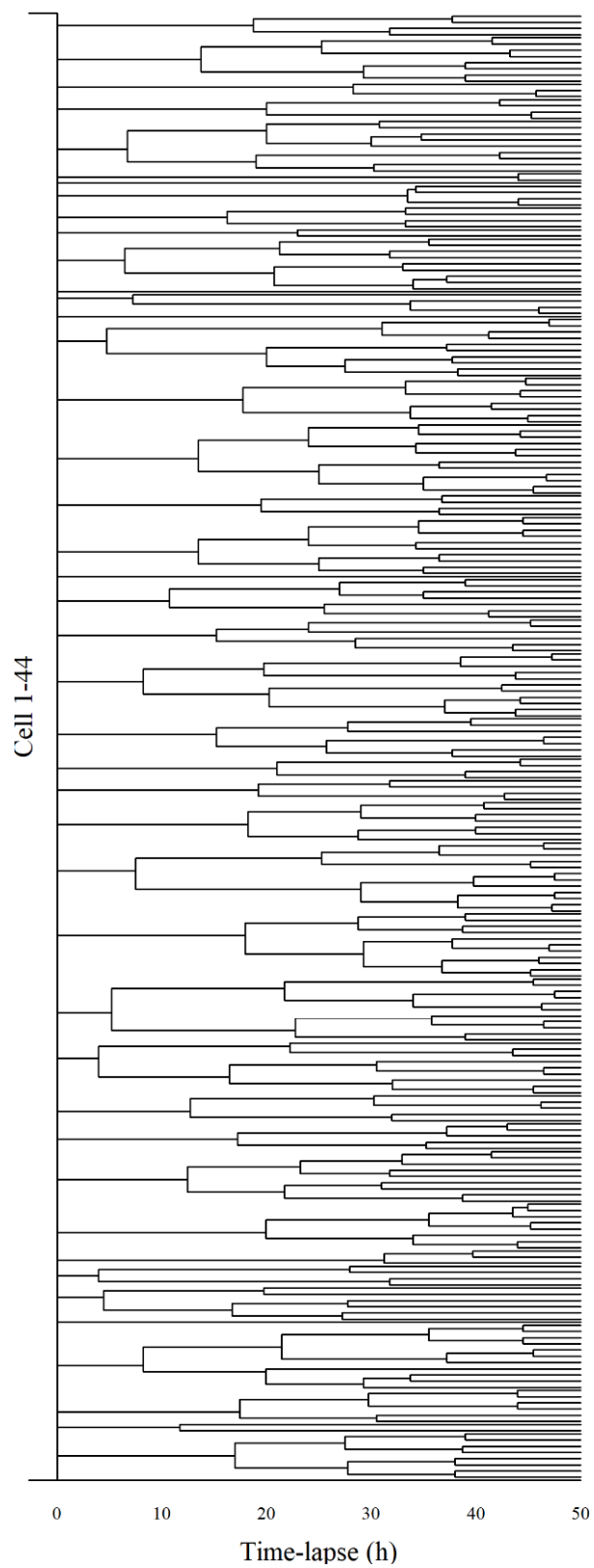
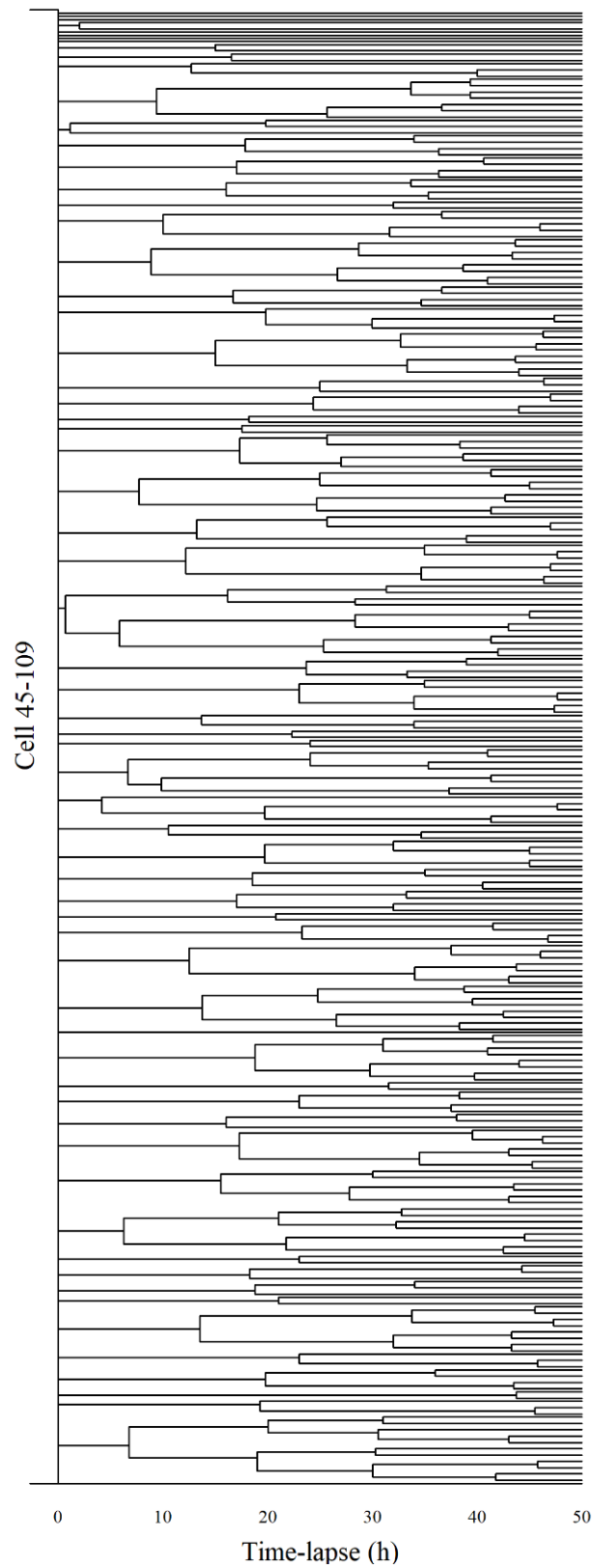


a

Control



Control



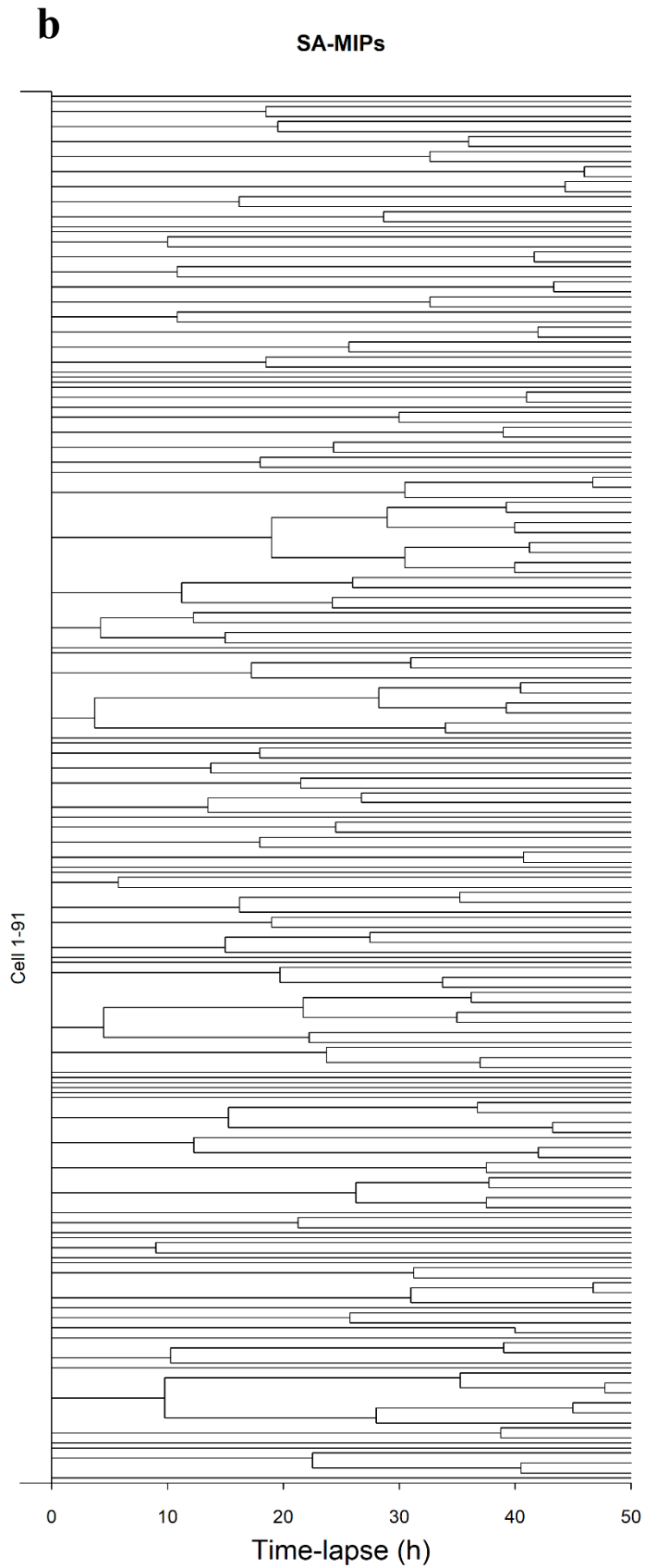


Figure S2. All cell family trees of tracked cells. Cell family trees of RAW 264.7 cells tracked through time-lapses of digital holographic cytometry. Images were acquired every 15 min for 48 h. (a) RAW 264.7 cells were incubated with culture medium only or (b) with 40 µg/ml SA-MIP added

immediately before the start of the timelapse . For every capture position, cells in the first image (0 h) were selected and tracked until division. In the cell family trees, each forking of the line indicates a cell division. The resulting daughter cells of each cell division were identified, and tracking continued throughout the 48 h time-lapse. In total 109 control cell family trees and 91 SA-MIPs treated cell family trees were analyzed.