

Supplementary material

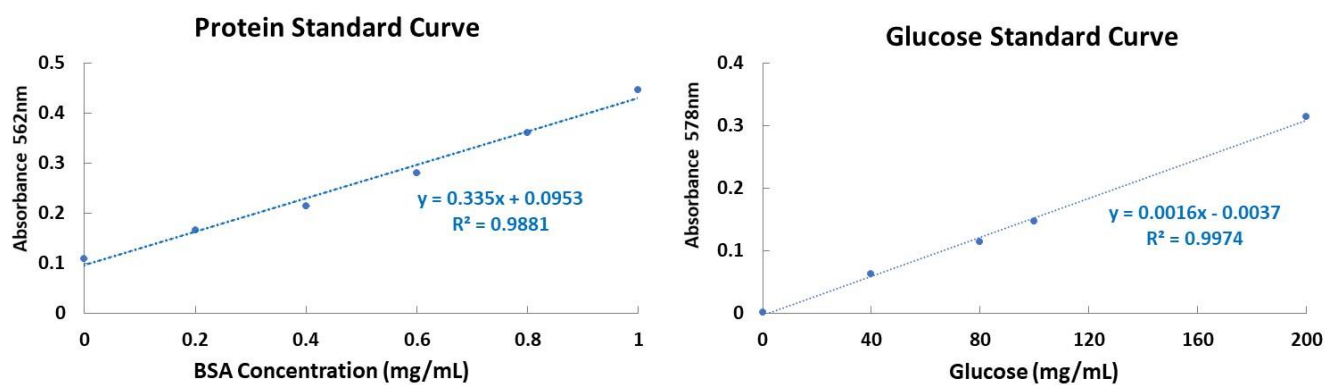


Figure S1: Protein and glucose standard curves for total protein and carbohydrate analyses

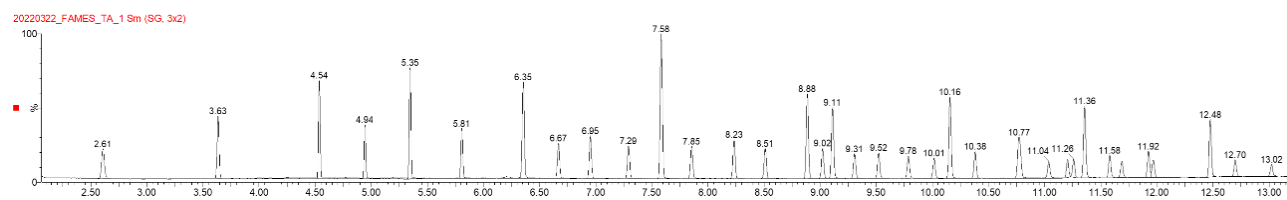


Figure S2: Representative GC-ToF-MS chromatogram of 37 FAME Mix (C8-C24) standard.

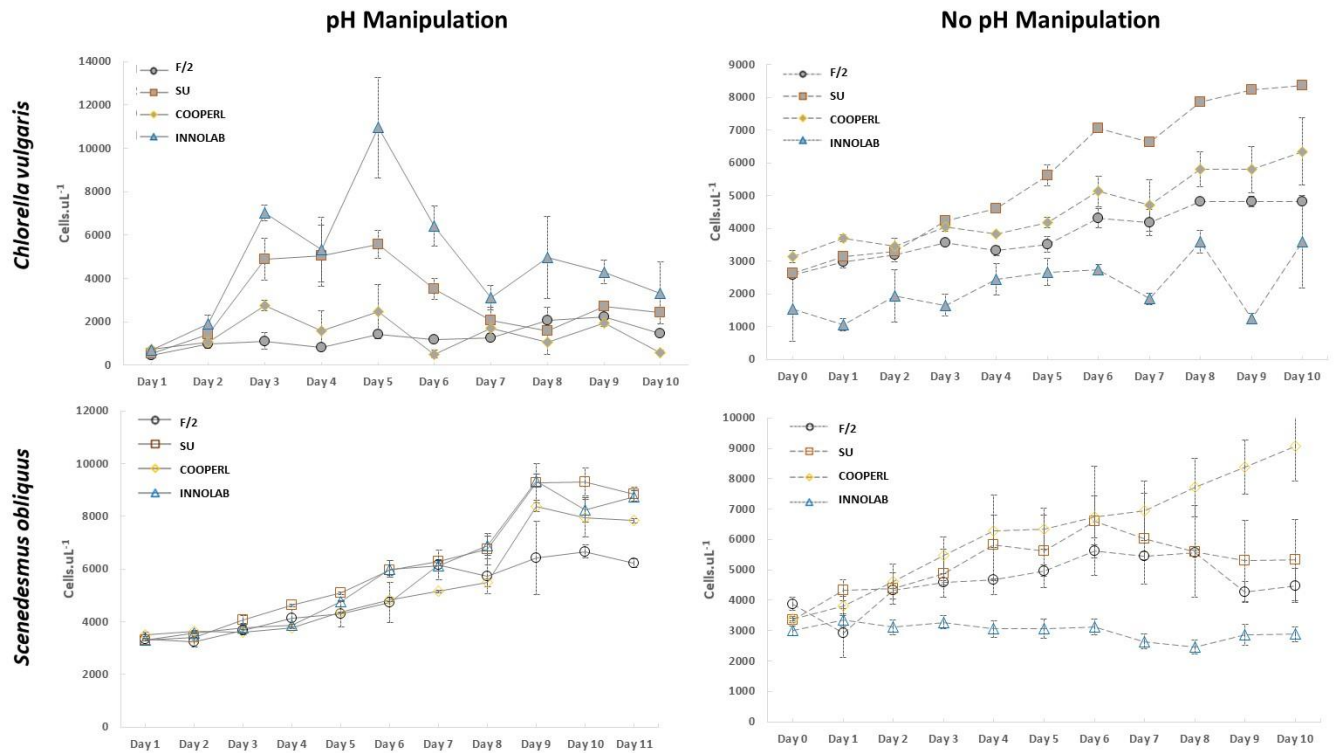


Figure S3: cell count per µL for *C. vulgaris* and *S. obliquus* grown on three different digestates under pH manipulation and no pH manipulation for 10 days of the experiment. Error bars represent the standard deviation on three replicates.

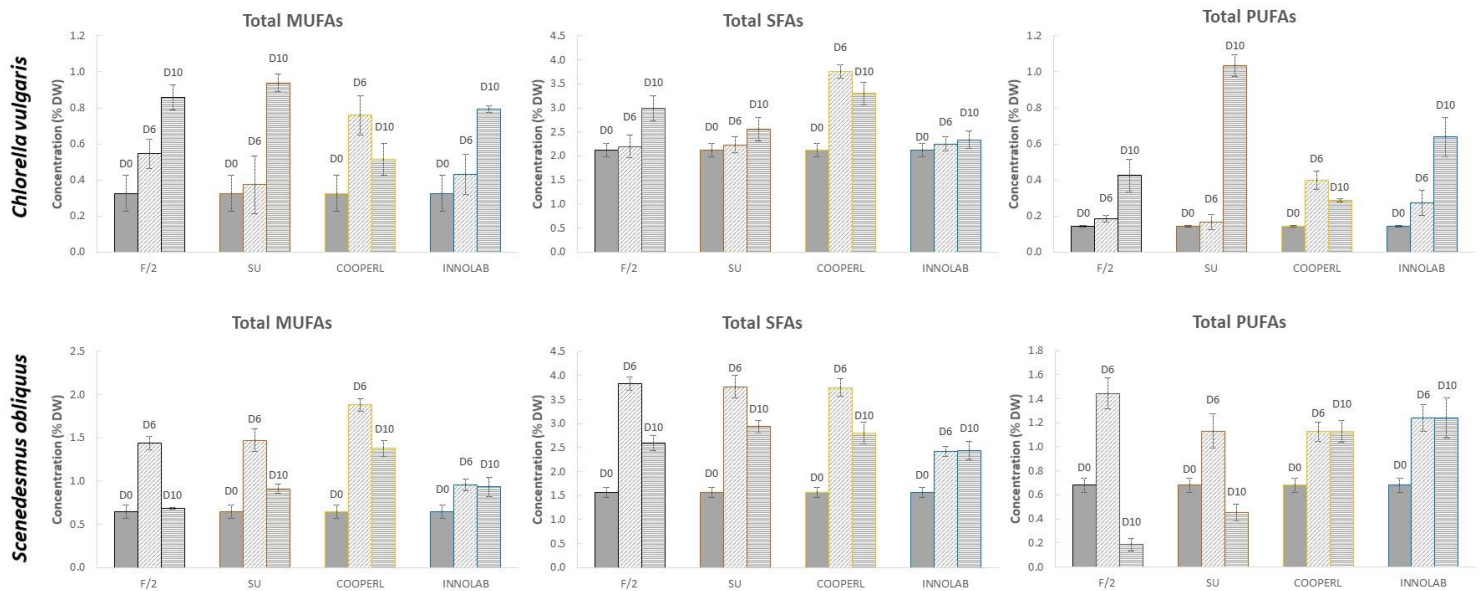


Figure S4: Total MUFAs, SFAs and PUFAs in cultures of *C. vulgaris* and *S. obliquus* grown on three different digestates under pH manipulation on day 0, 6 and 10 of the experiment. Error bars represent the standard deviation on three replicates.