

Fig. S1 Chemical formula of the antibiotic Cefixime.

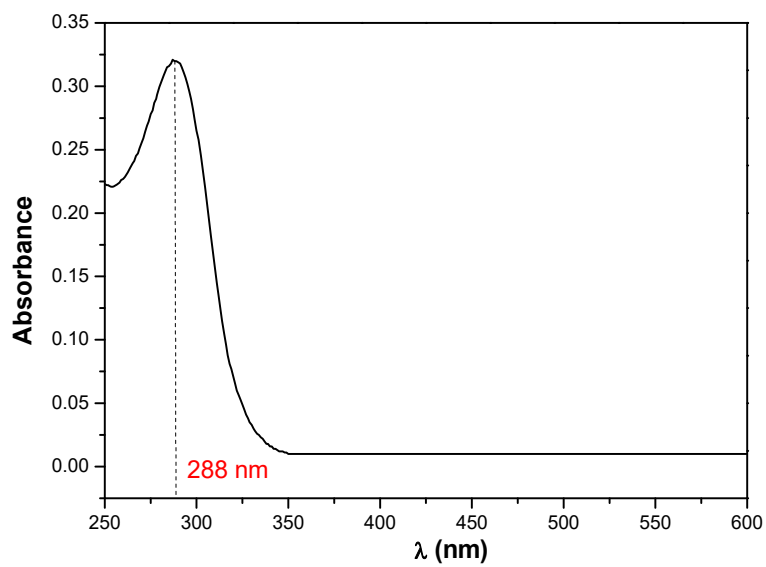


Fig. S2 UV-visible spectra of Cefixime (10 mg/L).

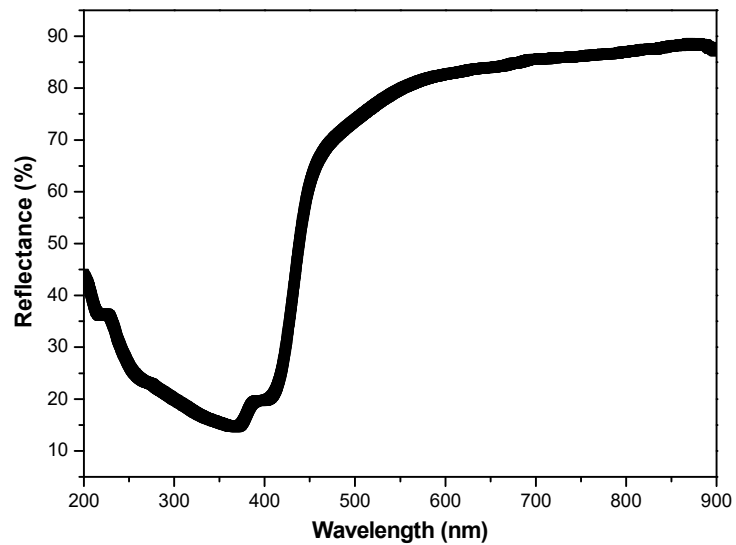


Fig. S3 UV-visible spectrum of ZnBi<sub>2</sub>O<sub>4</sub>.

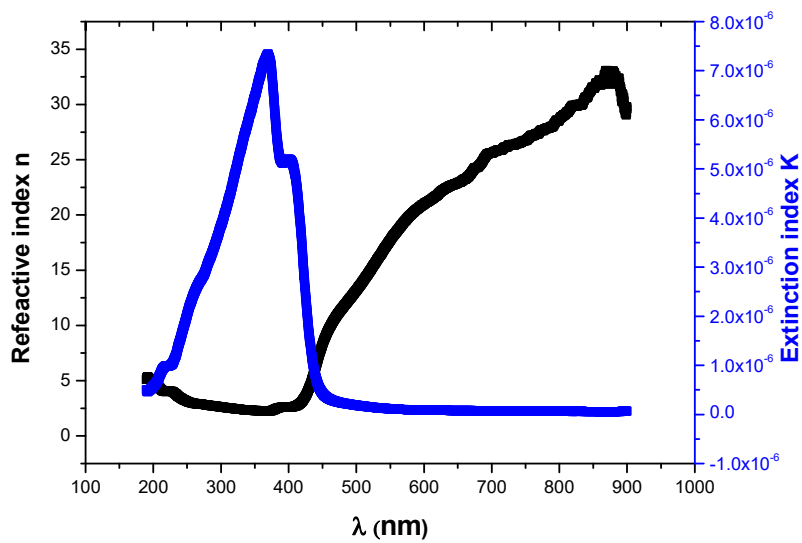


Fig. S4 Spectral distribution of  $n(\lambda)$  and  $K(\lambda)$ .

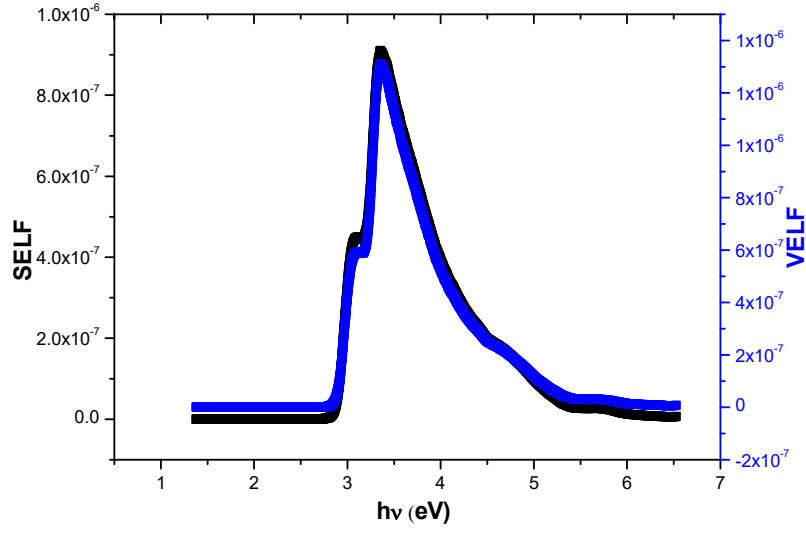


Fig. S5 Variation of SELF and VELF as a function of the energy ( $h\nu$ ).

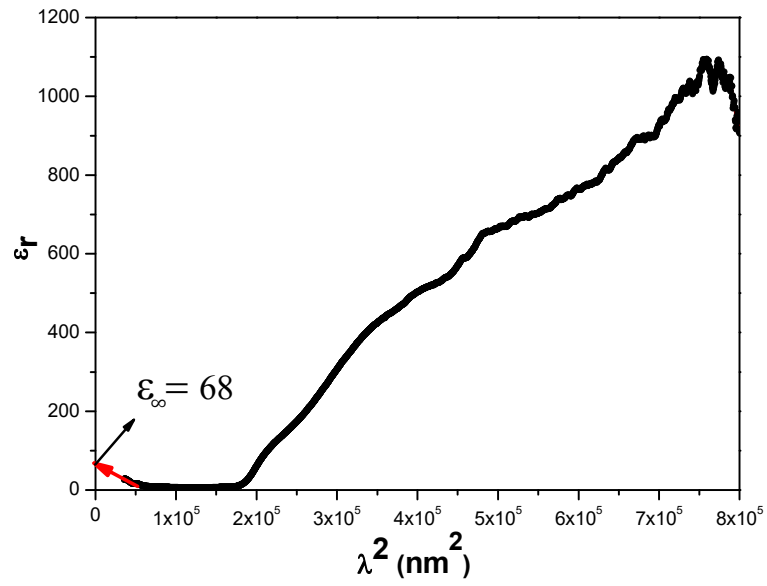


Fig. S6  $\epsilon_r$  as function of  $\lambda^2$ .

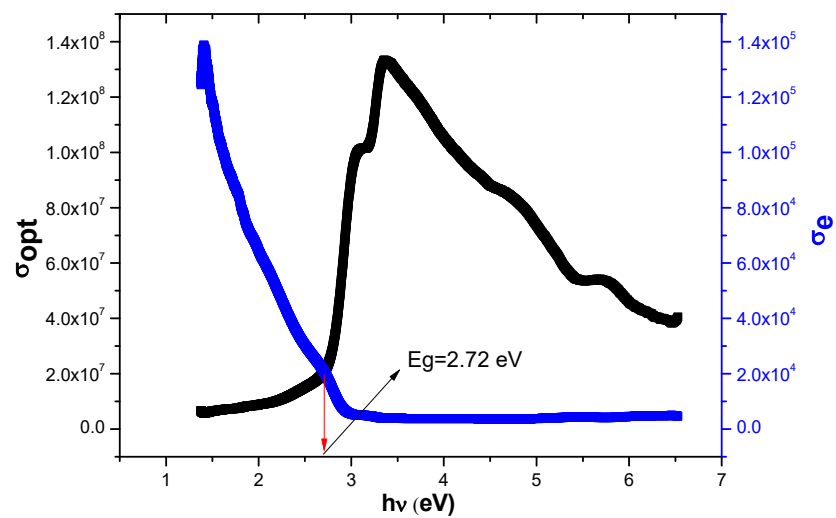


Fig. S7 Variation of the real and imaginary parts of the optical conductivity as a function of the energy ( $h\nu$ ).

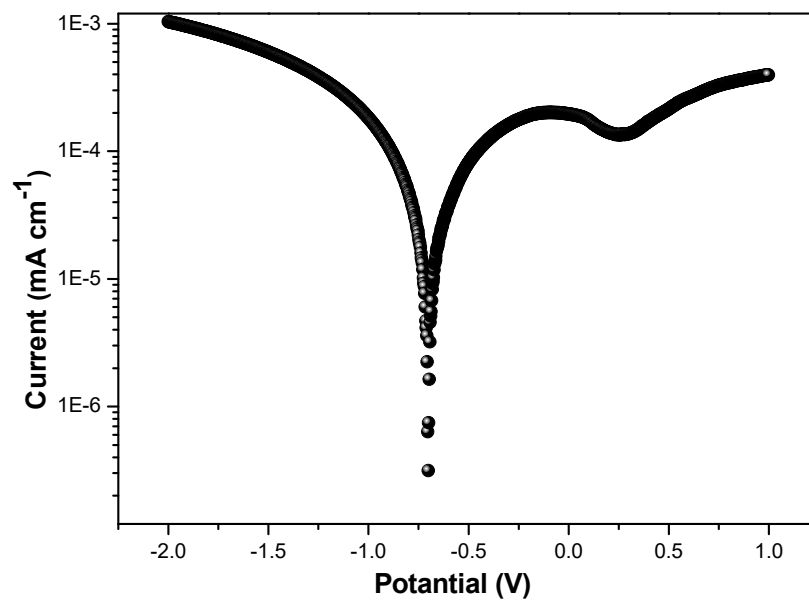


Fig. S8 Semi-logarithmic plot over  $\text{ZnBi}_2\text{O}_4$  electrode.

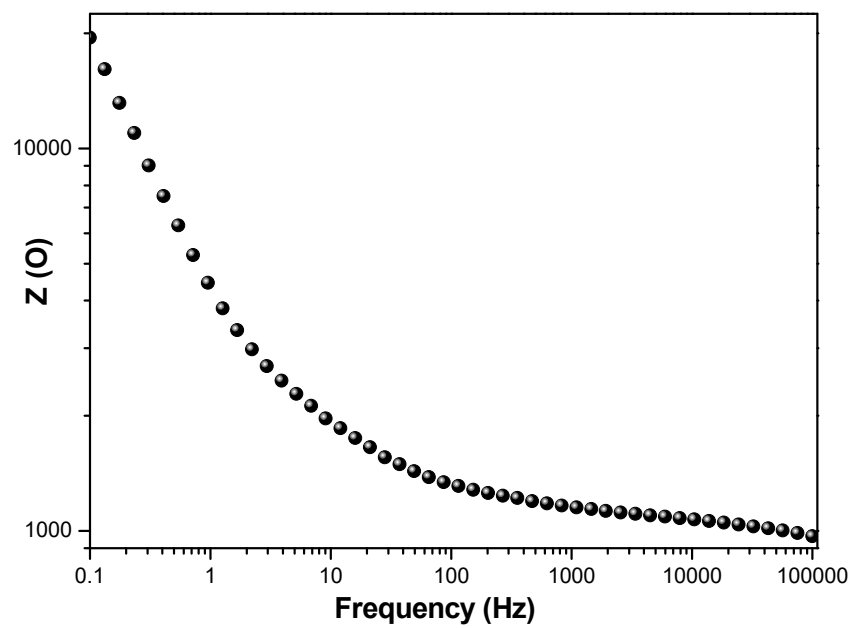


Fig. S9 Bode plan (log  $Z$  vs. log frequency).