

Article

Particulate Matter Contamination of Bee Pollen in an Industrial Area of the Po Valley (Italy)

Giulia Papa ¹, Giancarlo Capitani ², Marco Pellecchia ³, Ilaria Negri ^{1,*}

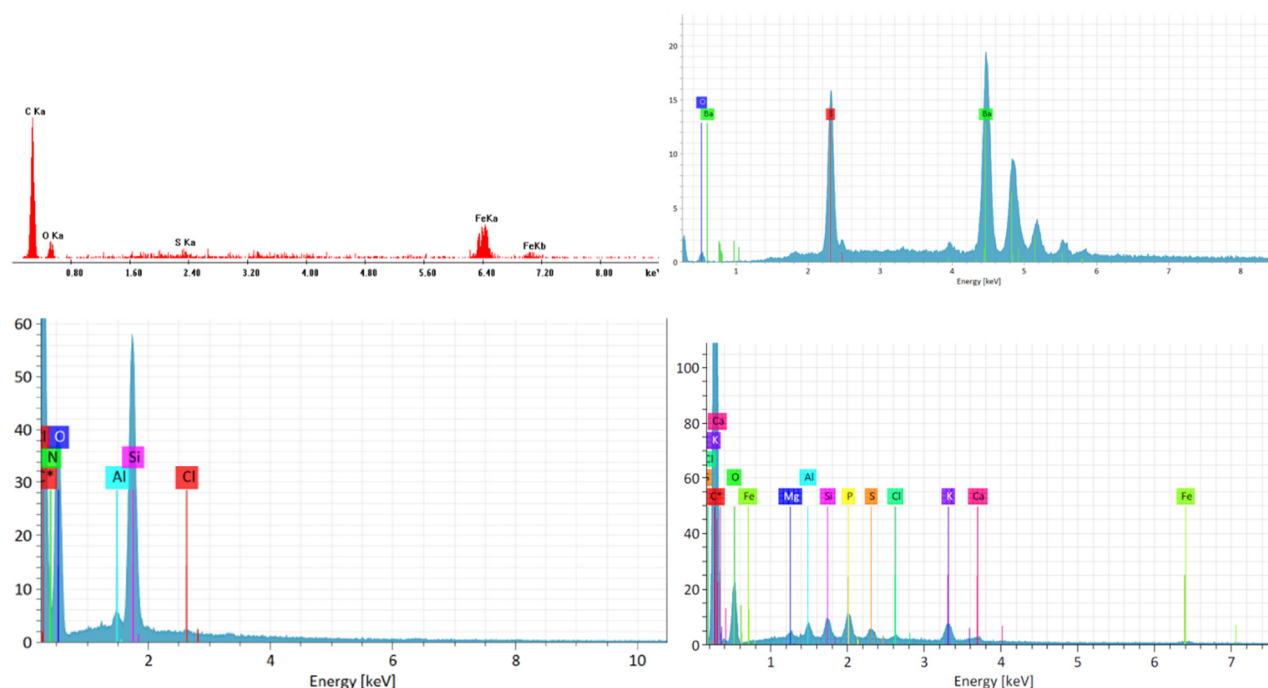
¹ Dipartimento di Scienze delle Produzioni Vegetali Sostenibili (DIPROVES), Università Cattolica del Sacro Cuore, 29122 Piacenza, Italy; giulia.papa@unicatt.it

² Dipartimento di Scienze dell'Ambiente e della Terra (DISAT), Università Milano Bicocca, 20126 Milano, Italy; giancarlo.capitani@unimib.it

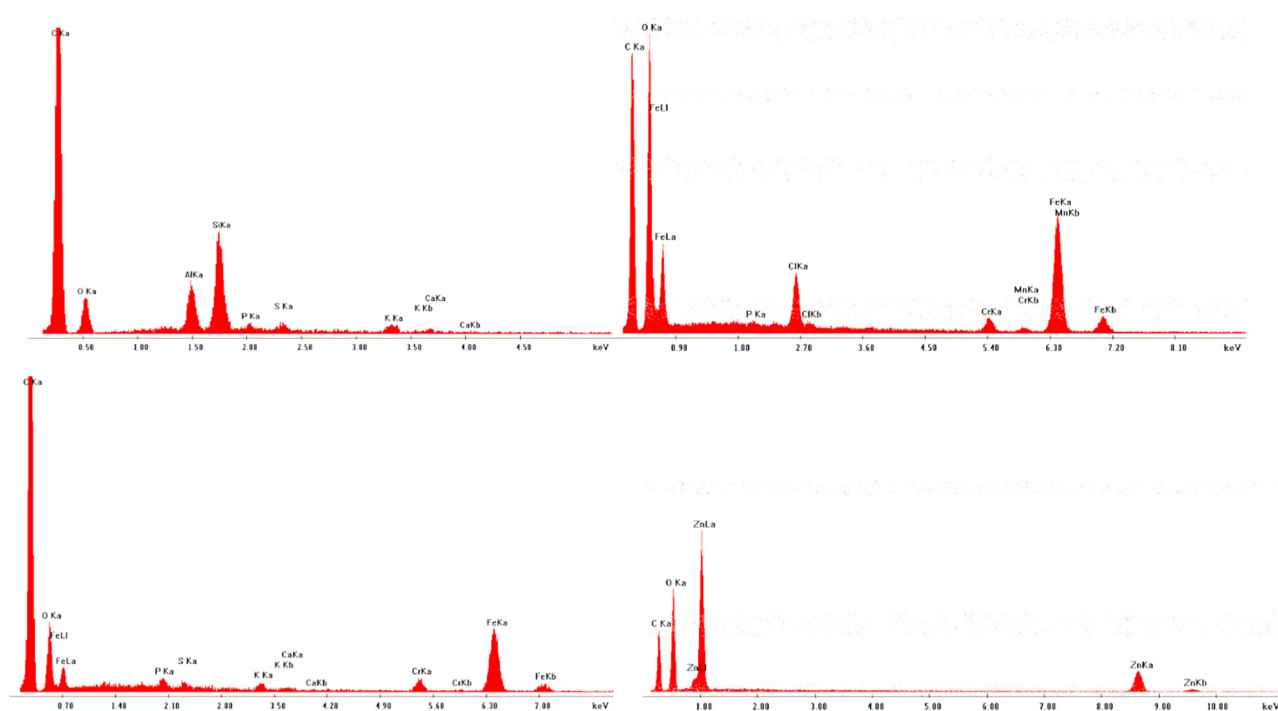
³ KOINE, Consulenze Ambientali, 43022 Montechiarugolo, Italy; marcopellecchia@koineambiente.com

* Correspondence: ilaria.negri@unicatt.it; Tel.: +30-0523599374

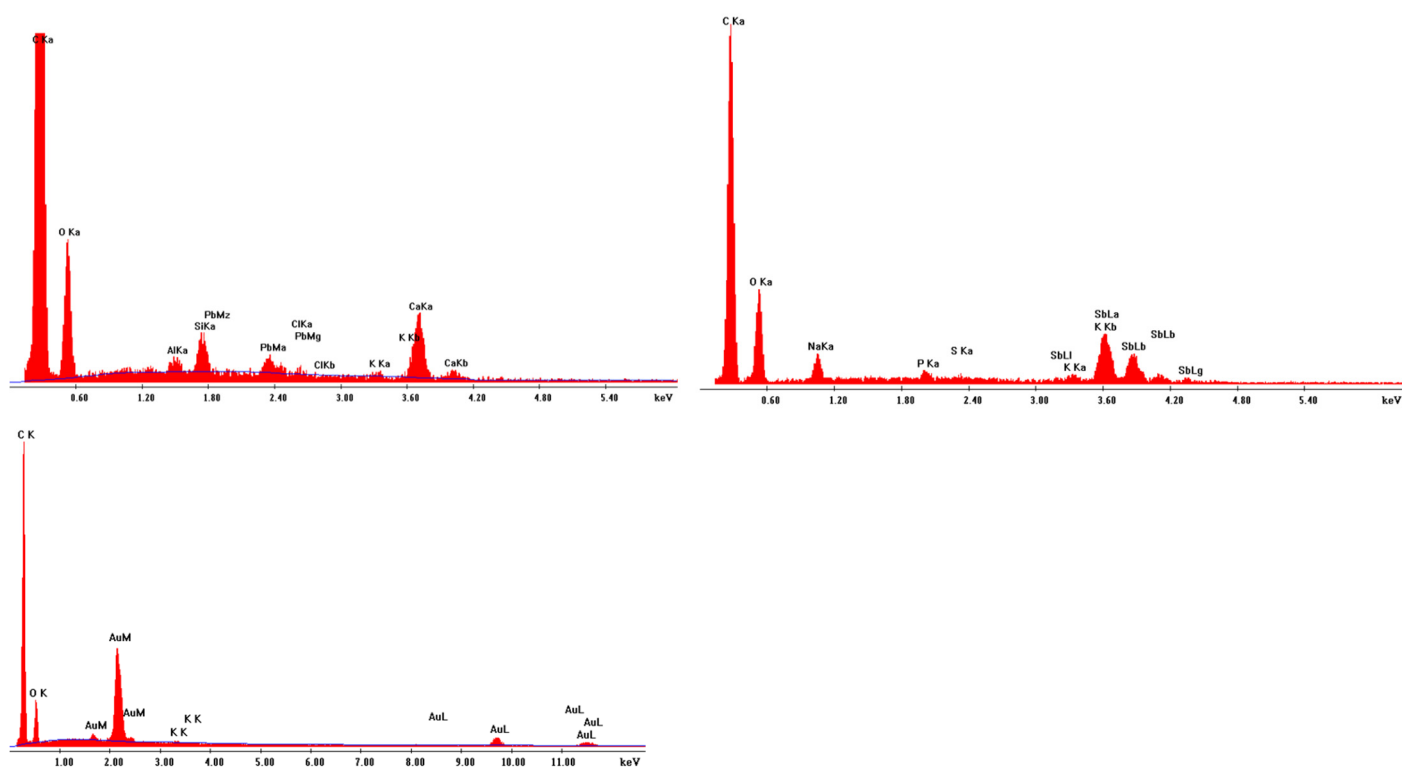
Supplementary Figures



Supplementary Figure S1: from left to right, representative EDX spectra of particles of iron oxides/hydroxides, barite, quartz, and of a clay mineral.



Supplementary Figure S2: from left to right, representative EDX spectra of a feldspar, a Fe-Cr alloy, a Fe-Cr-Mn alloy, and metallic Zn.



Supplementary Figure S3: from left to right, representative EDX spectra of a particle containing Pb, antimony oxide, and gold.