

Article

Fabrication of a Simultaneous Highly Transparent and Highly Hydrophobic Fibrous Films

Doo-Hyeb Youn *, Kyu-Sung Lee, Sun-Kyu Jung and Mangu Kang

New Materials Research Group, Electronics and Telecommunications Research Institute, 218 Gajeong-ro, Yuseong-gu, Daejeon 34129, Korea; kyusung.lee@etri.re.kr (K.-S.L.); skjung@etri.re.kr (S.-K.J.); 10009kang@etri.re.kr (M.K.)

* Correspondence: dhyoun@etri.re.kr

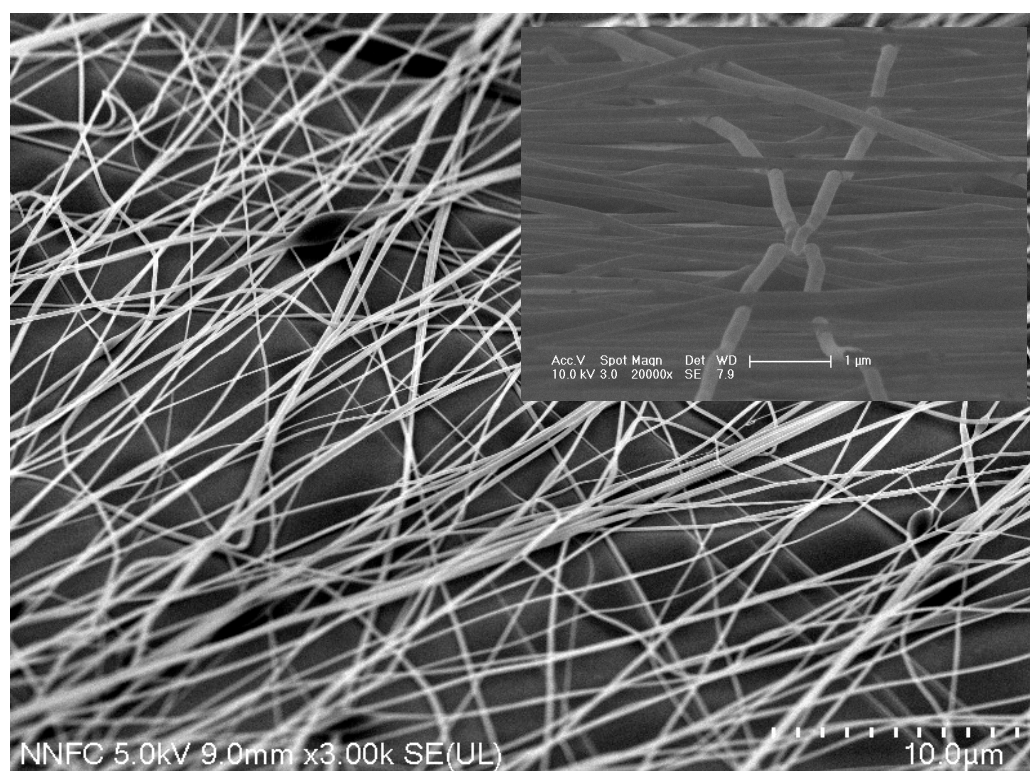
Supplementary Materials

Table S1. Water contact angle obtained for randomly distributed electrospun fibers.

Deposition time	10 s	20 s	30 s	40 s
Contact Angle (Average)[degree]	73.2 ± 1.8	98.8 ± 0.4	116.0 ± 0.7	125.6 ± 0.7
Left Angle [degree]	73.0	98.8	117.0	126.4
Right Angle [degree]	73.4	98.8	116.4	126.5
Hysteresis [degree]	0.37	0.01	0.59	0.1
Height from Top to Base [mm]	0.95	1.33	1.43	1.49
Base Line Length [mm]	2.66	2.37	1.87	1.59
Base Area [mm ²]	5.55	4.41	2.74	1.98
Drop Volume [uL]	3.24	4.28	3.66	3.35
Wetting Energy [mN/m]	21.1	26.2	32.6	43.2
Spreading Coeff. [mN/m]	−51.7	−84.0	−105.4	−116.0
Work of Adhesion [mN/m]	93.0	61.6	40.2	29.6

Table S2. Water contact angle obtained for aligned electrospun fibers.

Deposition time	10 s	20 s	30 s	40 s
Contact Angle (Average)[degree]	76.5 ± 2.2	107.5 ± 5.1	125.6 ± 6.8	141.8 ± 2.7
Left Angle [degree]	77.6	108.0	124.8	141.1
Right Angle [degree]	77.2	108.0	125.3	139.5
Hysteresis [degree]	0.41	0.06	0.5	1.59
Height from Top to Base [mm]	1.02	1.31	1.52	1.64
Base Line Length [mm]	2.65	1.97	1.65	1.2
Base Area [mm ²]	5.5	3.1	2.13	1.13
Drop Volume [uL]	3.45	3.3	3.6	3.44
Wetting Energy [mN/m]	15.9	22.55	41.81	56.01
Spreading Coeff. [mN/m]	−56.9	−95.3	−114.6	−128.8
Work of Adhesion [mN/m]	88.7	50.1	30.99	16.79

**Figure S1.** Surface roughness of randomly distributed electrospun fibers.

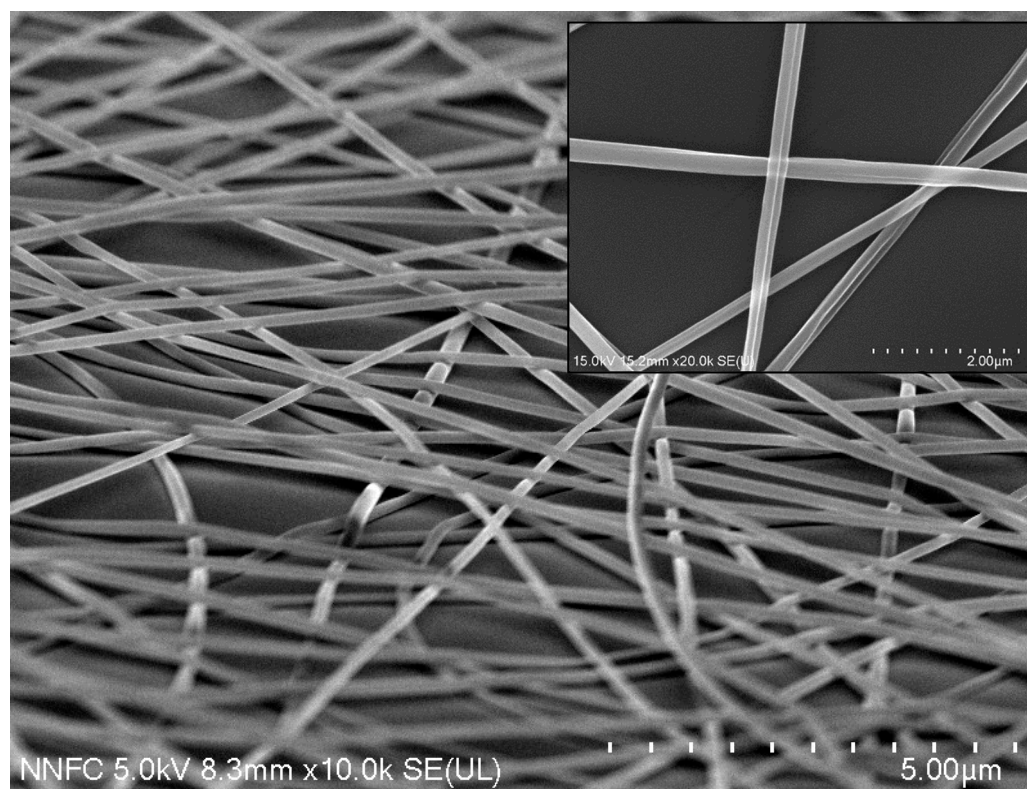


Figure S2. SEM surface morphology of the randomly distributed fibers.