

Three-Dimensional Characterization of Peripapillary Retinal Pigment Epithelium-Basement Membrane Layer in Patients following Lumbar Puncture

Junfei Tong ^{1,†}, Pengfei Dong ^{1,2,†}, Sachin Kedar ^{3,4}, Deepta Ghate ⁴ and Linxia Gu ^{1,2,*}

¹ Department of Mechanical and Materials Engineering, University of Nebraska-Lincoln, Lincoln, NE 68588-0656, USA; tongjunfei094@gmail.com (J.T.); pengfeidong0415@gmail.com (P.D.)

² Department of Biomedical and Chemical Engineering, Florida Institute of Technology, Melbourne, FL32901, USA

³ Department of Neurological Sciences, University of Nebraska Medical Center, Omaha, NE 68198-8440, USA; sachin.kedar@unmc.edu

⁴ Stanley M. Truhlsen Eye Institute, University of Nebraska Medical Center, Omaha, NE 68105-1119, USA; dghate@unmc.edu

* Correspondence: gul@fit.edu; Tel.: +1-321-674-8447

† Both authors contributed equally to this paper.

Received: 18 January 2020; Accepted: 19 February 2020; Published: date

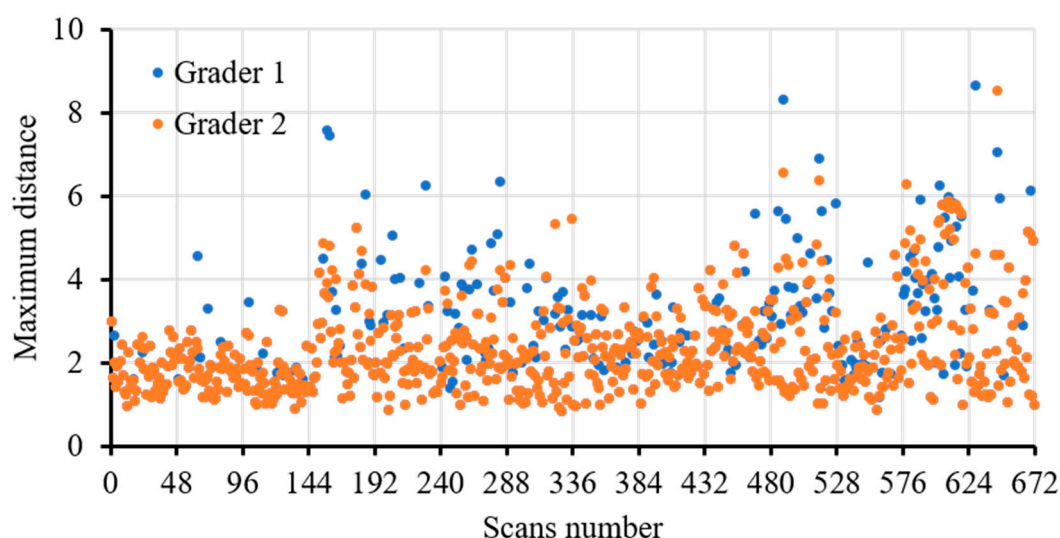
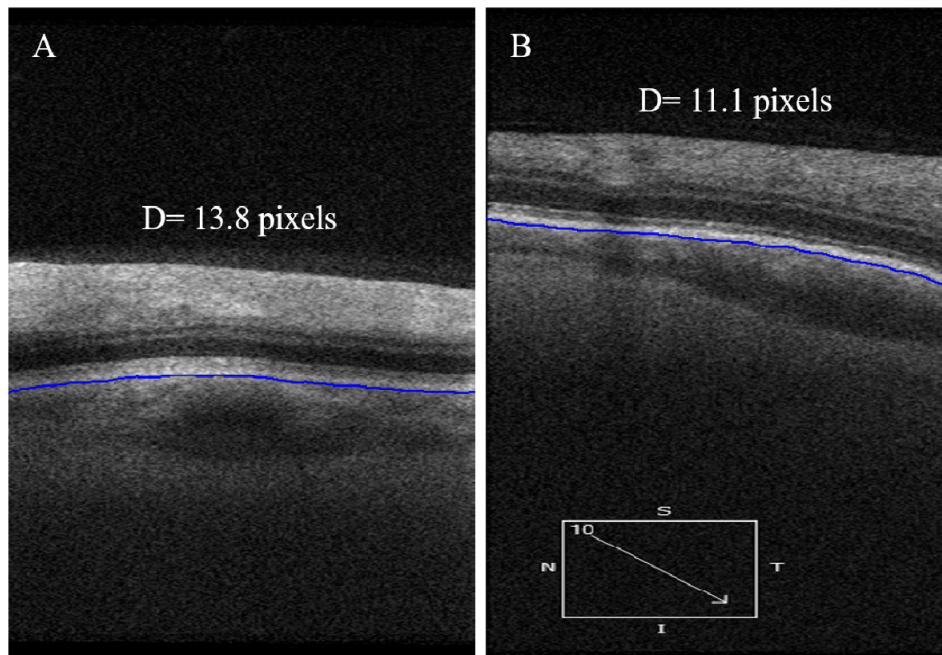


Figure S1. The Dmax in the 672 scans from the 14 left eyes accessed by two graders.



Left eye from patient 07

Left eye from patient 12

Figure S2. Two excluded eyes due to non-straight ppRPE/BM layer with D larger than 10 pixels.