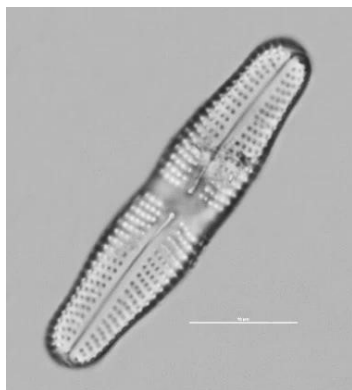


**Figure S1.** Illustrations of the 111 species of diatoms recognized in the Pilato and Palazzo Borghese lakes. All bars correspond to a length of 10  $\mu\text{m}$ .

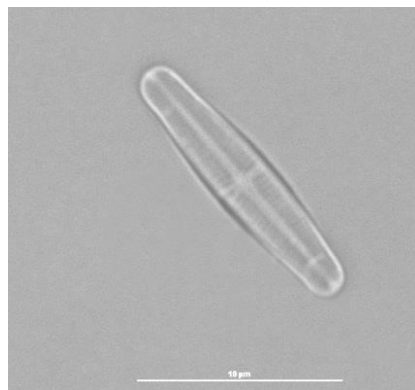
*Achnanthes coarctata*



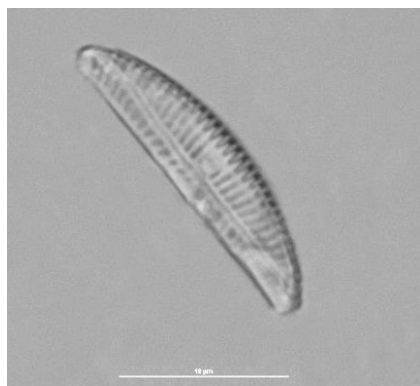
*Achnanthidium lineare*



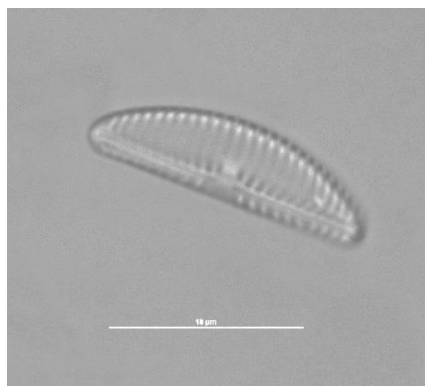
*Achnanthidium minutissimum*



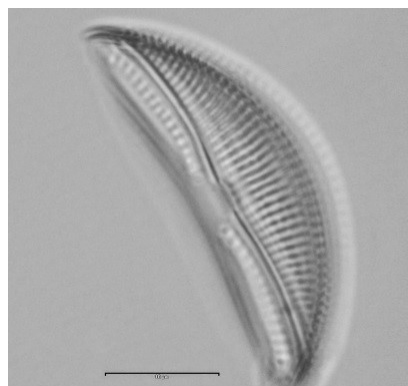
*Amphora inariensis*



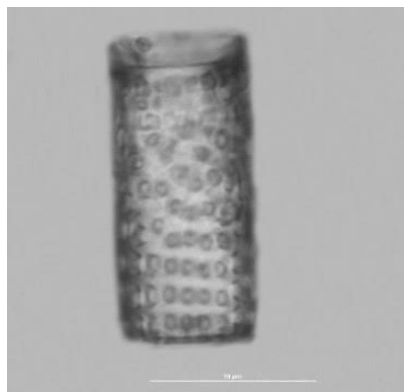
*Amphora meridionalis*



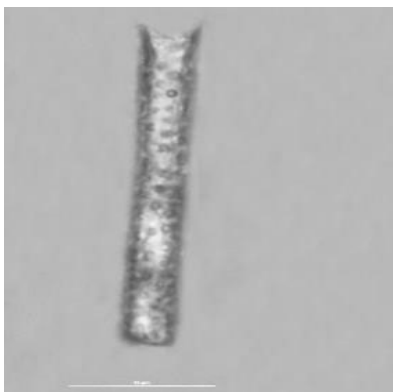
*Amphora ovalis*



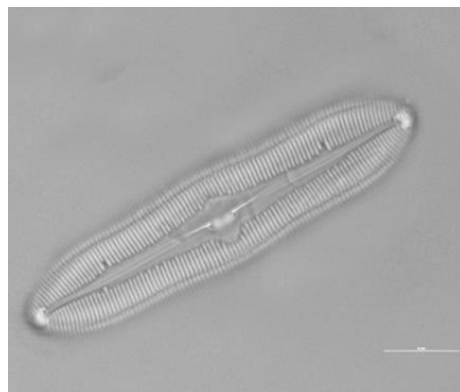
*Aulacoseira granulata*



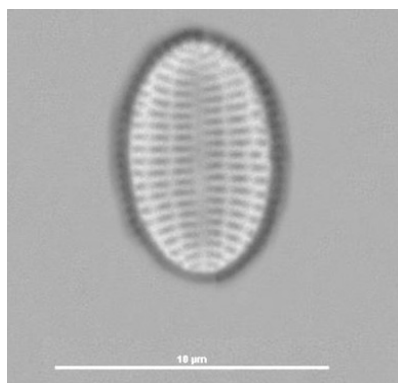
*Aulacoseira granulata* var. *angustissima*



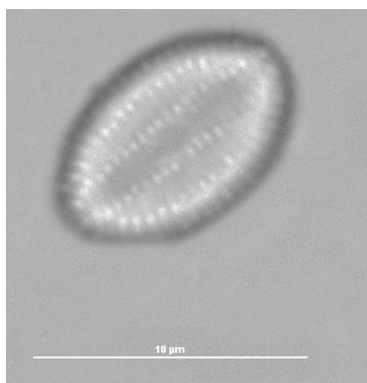
*Caloneis silicula*



*Cocconeis euglypta*



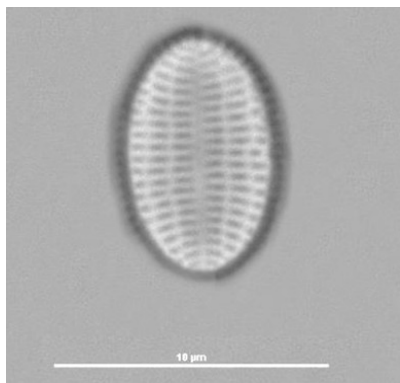
*Cocconeis euglyptoides*



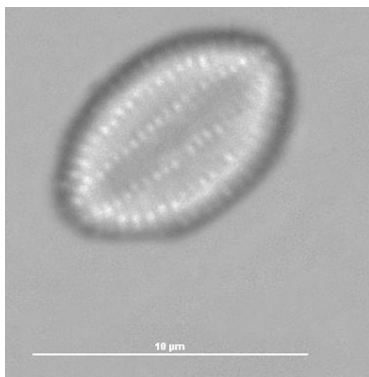
*Cocconeis pediculus*



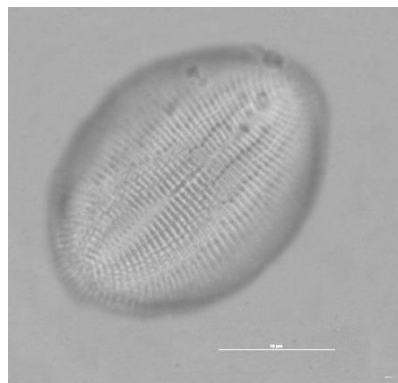
*Cocconeis euglypta*



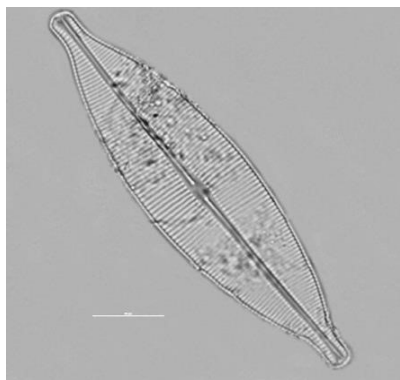
*Cocconeis euglyptoides*



*Cocconeis pediculus*



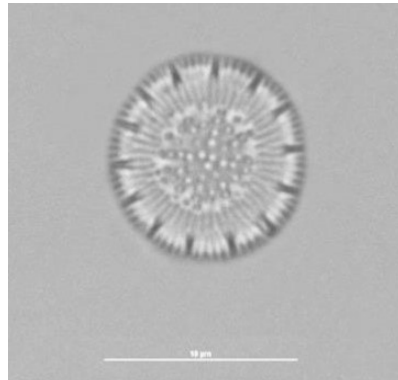
*Craticula ambigua*



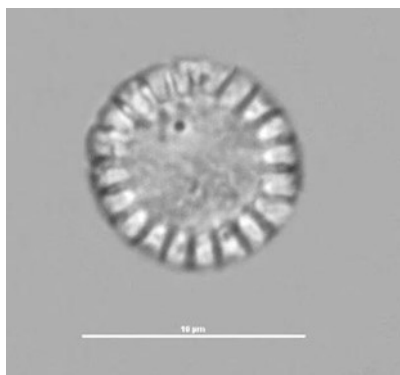
*Craticula molestiformis*



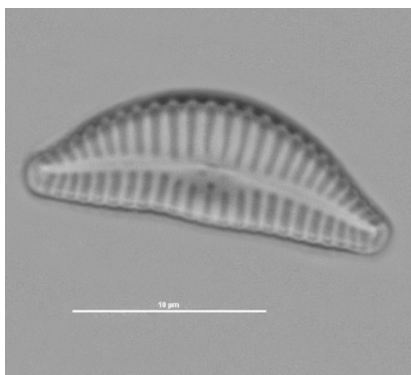
*Cyclotella intermedia*



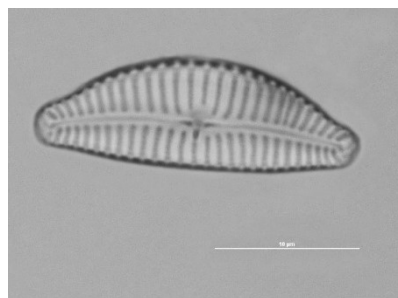
*Cyclotella meneghiniana*



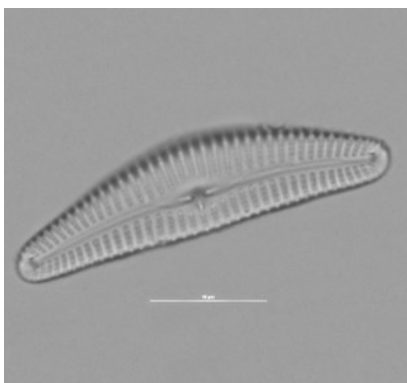
*Cymbella excisa*



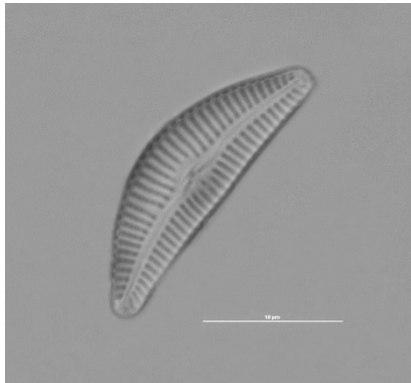
*Cymbella excisa* var. *procera*



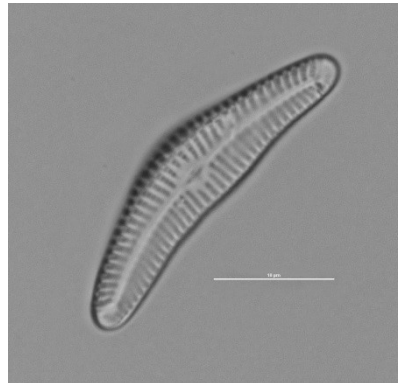
*Cymbella parva*



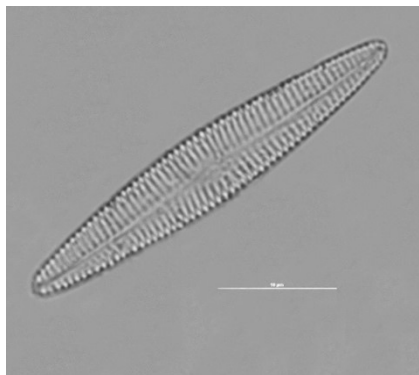
*Cymbella perparva*



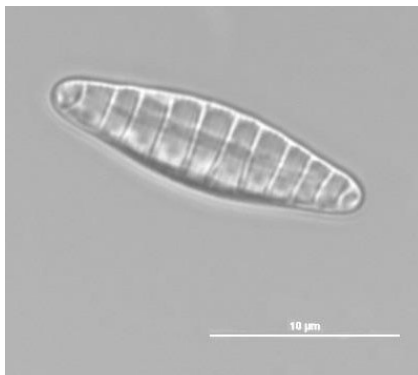
*Cymbella vulgata* var. *plitvicensis*



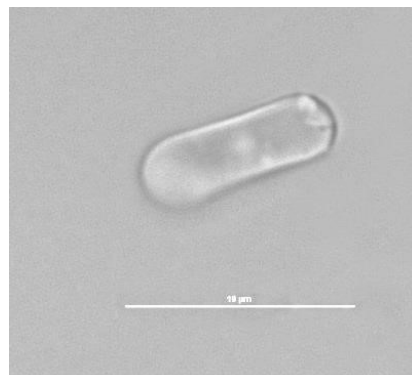
*Cymbopleura yateana*



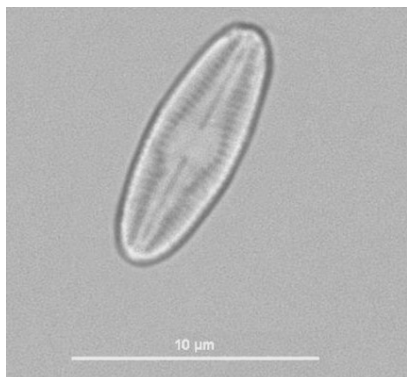
*Denticula tenuis*



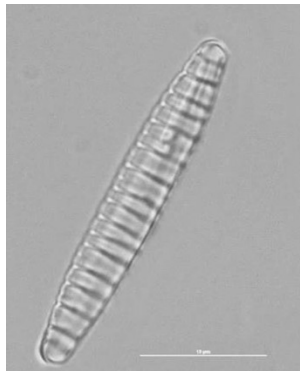
*Diadesmis contenta*



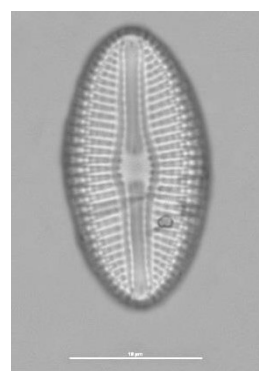
*Diadesmis perpusilla*



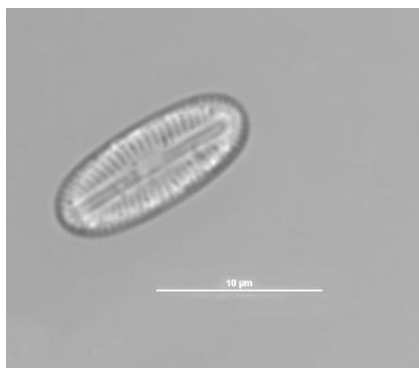
*Diatoma moniliformis*



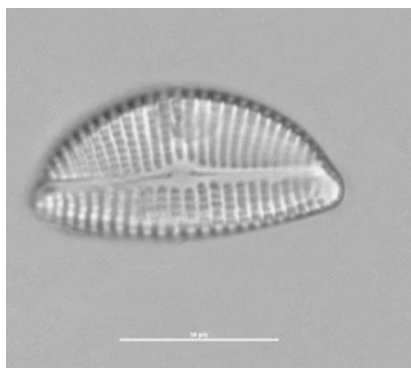
*Diploneis krammerii*



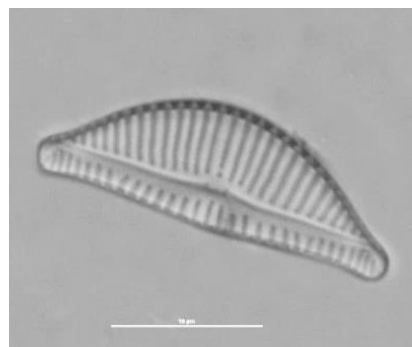
*Diploneis oculata*



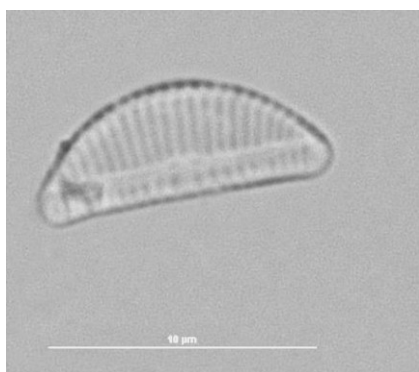
*Encyonema auerswaldii*



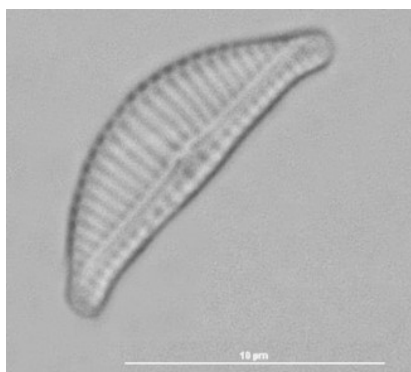
*Encyonema lange-bertalotii*



*Encyonema minutum*



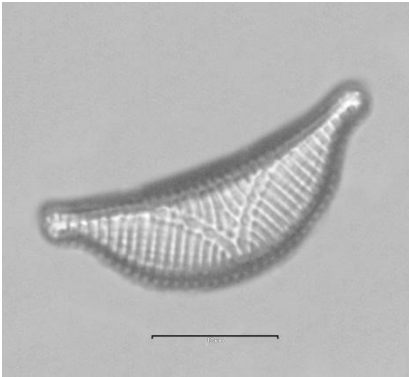
*Encyonema ventricosum*



*Epithemia adnata*



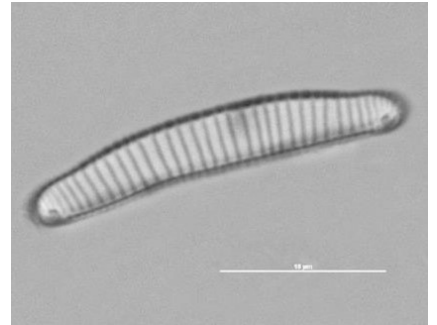
*Epithemia sorex*



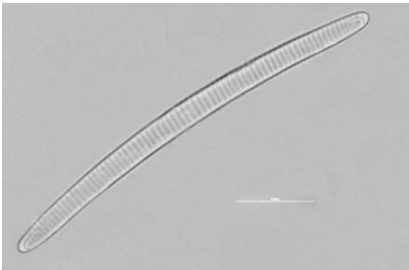
*Eucocconeis laevis*



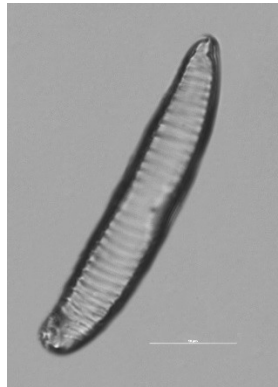
*Eunotia arcus*



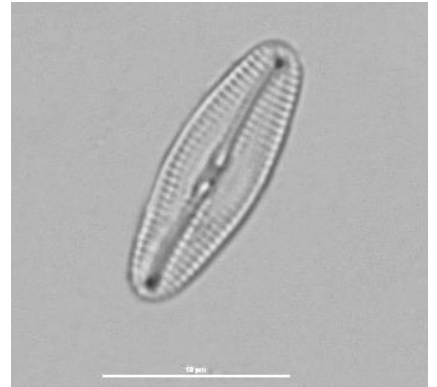
*Eunotia bilunaris*



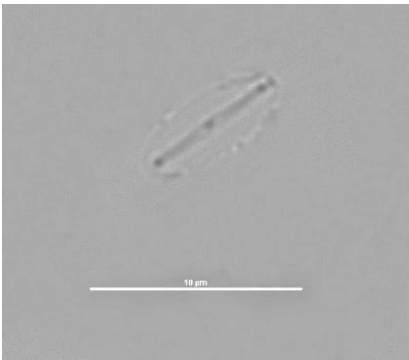
*Eunotia minor*



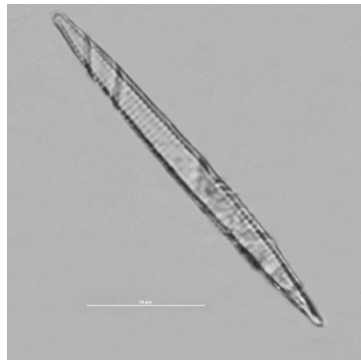
*Fallacia insociabilis*



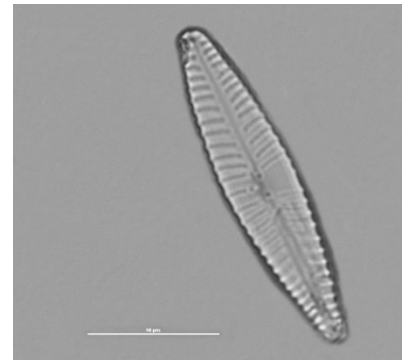
*Fistulifera saprophila*



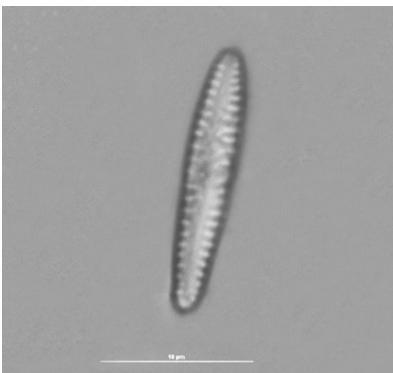
*Fragilaria acidoclinata*



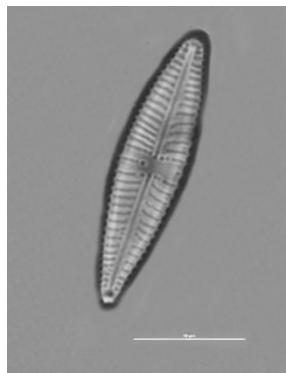
*Gomphonema angustatum*



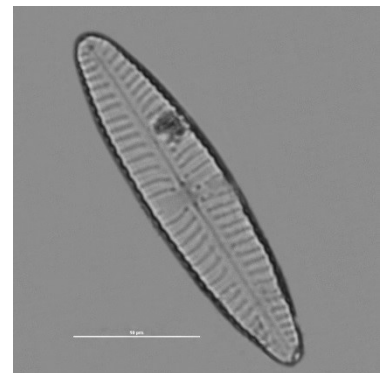
*Gomphonema cuneolus*



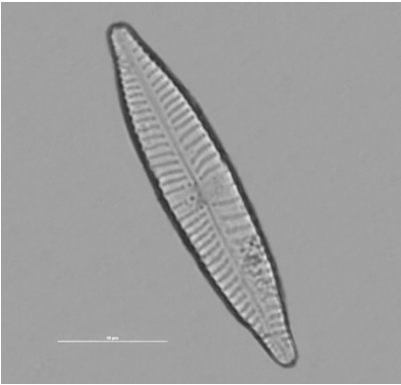
*Gomphonema cybelliclinum*



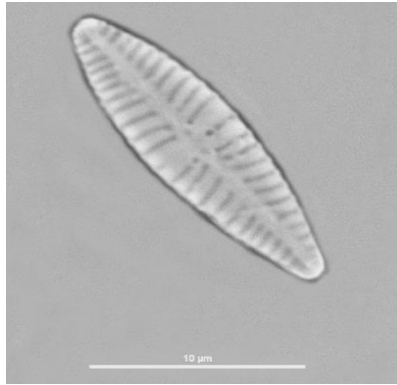
*Gomphonema drutelingense*



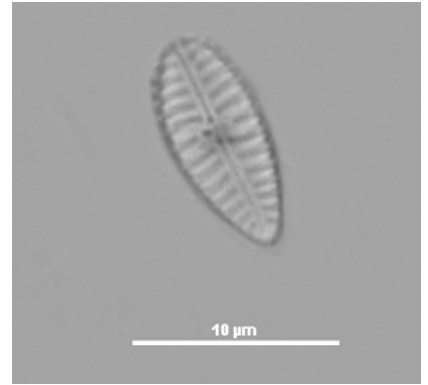
*Gomphonema longilineare*



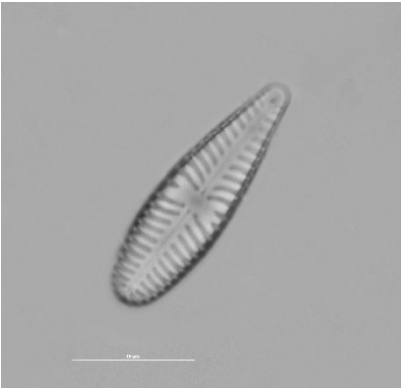
*Gomphonema micropus*



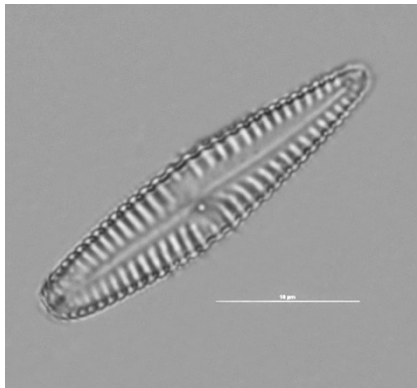
*Gomphonema minutum*



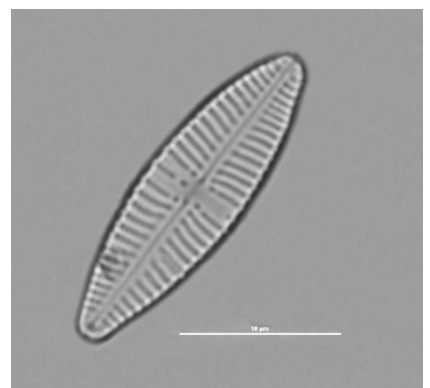
*Gomphonema olivaceum*



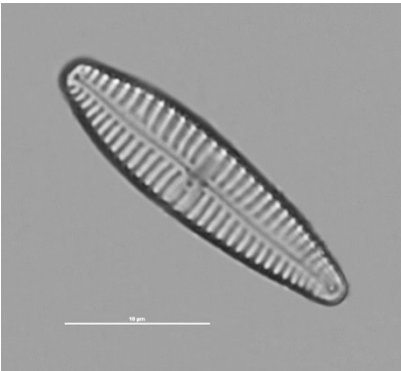
*Gomphonema pumilum*



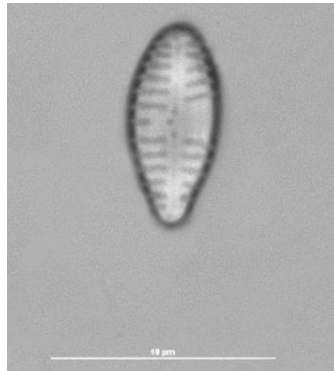
*Gomphonema rosenstockianum*



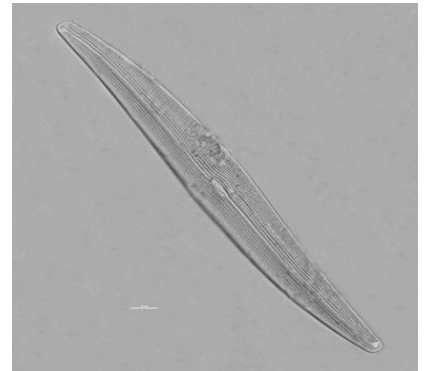
*Gomphonema sarcophagus*



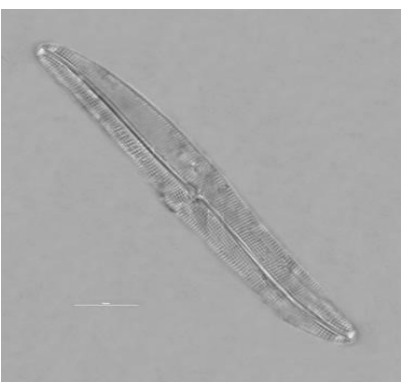
*Gomphonema tergestinum*



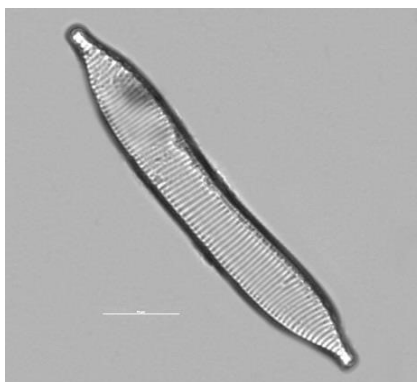
*Gyrosigma attenuatum*



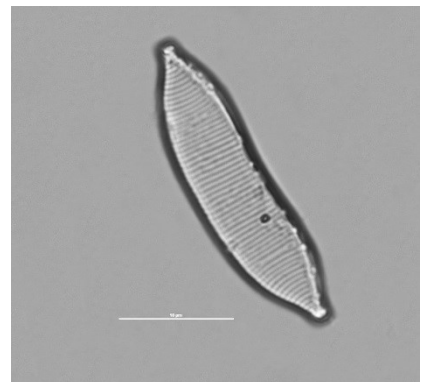
*Gyrosigma sciotense*



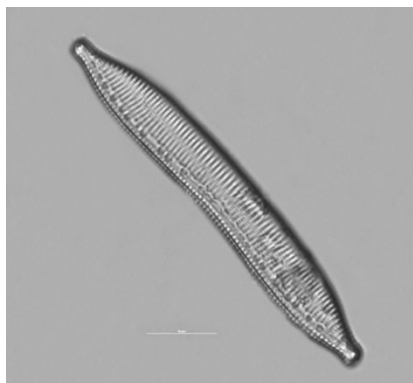
*Hantzschia abundans*



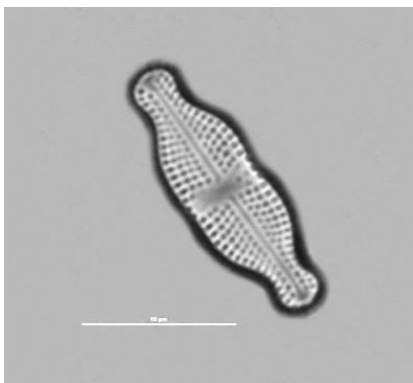
*Hantzschia amphioxys*



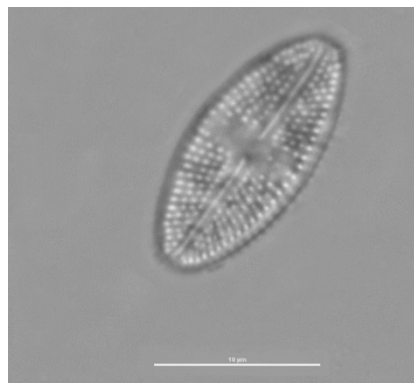
*Hantzschia calcifuga*



*Luticola binodis*



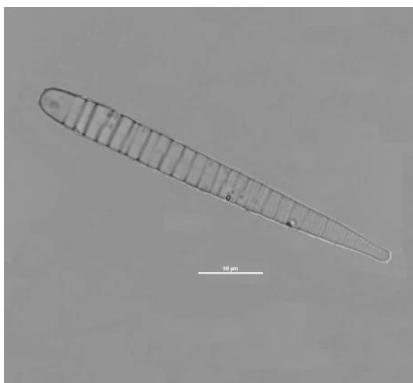
*Luticola mutica*



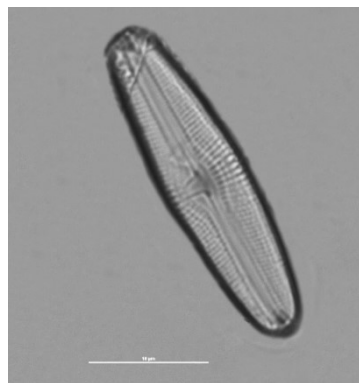
*Luticola nivalis*



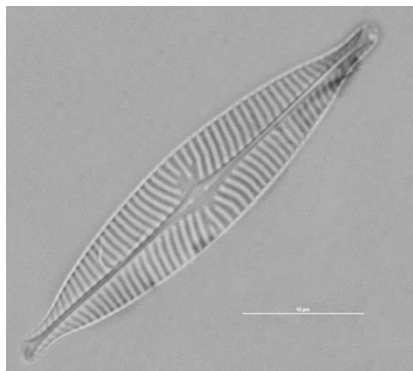
*Meridion circulare*



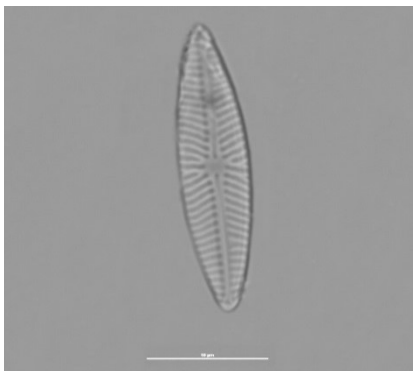
*Muelleria gibbula*



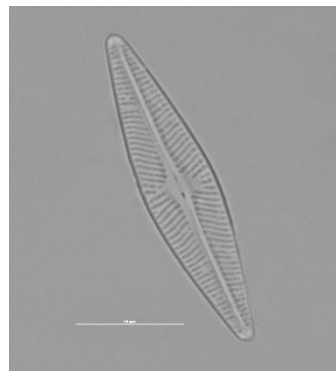
*Navicula capitatoradiata*



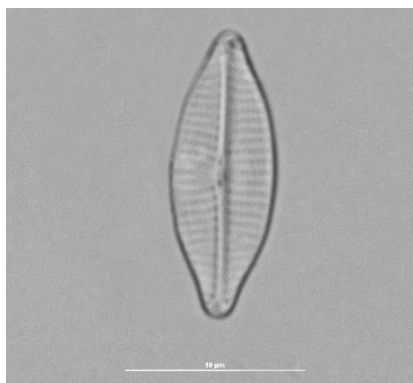
*Navicula cryptotenella*



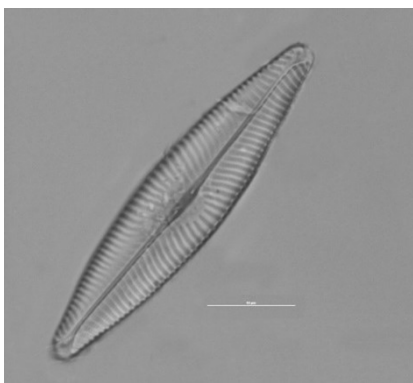
*Navicula densilineolata*



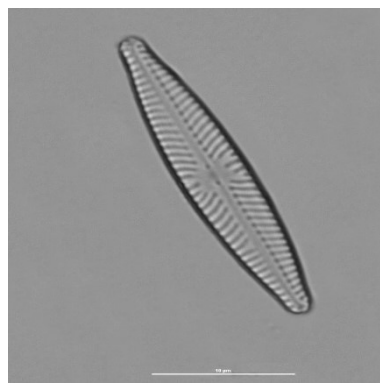
*Navicula gregaria*



*Navicula lanceolata*

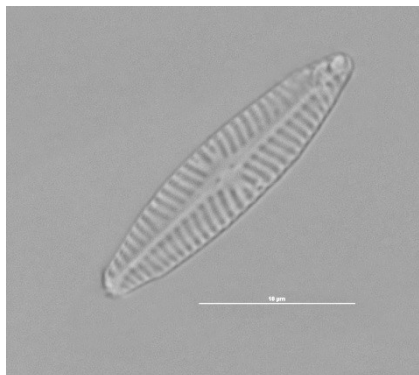


*Navicula lundii*

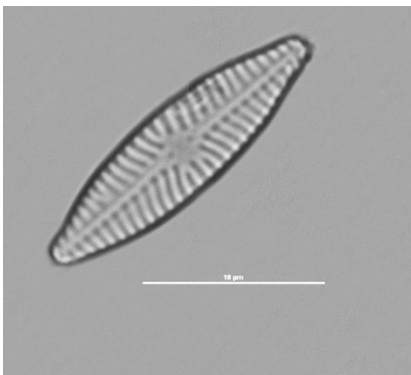




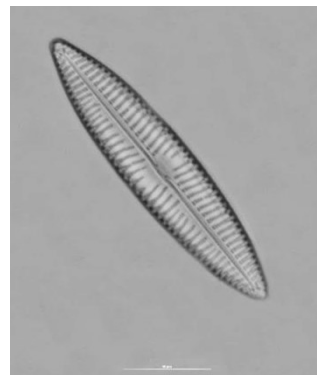
*Navicula microdigitoradiata*



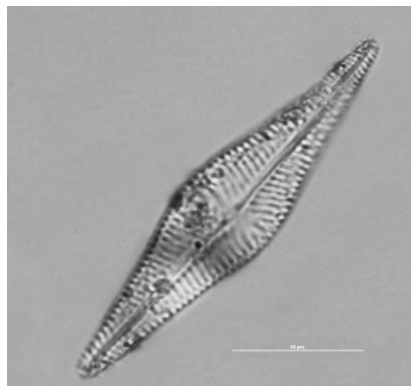
*Navicula reichardtiana*



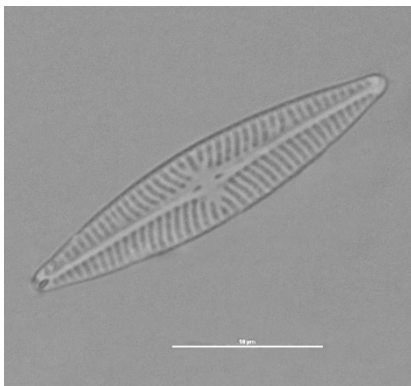
*Navicula tripunctata*



*Navicula trivialis*



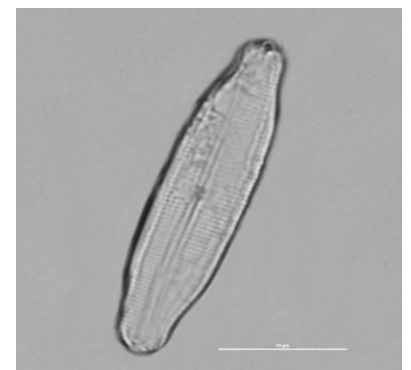
*Navicula wildii*



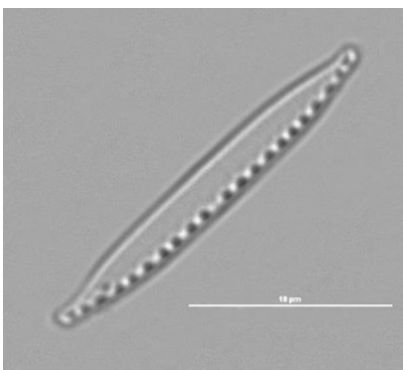
*Neidium bisulcatum*



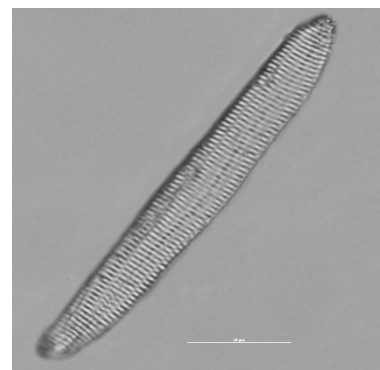
*Neidium longiceps*



*Nitzschia acidoclinata*



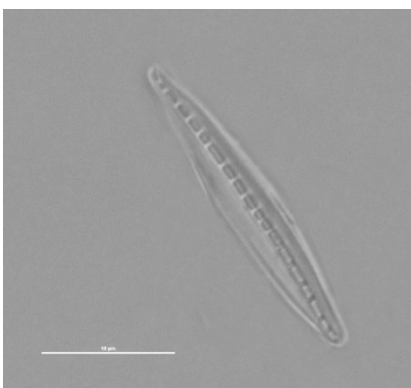
*Nitzschia angustata*



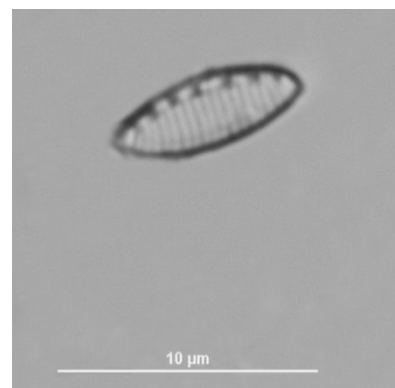
*Nitzschia clausii*



*Nitzschia dissipata*



*Nitzschia inconspicua*



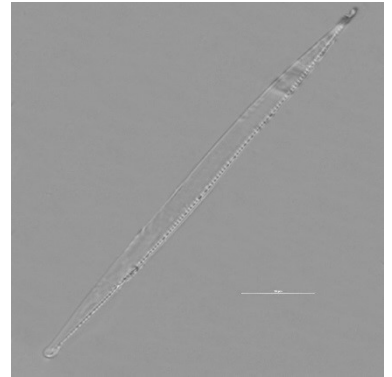
*Nitzschia linearis*



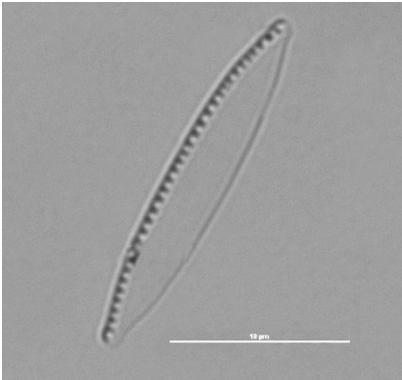
*Nitzschia pusilla*



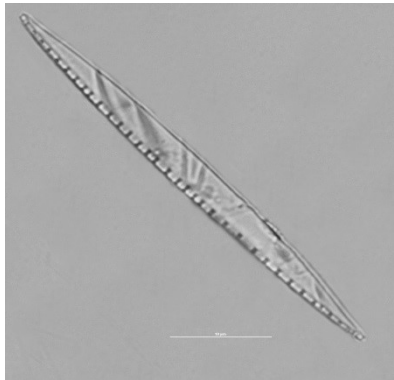
*Nitzschia subtilis*



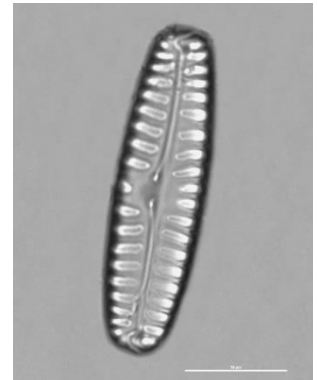
*Nitzschia supralitorea*



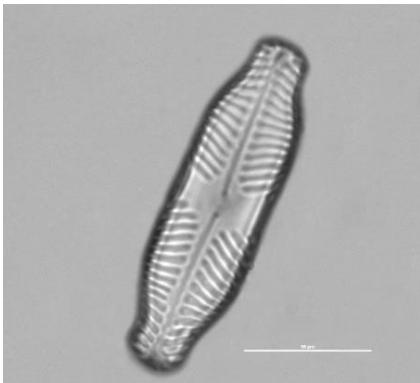
*Nitzschia sociabilis*



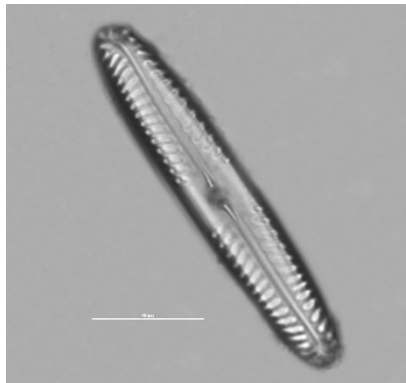
*Pinnularia borealis*



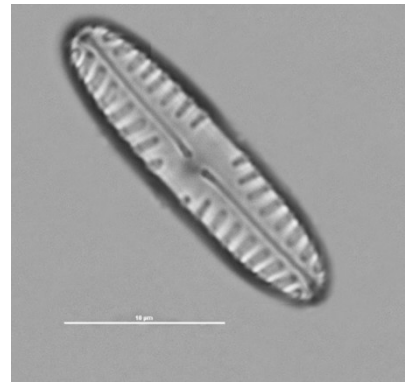
*Pinularia grunowii*



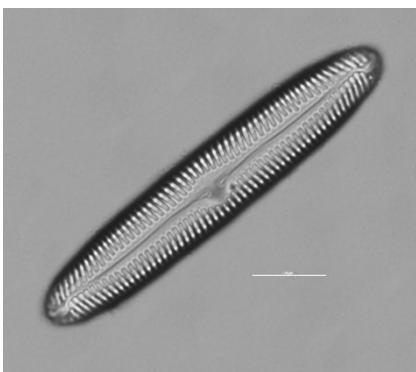
*Pinnularia microstauron var. angusta*



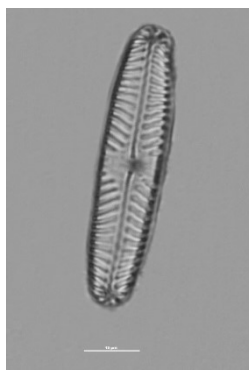
*Pinnularia obscura*



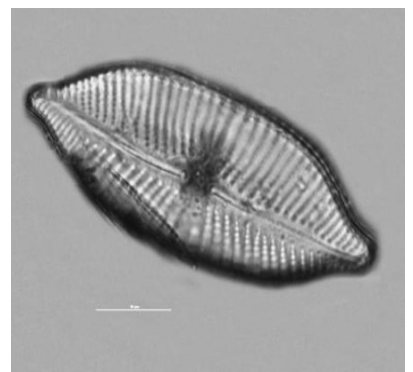
*Pinnularia rupestris*



*Pinnularia schoenfelderi*

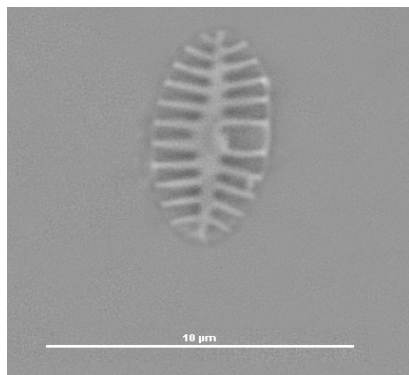


*Placoneis placentula*

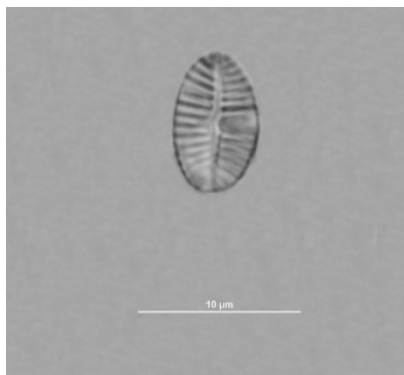




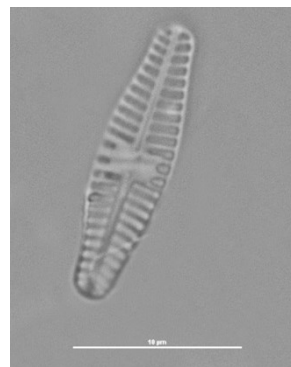
*Planothidium frequentissimum*



*Planothidium joursacense*



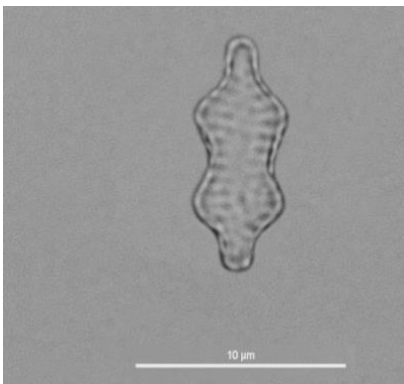
*Planothidium lanceolatum*



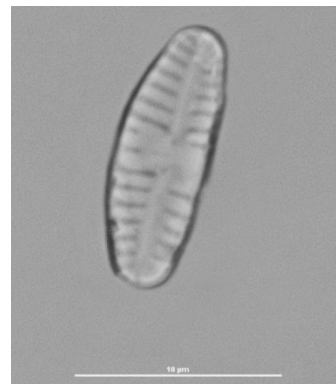
*Psammothidium daonense*



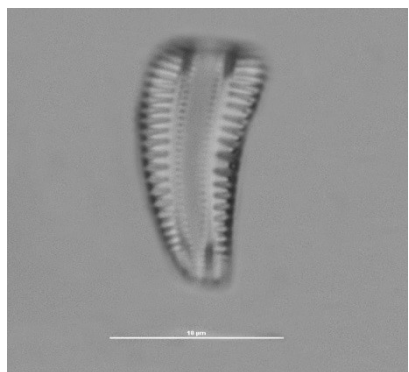
*Pseudostaurosira robusta*



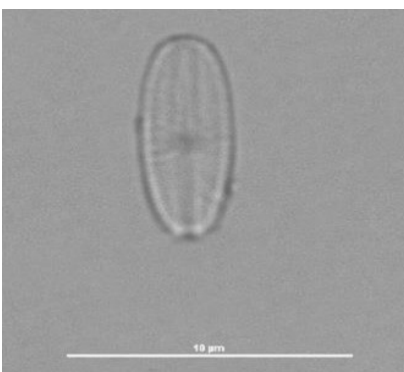
*Reimeria sinuata*



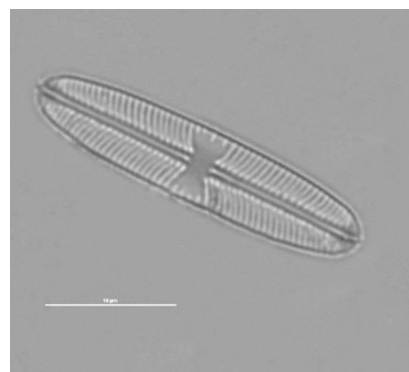
*Rhoicosphenia abbreviata*



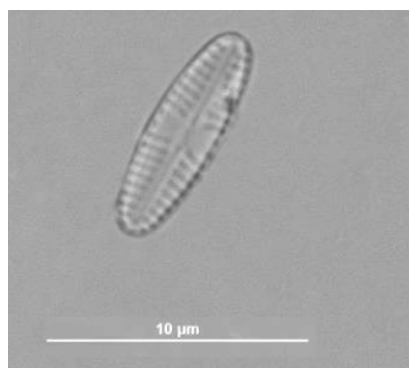
*Sellaphora atomoides*



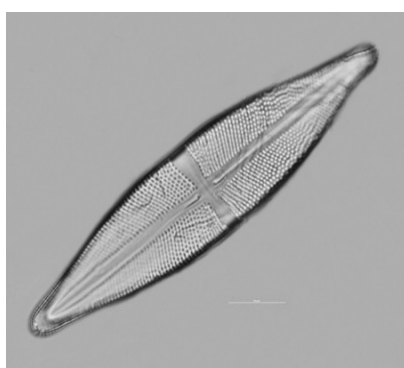
*Sellaphora pseudopupula*



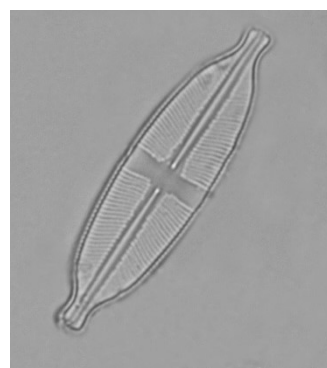
*Sellaphora saugerresii*



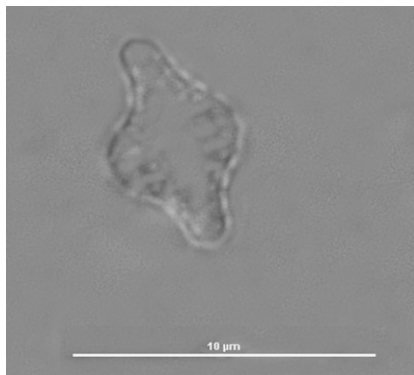
*Stauroneis gracilis*



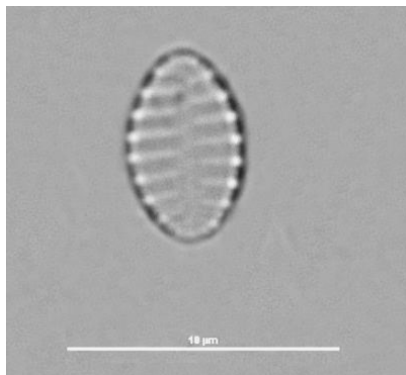
*Stauroneis reichardtii*



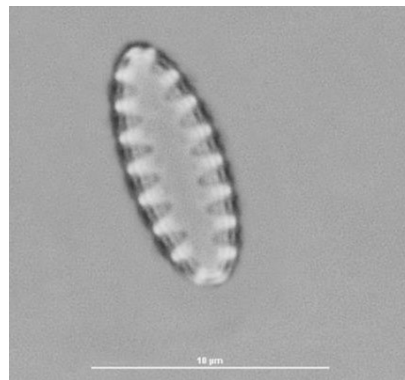
*Staurosira contruens*



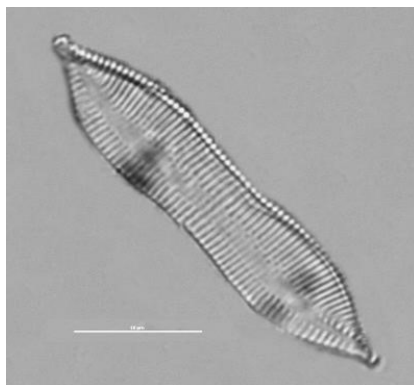
*Staurosira venter*



*Staurosirella lapponica*



*Tryblionella apiculata*



*Ulnaria acus*



*Ulnaria ulna*

