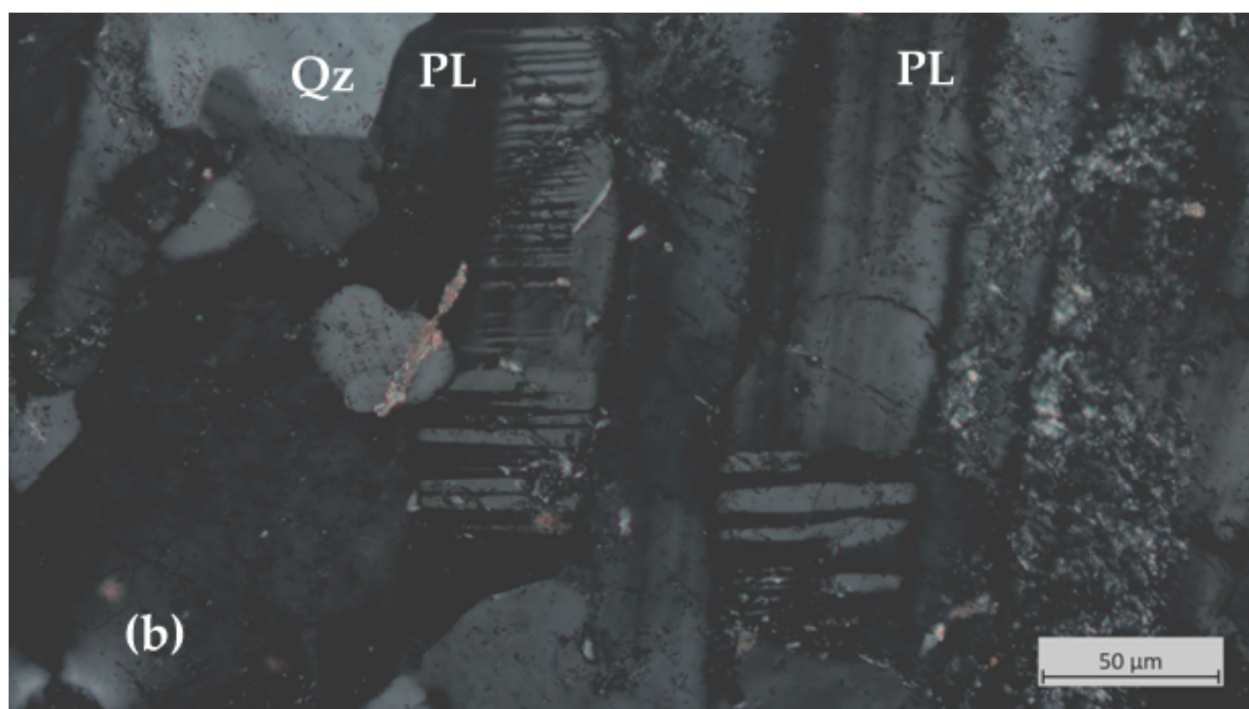
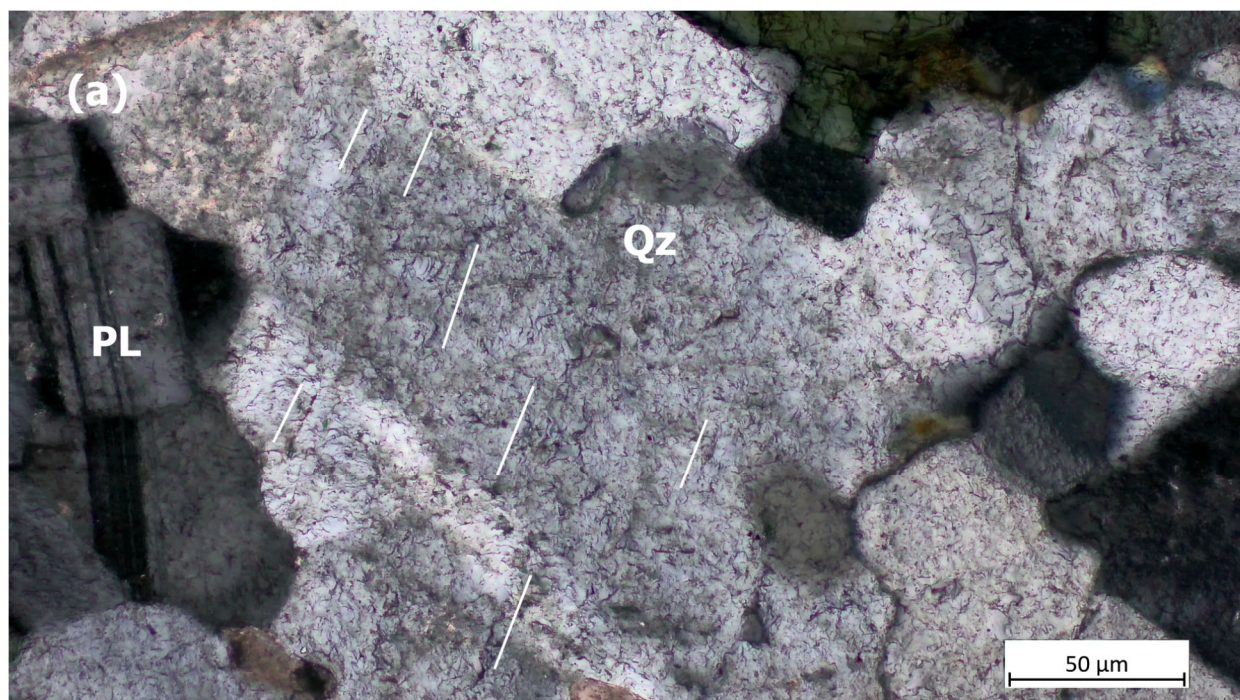


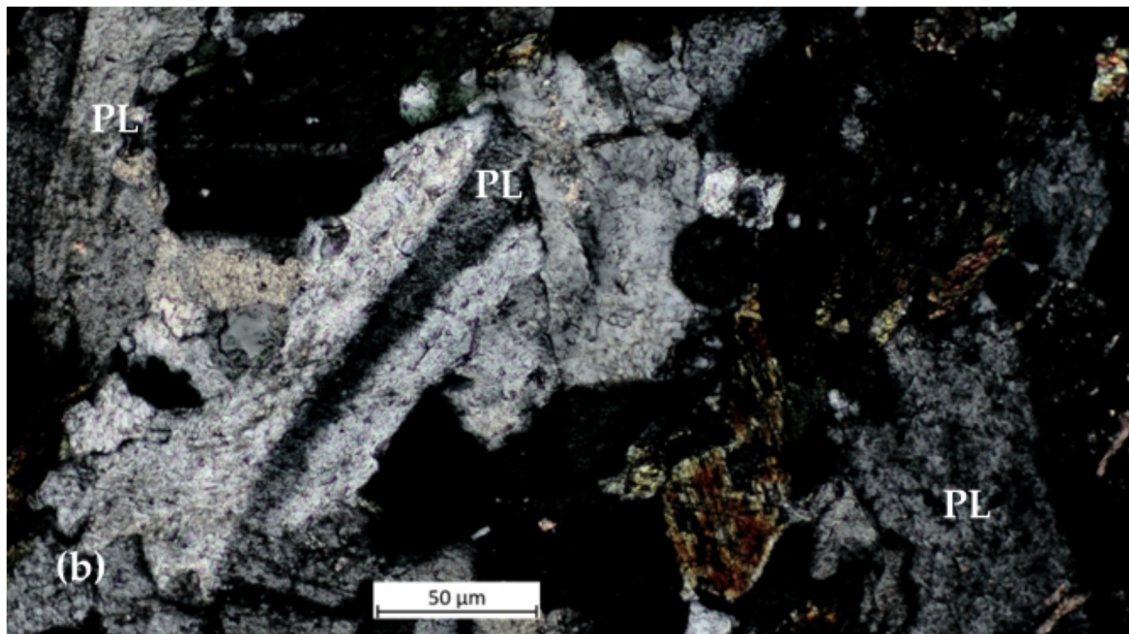
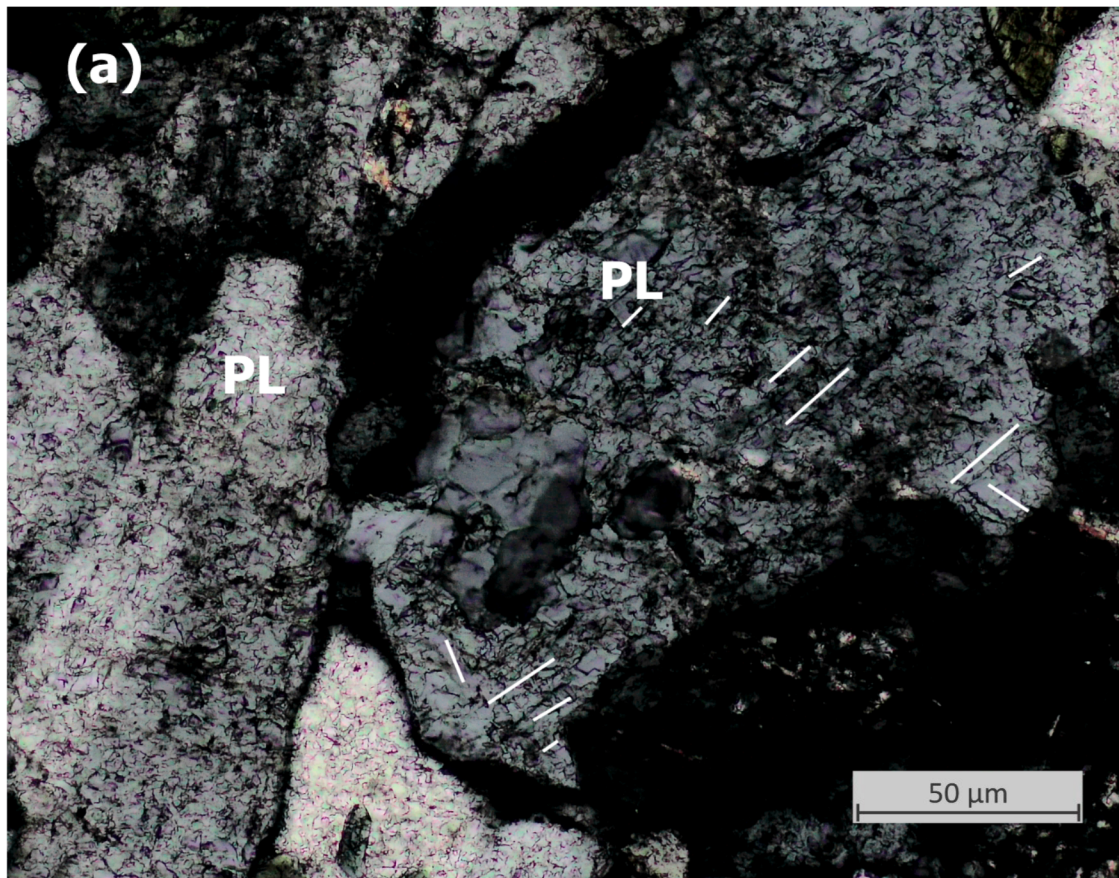
Supplementary File-S3-Fig.S1. (a) Photomicrograph in xpl showing multiple set of PFs in plagioclase grain. (b) Kink banding and planar fractures in plagioclase marked with white lines parallel to PF.





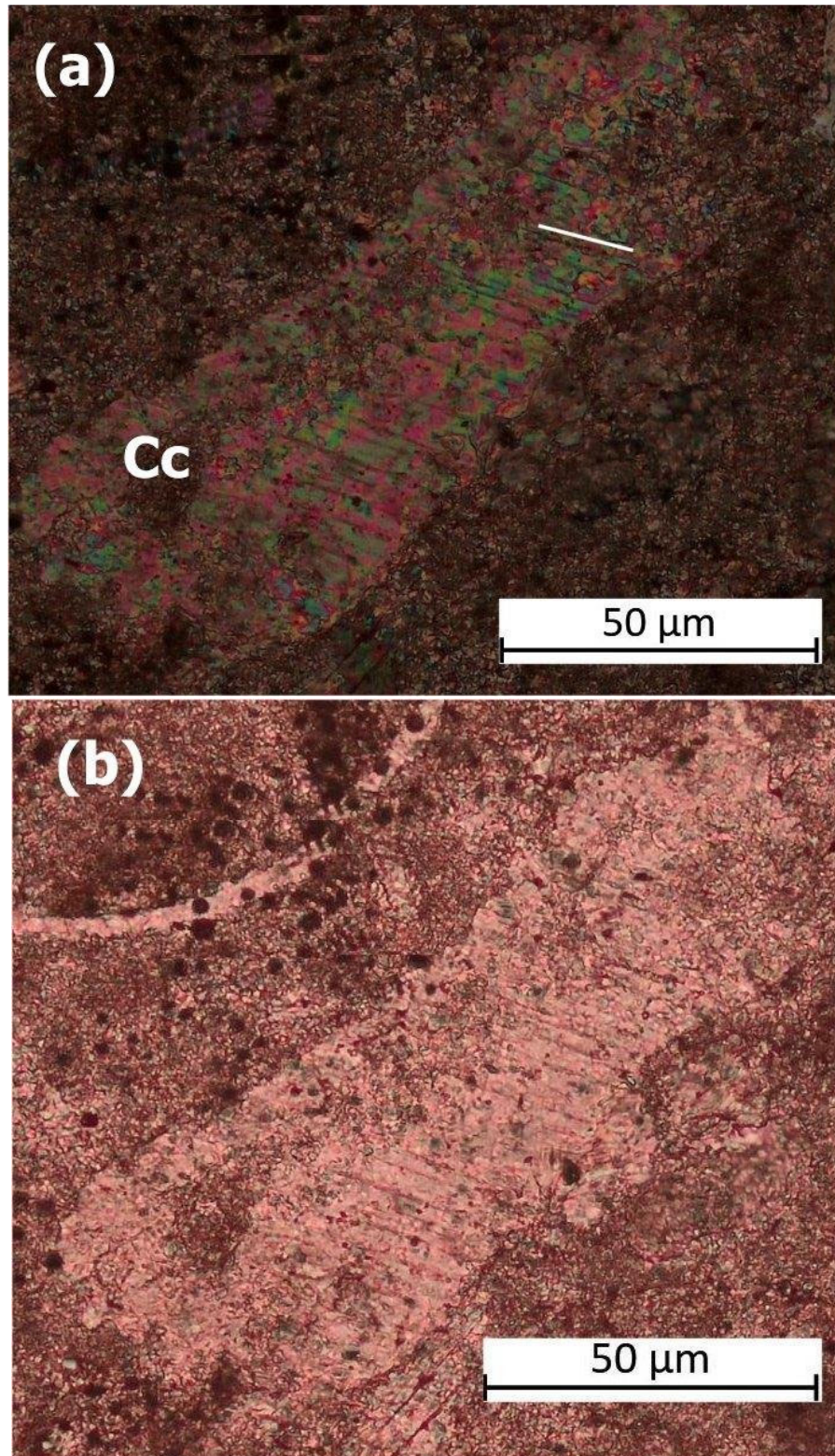
Supplementary File-S3-Fig.S2. (a) Photomicrograph in xpl showing PFs in quartz (Qz) and plagioclase (PL) grains. (b) Photomicrograph in xpl showing deformed twin lamellae and isotropization in plagioclase.





Supplementary File-S3. Fig.S3. (a) Photomicrograph showing PF in quartz (Qz), and (b) Deformation features (undulose extension and PF) in plagioclase (PL).





Supplementary File-S3. Fig.S4. (a) Photomicrograph in xpl (a) and ppl (b) showing planar fractures in calcite (Cc).