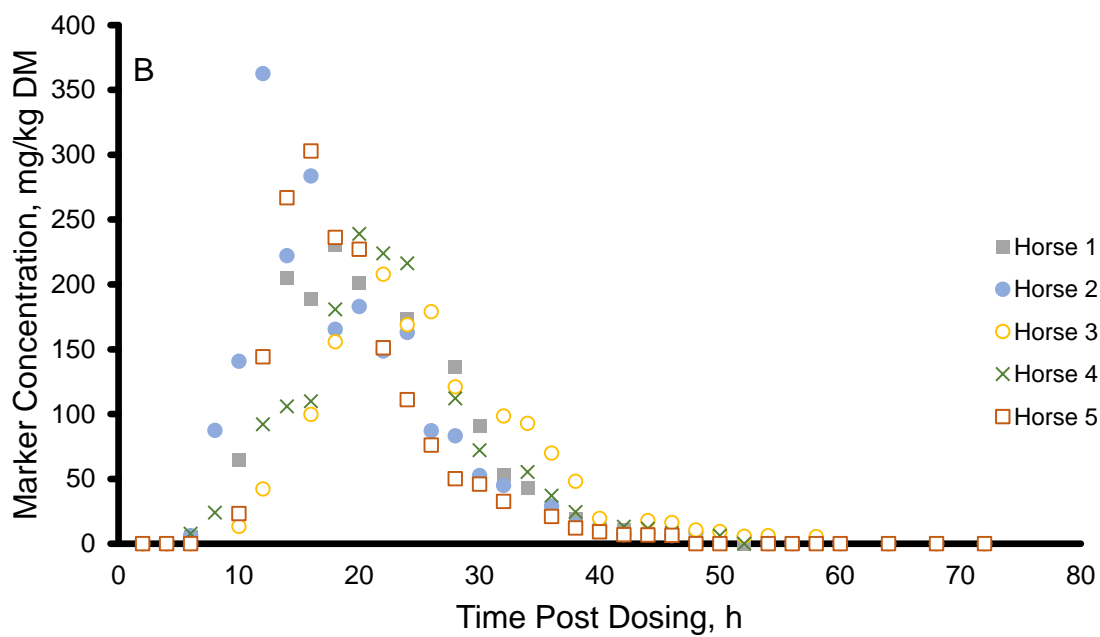
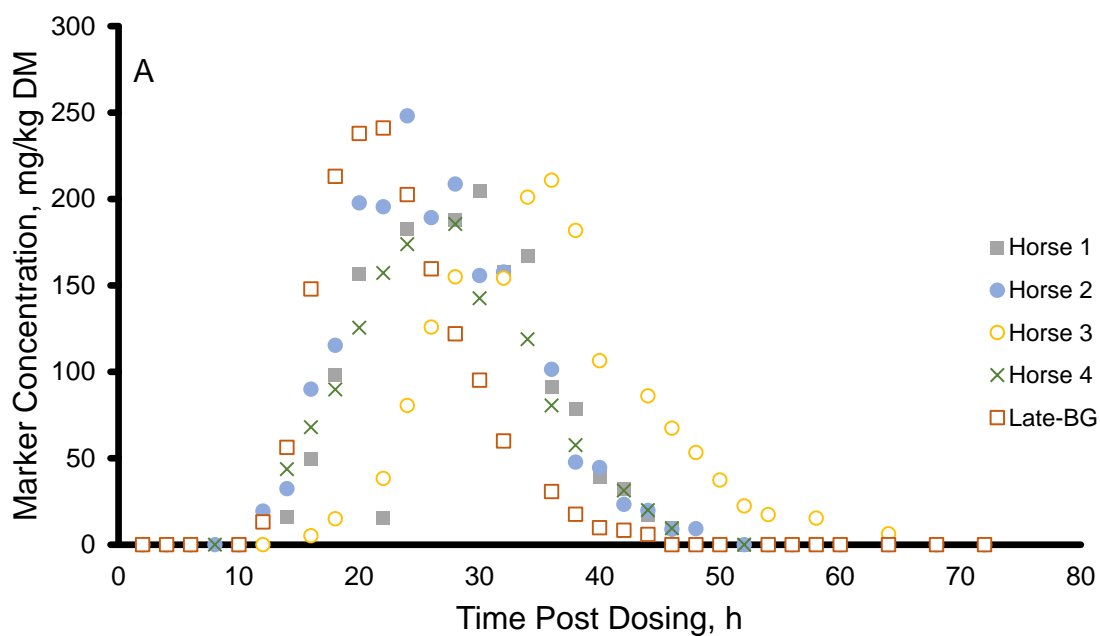
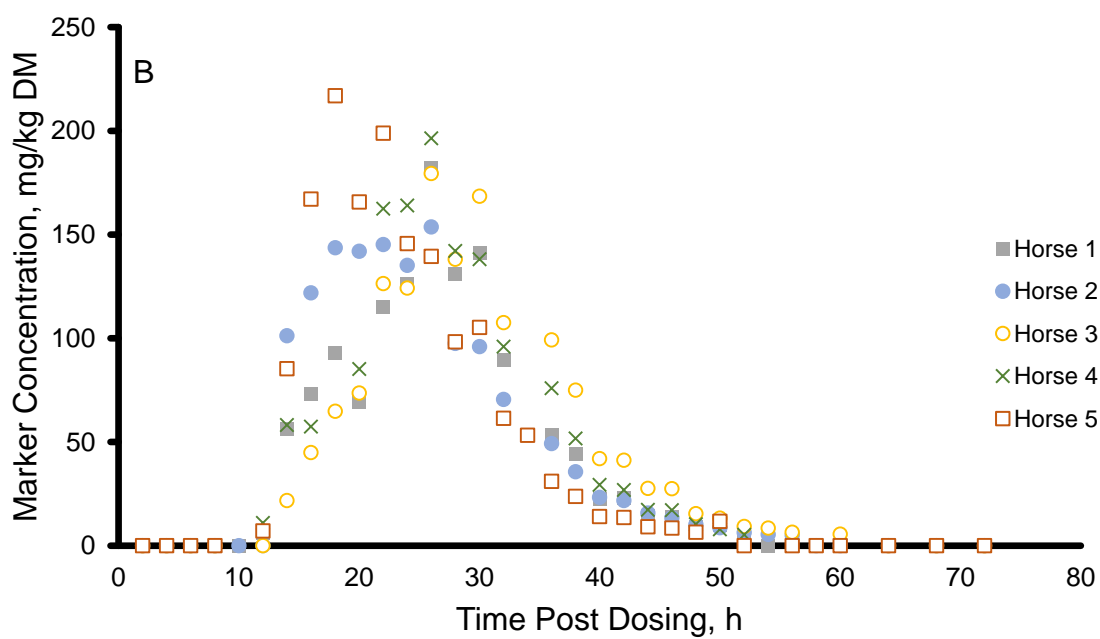
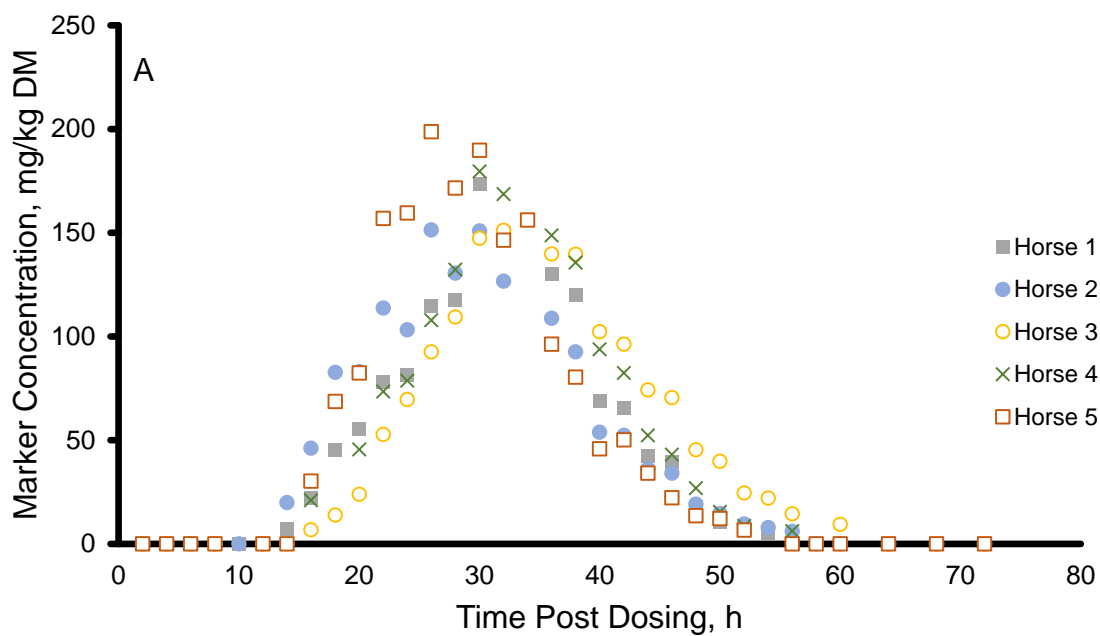


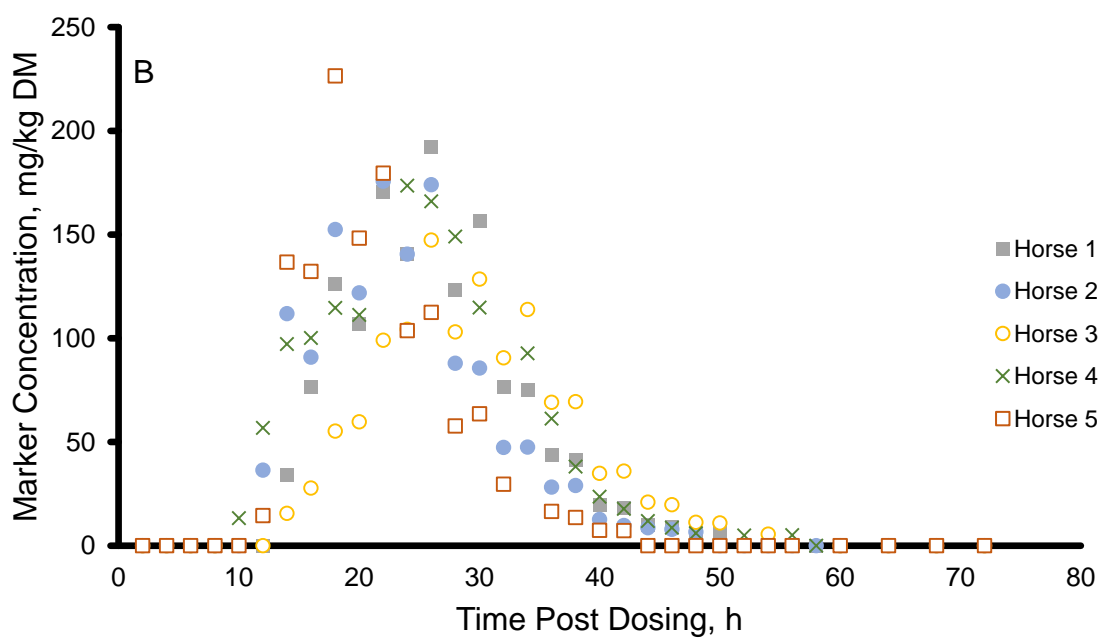
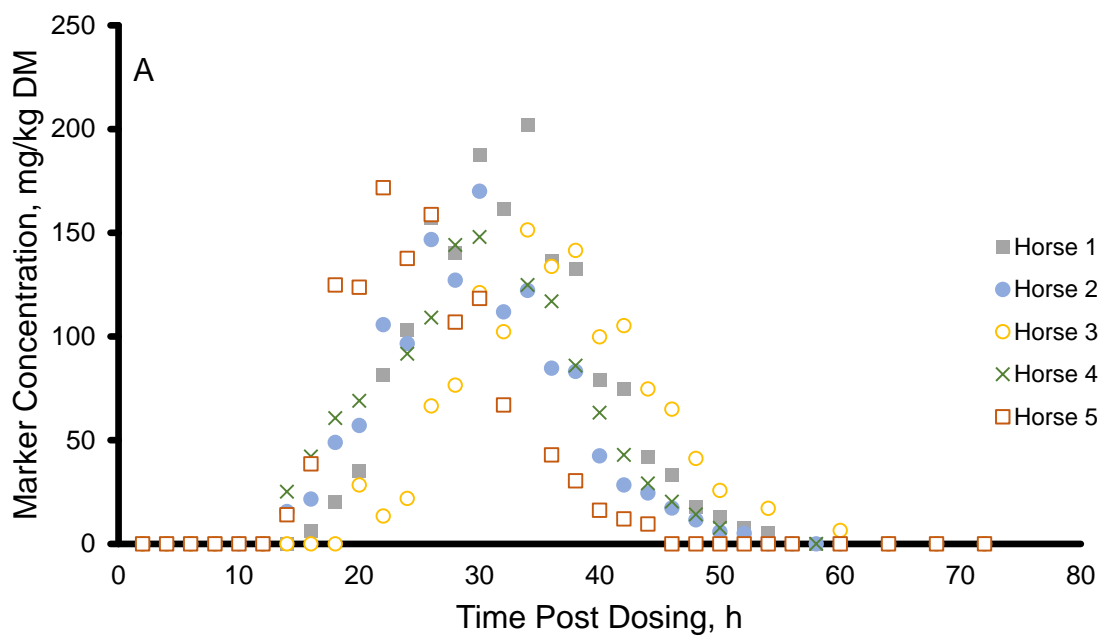
**Supplemental Figure 1.** Fecal marker excretion of (a) Yb and (b) Co after dosing external markers when horses were fed alfalfa hay.



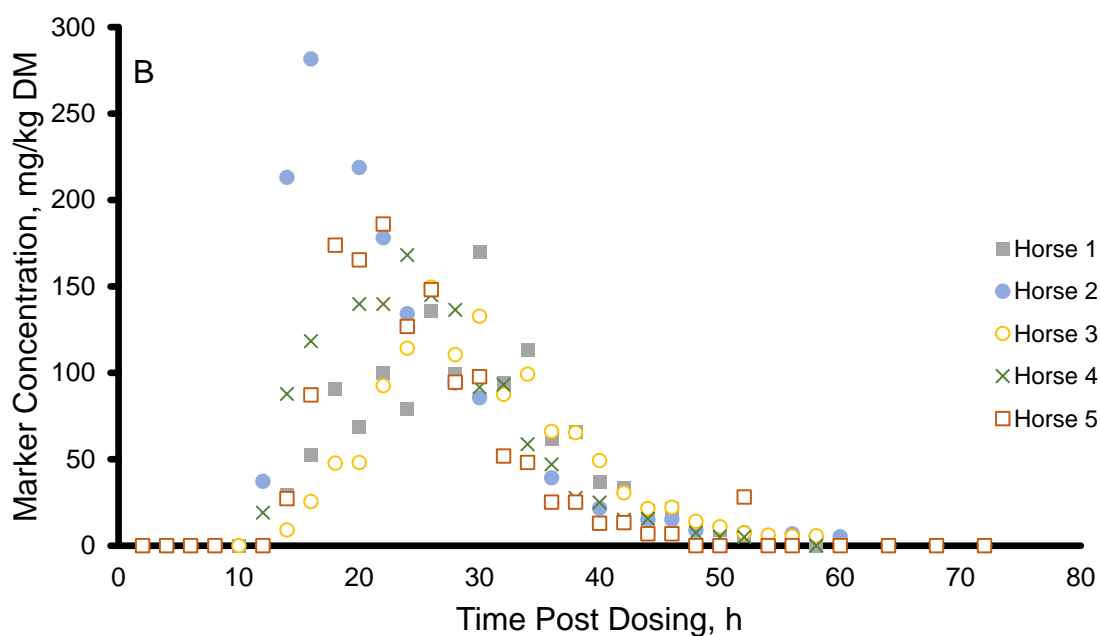
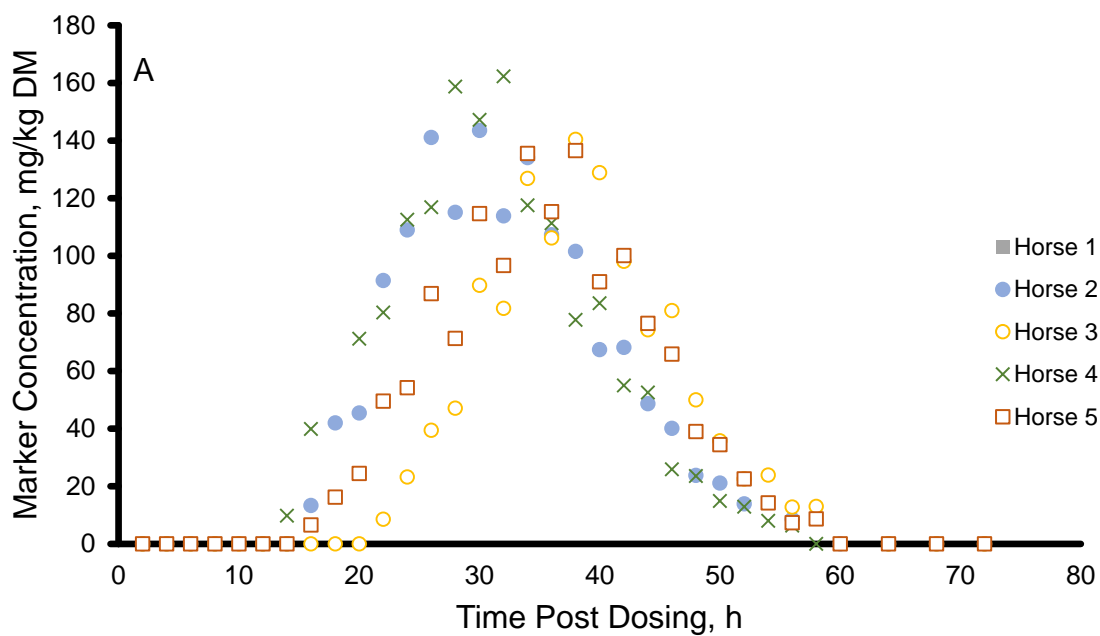
**Supplemental Figure 2.** Fecal marker excretion of (a) Yb and (b) Co after dosing external markers when horses were fed orchardgrass hay.



**Supplemental Figure 3.** Fecal marker excretion of (a) Yb and (b) Co after dosing external markers when horses were fed Coastal bermudagrass hay harvested at 4-wk of regrowth.



**Supplemental Figure 4.** Fecal marker excretion of (a) Yb and (b) Co after dosing external markers when horses were fed Coastal bermudagrass hay harvested at 8-wk of regrowth.



**Supplemental Figure 5.** Fecal marker excretion of (a) Yb and (b) Co after dosing external markers when horses were fed Coastal bermudagrass hay harvested at 8-wk of regrowth.