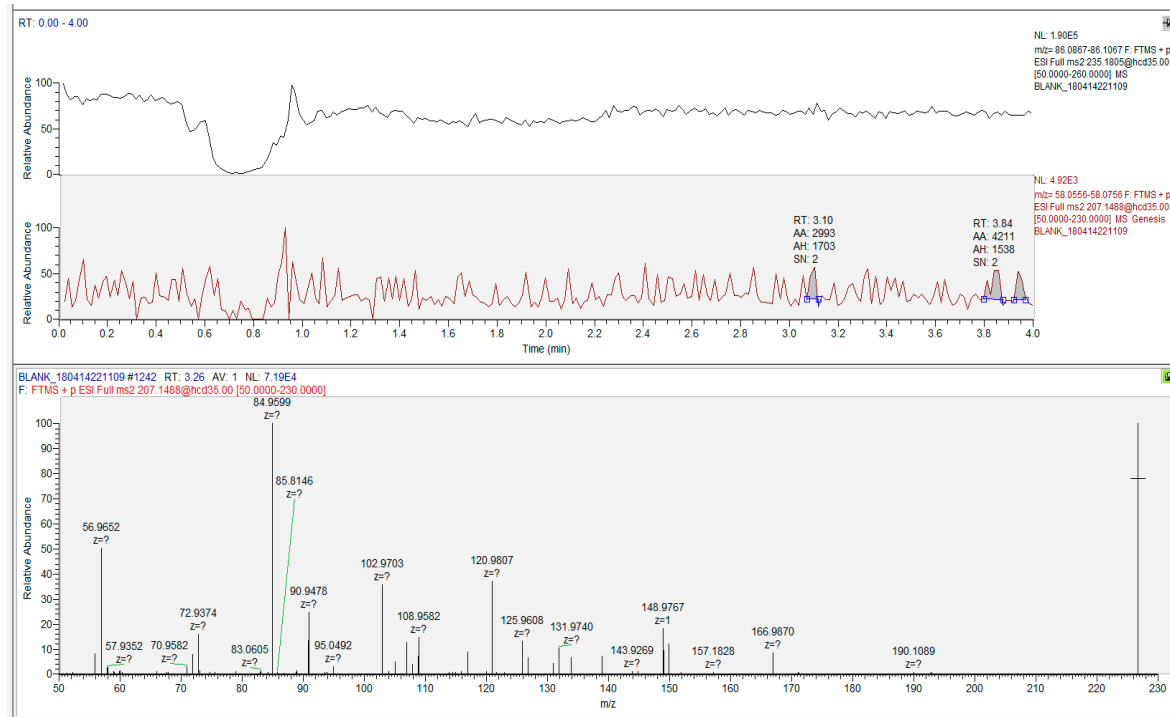
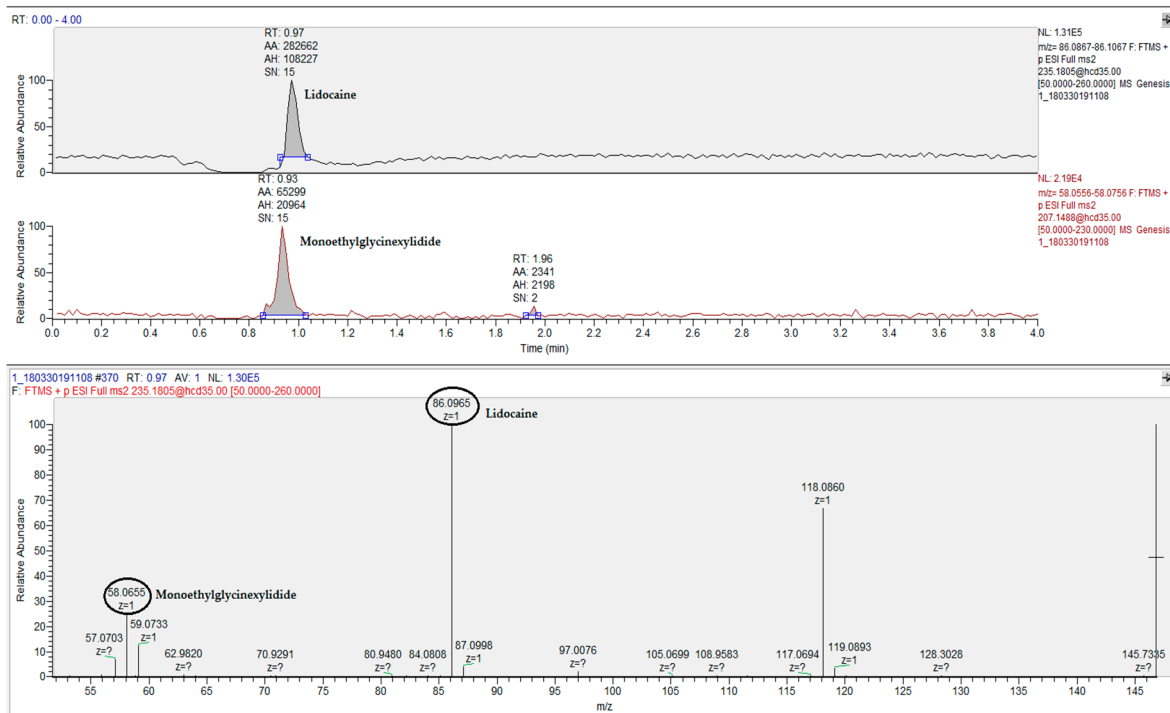


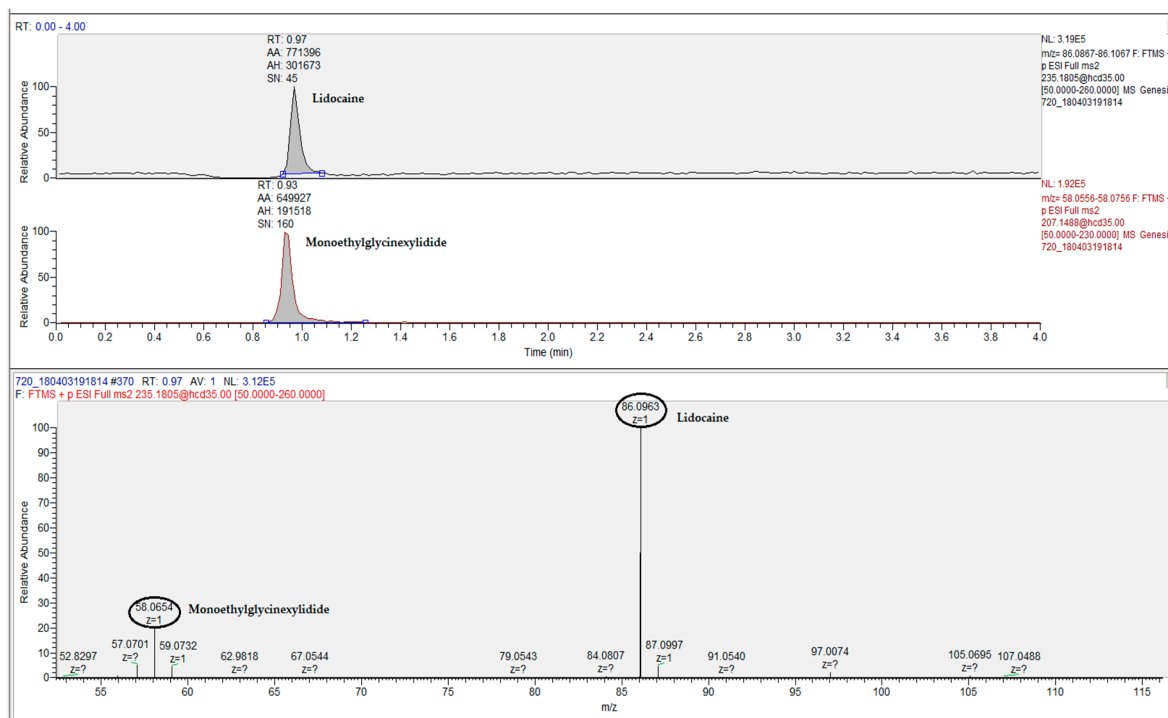
a.



b.

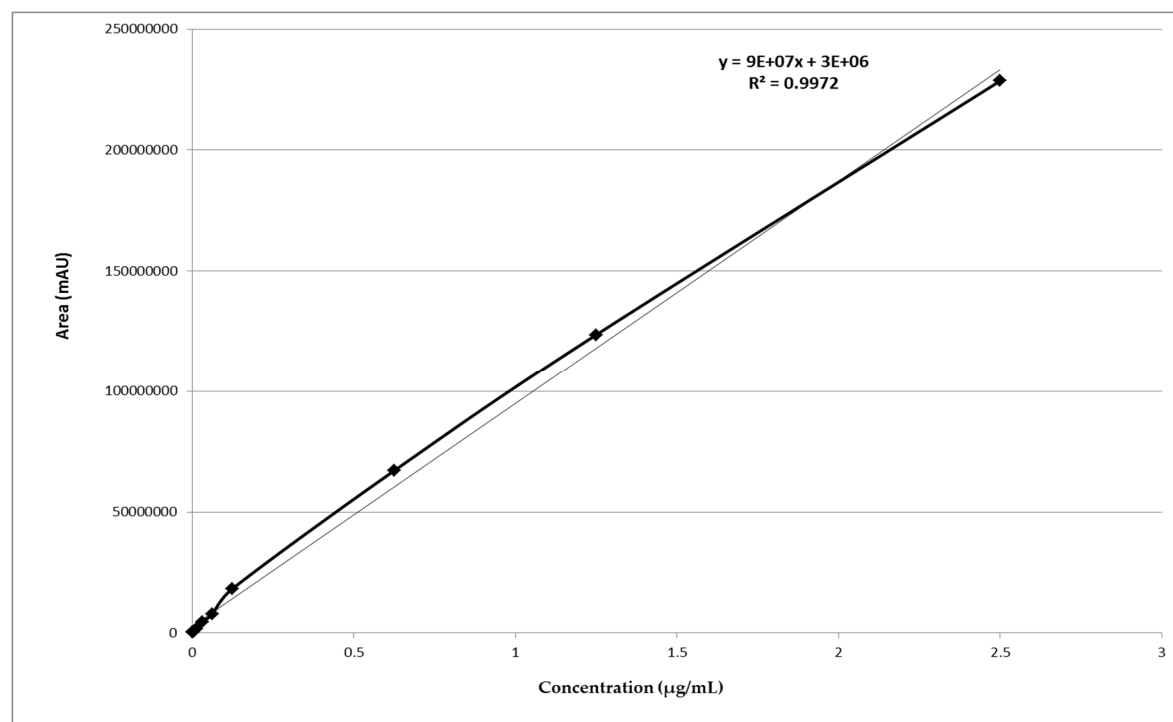


c.

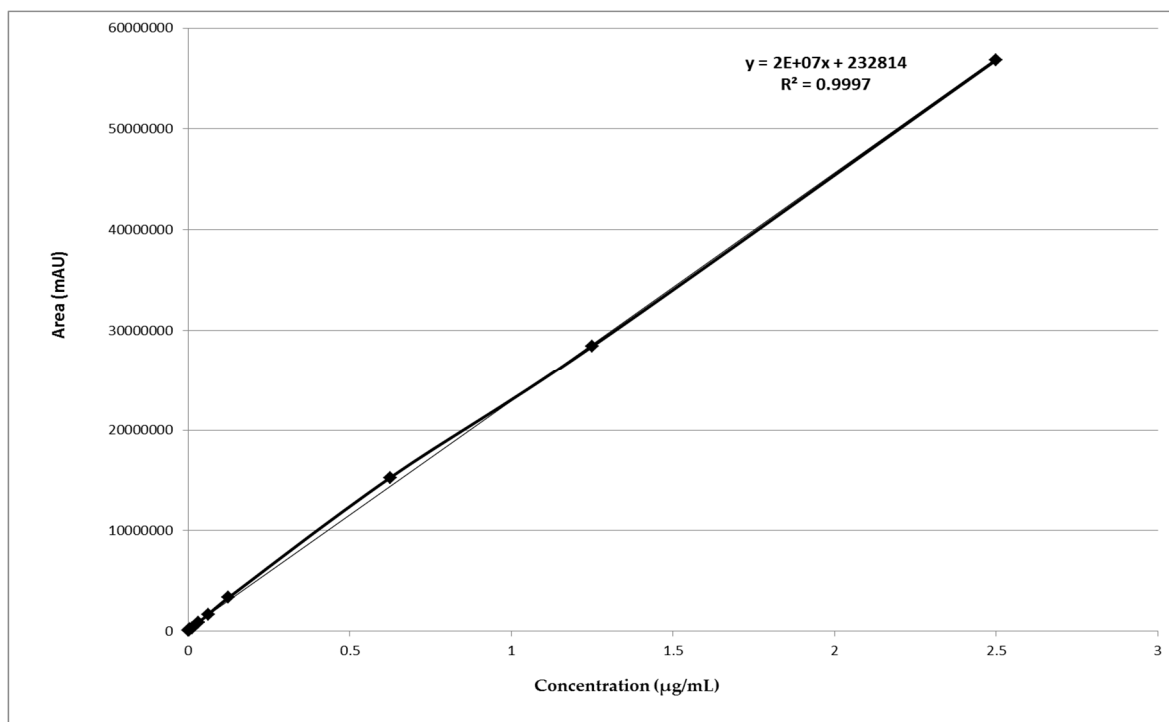


Supplementary Figure S1. Chromatograms and mass spectra (obtained in PRM mode) of (a) blank goat plasma, (b) blank plasma spiked with 0.00125 µg/mL of lidocaine and monoethylglycinexylidide, and (c) plasma from an experimental animal after cornual nerve block.

a.



b.



Supplementary Figure S2. Calibration curves (0.00125 – 2.50 µg/mL) of lidocaine (a) and monoethylglycinexylidide; (b) constructed by spiking pooled plasma from untreated goat kids.