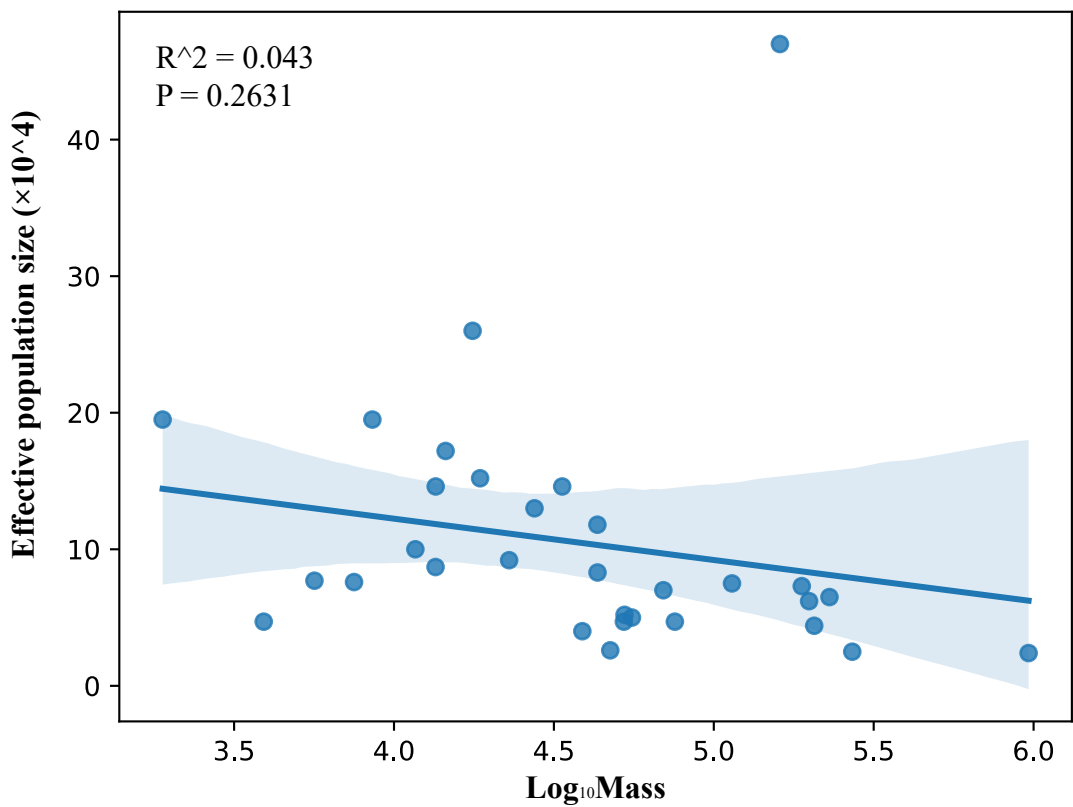
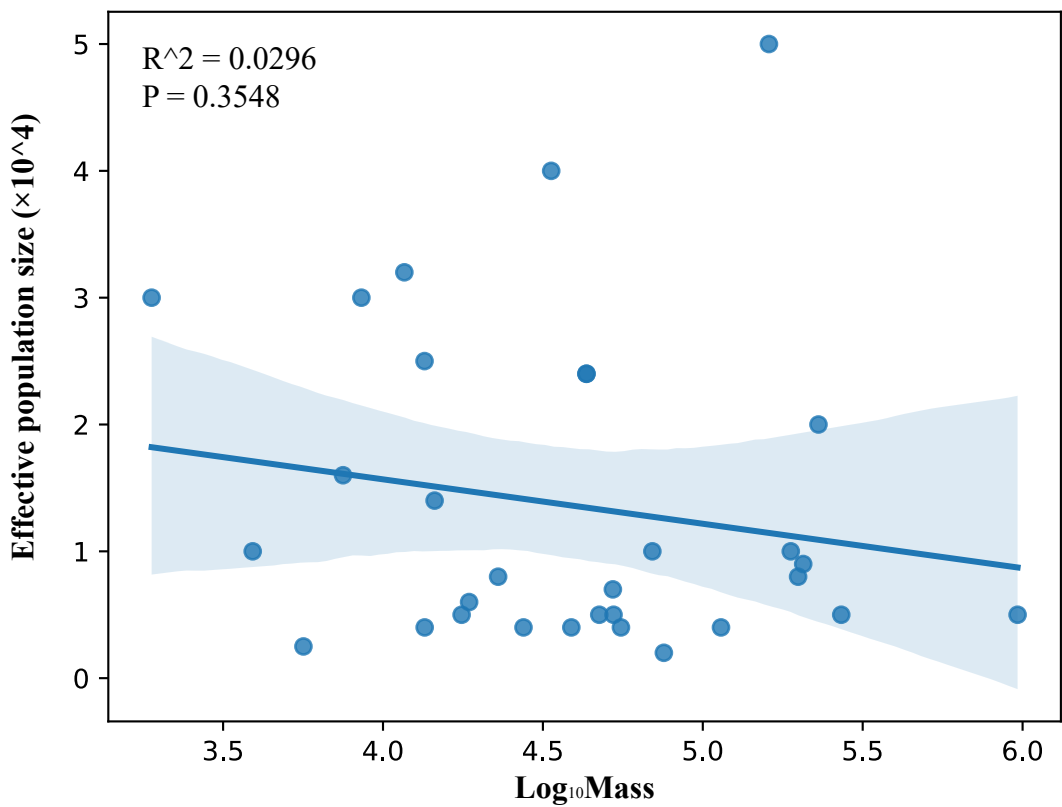


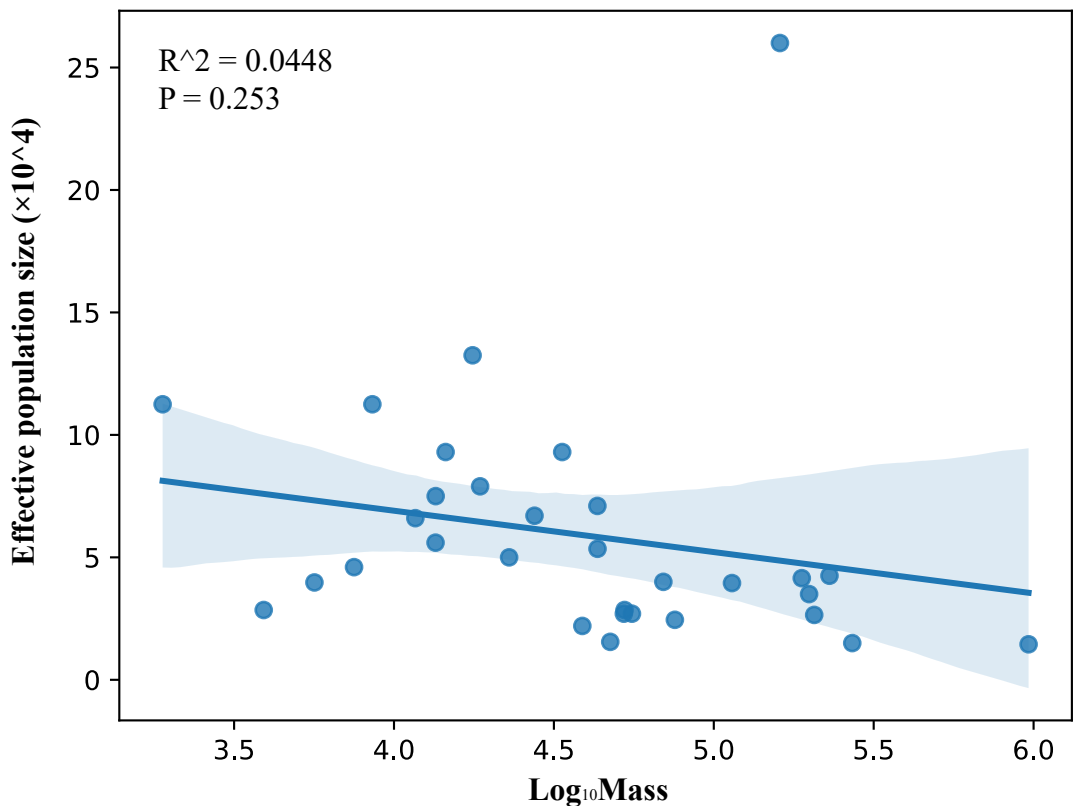
(a)



(b)



(c)



**Figure S1.** Effective population size ( $N_e$ ) exhibits no significant correlation with body mass. Based on Chen, et al. inferred the demographic history for 31 ruminant species by applying the pairwise sequentially Markovian coalescence model. (a) The maximum  $N_e$  over a period ranging from 1 million to 10 thousand years in the past; (b) The minimum  $N_e$  over a period ranging from 1 million to 10 thousand years in the past; (c) The average  $N_e$  over a period ranging from 1 million to 10 thousand years in the past.