

Figure S1. Feeding site of *Tropilaelaps mercedasae* on honey bee *Apis mellifera*. (A) Fresh integumental wounds (blue spots) and (B) scarred wounds (brown to blackspots) on prepupae.

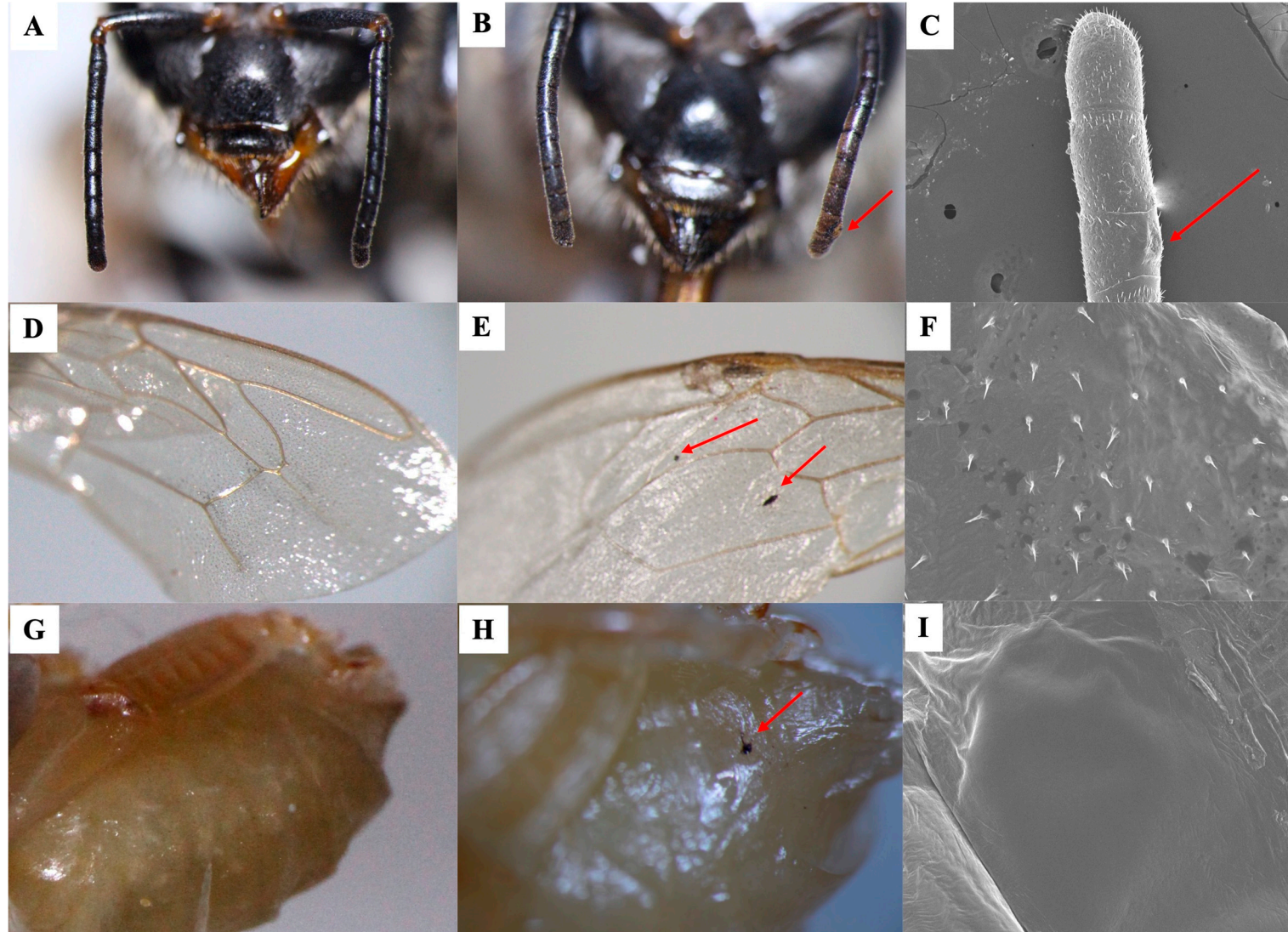


Figure S2. Photograph of feeding site caused by *Tropilaelaps mercedasae* on honey bee *Apis mellifera*. (A) antennae of an uninfested adult honey bee; (B) antennae of a crippled adult honey bee; (C) SEM picture of the antenna of a crippled adult honey bee; (D) the wing of the uninfested adult honey bee; (E) the wing of the crippled adult honey bee, (F) SEM picture of the wing of the crippled adult honey bee, (G) the abdomen of the uninfested tanned bodied pupa; (H) the abdomen of the infested tanned bodied pupa; and (I) SEM picture of the abdomen of the infested tanned bodied pupa.