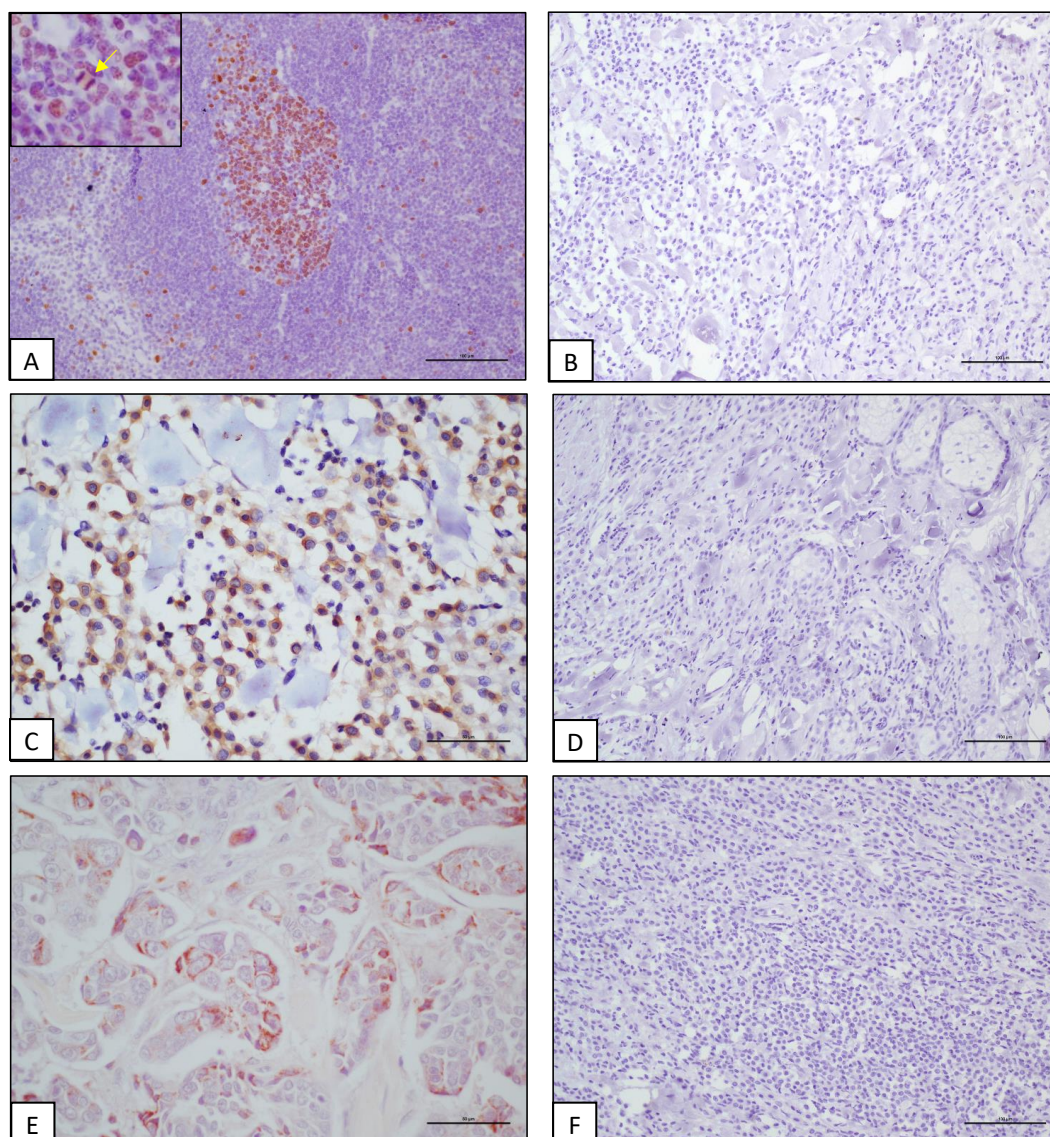


## Supplementary Materilas



**Figure S1.** (A) Canine lymph node, positive control for the anti-Ki67 antibody (mouse anti-human Ki-67, clone MIB-1, Dako, Glostrup, Denmark), inset: an immunolabelled mitosis (yellow arrow). IHC, EE counterstaining, bar= 100  $\mu$ m (B) Canine MCT, negative control for the anti-Ki67 antibody (mouse anti-human Ki-67 antigen, clone MIB-1, Dako, Glostrup, Denmark), IHC, EE counterstaining, bar= 100  $\mu$ m (C) Canine MCT, positive control for the anti- CD117/KIT antibody (rabbit polyclonal anti-human CD117/KIT Dako, Glostrup, Denmark), IHC, EE counterstaining, bar= 50  $\mu$ m (D) Canine MCT, negative control for the anti-CD117/KIT antibody (rabbit polyclonal anti-human CD117/KIT Dako, Glostrup, Denmark), IHC, EE counterstaining, bar= 100  $\mu$ m (E) Canine mammary gland tumor, positive control for the anti-VEGF antibody (rabbit polyclonal anti-VEGF, A-20, Santa Cruz Biotechnology, Texas, USA). IHC, EE counterstaining, bar= 50  $\mu$ m (F) Canine MCT, negative control for the anti-VEGF antibody (A-20, Santa Cruz Biotechnology, Texas, USA), IHC, EE counterstaining, bar= 100  $\mu$ m.