

Figure S1. Electrophoretic separation of restriction fragments resulting from digestion with the *RsaI* restriction enzyme (ACRS-PCR; bovine *JAK2/e16/RsaI* polymorphism); lane 1 (M) - mass standard pUC19 DNA/*MspI*; lane 2 - AG genotype; lane 3 - AA genotype; lane 4 - GG genotype.

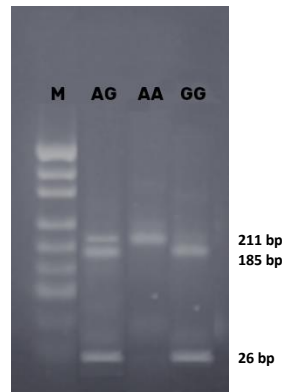


Figure S2. Electrophoretic separation of restriction fragments resulting from digestion with the *HaeIII* restriction enzyme (ACRS-PCR; bovine *JAK2/e23/HaeIII* polymorphism); lane 1 (M) - mass standard pUC19 DNA/*MspI*; lane 2 - AG genotype; lane 3 - AA genotype; lane 4 - GG genotype.

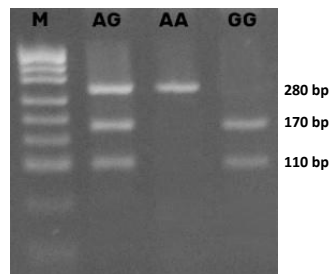


Figure S3. Electrophoretic separation of restriction fragments resulting from digestion with the *EarI* restriction enzyme (PCR-RFLP; ovine *JAK2/e6/EarI* polymorphic site); lane 1 (M) - mass standard pUC19 DNA/*MspI*; lane 2 - AG genotype; lane 3 - AA genotype; lane 4 - GG genotype.

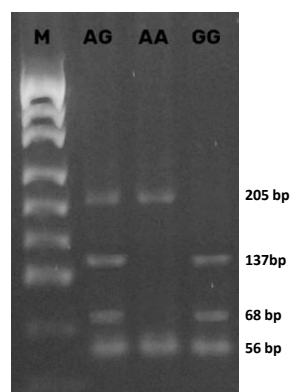


Figure S4. Electrophoretic separation of restriction fragments resulting from digestion with the *Hpy188III* restriction enzyme (PCR-RFLP; ovine *JAK2/e24/Hpy188III* polymorphism); lane 1 (M) - mass standard pUC19 DNA/*MspI*; lane 2 - AG genotype; lane 3 - AA genotype; lane 4 - GG genotype.