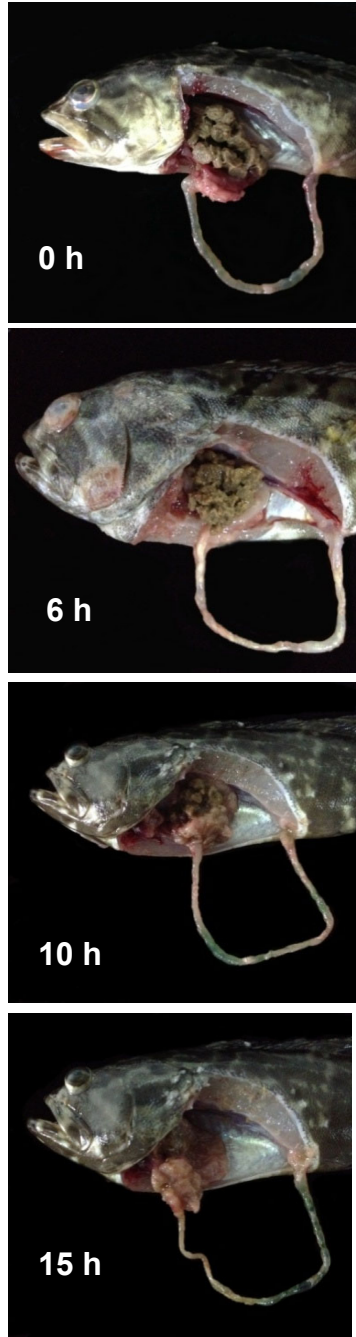
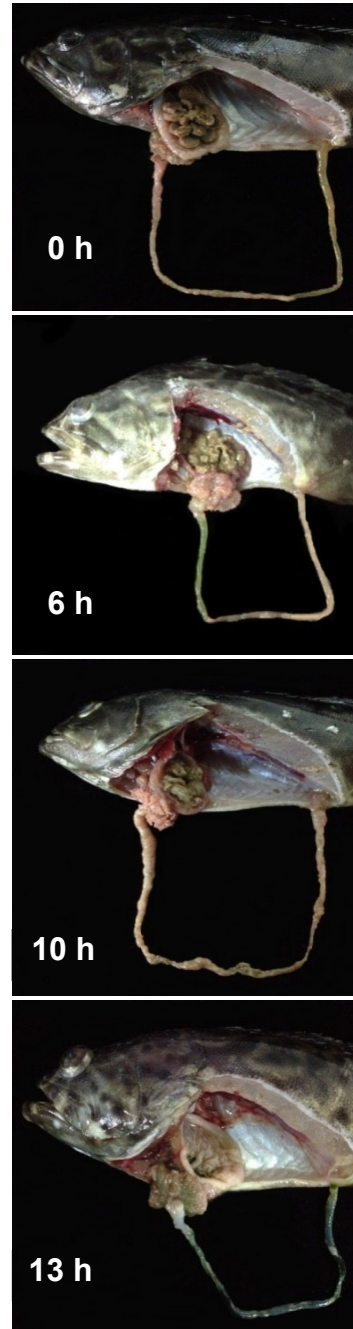


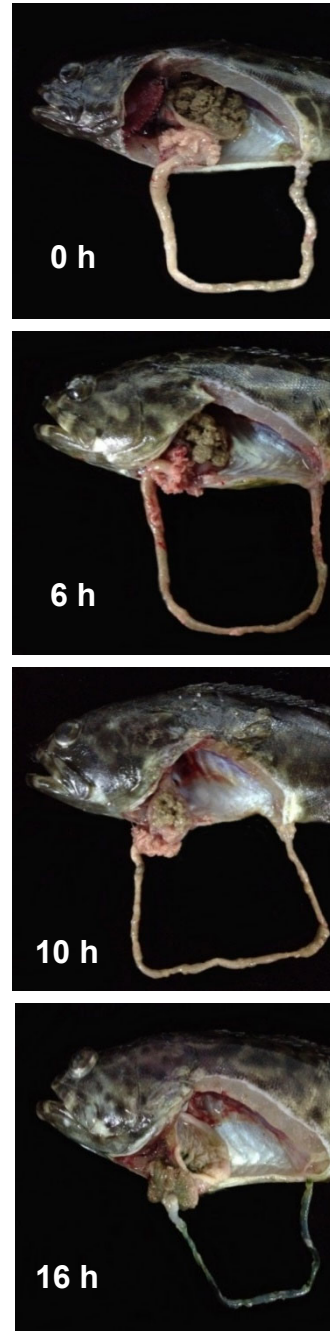
(a) 28 °C



(b) 30 °C



(c) 32 °C



(d) 34 °C

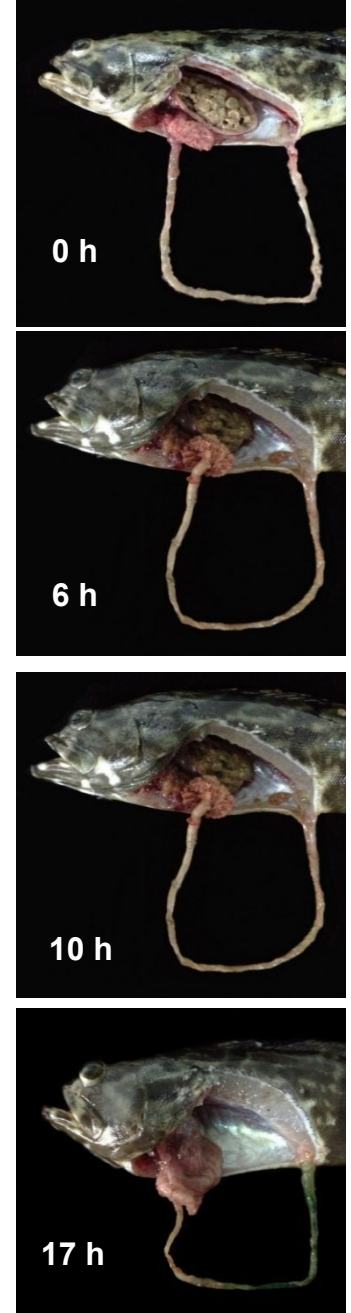


Figure S1. Movement of pellet feed along the alimentary tract of the adult hybrid Sabah grouper by stomach dissection at (a) 28 °C, (b) 30 °C, (c) 32 °C, and (d) 34 °C. Five fish were used for each sampling point and temperature.