

Immunolocalization of Nesfatin-1 in the gastrointestinal tract of the common bottlenose dolphin *Tursiops truncatus*

Elena De Felice^{†1*}, Claudia Gatta^{†2}, Daniela Giaquinto², Federica Fioretto¹, Lucianna Maruccio², Danila d'Angelo², Paola Scocco¹, Paolo de Girolamo² and Livia D'Angelo²

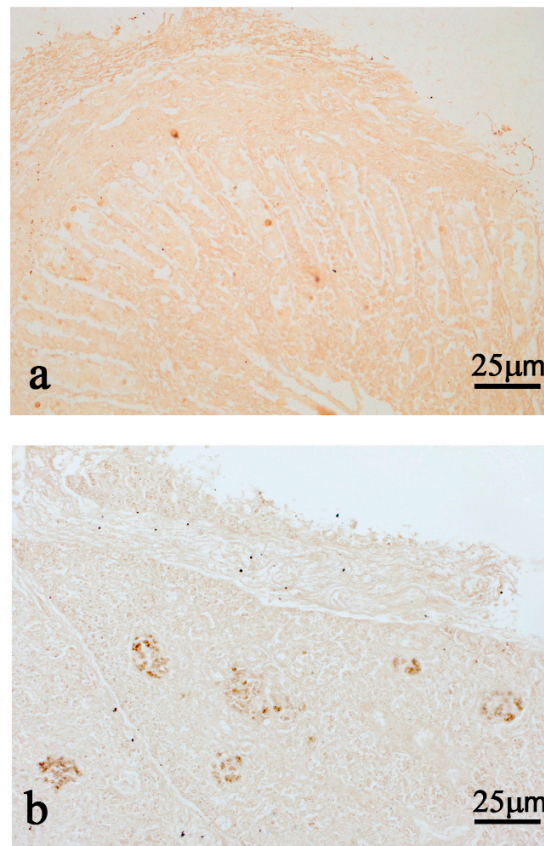


Figure S1. Immunohistochemistry negative and positive controls of anti-Nesf-1 in *Tursiops truncatus*. Negative control of intestine (a). Positive control of pancreas, showing Nesf-1 positive immunoreactivity in pancreatic islet (b).

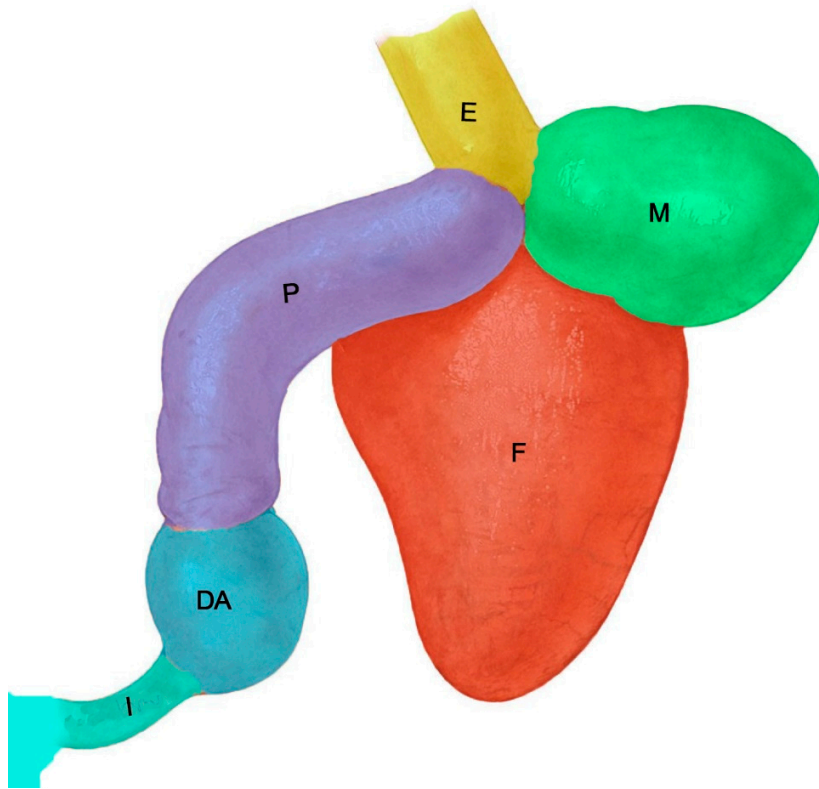


Figure S2. Schematic drawing of the gastrointestinal tract of the *Tursiops truncatus*: (E) esophagus; (F) forestomach or first chamber; (M) main stomach or second chamber; (P) pyloric stomach or third chamber, (DA) duodenal ampulla and (I) intestine.