

Supplementary Materials:

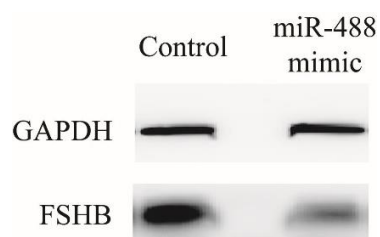


Figure S1. FSHB protein expression after transfection with miR-488 mimic.

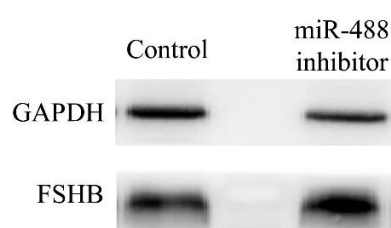


Figure S2. FSHB protein expression after transfection with miR-488 inhibitor.

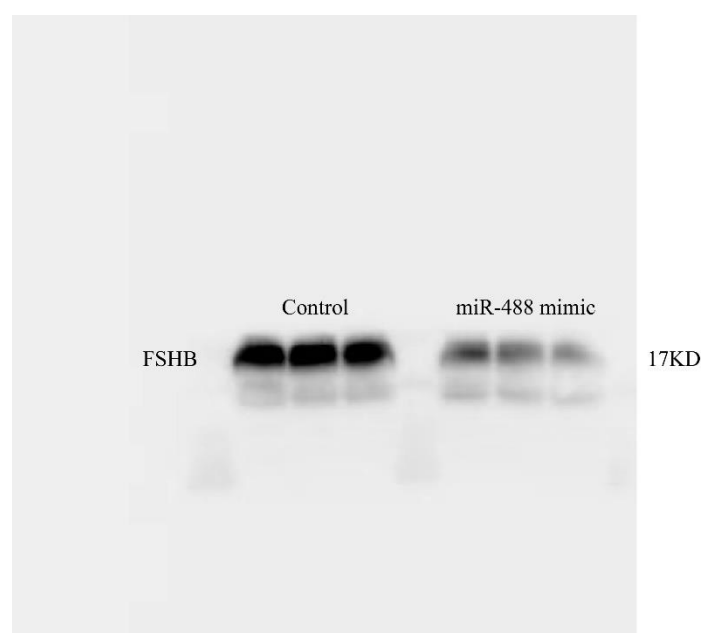


Figure S3. Original figure of FSHB protein after transfection with miR-488 mimic.

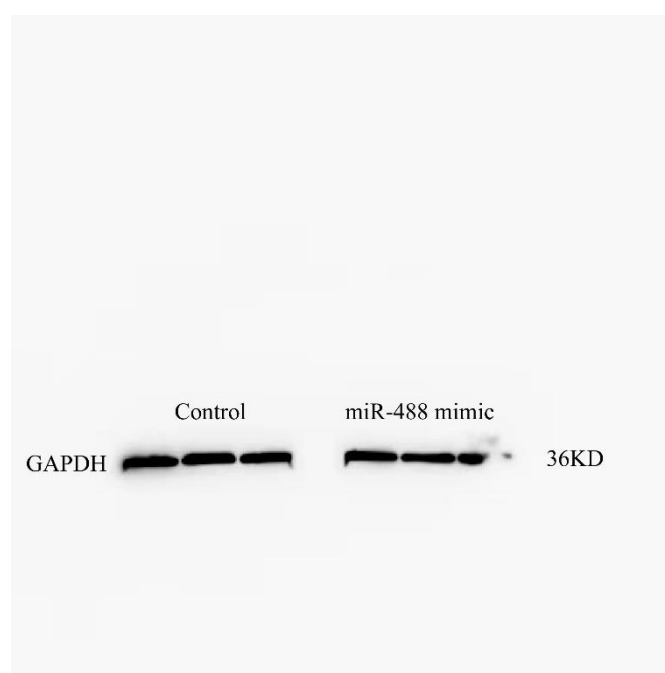


Figure S4. Original figure of GAPDH protein after transfection with miR-488 mimic.jpg.

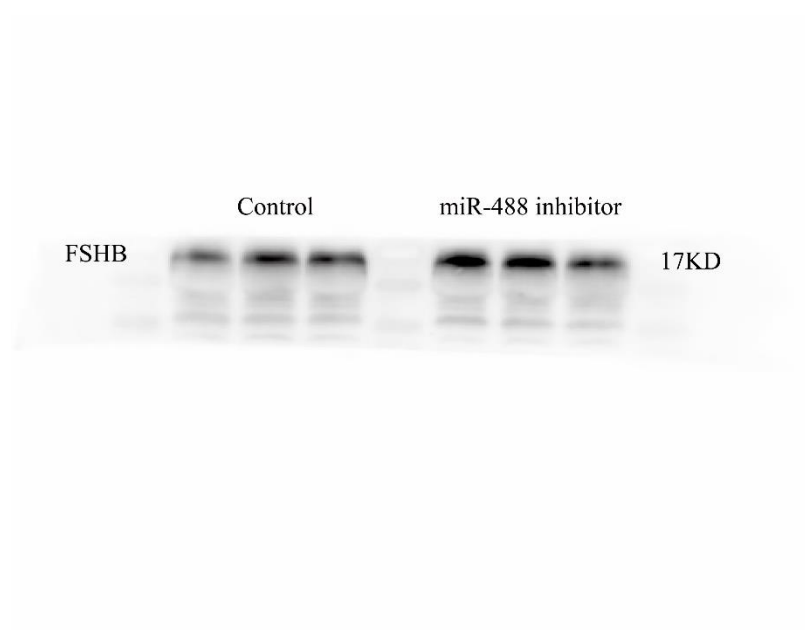


Figure S5. Original figure of FSHB protein after transfection with miR-488 inhibitor.

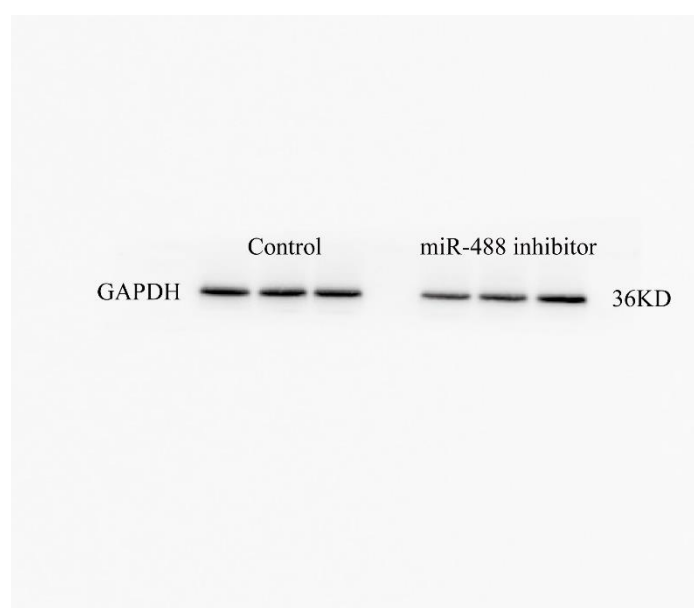


Figure S6. Original figure of GAPDH protein after transfection with miR-488 inhibitor.

Table S1. Raw data obtained from grayscale analysis.

	GAPDH	FSHB	FSHB/GAPDH
control	32523.945	14918.137	0.458681657
miR-488 mimic	27432.744	10786.472	0.393196977
	GAPDH	FSHB	FSHB/GAPDH
control	30087.116	28258.693	0.939229037
miR-488 inhibitor	29359.572	29806.288	1.015215344