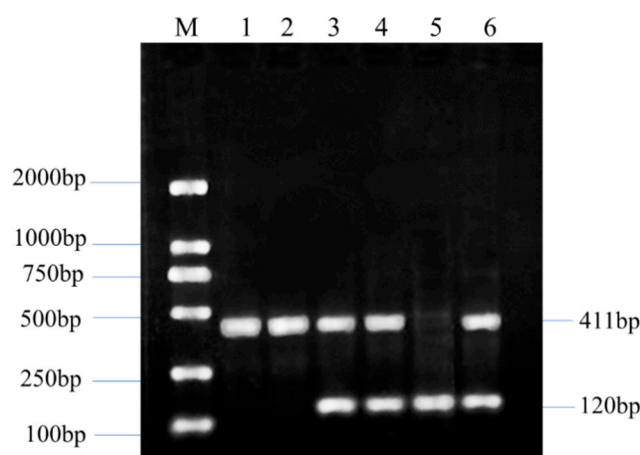


## Supplementary



**Supplementary Figure 1.** Genotyping for the *VRTN* gene G.20311\_20312ins291 mutations. Lanes 1 to 6 showed PCR products. M: 2000bp DNA Marker; 1 and 2: ins/ins genotype; 3,4 and 6: ins/del genotype; 5: del/del genotype.

**Table S1.** Correlation analysis between batch/sex/age and RIB/carcass traits of Suhuai fattening pigs.

Traits	$p_{\text{batch}}$	$p_{\text{sex}}$	$p_{\text{age}}$
RIB	0.3341	0.4585	0.4030
CSL	0.0046	0.0493	0.0030
CDL	0.0000	0.0034	0.0014
CWT	0.0000	0.0000	0.0012

Note: RIB, number of ribs; CSL, carcass straight length; CDL, carcass diagonal length; CWT, carcass weight;  $p_{\text{batch}}$ ,  $p_{\text{sex}}$  and  $p_{\text{age}}$  represent the  $p$ -value of the correlation between RIB/carcass traits and batch/sex/age of Suhuai fattening pigs, respectively.

**Table S2.** Correlation analysis between batch/sex/age and body size traits of Suhuai gilts.

Traits	$p_{\text{batch}}$	$p_{\text{sex}}$	$p_{\text{age}}$
CC	0.0000	0.0000	0.7942
AC	0.0000	0.0029	0.5820
CBC	0.0000	0.0000	0.5415
RC	0.0000	0.0000	0.1380
BL	0.0000	0.0000	0.9559
BW	0.0000	0.0018	0.3504

Note: CC, chest circumference; AC, abdominal circumference; CBC, cannon bone circumference; RC, rump circumference; BL, body length; BW, body weight;  $p_{\text{batch}}$ ,  $p_{\text{sex}}$  and  $p_{\text{age}}$  represent the  $p$ -value of the correlation between body size traits and batch/sex/age of Suhuai gilts, respectively.