

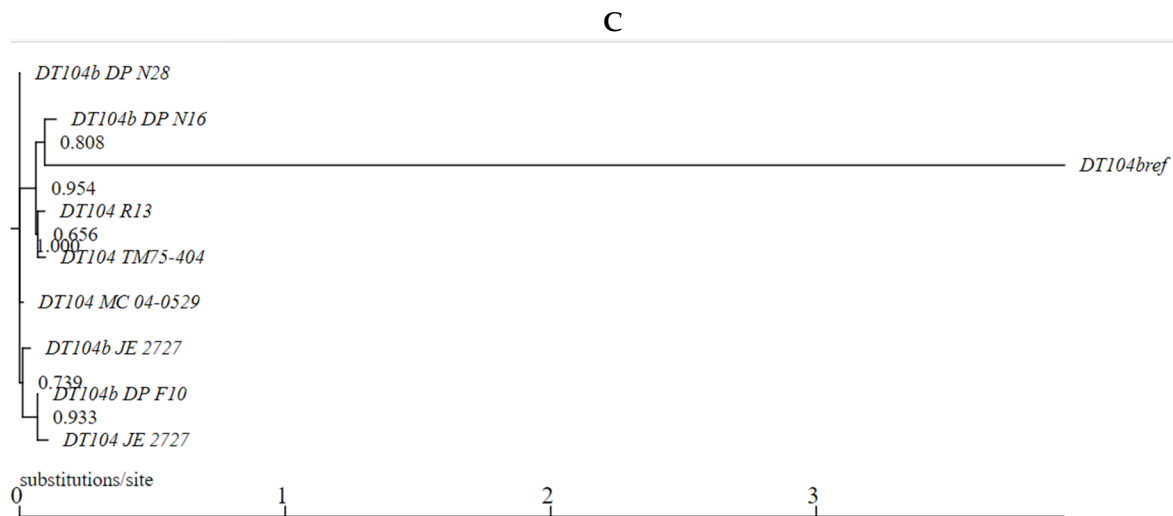
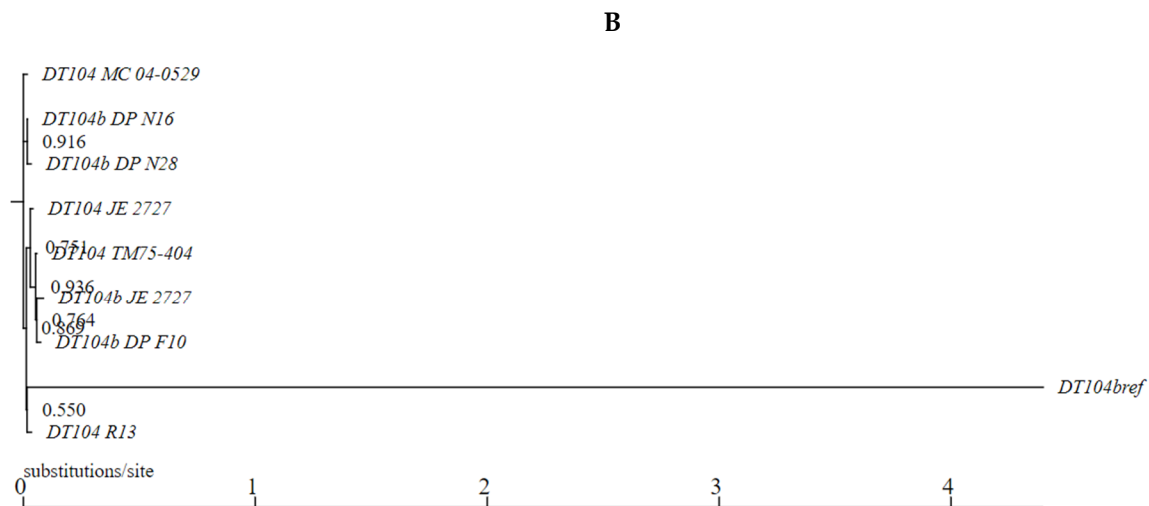
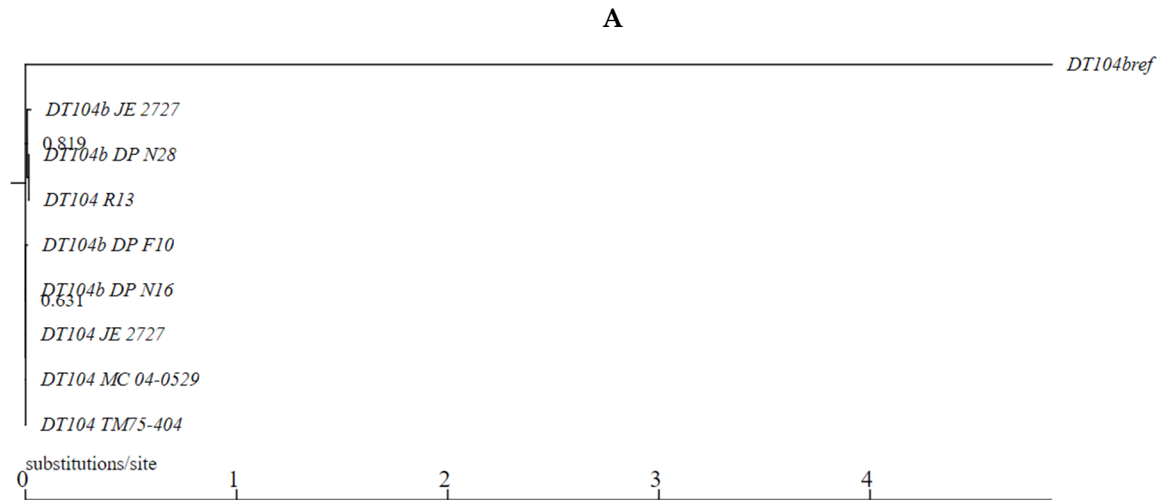
Supplementary Table S1. WGS-based identification of antimicrobial resistance determinants.

Strain ID	Phage Type	Resistance determinants
DP_F10	DT104b	<i>aac(6')-Iaa</i> <i>aadA2b</i> <i>sul1</i> <i>tet(G)</i> <i>floR</i> <i>blaCARB-2</i>
		Amikacin, Tobramycin Streptomycin Sulfamethoxazole Tetracycline Chloramphenicol Ampicillin
DP_N16	DT104b	<i>aac(6')-Iaa</i> <i>aadA2b, aph(6)-Id, aph(3'')-Ib</i> <i>sul1, sul2</i> <i>tet(G)</i> <i>floR</i> <i>blaCARB-2</i> <i>dfrA14</i>
		Amikacin, Tobramycin Streptomycin Sulfamethoxazole Tetracycline Chloramphenicol Ampicillin Trimethoprim
DP_N28	DT104b	<i>aac(6')-Iaa</i> <i>aadA2b, aph(6)-Id, aph(3'')-Ib</i> <i>sul1, sul2</i> <i>tet(G)</i> <i>floR</i> <i>blaCARB-2</i> <i>dfrA14</i>
		Amikacin, Tobramycin Streptomycin sulfamethoxazole Tetracycline Chloramphenicol Ampicillin Trimethoprim
JE_2727	DT104b	<i>aac(6')-Iaa</i> <i>aadA2b</i> <i>sul1</i> <i>tet(G)</i> <i>floR</i> <i>blaCARB-2</i>
		Amikacin, Tobramycin Streptomycin Sulfamethoxazole Tetracycline Chloramphenicol Ampicillin
DT104b ref.	DT104b	<i>aac(6')-Iaa</i>
		Amikacin, Tobramycin
JM_04.26	DT104	<i>sul1</i> <i>aadA2b</i> <i>aac(6')-Iaa</i>
		Sulfamethoxazole Streptomycin Amikacin, Tobramycin
MC_04-0529	DT104	<i>aadA2b</i> <i>aac(6')-Iaa</i> <i>sul1</i> <i>tet(G)</i> <i>floR</i> <i>blaCARB-2</i>
		Streptomycin Amikacin, Tobramycin Sulfamethoxazole Tetracycline Chloramphenicol Ampicillin
R13	DT104	<i>aac(6')-Iaa</i> <i>aadA2b</i> <i>sul1</i> <i>tet(G)</i> <i>floR</i> <i>blaCARB-2</i>
		Amikacin, Tobramycin Streptomycin Sulfamethoxazole Tetracycline Chloramphenicol Ampicillin
TM75-404	DT104	<i>aac(6')-Iaa</i>
		Amikacin, Tobramycin
DT104 ref.	DT104	<i>aadA2b</i> <i>aac(6')-Iaa</i> <i>sul1</i> <i>tet(G)</i> <i>floR</i> <i>blaCARB-2</i>
		Streptomycin Amikacin, Tobramycin Sulfamethoxazole Tetracycline Chloramphenicol Ampicillin
LT2	DT4	<i>aac(6')-Iaa</i>
		Amikacin, Tobramycin

Supplementary Table S2. Distribution of potential genes coding for phage receptors among all strains of DT104 and DT104b

[illegible]

Supplementary Figure S1. (A) ML phylogenetic tree of *Salmonella* Typhimurium DT104 and DT104b strains based on SNPs of prophage Salmon_118970_sal3; (B) ML phylogenetic tree of *Salmonella* Typhimurium DT104 and DT104b strains based on SNPs of prophage Salmon_ST64B; (C) ML phylogenetic tree of *Salmonella* Typhimurium DT104 and DT104b strains based on SNPs of prophage Gifsy-2; (D) ML phylogenetic tree of *Salmonella* Typhimurium DT104 and DT104b strains based on SNPs of prophage Gifsy-1.



D

