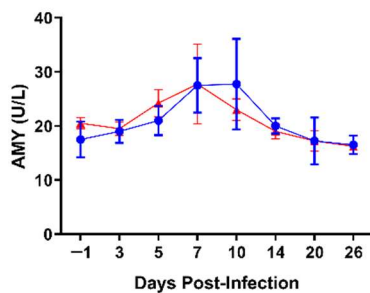
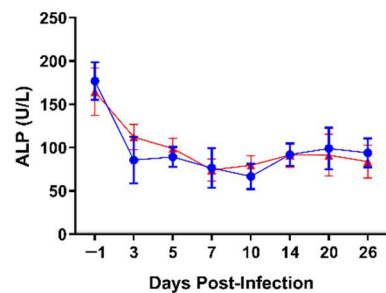


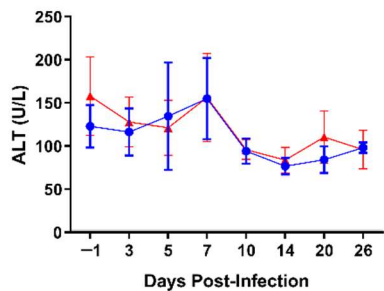
(a)



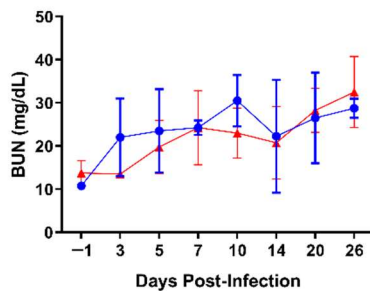
(b)



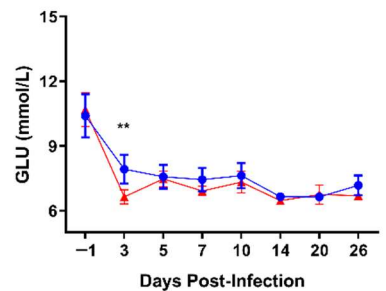
(c)



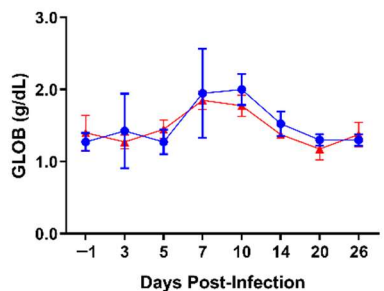
(d)



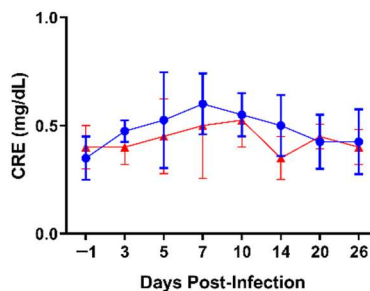
(e)



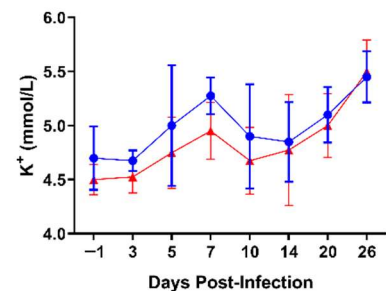
(f)



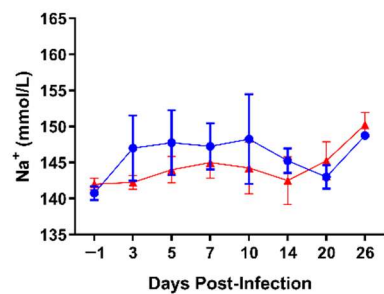
(g)



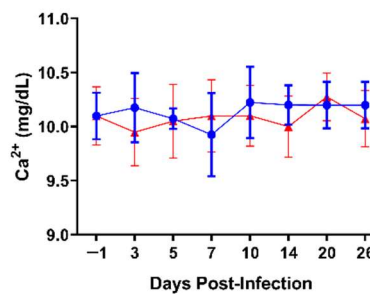
(h)



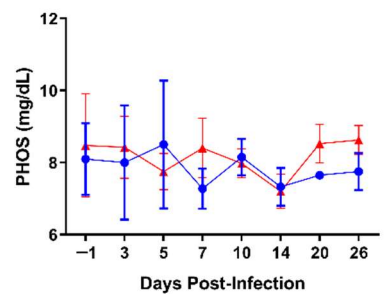
(i)



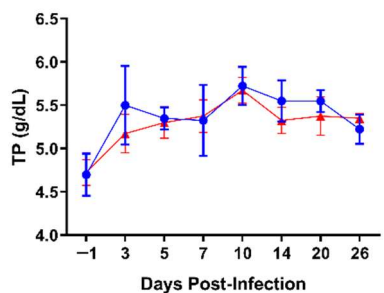
(j)



(k)



(l)



(m)

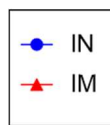


Figure S1. Average biochemical parameters of TAFV-infected ferrets. Whole blood was collected from each animal on days -1, 3, 5, 7, 10, 14, 20 and 26 post infection and the concentrations of the following parameters measured: (a) albumin (ALB); (b) amylase (AMY); (c) alkaline phosphatase (ALP); (d) alanine aminotransferase (ALT); (e) blood urea nitrogen (BUN); (f) blood glucose (GLU); (g) globulin (GLOB); (h) creatinine (CRE); (i) potassium (K^+); (j) Sodium (Na^+); (k) calcium (Ca^{2+}); (l) phosphorus (PHOS); (m) total protein (TP). IM, intramuscular inoculation; IN, intranasal inoculation.

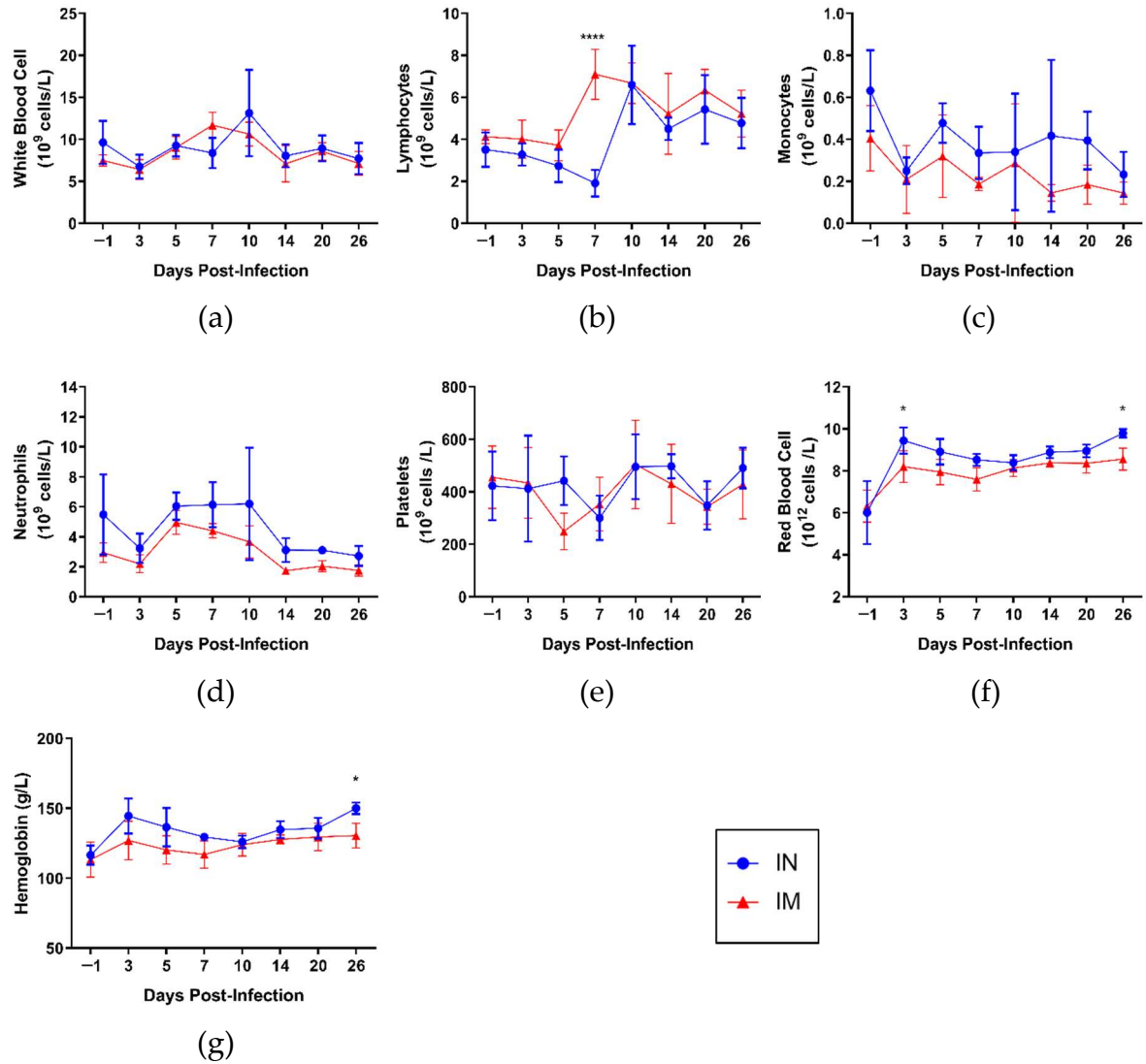


Figure S2. Average complete blood counts of TAFV-infected ferrets. Whole blood was collected from each animal on days -1, 3, 5, 7, 10, 14, 20 and 26 post infection and the concentrations of the following parameters measured: (a) white blood cells (WBC); (b) lymphocytes (LYM); (c) monocytes (MON); (d) neutrophils (NEU); (e) platelets (PLT); (f) red blood cells (RBC) and (g) hemoglobin (HB). IM, intramuscular inoculation; IN, intranasal inoculation.

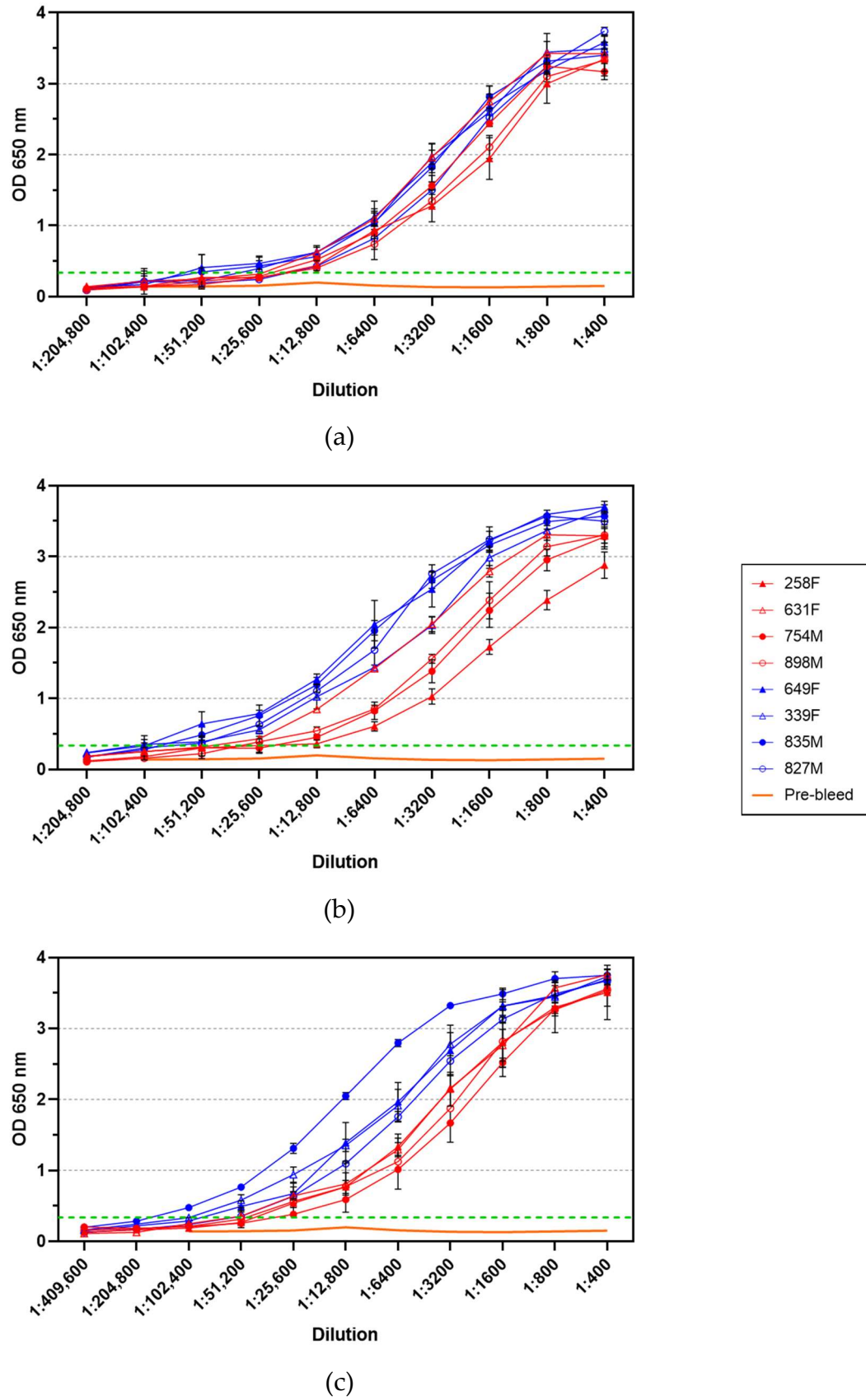


Figure S3. Detection of TAFV GP-specific IgG by ELISA. Serum samples collected from each animal on 14 (a), 20 (b) and 26 dpi (c) were subjected to ELISA to quantify circulating TAFV GP-specific IgG, indicated by fluorescence optical density (OD). The average of all pre-bleed (-1 dpi) samples is depicted by the orange line, and the positive cut-off is denoted by the green dotted line.

Table S1. RT-qPCR primer/probe sequences used for the detection of TAFV RNA

| Target | Forward Primer (5'-3') | Reverse Primer (5'-3') | Probe |
|------------|--------------------------------|--------------------------------|--|
| TAFV L | CGTCA TCGCA TTGTT GCAA | CACTC GACTG TGGGC TTCTG | 6FAM-ATGAG TCCTC CCACG ATCAT GTTTG TGC-BHQ1 |
| TAFV NP | ACCAG CACCT GTTTA TCGGA GTA | ACTCA CTTGG TTTGG TTGCT TCT | 6FAM-AGAAA AGGAG CCCCT CCCCCG CAAG-BHQ1 |

Table S2. Endpoint Titers of TAFV GP-specific IgG

| Route | Animal ID | Day Post-Infection | | |
|-----------------------|-----------|--------------------|-----------|-----------|
| | | 14 | 20 | 26 |
| Intramuscular (IM) | 258F | 1:12,800 | 1:25,600 | 1:25,600 |
| | 631F | 1:12,800 | 1:25,600 | 1:51,200 |
| | 754M | 1:12,800 | 1:12,800 | 1:25,600 |
| | 898M | 1:12,800 | 1:25,600 | 1:12,800 |
| Intranasal (IN) | 649F | 1:51,200 | 1:51,200 | 1:51,200 |
| | 339F | 1:25,600 | 1:102,400 | 1:51,200 |
| | 835M | 1:51,200 | 1:51,200 | 1:102,400 |
| | 827M | 1:12,800 | 1:51,200 | 1:51,200 |

Values reported represent the lowest reciprocal dilution above the cut-off