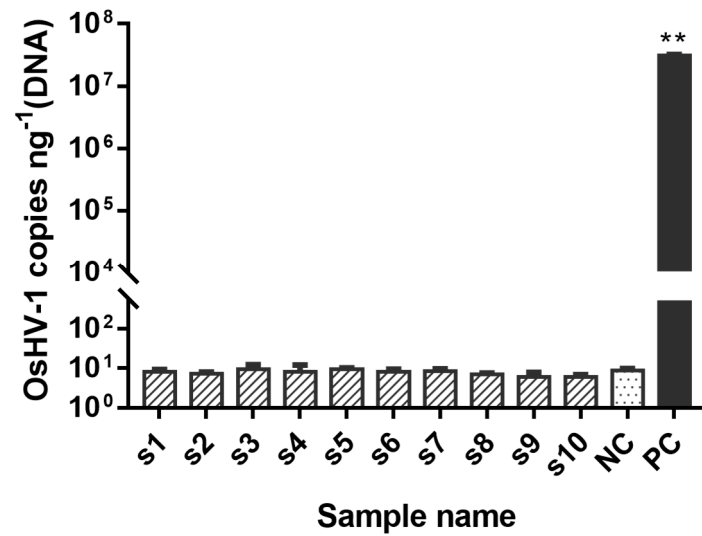
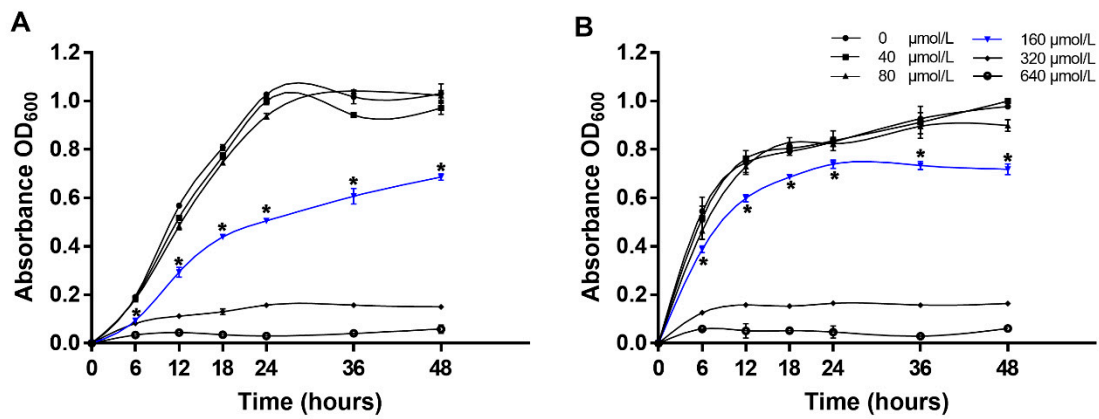


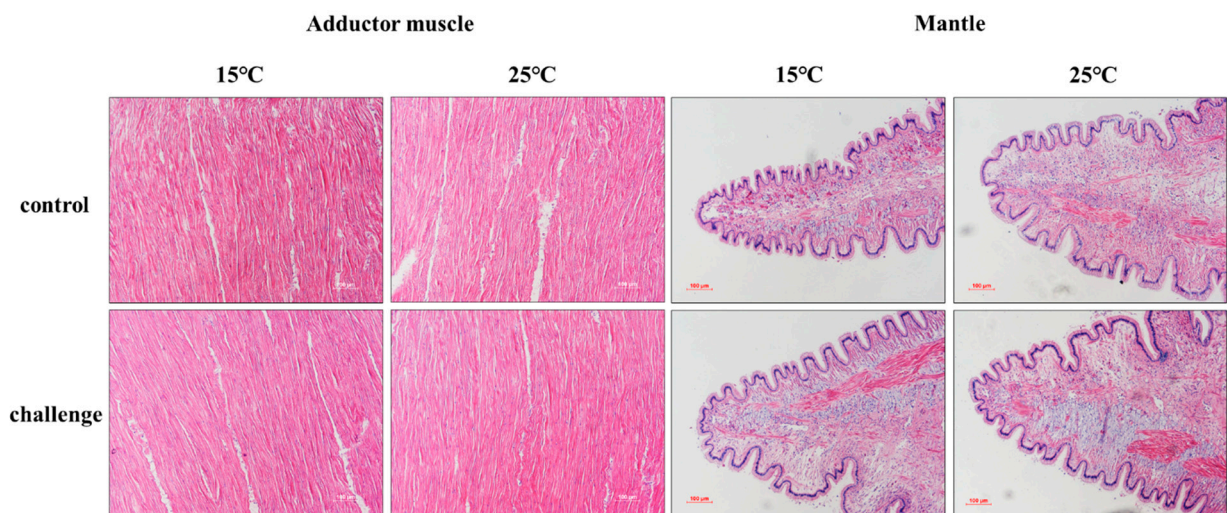
## Supplementary Materials



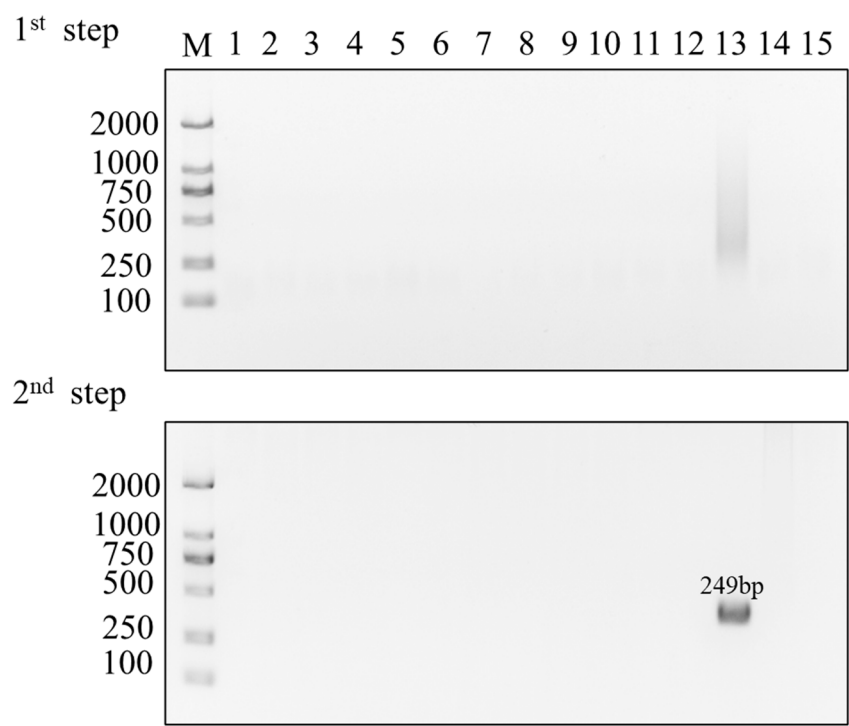
**Figure S1.** OsHV-1 detection in natural diseased ark clams. The load of OsHV-1 was quantified by qPCR and expressed as viral genomic copies per ng of total tissue DNA. \*\* $p < 0.01$ .



**Figure S2.** Growth of SbA1-1 in 2216E medium supplemented with different concentrations of DP at 15 °C (A) and 25 °C (B).



**Figure S3.** Histology of adductor muscle and mantle tissues of ark clams after SbA1-1 infection at 15 °C and 25 °C. Bar = 100 μm.



**Figure S4.** Specificity analysis of the nested PCR method. M, Molecular marker; Lanes 1-13: PCR amplified products with DNA templates extracted from *V.splendidus*, *V.toranzoniae*, *V. harveyi*, *V. crassostreae*, *V.gigantis*, *V.cyclitrophicus*, *V.alginolyticus*, *Pseudoalteromonas phenolica*, *Pseudoalteromonas atlantica*, *Psychrobacter marincola*, *Photobacterium swingsii*, *Tenacibaculum lutimaris* and *V. kanaloae*, respectively; lane 14: PCR amplified products with DNA template sample extracted from healthy ark clams; and lane 15: blank control.