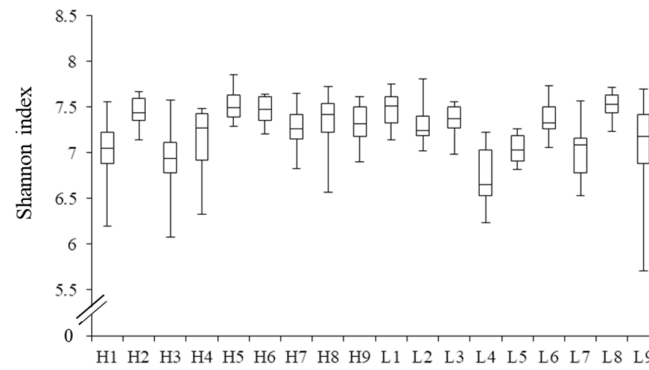
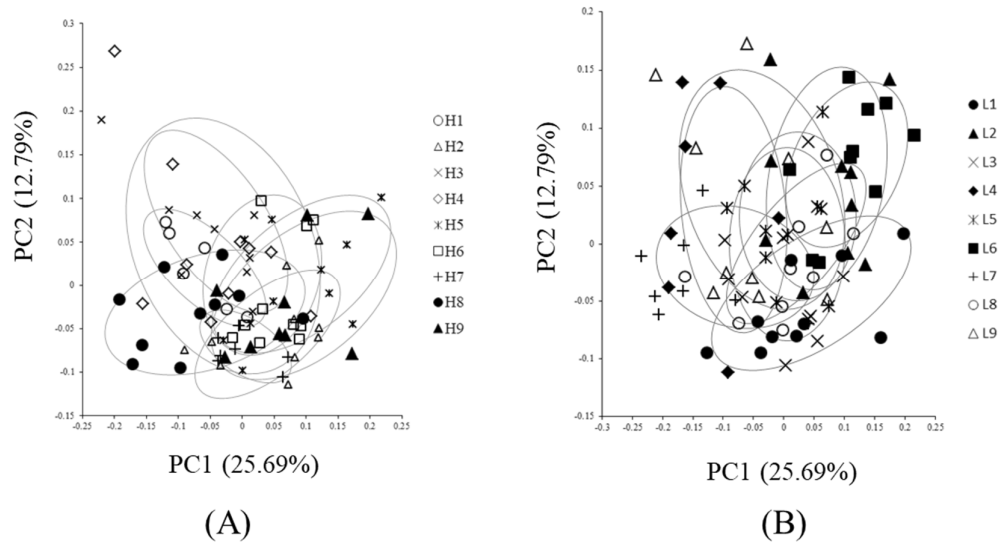


(A)

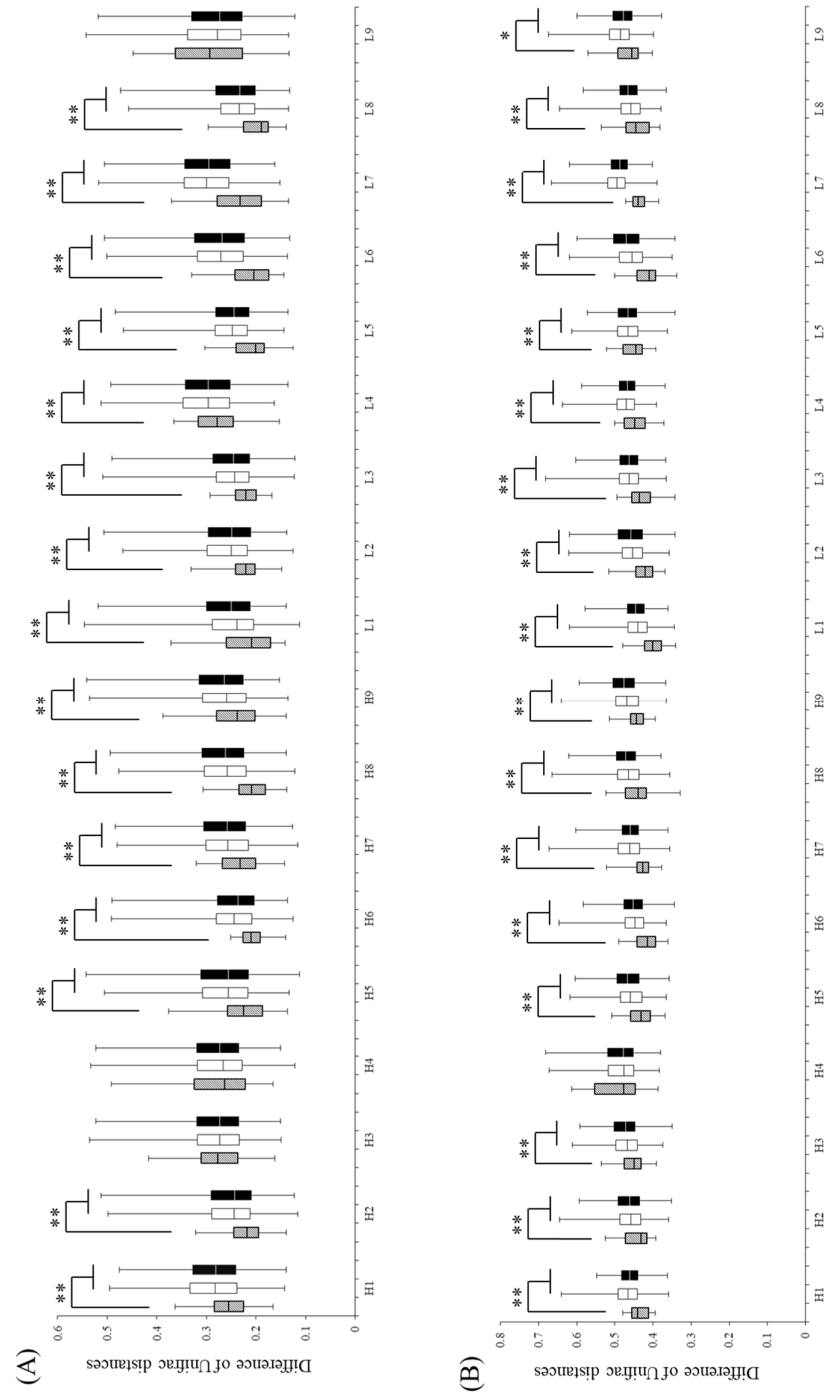


(B)

Supplementary Figure S1 Chao1 (A) and Shannon (B) indices of the fecal microbiotas of sows in 18 farms. Panel A: Chao1 index; Panel B: Shannon index. The one-way analysis of variance (ANOVA) indicated that Chao1 and Shannon indices were of the indigenous microbiotas of sows in the farms ($P < 0.05$).



Supplementary Figure S2 Principal coordinate analysis (PCoA) based on weighted UniFrac distances generated from the fecal microbiotas of sows in 9 farms for group H **(A)**, and 9 farms for group L **(B)**. Ellipses were drawn to show non-statistical differences between the 9 farms in each group. The PERMANOVA analysis indicated that the compositions of the gut microbiotas of sows differed between 9 farms in each group, as per the weighted UniFrac ($P < 0.01$).



Supplementary Figure S3 The weighted (A) and unweighted (B) UniFrac distance of fecal microbiotas in sows within the farm (intra-farm) and the distance against the sows different other farms in group H or L (inter-farm). The shaded, white and black boxes show the intra-farm distance, inter-farm distance (H group) and inter-farm distance (L group) respectively. The difference in UniFrac distance in each farm was analyzed by one-way ANOVA followed by Tukey post-hoc test (* $P < 0.05$, ** $P < 0.01$).