

**Table S1.** Primers used in this study.

## (A) For gel shift assay

| Name         | sequence                  |
|--------------|---------------------------|
| fbaB/yegT-F  | CAAATGAAGCTCCGGCAGAGT     |
| fbaB/yegT-R  | CATGACAGGTAATGTAAGGTACGCG |
| fbaB/yegT1-F | CAATCATTACGCGGTCTACGTAGTC |
| fbaB/yegT1-R | TTTCTGATGAATCGAGCC        |
| fbaB/yegT2-F | AATCATAATCCTGGTCGTTAC     |
| fbaB/yegT2-R | GATAAACCATTCAACAAACATC    |
| fbaB/yegT3-F | CTGTCATGAAGGAATTAAGA      |
| fbaB/yegT3-R | GGCATATAGGTTAGCGAGTA      |
| fbaB/yegT4-F | ATCACTGACCGCTTTTCTC       |
| fbaB/yegT4-R | CCAACTTCGGTCAGATAAC       |
| fbaB/yegT5-F | AAATGGATATTAAAGTCATGCTC   |
| fbaB/yegT5-R | ATAAAGAAGCCATAGCGGAT      |
| fbaB/yegT6-F | AAGGTATTATTGCTTGGTCTG     |
| fbaB/yegT6-R | TCATTAACTTCCCCTTGTGTCAAC  |

## (B) For Northern blot analysis

|        |                       |
|--------|-----------------------|
| yegT-F | GTTGGCTCCATCACTGACCG  |
| yegT-R | AACGCTAGTGGCATCGCAA   |
| yegV-F | GATTACACACGCTGCTGCCT  |
| yegV-R | CGTCACGTCTTGCAGCTCTT  |
| fbaB-F | TTGCGGTTGGTGC GACTATC |
| fbaB-R | GTCCTGCACGGCGTTAATCA  |

## (C) For RT-qPCR

|        |                      |
|--------|----------------------|
| yegT-F | TTGCGCTGACTAACAGCATC |
| yegT-R | AAGAAACCACATGCCAGACC |
| yegV-F | AAGACGTGACGCCGTTTATC |
| yegV-R | TCTTGACGATTGAGCGACAC |
| fbaB-F | ACGCCGACAACCTTTTACAG |
| fbaB-R | TCATGTCCGGGGAGATAAAG |

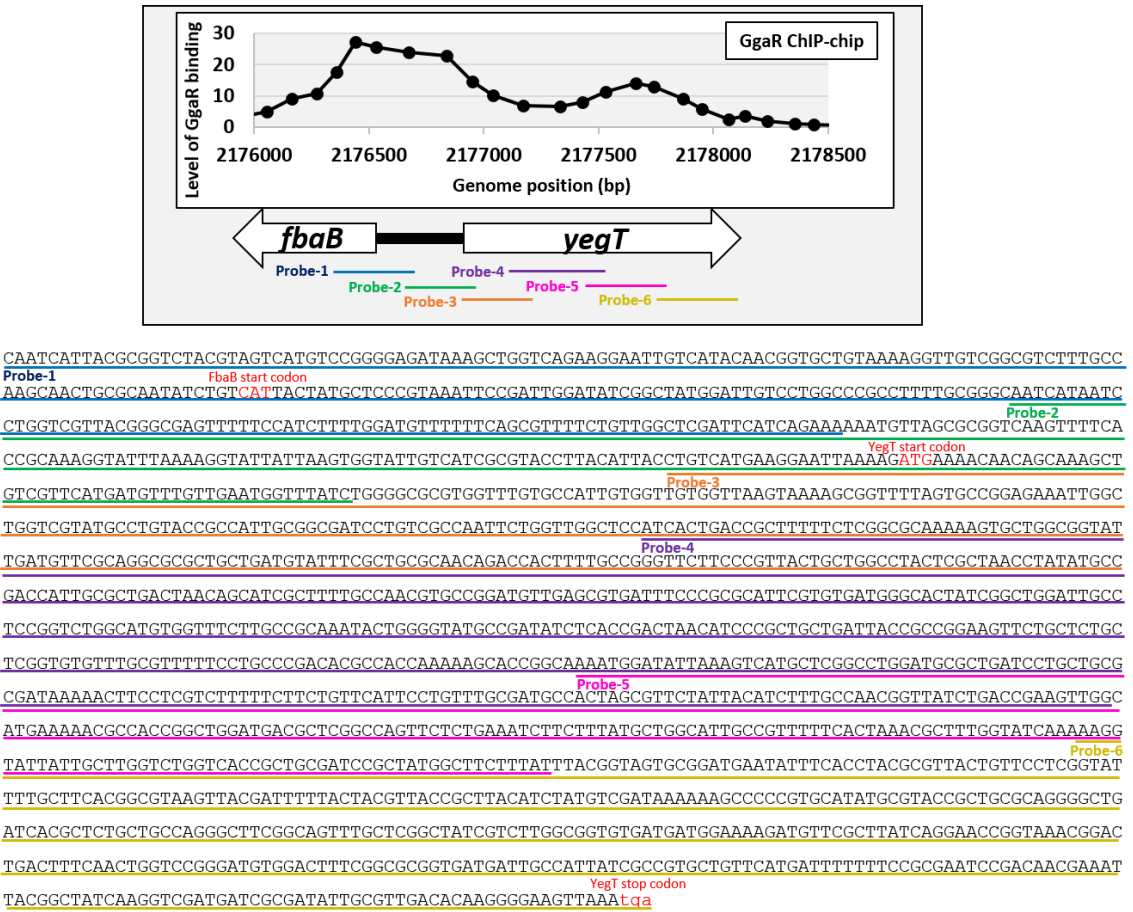


Figure S1. Location of each probe in the *fbaB*/*yegT* region used to map the GgaR-binding site.

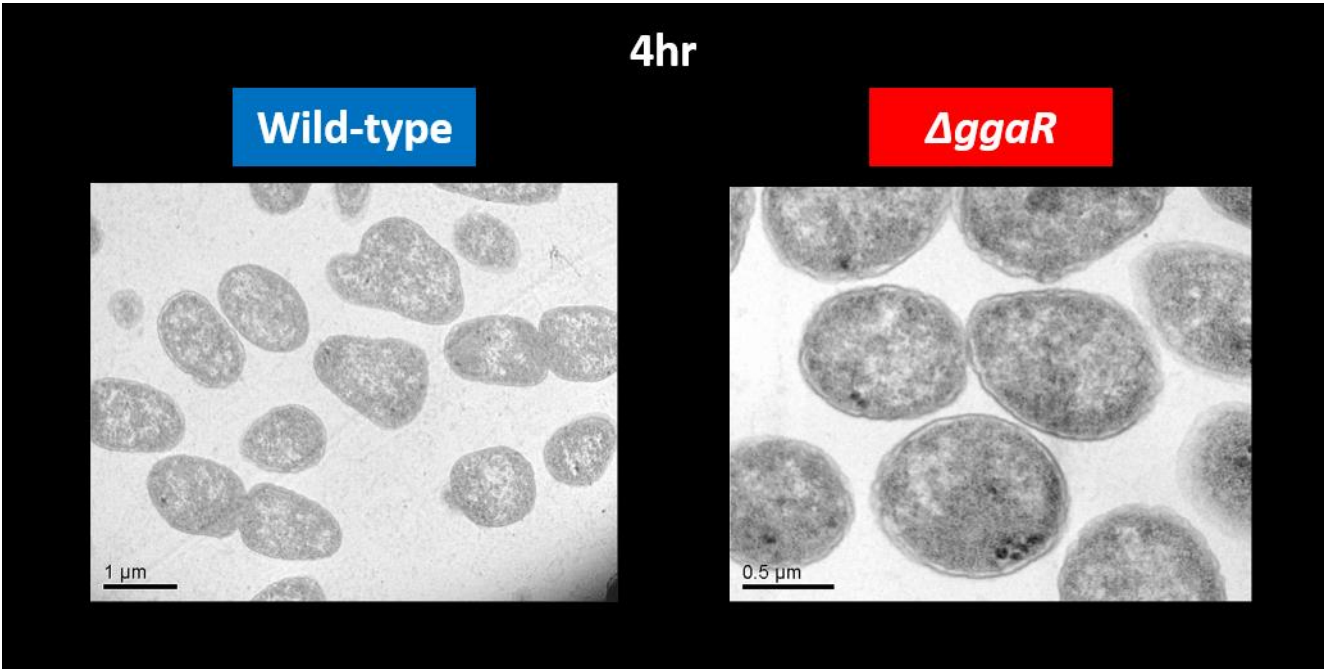


Figure S2. TEM analysis of glycogen granules 4 h after inoculation.