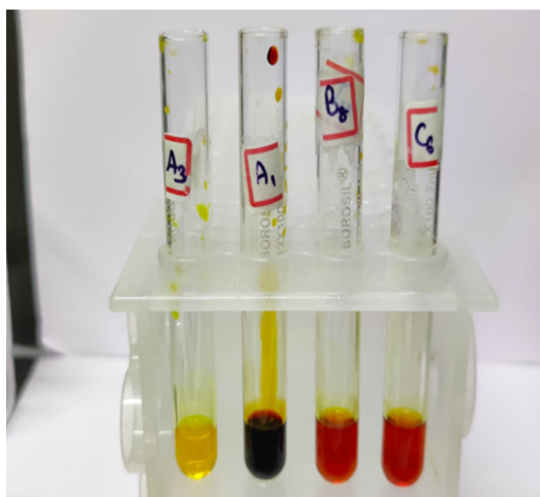




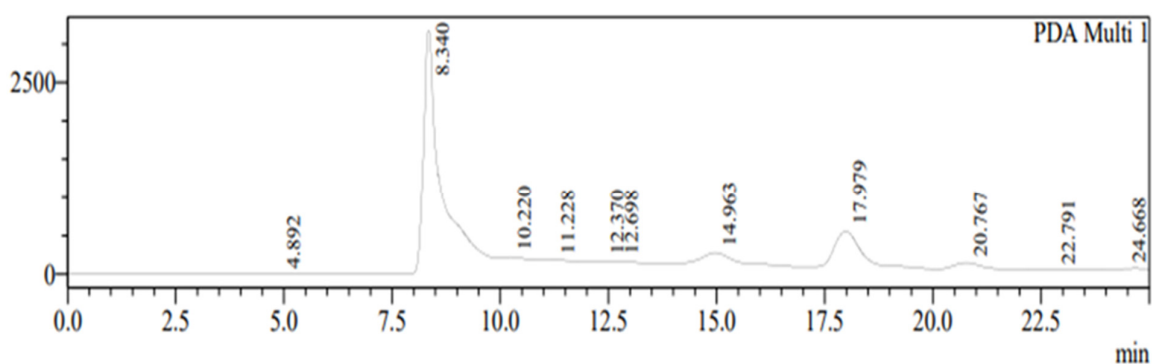
Supplementary Materials

## Microbial Synthesis of Lactic Acid from Cotton Stalk for Polylactic Acid Production

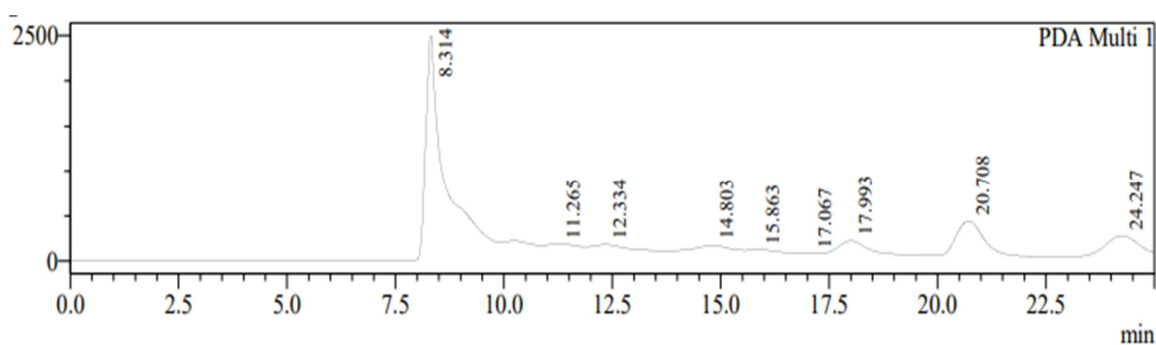


Glucose estimation using DNSA method of fermentation broth

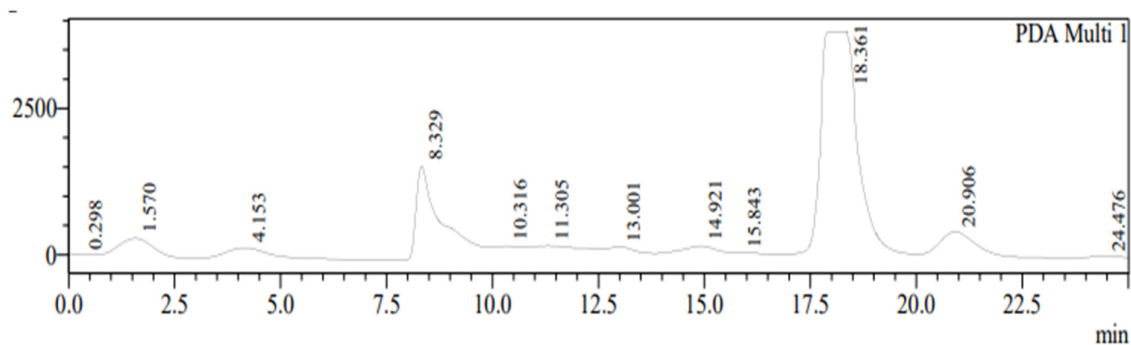
Supplementary Figure S1. Isolation of lactic acid bacteria.



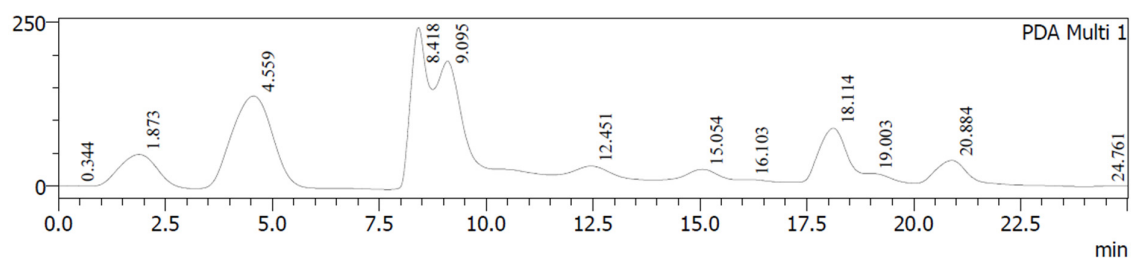
HPLC Chromatogram of LAB-2 isolate



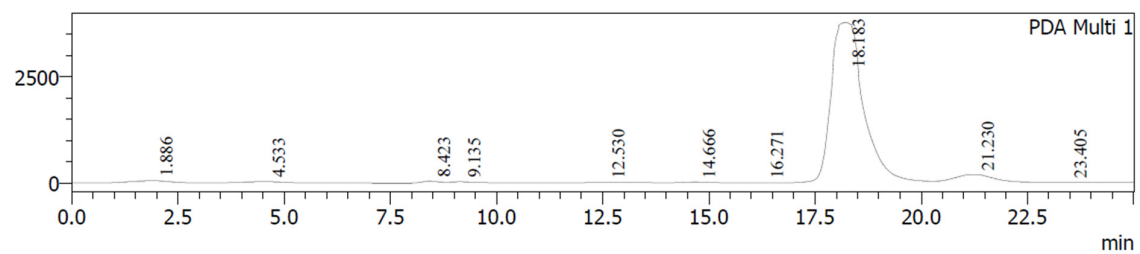
HPLC Chromatogram of LAB-3 isolate



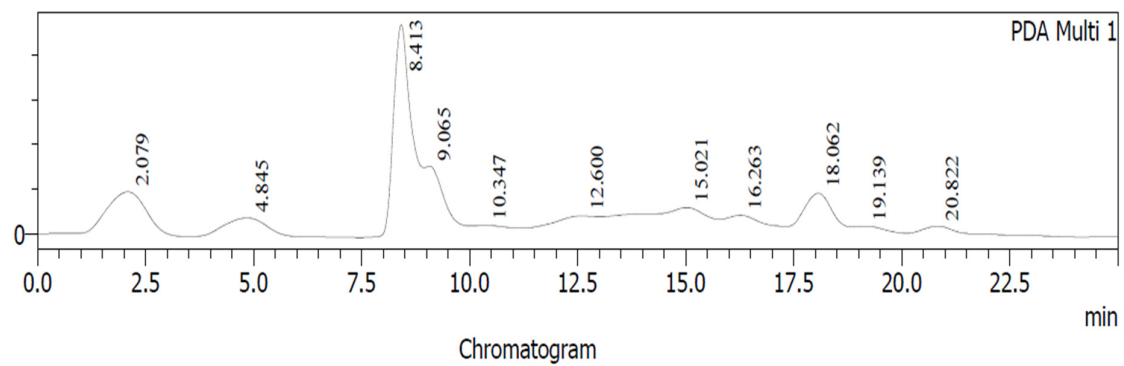
HPLC Chromatogram of LAB-4 isolate



HPLC Chromatogram of LAB-5 isolate

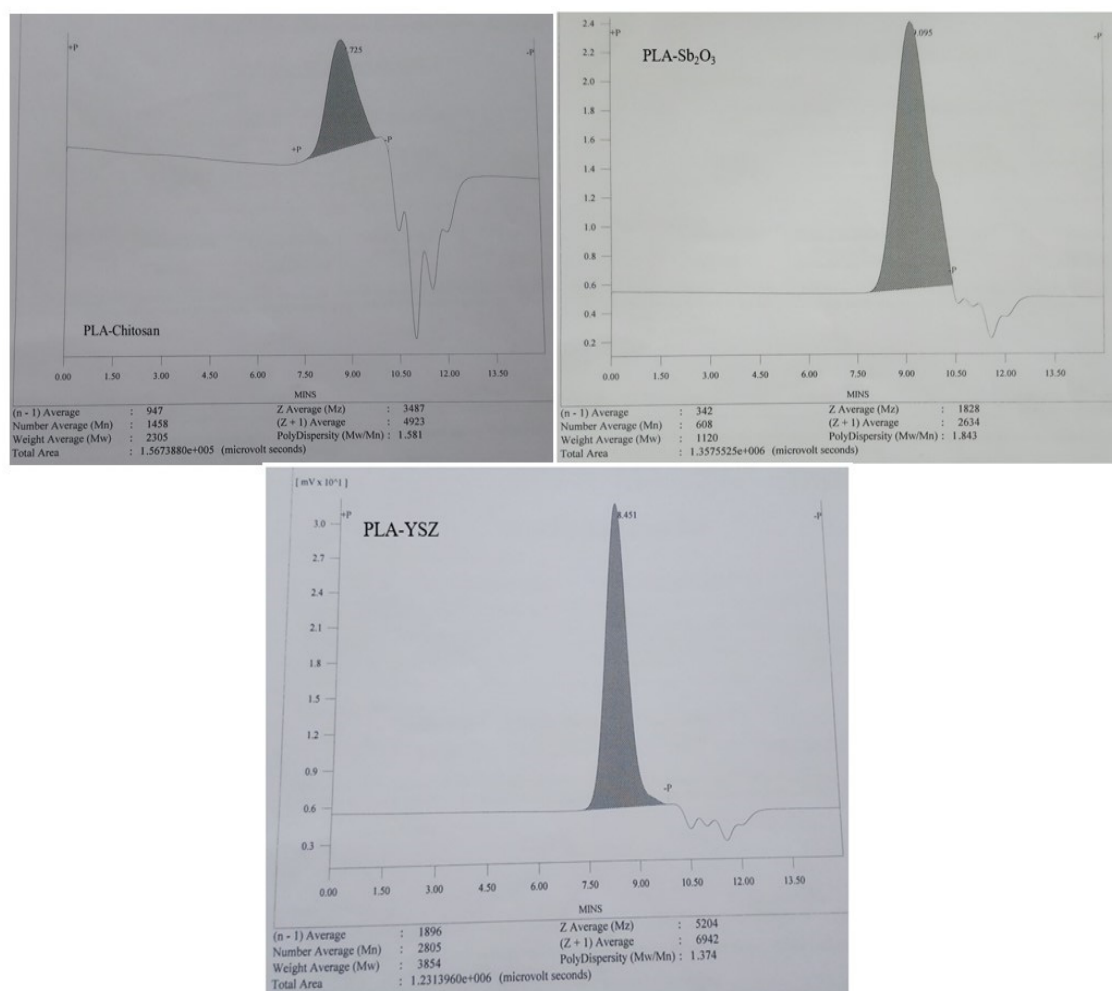


HPLC Chromatogram of LAB-6 isolate



HPLC Chromatogram of LAB-11 isolate

**Supplementary Figure S2.** HPLC profiles of lactic acid concentrations by isolates.



**Supplementary Figure S3.** GPC spectrum of resultant polymers i.e., PLA-Chitosan, PLA-Sb<sub>2</sub>O<sub>3</sub>, and PLA-YSZ.