



Supplementary Material

Application of phytogenic liquid supplementation on soil microbiome restoration in Queensland pasture dieback

Supplementary Material

Xipeng Ren¹, Maria M. Whitton¹, Sung J. Yu¹, Tienneke Trotter¹, Yadav S. Bajagai¹ and Dragana Stanley^{1,*}

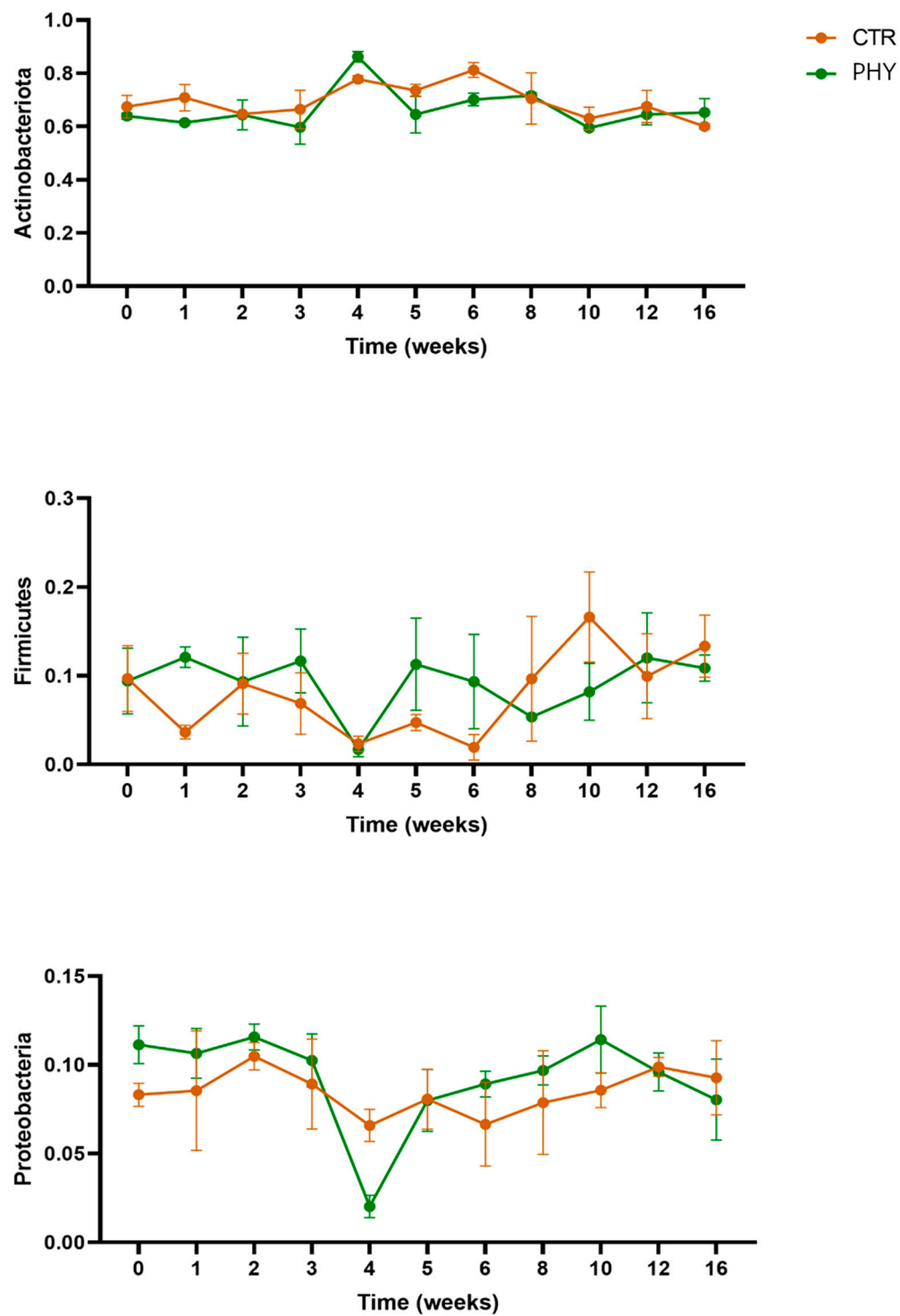


Figure S1. Temporal distribution of phyla

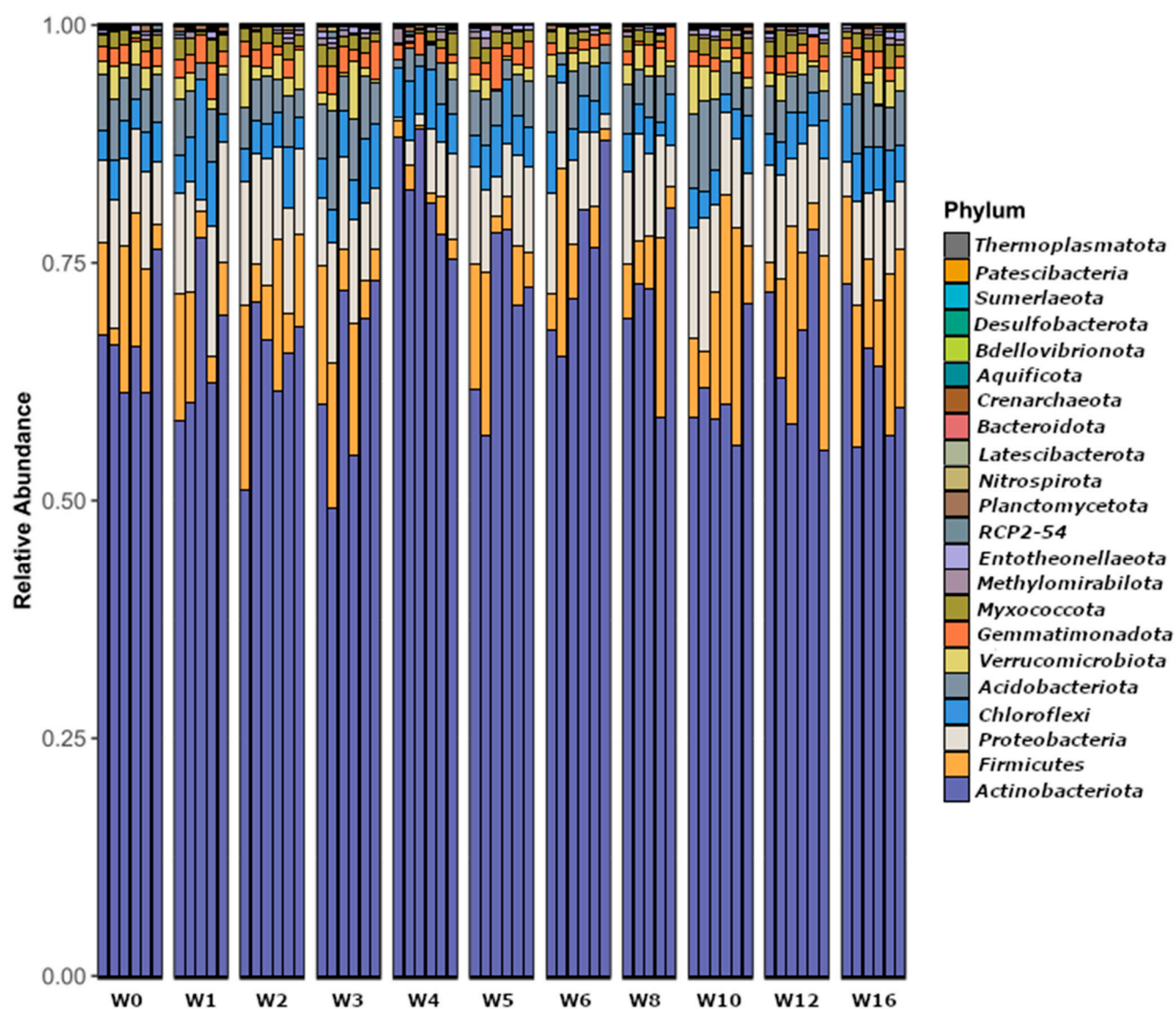


Figure S2. Relative abundance at phylum level

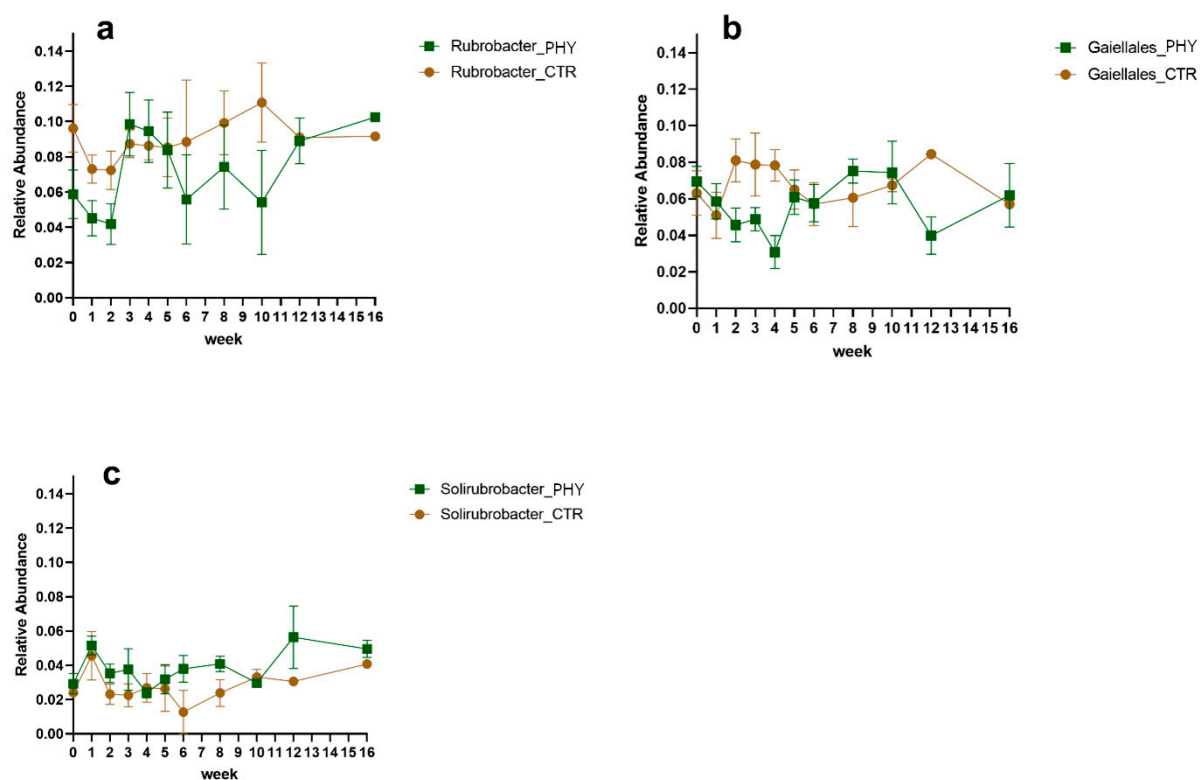


Figure S3. Relative abundance of biomarkers.

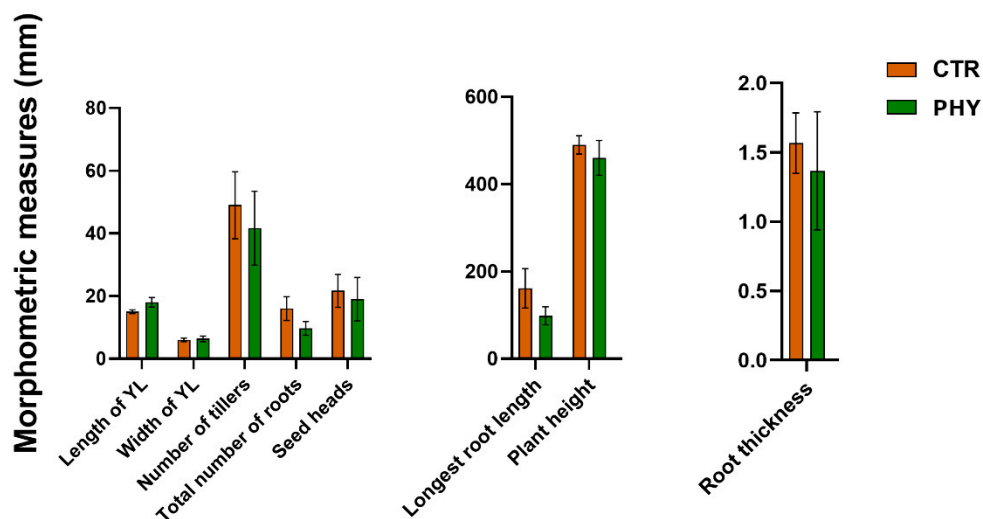


Figure S4. Morphometric measurements in dicots six months after treatment.

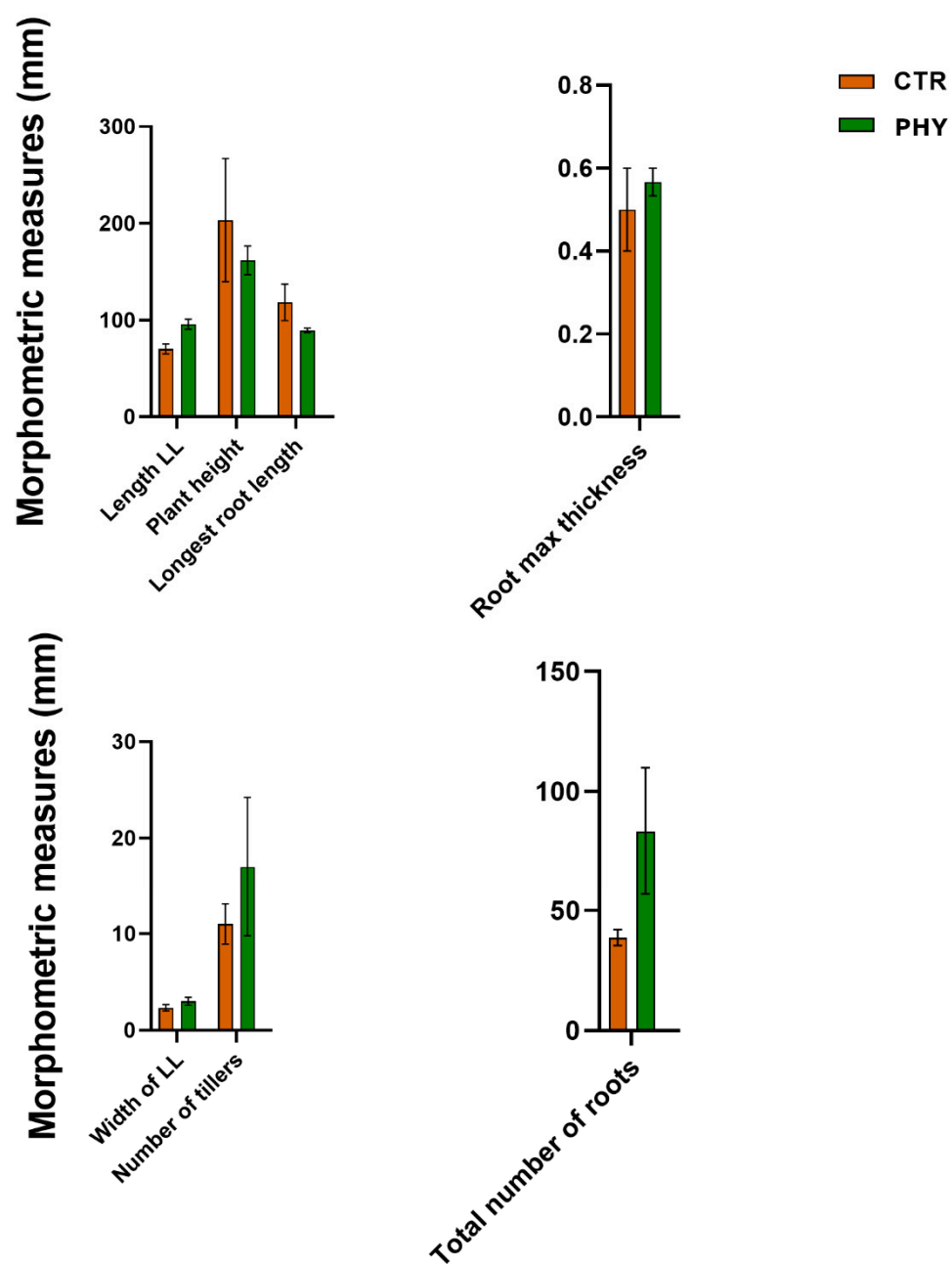


Figure S5. Morphometric measurements in monocot six months after treatment.

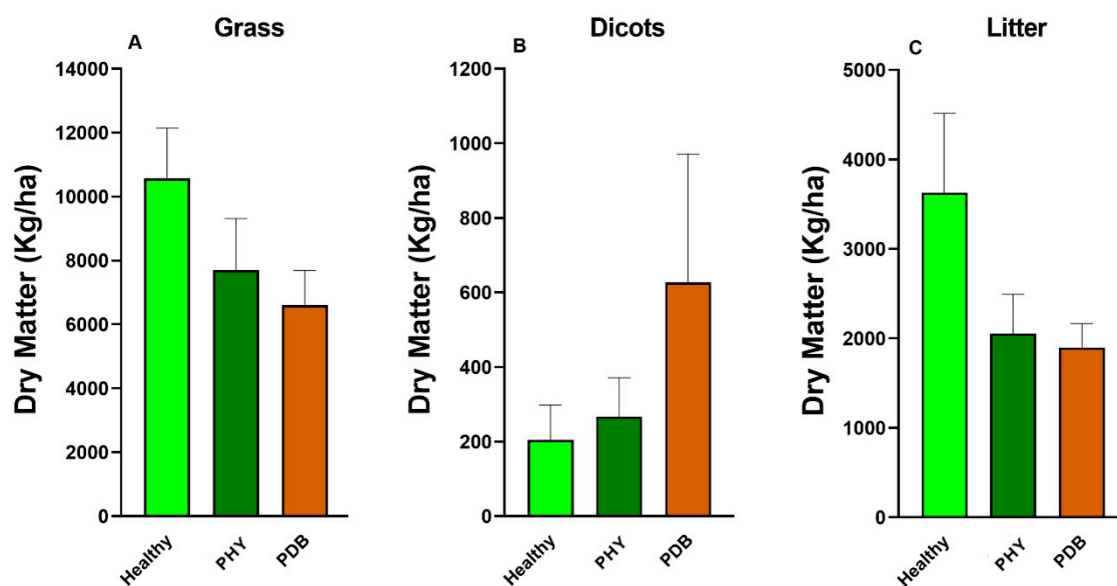


Figure S6. Dry matter differences between healthy, phytogenic liquid treated and control plots. Data from the second trial.

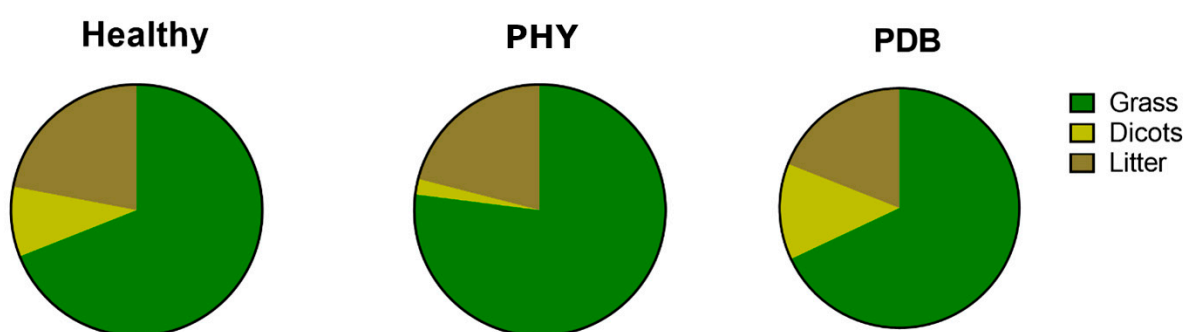


Figure S7. Grass/dicots ratio among healthy, phytogenic liquid treated and pasture dieback plots. Data from the second trial.