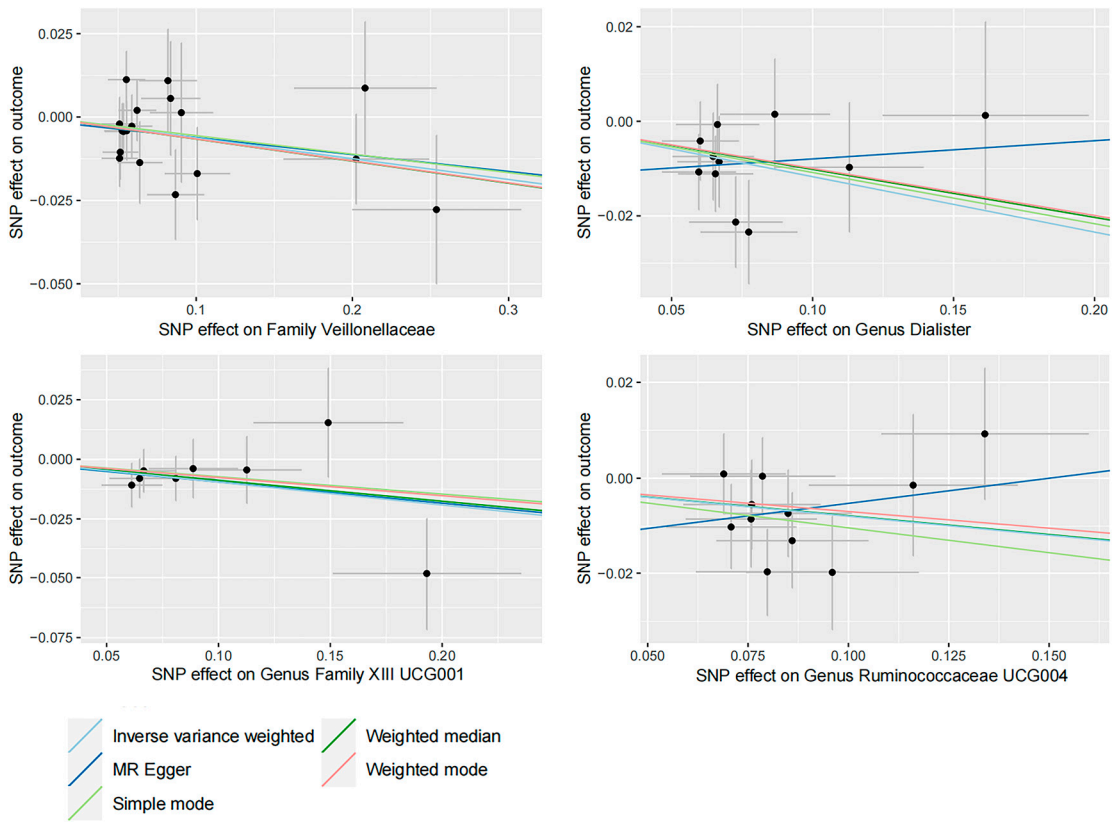
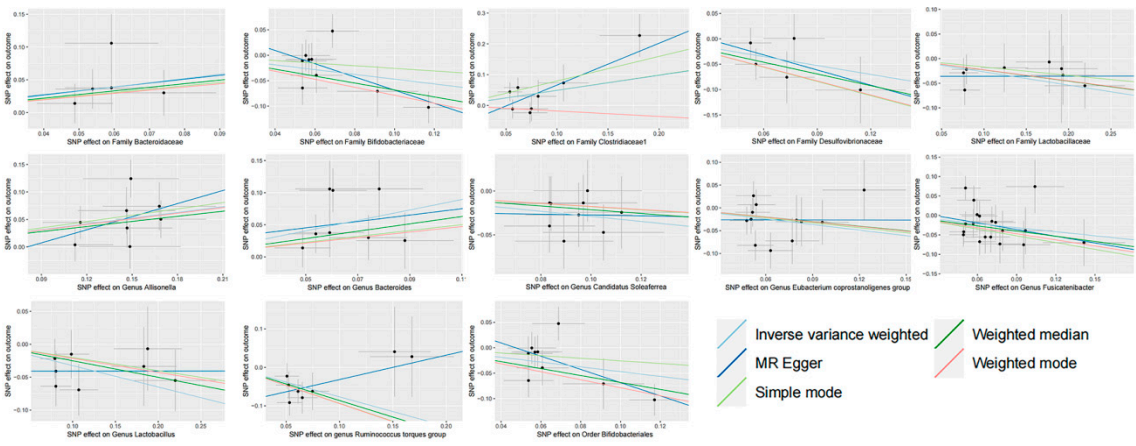


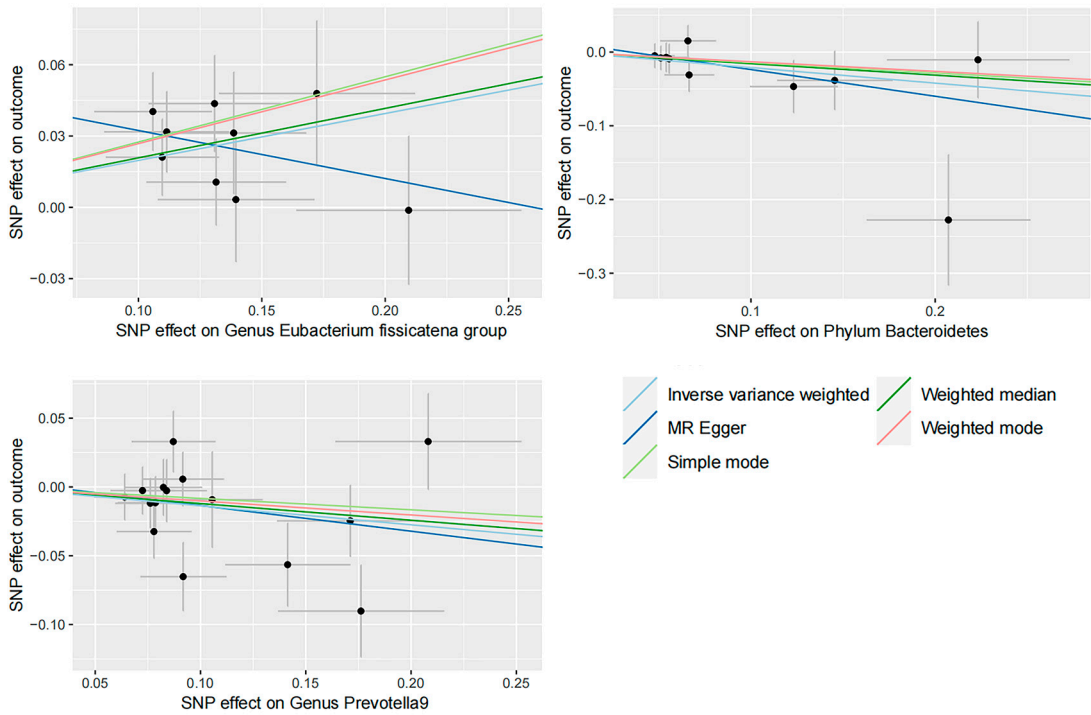
Supplementary Figure S1 Scatter plot analysis of the association between gut microbiota and eczema.



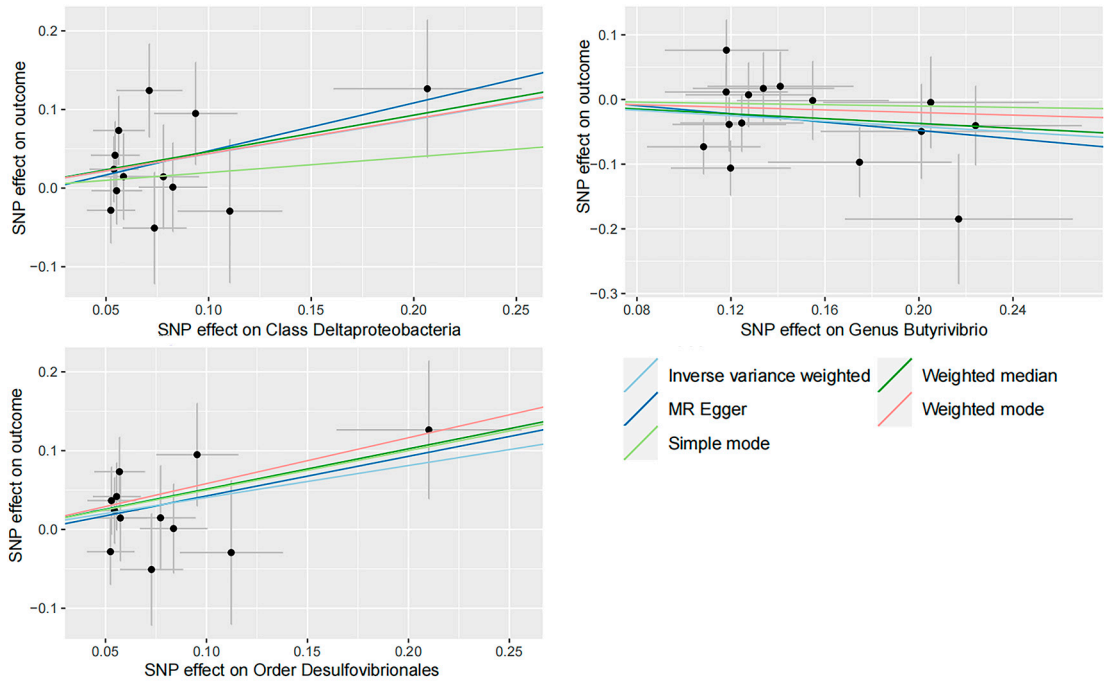
Supplementary Figure S2 Scatter plot analysis of the association between gut microbiota and acne.



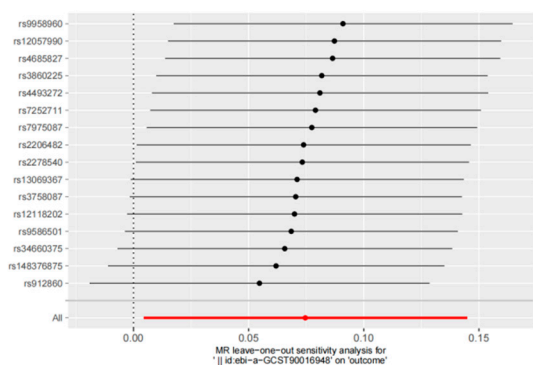
Supplementary Figure S3 Scatter plot analysis of the association between gut microbiota and psoriasis.



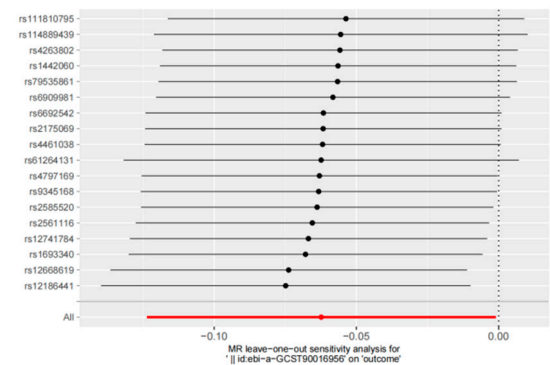
Supplementary Figure S4 Scatter plot analysis of the association between gut microbiota and rosacea.



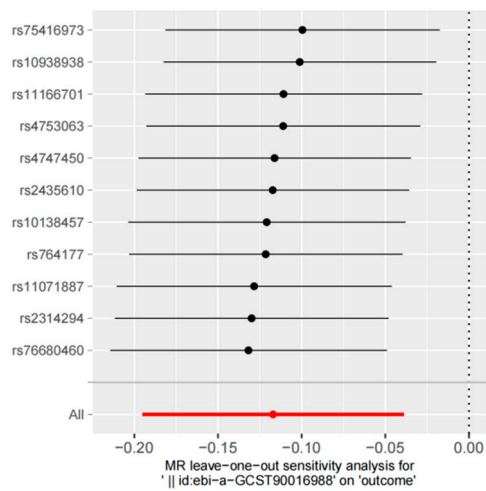
Supplementary Figure S5 Forest plots of SNPs associated with gut microbiota and eczema.



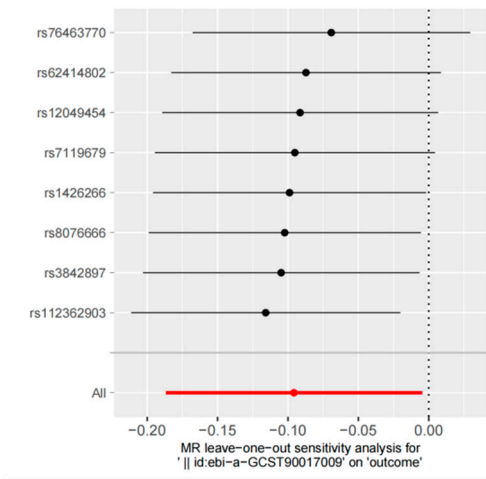
Genus Prevotellaceae



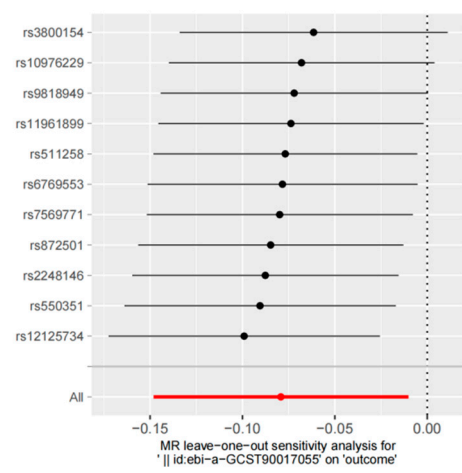
Genus Veillonellaceae



Genus Dialister

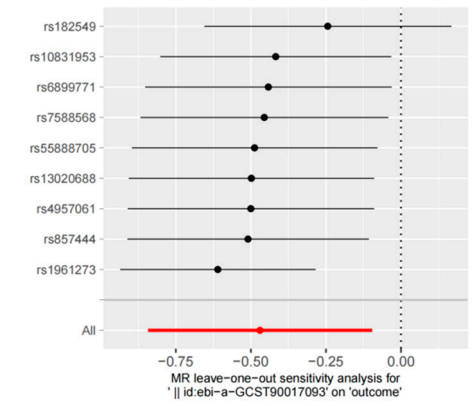


Genus Family XIII

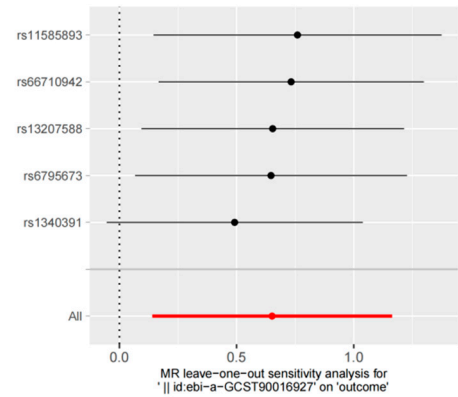


Genus Ruminococcaceae UCG004

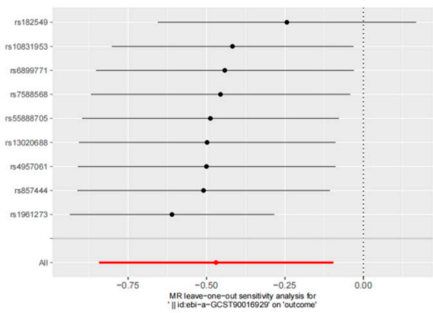
Supplementary Figure S6 Forest plots of SNPs associated with gut microbiota and acne.



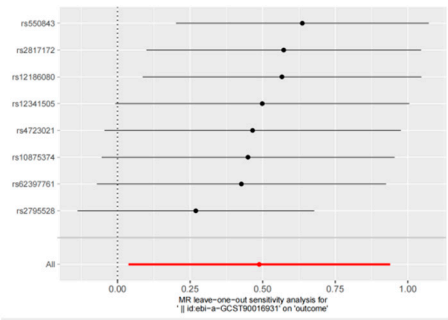
Order Bifidobacteriales



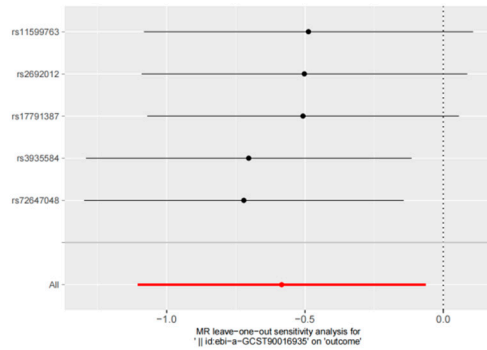
Family Bacteroidaceae



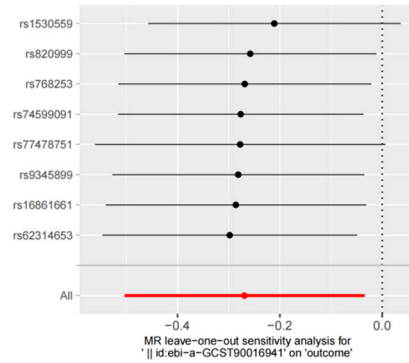
Family Bifidobacteriaceae



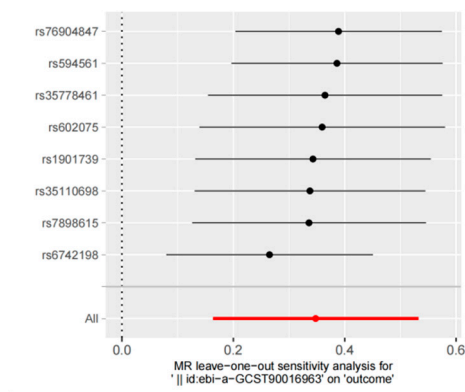
Family Clostridiaceae1



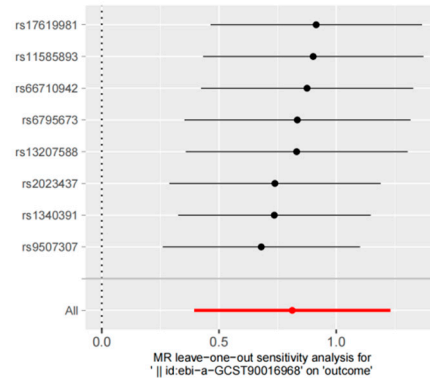
Family Desulfovibrionaceae



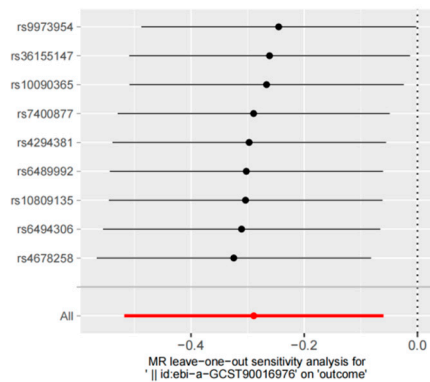
Family Lactobacillaceae



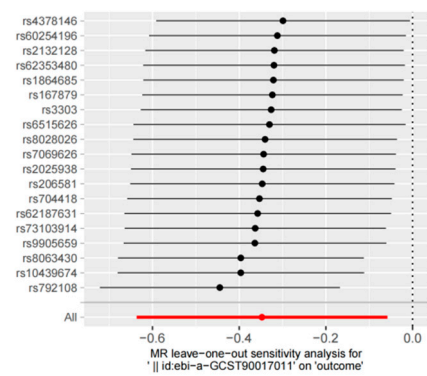
Genus Allisonella



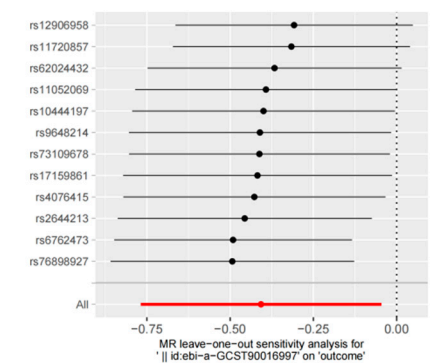
Genus Bacteroides



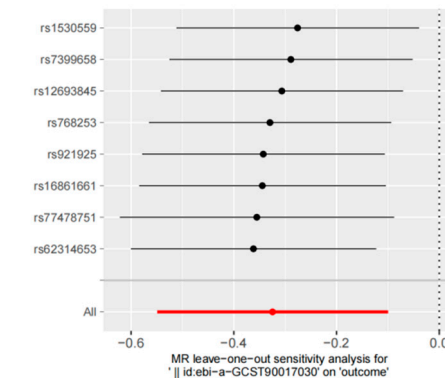
Genus Candidatus Soleaferrea



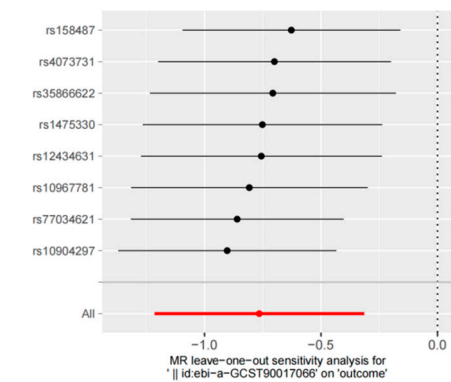
Genus Fusicatenibacter



Genus Eubacterium coprostanoligenes group

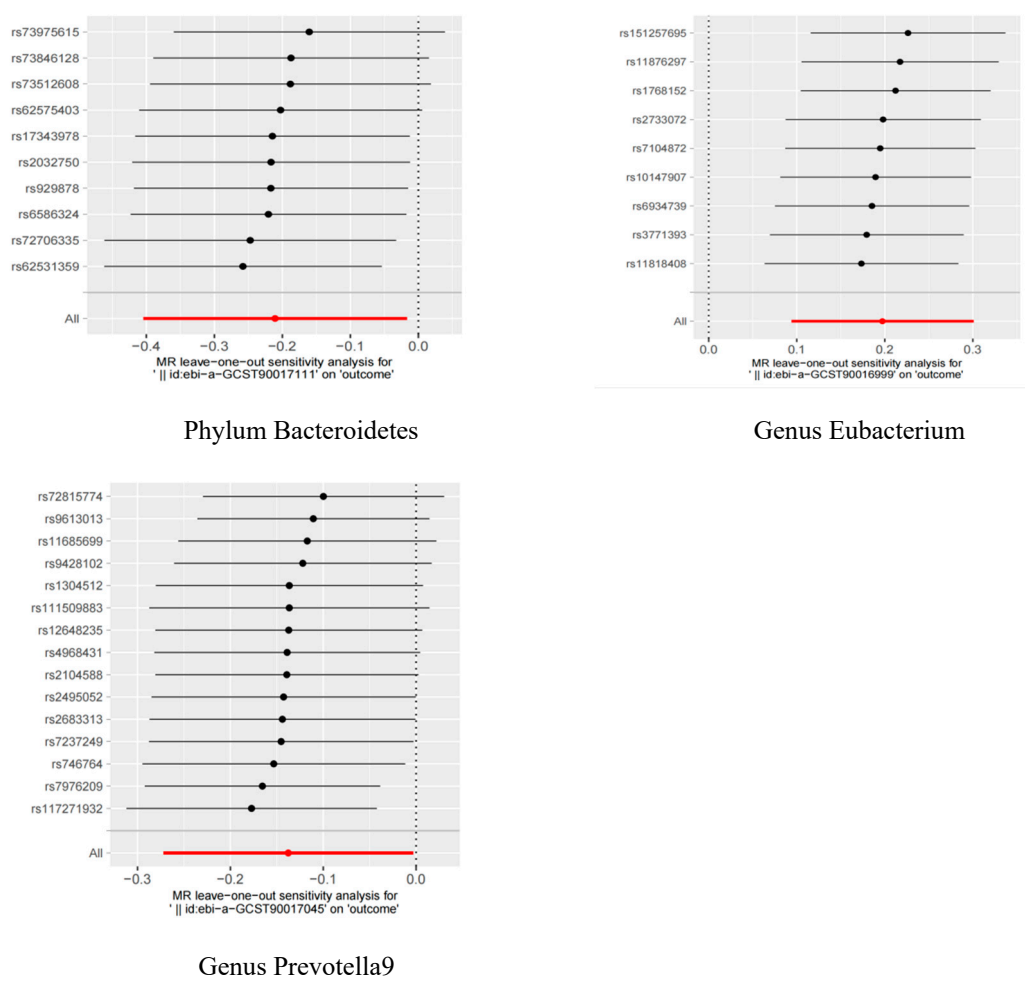


Genus Lactobacillus

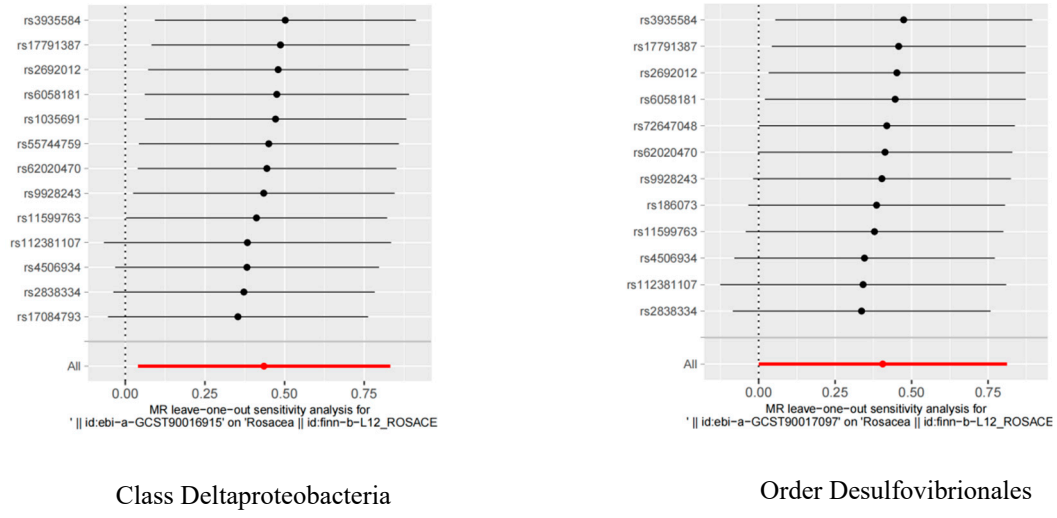


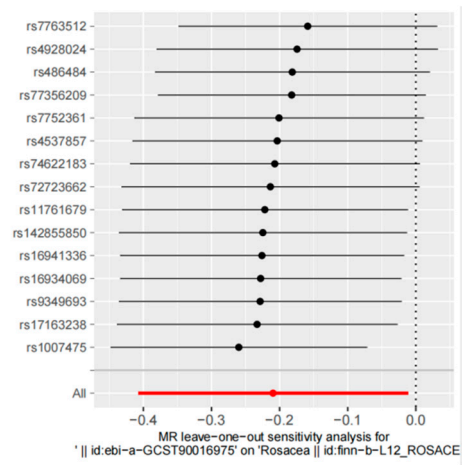
Genus Ruminococcus torques group

Supplementary Figure S7 Forest plots of SNPs associated with gut microbiota and psoriasis.



Supplementary Figure S8 Forest plots of SNPs associated with gut microbiota and rosacea.





Genus Butyrivibrio