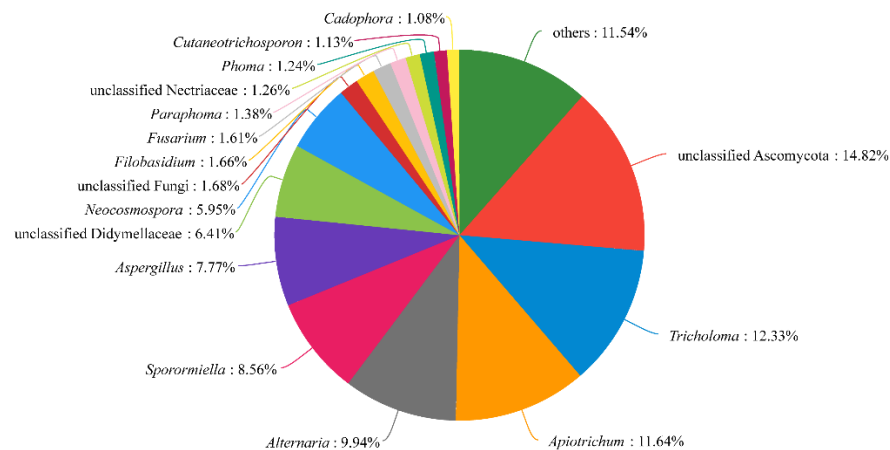


Supplementary materials

Supplementary Table.S1 The Alpha-Diversity indexes of each tissue type and two sites of *S. alopecuroides* endophytic fungi at the genus level (mean \pm SD).

Sample	sequence	Ace	Simpson	Shannoneven	PD
H	HR	50437 \pm 3080	114.47 \pm 51.46	0.27 \pm 0.19	0.45 \pm 0.13
	HSt	51361 \pm 6789	89.23 \pm 31.91	0.32 \pm 0.35	0.45 \pm 0.23
	HL	79608 \pm 46329	94.03 \pm 18.67	0.36 \pm 0.40	0.42 \pm 0.25
	HS	51149 \pm 21880	64.48 \pm 5.02	0.29 \pm 0.04	0.43 \pm 0.02
	mean	58139 \pm 25596	90.55 \pm 32.86	0.31 \pm 0.24	0.44 \pm 0.16
B	BR	55586 \pm 3137	98.01 \pm 10.54	0.18 \pm 0.07	0.53 \pm 0.09
	BSt	56303 \pm 9111	53.4 \pm 2.93	0.20 \pm 0.04	0.57 \pm 0.06
	BL	55921 \pm 13903	52.37 \pm 20.78	0.39 \pm 0.12	0.43 \pm 0.07
	BS	45273 \pm 8671	53.22 \pm 11.61	0.30 \pm 0.10	0.44 \pm 0.10
	mean	53271 \pm 9435	64.25 \pm 23.22	0.27 \pm 0.11	0.49 \pm 0.09



Supplementary Figure.S1 Overall community composition of *S. alopecuroides* endophytic fungi at the genus level.