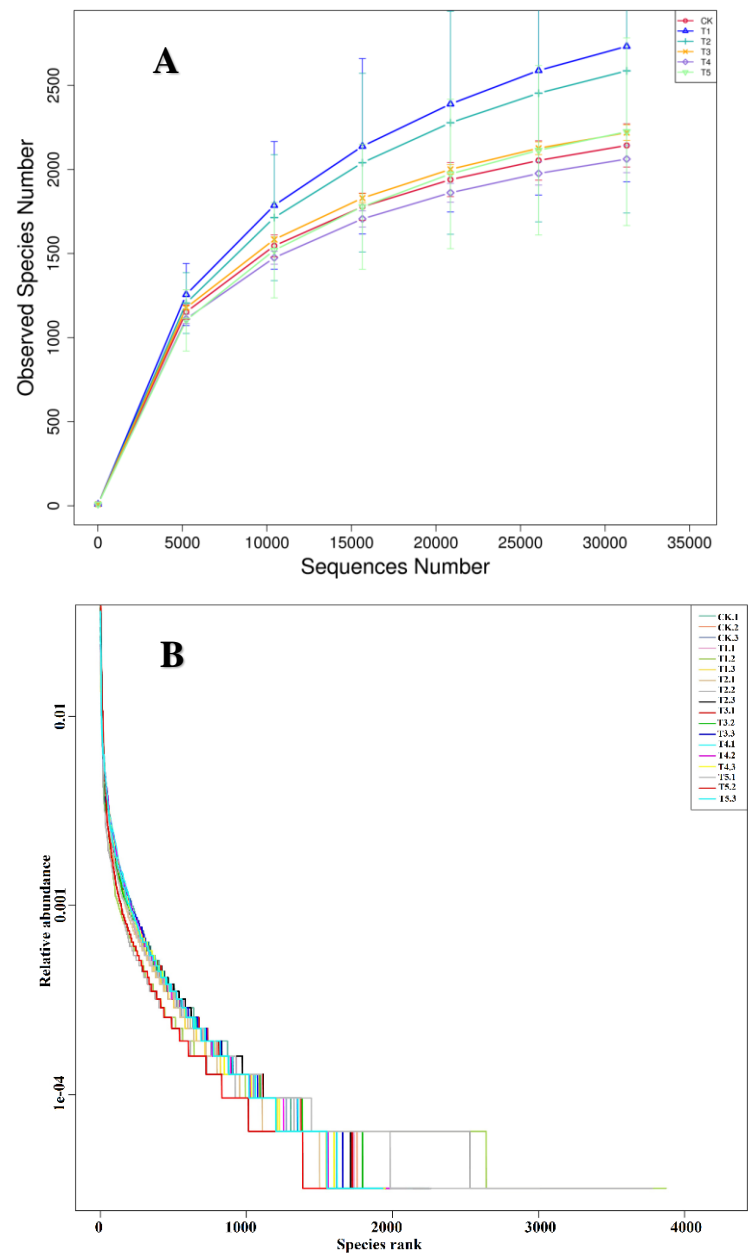
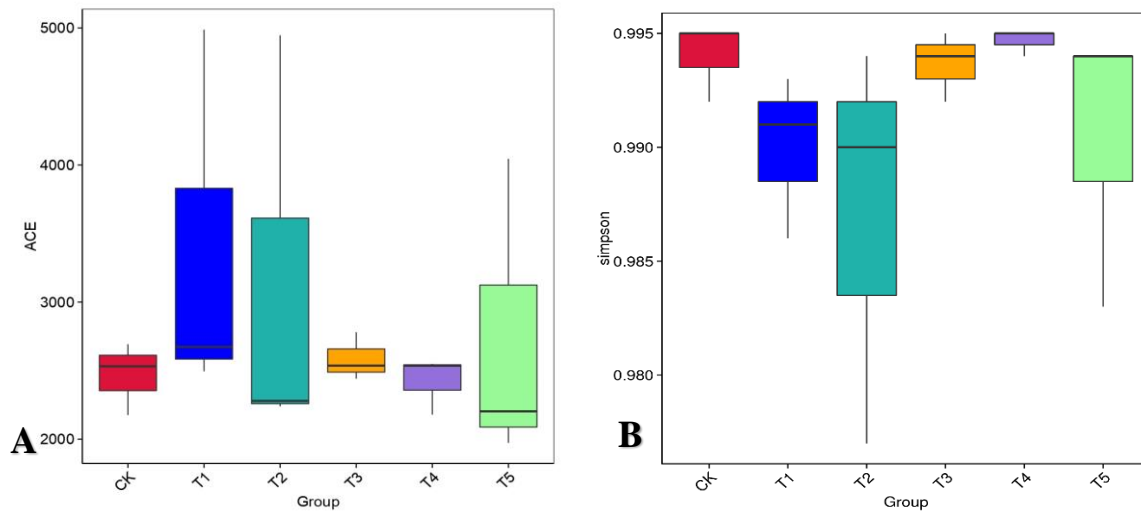


Influence of biochar on soil nutrients and associated rhizobacterial communities of mountainous apple trees in northern loess plateau China

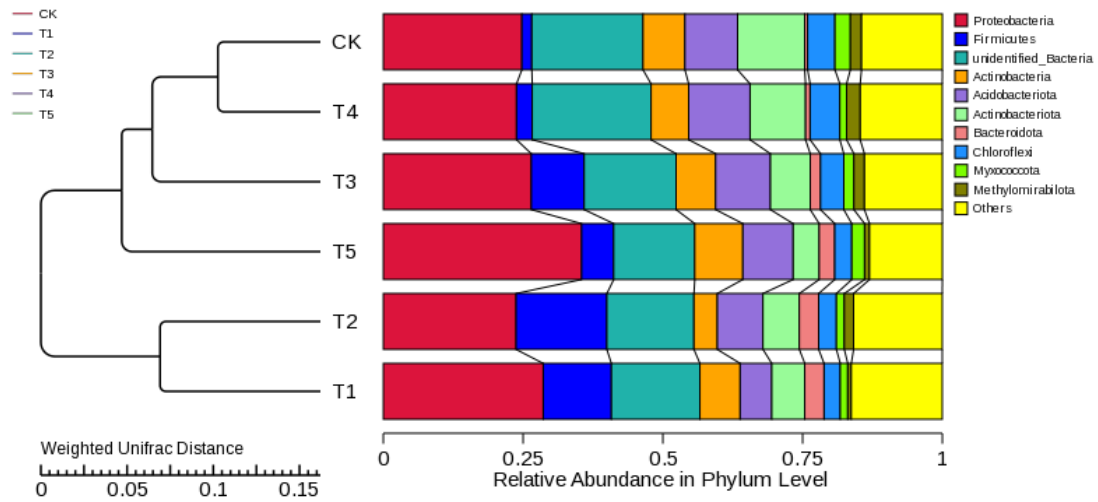
Supplementary Data



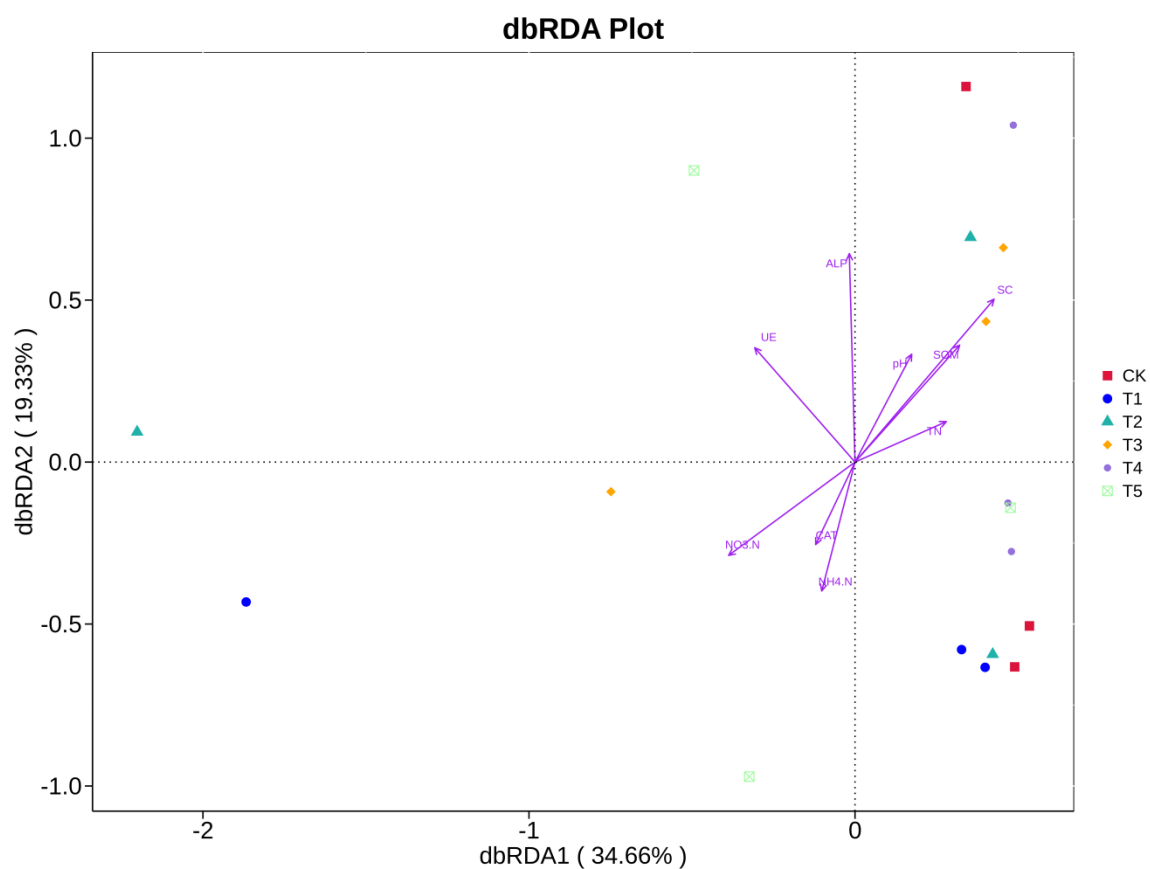
**Figure S1.** (A) Observed species numbers (B) Rank abundance curve in the treatments with and without biochar, different color line represents different treatments.



**Figure S2.** (A) ACE and (B) Simpson index of OTUs for soil samples where biochar was applied.



**Figure S3.** The UniFrac-based hierarchical cluster analysis of all treatments.



**Figure S4.** The dbRDA analysis is a distance-based redundancy analysis, which is suitable for any distance matrix. The calculation is based on the quantitative characteristics and environmental factors of different species in the sample.