



## Article

# Extracellular c-di-GMP Plays a Role in Biofilm Formation and Dispersion of *Campylobacter jejuni*

Bassam A. Elgamoudi, Kirstie S. Starr and Victoria Korolik \*

Institute for Glycomics, Griffith University, Gold Coast, QLD 4222, Australia

\* Correspondence: v.korolik@griffith.edu.au

**Abstract:** Cyclic diguanosine monophosphate (c-diGMP) is a ubiquitous second messenger involved in the regulation of many signalling systems in bacteria, including motility and biofilm formation. Recently, it has been reported that c-di-GMP was detected in *C. jejuni* DRH212; however, the presence and the role of c-di-GMP in other *C. jejuni* strains are unknown. Here, we investigated extracellular c-di-GMP as an environmental signal that potentially triggers biofilm formation in *C. jejuni* NCTC 11168 using a crystal violet-based assay, motility-based plate assay, RT-PCR and confocal laser scanning microscopy (CLSM). We found that, in presence of extracellular c-di-GMP, the biofilm formation was significantly reduced (>50%) and biofilm dispersion enhanced (up to 60%) with no effect on growth. In addition, the presence of extracellular c-di-GMP promoted chemotactic motility, inhibited the adherence of *C. jejuni* NCTC 11168-O to Caco-2 cells and upregulated the expression of *Cj1198* (*luxS*, encoding quorum sensing pathway component, autoinducer-2), as well as chemotaxis genes *Cj0284c* (*cheA*) and *Cj0448c* (*tlp6*). Unexpectedly, the expression of *Cj0643* (*cbrR*), containing a GGDEF-like domain and recently identified as a potential diguanylate cyclase gene, required for the synthesis of c-di-GMP, was not affected. Our findings suggest that extracellular c-di-GMP could be involved in *C. jejuni* gene regulation, sensing and biofilm dispersion.

**Citation:** Elgamoudi, B.A.; Starr, K.S.; Korolik, V. Extracellular c-di-GMP Plays a Role in Biofilm Formation and Dispersion of *Campylobacter jejuni*. *Microorganisms* **2022**, *10*, 2030. <https://doi.org/10.3390/microorganisms10102030>

Academic Editors: Stella Smith and Andreas E. Zautner

Received: 21 September 2022

Accepted: 12 October 2022

Published: 14 October 2022

**Publisher's Note:** MDPI stays neutral with regard to jurisdictional claims in published maps and institutional affiliations.



**Copyright:** © 2022 by the authors. Licensee MDPI, Basel, Switzerland. This article is an open access article distributed under the terms and conditions of the Creative Commons Attribution (CC BY) license (<https://creativecommons.org/licenses/by/4.0/>).

**Keywords:** *Campylobacter jejuni*; biofilm; dispersion; c-di-GMP

## 1. Introduction

*Campylobacter jejuni* is the most common foodborne pathogen which commonly causes bacterial diarrheal illness worldwide [1,2]. The common symptoms of *C. jejuni* gastroenteritis include mild or severe bloody diarrhoea, with abdominal pain and high fever, that frequently requires hospitalisation and antimicrobial treatment. *C. jejuni* can also cause post-infection complications such as meningitis, urinary tract infections and immune-mediated neuropathies (i.e., Guillian Barré Syndrome) [3,4]. *Campylobacter* spp. can be detected in water reservoirs, as commensals in the gastrointestinal tract of many animals including birds, and as virulent pathogens in humans. Animal reservoirs, including domestic and wild animals, are an important link in the chain of transmission of infectious pathogens to humans [5–8]. Contaminated animal food products, poultry, in particular, are considered to be a major source of bacteria causing human campylobacteriosis [9,10]. Moreover, *Campylobacter* spp (i.e., *C. jejuni*) display intrinsic resistance to many antimicrobial agents [11,12]. There is increasing resistance of *Campylobacter* spp. to many frequently prescribed antibiotics against campylobacters (i.e., erythromycin, and fluoroquinolones). Campylobacters are now listed on the WHO priority pathogens list for development of new antibiotics [13–15]. These pathogens have several potential survival mechanisms such as stress responses, viable but nonculturable state (VBNC), stationary phase survival mechanisms, and, importantly, biofilm formation [16–20]. *Campylobacter* species have reported to be capable of forming a mono-species biofilm and can integrate into a pre-existing biofilm [21–25]. Biofilms have been found to be involved in the transmission of

campylobacter disease through multi-microbial species communities, which can be as part of the normal microbiota in animal intestines [7,26,27]. Consequently, biofilms are becoming recognised as a contributing factor of *C. jejuni* transmission through the food chain [8,28]. For example, the role of biofilm formation of *C. jejuni* in antibiotics resistance has been previously demonstrated where antimicrobial resistance gene transferred between *C. jejuni* strains within biofilms [12,15,29].

One of the strategies for combating bacterial biofilms is the anti-biofilm compounds, natural or synthetic, which have antimicrobial and chemo-preventive properties [30,31]. Some of those compounds have anti-quorum sensing properties or the ability to modify cyclic di-GMP (c-di-GMP), a universal bacterial second sensory messenger [32]. Here, we focus on c-di-GMP which regulates many cellular biological processes such as biofilm formation, motility, cell cycle, and virulence factors [33]. Generally, low and high levels of intracellular c-di-GMP regulate the transition between motile (planktonic) and sessile states which contributes to slow growth and control biofilm formation [34–38]. Two enzymes that commonly regulate the intracellular c-di-GMP level, a diguanylate cyclase (DGCs) which synthesizes c-di-GMP by converting two GTP molecules to c-di-GMP, and the phosphodiesterase (PDE) enzyme, that degrades c-di-GMP into 5'-phosphoguanylyl-(3'-5')-guanosine (pGpG) and/or GMP [39]. c-di-GMP had been implicated in all stages of biofilm formation from attachment and proliferation, including dispersal. It also plays a role in the production of extracellular polymeric substances (EPS), as components involved in biofilm assembly, which mainly composed of polysaccharides (or known as exopolysaccharides), extracellular DNA (eDNA), protein adhesins, and [37,38,40–42]. Synthetic c-di-GMP has been shown to have an inhibitory effect on biofilm formation of *Staphylococcus mutans* and methicillin-resistant *Staphylococcus aureus* (MRSA) [43–45], whereas adding an extracellular c-di-GMP at high concentrations suppressed the biofilm formation [46]. Those studies suggested that using c-di-GMP in combination with other antimicrobial agents, may be a promising novel approach to treating or inhibiting biofilms [47]. Recently, the c-di-GMP signalling system has been reported in *C. jejuni* DRH212 [48]; however, the presence and the role of c-di-GMP in other *C. jejuni* strains, particularly *C. jejuni* NCTC 11168, are still unknown.

In this work, we demonstrate that c-di-GMP (extracellular c-di-GMP) inhibits and disperses biofilms formed by *C. jejuni* strains, and it appeared to promote chemotactic motility. Furthermore, the presence of c-di-GMP inhibited the adherence of *C. jejuni* NCTC 11168 to Caco-2 cells. Interestingly, RT-PCR showed that the presence of c-di-GMP upregulated *Cj1198* (*luxS*, a quorum sensing signal (autoinducer-2)), as well as chemotaxis genes *Cj0284c* (*CheA*) and *Cj0448c* (*tlp6*). Unexpectedly, the presence of extracellular c-di-GMP has not altered on gene expression of *Cj0643* (*cbrR*, *Campylobacter* bile resistance regulator). *CbrR* is the only gene that contains a GGDEF domain in *C. jejuni* NCTC 11168, which has been identified as a potential diguanylate cyclase that synthesizes c-di-GMP. Our findings suggest that c-di-GMP could be involved in *C. jejuni* biofilm dispersion.

## 2. Materials and Methods

### 2.1. *C. jejuni* Strains and Growth Conditions

Bacterial strains used in this study were *C. jejuni* NCTC 11168-O, *C. jejuni* 81116 (courtesy of Prof. D. G. Newell, Central Veterinary Laboratories, Surrey, UK), and *C. jejuni* 81-176 (courtesy of Prof. C. Szymanski, University of Alberta, Edmonton, AB, Canada) [49]. Cells were grown microaerobically (85% N<sub>2</sub>, 10% CO<sub>2</sub> and 5% O<sub>2</sub>) at 42 °C on Mueller-Hinton agar/broth (MHA/MHB) (Thermo Fisher Scientific Inc., Sydney, Australia) and in Mueller-Hinton broth (MHB), which was supplemented with Trimethoprim (2.5 µg mL<sup>-1</sup>) and Vancomycin (10 µg mL<sup>-1</sup>) (TV) (Sigma Aldrich, St. Louis, MO, USA).

## 2.2. Chemicals Used in This Study

Cyclic diguanylate monophosphate (c-di-GMP) compounds provide by InvivoGen (San Diego, CA, USA).

## 2.3. Biofilm Formation and Dispersion Assays

The assays were performed as previously described [50]. Briefly, overnight cultures of *C. jejuni* strains were diluted to an OD<sub>600</sub> (optical density at 600 nm) of 0.05, and 2 mL of cell suspension were dispensed into 24-wells plates (Geiner Bio-One, Monroe, NC USA). Extracellular c-di-GMP (ex-c-di-GMP) at different concentrations (50–400 µM) were added directly to the culture in the wells and incubated at 42 °C under microaerobic conditions for 48 h. For dispersion assay, *C. jejuni* cells were grown as described above, except no ex-c-di-GMP was added. Then, PBS containing the appropriate concentration of ex-c-di-GMP (50–400 µM) was added to the wells and plates were incubated for a further 24 h. Concentration of dispersed cells in the aqueous phase was measured (OD<sub>600</sub>) spectrophotometrically, and the remaining biofilm was assessed by crystal violet (CV) staining. After that, the plates were gently rinsed with water, dried at 55 °C for 30 min and stained using the modified CV staining method as described previously [51]. The percentage of biofilm inhibition and dispersion (%) was calculated as described by [50,52,53]. Data are presented as mean ± standard errors.

## 2.4. Swarm Assay

Cell suspensions of overnight cultures of *C. jejuni* were diluted with MHB to an absorbance of 0.1 at OD<sub>600</sub>. Then, 20 µL aliquots (untreated) and mixing with 200 µM of ex-c-di-GMP were spotted in the centre of swarm plates (0.35% MHA) and incubated at 42 °C under microaerophilic conditions. The plates were photographed at 24 h intervals for up to 96 h.

## 2.5. Effect of Extracellular c-di-GMP on *C. jejuni* Growth

*C. jejuni* cells were grown onto MHA plates supplemented with antibiotics (TV) overnight at 42 °C under microaerobic conditions. These plate cultures were used to inoculate 5 mL MHB-TV starter cultures which were then incubated with shaking (50 rpm) overnight microaerobically. The OD<sub>600</sub> of each starter culture was measured and the cultures were then diluted accordingly in fresh MHB-TV to give a final OD<sub>600</sub> of 0.03. Triplicate cultures of 5 mL in 15 mL tubes for untreated (control) and treated (with 200 µM of ex-c-di-GMP) samples were prepared and placed under microaerobic conditions shaking at 50 rpm. The OD<sub>600</sub> was measured at 0, 2, 6, 10, 12, 18 and 24 h using a spectrophotometer.

## 2.6. Auto-Aggregation Assay

The ability of bacteria to auto-aggregate was assessed as described by [21,48]. Briefly, *C. jejuni* cells were harvested from overnight MHA plates, washed with PBS and resuspended in PBS to OD<sub>600</sub> 0.8. To determine percentage auto-aggregation, two millilitres of bacterial suspension were placed into glass culture tubes with MHB and incubated at room temperature and monitored the decrease in OD<sub>600</sub> at different times (0, 2 and 24 h). The auto-aggregation percentage was calculated as follows:  $100 \times [1 - (\text{OD}_{\text{final}}/\text{OD}_{\text{initial}})]$  [54].

## 2.7. Adherence Assay with Cultured Caco-2 Cells In Vitro

Adherence rate was calculated against the size of the inoculum, (~10<sup>9</sup> bacterial cells per human cell in confluent cell culture) in the presence and absence of ex-c-di-GMP. The assay was performed with Caco-2 cells as previously described [55]. Briefly, Caco-2 cells were grown to confluence in a 24-well plate using the minimal essential medium (MEM, Gibco Laboratories, Grand Island, NY, USA) supplemented with 10% foetal bovine serum. Adherence assay was performed with a starting inoculum of ~10<sup>9</sup> bacteria per well. Ex-c-

di-GMP competition was pre-incubating *C. jejuni* with 200  $\mu$ M of ex-c-di-GMP. Experiments were repeated using biological replicates.

## 2.8. RT-PCR Analysis

The RT-PCR was performed as described previously in [50]. Briefly, *C. jejuni* 11168-O cells grown overnight at 42 °C with shaking at 50 rpm, under microaerobic conditions. Cells were centrifuged at 4000 rpm for 15 min to collect the pellets and then suspended in MHB and adjusted OD<sub>600</sub> to 1 ( $\sim 3 \times 10^9$  cells/mL) and subsequently challenged with 200  $\mu$ M of ex-c-di-GMP for 3-h. The bacterial survival was confirmed by viable cell counts after 3 h. The cells were centrifuged at 4000 rpm for 15 min and pellets were used for RNA extraction by Rneasy kit according to the manufacturer's protocol (Bioline, Eveleigh NSW, Australia) [56]. To synthesise cDNA, 0.5  $\mu$ g of extracted RNA was reverse transcribed via Omniscript® Reverse TranscriptionKit according to the manufacturer's protocol (Qiagen, Clayton, VIC, Australia). Real-time cycler conditions were 20 s at 95 °C, 3 s at 95 °C followed by 30 s at 60 °C with 40 cycles. All primers used in the present study are listed in (Table S1), which have ordered from (Sigma Aldrich, St. Louis, MO, USA). Clone Manager (version 9) (Scientific and Educational Software, Westminster, Co, USA) was used to design primers to amplify 100-bp fragments. Amplification plots and melt curves were analysed by Applied Biosystems 7500 Fast real-time PCR system. Samples were normalised using *gyrA* gene as a housekeeping gene [56–58]. All the samples, including controls, were analysed in triplicate and each experiment was biological replicates of each sample. Relative *n*-fold changes in the transcription of the examined genes between the treated and non-treated samples were calculated as previously described by [50].

## 2.9. Confocal Laser Scanning Microscopy

Biofilm preparation was previously described in [50]. *C. jejuni* cells, overnight cultures, were diluted to an OD<sub>600</sub> of 0.05, and 3 mL of each sample was placed into 6-well plate containing a glass coverslip to form the biofilm (Geiner Bio-One, Monroe, NC USA) as described above in dispersion assay. The plates were then incubated at 42 °C microaerobically for 48 h. Following incubation, MH broth was removed and replaced with PBS containing 200  $\mu$ M ex-c-di-GMP, and the plates were incubated for a further 3 h and then gently washed. The coverslips were fixed using 5% formaldehyde solution for 1 h at room temperature, gently washed and stained with two fluorescent dyes as follows: (I) Calcofluor White (CFW) (Sigma Aldrich, St. Louis, MO, USA), which labels polysaccharides by binding to N-acetylglucosamine and sialic acid residues, at 25  $\mu$ M final concentration for 20 min [59,60]; (II) coverslips were then mounted on slides under coverslips in DAPI (Sigma Aldrich, USA), containing 4',6-diamidino-2-phenylindole (DAPI), which labels DNA [50]. All samples were examined by CLSM (Nikon A1R+, Griffith University, Gold Coast, QLD, Australia), and images were processed using ImageJ analysis software version 1.5i (National Institutes of Health, Bethesda, MD, USA).

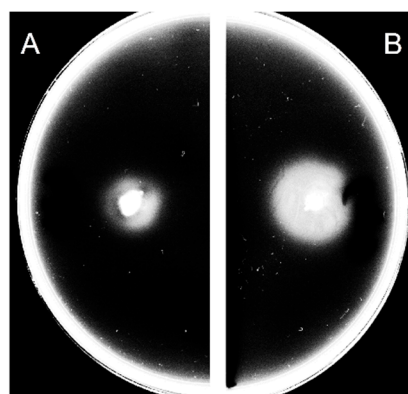
## 2.10. Statistical Analysis

The statistical significance of data generated in this study was determined using an unpaired two-tailed Student's *t*-test, which was carried out in GraphPad Prism (GraphPad Software, San Diego, CA, USA).  $P \leq 0.05$  was considered statistically significant.

# 3. Results

## 3.1. Extracellular c-di-GMP Affects the Motility of *C. jejuni*

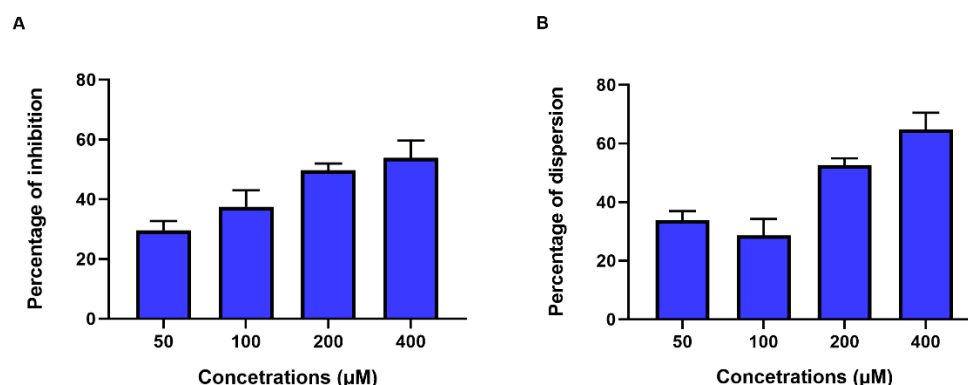
The examination of the relationship between c-di-GMP and the swarming motility of wild-type *C. jejuni* 11168-O showed that the presence of 200  $\mu$ M ex-c-di-GMP reduced the ability of *C. jejuni* 11168-O to swarm on soft agar (Figure 1). Ex-c-di-GMP did not affect the growth of *C. jejuni* 11168-O (Figure S1).



**Figure 1.** The swarming motility of *C. jejuni* 11168-O following 24 h incubation. (A) Wild type cells. (B) Wild type cells mixed with 200  $\mu$ M of ex-c-di-GMP.

### 3.2. Extracellular c-di-GMP Affects Biofilm Formation by *C. jejuni*

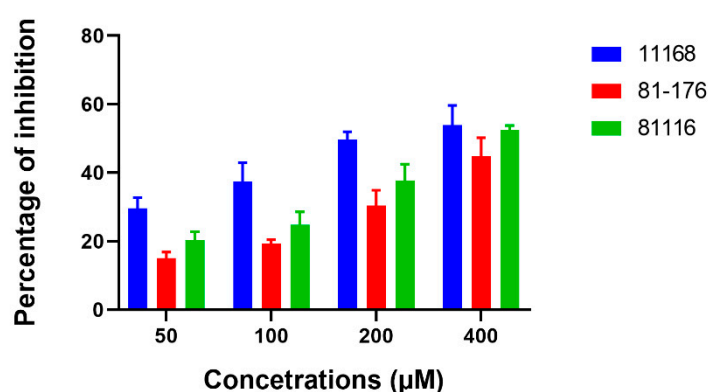
In order to investigate the effect of ex-c-di-GMP on biofilm formation, different concentrations of ex-c-di-GMP (50–400  $\mu$ M) were tested for their inhibitory effect on *C. jejuni* biofilm by the inhibition assay. The presence of ex-c-di-GMP had a significant inhibitory effect ( $P < 0.001$ , Table S2) on biofilm formation by *C. jejuni* 11168-O in a dose-dependent manner (Figure 2A) where 400  $\mu$ M reduced biofilm formation by 48% (Figure 2A). Furthermore, the dispersion assay was used to determine the effect on the dispersion of a formed biofilm. Ex-c-di-GMP was able to disrupt existing biofilm, where 400  $\mu$ M ex-c-di-GMP disrupted formed biofilm to greater than 60% extent (Figures 2B and S2).



**Figure 2.** Inhibition and dispersion of *C. jejuni* 11168-O biofilms in the presence of ex-c-di-GMP at different concentrations. (A). Inhibition of biofilm formation by different concentrations of ex-c-di-GMP. (B) Dispersion of the existing biofilm induced by different concentrations of ex-c-di-GMP. Data are presented as mean  $\pm$  standard error (3 or more biological repeats) of the percentage of inhibition (normalized to untreated control).

### 3.3. Extracellular c-di-GMP Affects Biofilm Formation by Different *Campylobacter* Strains

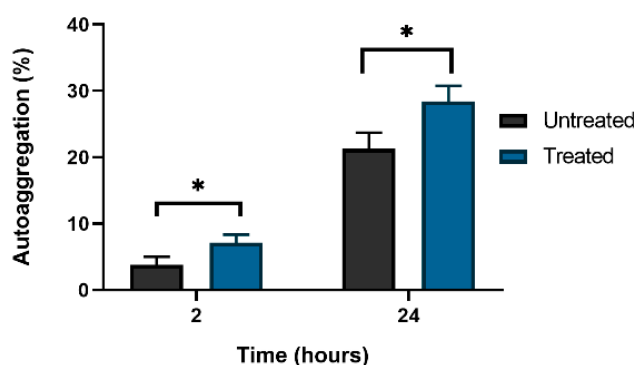
In order to determine if ex-c-di-GMP affected *C. jejuni* in a strain-specific manner, *C. jejuni* 11168-O, *C. jejuni* 81-176, and *C. jejuni* 81116, were used to demonstrate general inhibitory effect of ex-c-di-GMP on biofilm formation (Figure 3, Table S2).



**Figure 3.** Inhibition of biofilm formation by different *C. jejuni* strains in the presence of 50–400 µM ex-c-di-GMP. *C. jejuni* 11168-O (11168), *C. jejuni* 81-176 (81-176), and *C. jejuni* 81116 (81116). Data are presented as mean  $\pm$  standard error (3 or more biological repeats) of the percentage of inhibition (normalized to untreated control).

### 3.4. Extracellular c-di-GMP Treatment Effects Auto-Aggregation of *C. jejuni*

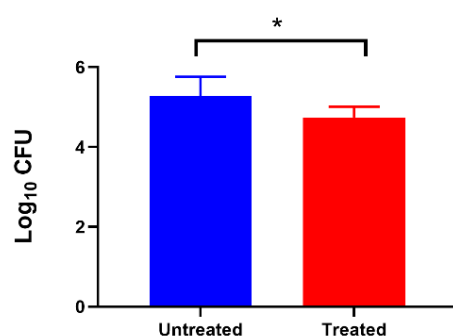
Untreated and cultures treated with ex-c-di-GMP were visually examined for visible cell–cell clumping and aggregation. Next, 200 µM ex-c-di-GMP-treated culture of *C. jejuni* 11168-O displayed significantly ( $P = 0.029$  and  $0.022$ , respectively) less auto-aggregation, compared to the untreated culture (Figure 4).



**Figure 4.** Percentage of *C. jejuni* auto-aggregation following ex-c-di-GMP treatment. Data are presented as mean  $\pm$  standard errors (3 or more biological repeats). The asterisk (\*) indicates a statistically significant difference compared to the untreated control ( $P < 0.05$ ).

### 3.5. Effect of Extracellular c-di-GMP on Adhesion of *C. jejuni* to Caco-2 Cell Lines

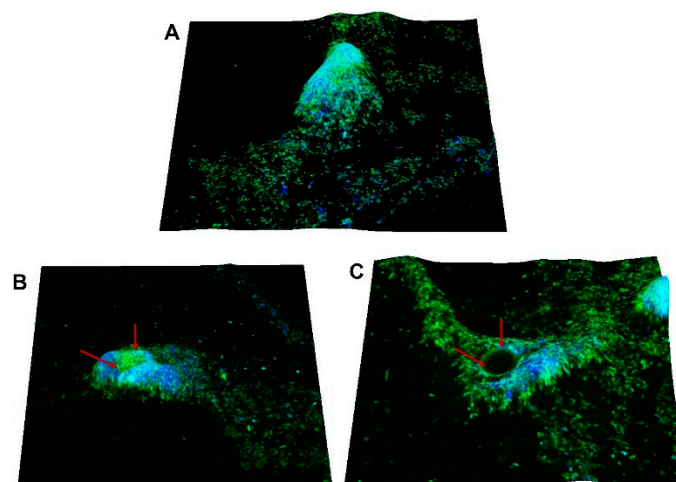
To understand the effect of ex-c-di-GMP on *C. jejuni* 11168-O adhesion ability, we performed a cell adherence assay using polarised mammalian cultured Caco-2 cells in the presence and absence of 200 µM ex-c-di-GMP. As shown in Figure 5, a significant reduction ( $P < 0.05$ ) was observed in adherence of *C. jejuni* 11168-O cells treated with 200 µM Ex-c-di-GMP, as compared with untreated cells to Caco2 cells.



**Figure 5.** Effect of ex-c-di-GMP on adhesion of *C. jejuni* to Caco-2 cell. Inhibition of cell adhesion in the presence of 200  $\mu$ M ex-c-di-GMP. Data are presented as mean  $\pm$  standard error (3 or more biological repeats) and were analysed using two-tailed Student's *t*-test. The asterisk (\*) indicates a statistically significant difference compared to the untreated control ( $P < 0.05$ ).

### 3.6. Dispersal Effect of Extracellular c-di-GMP on *C. jejuni* Biofilm Can Be Visualized

In order to observe the dispersal effect of ex-c-di-GMP on formed biofilm of *C. jejuni* 11168-O, the mature biofilm of *C. jejuni* 11168-O was treated with ex-c-di-GMP for 3 h (Figures 6 and S3) and then visualized using CLSM. The biofilm architecture showed monolayers of cells covered with the extracellular matrix, likely to be EPS [61]. The treatment of mature biofilm with ex-c-di-GMP appeared to reduce previously formed structures, and the formation of central void within the biofilm structure typical of the biofilm dispersal could be observed.

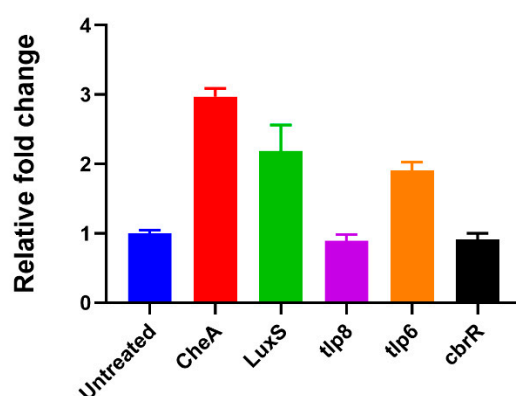


**Figure 6.** Void formation indicative of biofilm dispersion after exposure *C. jejuni* 11168-O biofilm to ex-c-di-GMP. (A) Representative CLSM images of biofilm grown for 48 h untreated (control). (B,C) Biofilm after exposure to 200  $\mu$ M ex-c-di-GMP. Calcofluor White (CFW) (green, polysaccharides) and DAPI (blue, DNA). Red arrow indicates central hollowing of microcolony (Scale bar = 10  $\mu$ m).

### 3.7. Extracellular c-di-GMP Dysregulates Specific Gene Expression

To elucidate the mechanism of action of ex-c-di-GMP, its effect on the expression levels of genes previously shown to be dysregulated during biofilm formation [62–66] was examined. The expression of genes involved in chemotactic motility and quorum sensing in *C. jejuni* 11168-O (*cheA*, *tlp6*, *tlp8* and *luxS*) were examined in the presence and absence of ex-c-di-GMP by RT-PCR. *CbrR* gene as the only gene in the *C. jejuni* genome encoding GGDEF-like motif, reported to be potentially involved in c-di-GMP synthesis [48] was also included. The expression of, *tlp6*, *LuxS* and *CheA* was upregulated in presence of 200  $\mu$ M ex-c-di-GMP by 1.9 to 3-fold (Figure 7); however, no significant effect on the expression of *tlp8* was observed. Surprisingly, no changes in gene expression of *cbrR* have been noted.





**Figure 7.** Analysis of the relative expression of genes in the presence of 200  $\mu$ M ex-c-di-GMP. The expression of *tlp6*, *tlp8*, *luxS*, *cheA* and *cbrR* genes relative to housekeeping gene *gryA* after incubation of *C. jejuni* 11168-O cells with 200  $\mu$ M ex-c-di-GMP for 3 h.

#### 4. Discussion

c-di-GMP signalling system is involved in the regulation of biofilm development stages from attachment to dispersal, where cells revert from the sessile lifestyle to planktonic and vice versa [26,38,67,68]. Interestingly, introduction of extracellular c-di-GMP (ex-c-di-GMP) has been shown to inhibit biofilm formation in some bacterial species including *S. aureus* and *S. mutans* [43,44,46,47]. Here, we demonstrate that extraneous c-di-GMP can reduce the formation *C. jejuni* biofilms as well as disperse formed biofilms in a dose-dependent manner. Ex-c-di-GMP at concentrations of  $\geq 50$   $\mu$ M was able to significantly trigger the disassembly of the formed biofilms. This is in agreement with previously reported observations of significant inhibitory effect of ex-c-di-GMP on biofilm formation by *S. aureus* and *S. mutans* [44,46,47].

Since our data show that ex-c-di-GMP treatment inhibited *C. jejuni* biofilms, we hypothesised that ex-c-di-GMP may also affect established biofilms. Indeed, ex-c-di-GMP treatment of formed *C. jejuni* biofilms led to a reduction of biofilm development by up to 60. Moreover, while the inhibitory effect of ex-c-di-GMP was observed for all strains tested, the extent of inhibition was strain-dependent. Furthermore, microscopic analysis showed that when the formed biofilm was treated with ex-c-di-GMP, formation of central voids within the biofilm could be observed. This is similar to the reports of void formation with hollow cavities, containing swimming bacterial cells (seeding dispersal cells), within *P. aeruginosa* biofilm during biofilm dispersion [69–71].

However, it is still unclear how the ex-c-di-GMP acts to inhibit *C. jejuni* biofilm or how it enters *C. jejuni* cells. One of the possibilities is that *C. jejuni* senses this external compound as a part of the quorum sensing pathway where it might trigger a signalling cascade, modulating gene expression. Here, we have shown that *luxS*, a quorum sensing pathway gene, present in many bacterial species and responsible for the production of autoinducer-2 (AI-2) [72–76], was upregulated in *C. jejuni* in presence of ex-c-di-GMP. Moreover, AI-2 can mediate auto-aggregation and has been linked to pathogenicity, drug resistance, and host immune evasion [77]. Auto-aggregation has been identified as one of the first steps of biofilm formation (cell–cell attachment) [77,78]. This is generally mediated by surface proteins or carbohydrates, particularly exopolysaccharides (i.e., poly-N-acetylglucosamine), which can act as auto-agglutinins [79]. We found that *C. jejuni* cells treated with 200  $\mu$ M ex-c-di-GMP show reduced aggregation, similar to that reported for *S. aureus* [46].

AI-2 had also been shown to influence chemotaxis and swarming motility [80–82]. Here, we found that chemotaxis associated genes *cheA* and *tlp6* are upregulated in presence of ex-c-di-GMP, in agreement with previous report where these genes were shown to be upregulated within formed biofilms [83]. Changes in levels of CheA, in particular,



are not surprising as it ultimately controls the directional rotation of the flagellar motor by changing its own phosphorylation levels, and thereby triggering changes in response regulators in the chemotaxis pathway [84]. Motility and flagellar gene expression in *C. jejuni* are indeed affected by *luxS* mutation Jeon et al. [85], where the mutation reduces expression of flagellin gene, *flaA* by 43% leading to reduction in motility. Here, we have shown that addition of ex-c-di-GMP affected *C. jejuni* swarming motility and enhanced the swarm zone achieved by the wild type cells, potentially as the result of overexpression of *luxS*. The change in motility in presence of ex-c-di-GMP could potentially reflect the transition between planktonic and biofilm states.

The ability of c-di-GMP to enter the *Campylobacter* cells can be reasonably postulated, as it has been reported to be able to enter eukaryotic cells [86]. Moreover, some microorganisms are known to secrete c-di-AMP or c-di-GMP as signalling molecules, such as *Bacillus subtilis*, *Listeria monocytogenes* and amoeba *Dictyostelium discoideum* [87–89]. For example, *B. subtilis* is able to secrete c-di-AMP which impacts biofilm formation and plant root colonization [35,87].

Such messengers can also be detected by the innate immune system and can activate the expression of interferon genes and thus act as pathogen-associated molecular patterns (PAMPs) during infection [90,91]. Indeed, ex-c-di-GMP had been suggested to be a novel immunostimulatory agent that can modulate the host immune response, as was demonstrated by its ability to inhibit *S. aureus* infection in a mouse model [44]. This is consistent with our data, showing adherence of *C. jejuni* cells to the Caco-2 epithelial cells is significantly decreased after treatment with 200  $\mu$ M ex-c-di-GMP, further suggesting that ex-c-di-GMP can potentially inhibit biofilm formation of biotic surfaces. However, the molecular bases for ex c-di-GMP inhibition of *C. jejuni* epithelial cell adherence are yet to be elucidated.

It is also possible that ex-c-di-GMP enters the cells by binding to the diguanylate cyclase (DGCs) which synthesizes c-di-GMP. Recently, the c-di-GMP signalling system has been reported in *C. jejuni* DRH212 [48], where *cbrR* gene was proposed to be a negative regulator of FlaA expression and motility. However, the presence and the role of c-di-GMP in other *C. jejuni* strains are still unknown, and comparative gene expression between biofilm and planktonic of *C. jejuni* 11168-O cells showed no differences in *cbrR* expression [66]. Similarly, no differences in expression of *cbrR* expression before and after treatment with ex-c-di-GMP have been observed in this study. It is possible, however, that this gene is constitutively expressed due to its potential role in bile resistance.

## 5. Conclusions

Together, these data show that ex-c-di-GMP inhibits the initial formation of biofilms and induces dispersion of formed biofilms of *C. jejuni*. It is possible to speculate that the bacterial cells that may not produce c-di-GMP, can nevertheless sense extraneously available molecules, such as QS molecules, during the pathogen-host-environment interactions. This study highlights the importance ex-c-di-GMP in regulating biofilm formation and dispersion by *C. jejuni* and indicates that the influence of external regulators in the life cycle of this organism, may need to be closely examined. Furthermore, the sensitivity of *C. jejuni* biofilms to ex-c-di-GMP makes them a promising drug target for controlling biofilm formation by using c-di-GMP analogues or similar small molecules [68].

**Supplementary Materials:** The following supporting information can be downloaded at: <https://www.mdpi.com/article/10.3390/microorganisms10102030/s1>, Figure S1: The growth rate of *C. jejuni* with and without 200  $\mu$ M ex-c-di-GMP. Figure S2: Dispersion of *C. jejuni* 11168-O biofilms in the presence of ex-c-di-GMP at different concentrations. Figure S3: CLSM images of biofilm dispersion associated with ex-c-di-GMP. Table S1: Primer sets were used in this study. Table S2: Effect of ex-c-di-GMP on biofilm formation by *C. jejuni* strains.

**Author Contributions:** V.K. and B.A.E. conceived and designed the study; B.A.E. and K.S.S. performed the experiments; V.K. and B.A.E. analysed the data and prepared the manuscript. All authors reviewed the manuscript. All authors have read and agreed to the published version of the manuscript.

**Funding:** This project was partially supported by Griffith University, Institute for Glycomics.

**Institutional Review Board Statement:** Not applicable.

**Informed Consent Statement:** Not applicable.

**Data Availability Statement:** All the data is included in the article and the supplementary material.

**Conflicts of Interest:** Authors declare that there is no conflict of interest regarding the publication of this article.

## References

1. Buzby, J.C.; Allos, B.M.; Roberts, T. The economic burden of Campylobacter-associated Guillain-Barré syndrome. *J. Infect. Dis.* **1997**, *176*, S192–S197.
2. World Health Organization. *The Global View of Campylobacteriosis: Report of an Expert Consultation*; World Health Organization: Utrecht, The Netherlands, WHO Newsletters. 2013.
3. Salloway, S.; Mermel, L.; Seamans, M.; Aspinall, G.; Shin, J.N.; Kurjanczyk, L.; Penner, J. Miller-Fisher syndrome associated with *Campylobacter jejuni* bearing lipopolysaccharide molecules that mimic human ganglioside GD3. *Infect. Immun.* **1996**, *64*, 2945–2949.
4. van den Berg, B.; Walgaard, C.; Drenthen, J.; Fokke, C.; Jacobs, B.C.; van Doorn, P.A. Guillain-Barre syndrome: Pathogenesis, diagnosis, treatment and prognosis. *Nat. Rev. Neurol.* **2014**, *10*, 469–482.
5. Whitley, H.; van den Akker, B.; Giglio, S.; Bentham, R. The role of environmental reservoirs in human campylobacteriosis. *Int. J. Environ. Res. Public Health* **2013**, *10*, 5886–5907.
6. Ellis-Iversen, J.; Ridley, A.; Morris, V.; Sowa, A.; Harris, J.; Atterbury, R.; Sparks, N.; Allen, V. Persistent environmental reservoirs on farms as risk factors for *Campylobacter* in commercial poultry. *Epidemiol. Infect.* **2012**, *140*, 916–924.
7. Carrascosa, C.; Raheem, D.; Ramos, F.; Saraiva, A.; Raposo, A. Microbial biofilms in the food industry—A comprehensive review. *Int. J. Environ. Res. Public Health* **2021**, *18*, 2014.
8. Bronowski, C.; James, C.E.; Winstanley, C. Role of environmental survival in transmission of *Campylobacter jejuni*. *FEMS Microbiol. Lett.* **2014**, *356*, 8–19.
9. Backert, S.; Tegtmeyer, N.; Cróinín, T.Ó.; Boehm, M.; Heimesaat, M.M. Human campylobacteriosis. In *Campylobacter*; Elsevier: Amsterdam, The Netherlands, 2017; pp. 1–25.
10. Igwaran, A.; Okoh, A.I. Human campylobacteriosis: A public health concern of global importance. *Heliyon* **2019**, *5*, e02814.
11. Luangtongkum, T.; Jeon, B.; Han, J.; Plummer, P.; Logue, C.M.; Zhang, Q. Antibiotic Resistance in *Campylobacter*: Emergence, Transmission and Persistence; *Future Microbiol.* 2009: 189–200.
12. Ma, L.; Konkel, M.E.; Lu, X. Antimicrobial resistance gene transfer from *Campylobacter jejuni* in mono-and dual-species biofilms. *Appl. Environ. Microbiol.* **2021**, *87*, e00659–e00621.
13. Smith, J.L.; Fratamico, P.M. Fluoroquinolone resistance in *Campylobacter*. *J. Food Prot.* **2010**, *73*, 1141–1152.
14. World Health Organization. *WHO Publishes List of Bacteria for Which New Antibiotics Are Urgently Needed*; World Health Organization: Geneva, Switzerland, WHO Newsletters. 2017.
15. García-Sánchez, L.; Melero, B.; Jaime, I.; Rossi, M.; Ortega, I.; Rovira, J. Biofilm formation, virulence and antimicrobial resistance of different *Campylobacter jejuni* isolates from a poultry slaughterhouse. *Food Microbiol.* **2019**, *83*, 193–199.
16. Magajna, B.A.; Schraft, H. *Campylobacter jejuni* biofilm cells become viable but non-culturable (VBNC) in low nutrient conditions at 4 °C more quickly than their planktonic counterparts. *Food Control* **2015**, *50*, 45–50.
17. Lv, R.; Wang, K.; Feng, J.; Heeney, D.D.; Liu, D.; Lu, X. Detection and quantification of viable but non-culturable *Campylobacter jejuni*. *Front. Microbiol.* **2020**, *10*, 2920.
18. Pitkänen, T. Review of *Campylobacter* spp. in drinking and environmental waters. *J. Microbiol. Methods* **2013**, *95*, 39–47.
19. Stetsenko, V.; Efimochkina, N.; Pichugina, T. Growth and persistence of *Campylobacter jejuni* in foodstuffs. *Bull. Exp. Biol. Med.* **2019**, *166*(6), 759–765.

20. Kim, S.-H.; Chelliah, R.; Ramakrishnan, S.R.; Perumal, A.S.; Bang, W.-S.; Rubab, M.; Daliri, E.B.-M.; Barathikannan, K.; Elahi, F.; Park, E. Review on stress tolerance in *Campylobacter jejuni*. *Front. Cell. Infect. Microbiol.* **2020**, *10*, 596570. <https://doi.org/10.3389/fcimb.2020.596570>
21. Reuter, M.; Mallett, A.; Pearson, B.M.; van Vliet, A.H. Biofilm formation by *Campylobacter jejuni* is increased under aerobic conditions. *Appl. Environ. Microbiol.* **2010**, *76*, 2122–2128.
22. Hanning, I.; Jarquin, R.; Slavik, M. *Campylobacter jejuni* as a secondary colonizer of poultry biofilms. *J. Appl. Microbiol.* **2008**, *105*, 1199–1208.
23. Hanning, I.; Donoghue, D.; Jarquin, R.; Kumar, G.; Aguiar, V.; Metcalf, J.; Reyes-Herrera, I.; Slavik, M. *Campylobacter* biofilm phenotype exhibits reduced colonization potential in young chickens and altered in vitro virulence. *Poult. Sci.* **2009**, *88*, 1102–1107.
24. Alary, M.; Nadeau, D. An outbreak of *Campylobacter enteritis* associated with a community water supply. *Can. J. Public Health.* **1989**, *81*, 268–271.
25. Sung, K.; Khan, S. Biofilm development by *Campylobacter Jejuni*. *Biofilms in the Food Environment*. 2015, *24*; 29–50.
26. Ica, T.; Caner, V.; Istanbulu, O.; Nguyen, H.D.; Ahmed, B.; Call, D.R.; Beyenal, H. Characterization of mono- and mixed-culture *Campylobacter jejuni* biofilms. *Appl. Environ. Microbiol.* **2012**, *78*, 1033–1038.
27. Zhong, X.; Wu, Q.; Zhang, J.; Ma, Z.; Wang, J.; Nie, X.; Ding, Y.; Xue, L.; Chen, M.; Wu, S. *Campylobacter jejuni* biofilm formation under aerobic conditions and inhibition by ZnO nanoparticles. *Front. Microbiol.* **2020**, *11*, 207.
28. Joshua, G.P.; Guthrie-Irons, C.; Karlyshev, A.; Wren, B. Biofilm formation in *Campylobacter jejuni*. *Microbiology* **2006**, *152*, 387–396.
29. Iovine, N.M. Resistance mechanisms in *Campylobacter jejuni*. *Virulence* **2013**, *4*, 230–240.
30. Mishra, R.; Panda, A.K.; De Mandal, S.; Shakeel, M.; Bisht, S.S.; Khan, J. Natural anti-biofilm agents: Strategies to control biofilm-forming pathogens. *Front. Microbiol.* **2020**, *11*, 2640.
31. Elgamoudi, B.A.; Korolik, V. *Campylobacter* biofilms: Potential of natural compounds to disrupt *Campylobacter jejuni* transmission. *Int. J. Mol. Sci.* **2021**, *22*, 12159.
32. Roy, R.; Tiwari, M.; Donelli, G.; Tiwari, V. Strategies for combating bacterial biofilms: A focus on anti-biofilm agents and their mechanisms of action. *Virulence* **2018**, *9*, 522–554.
33. Jenal, U.; Reinders, A.; Lori, C. Cyclic di-GMP: Second messenger extraordinaire. *Nat. Rev. Microbiol.* **2017**, *15*, 271–284.
34. Jones, C.J.; Utada, A.; Davis, K.R.; Thongsomboon, W.; Sanchez, D.Z.; Banakar, V.; Cegelski, L.; Wong, G.C.; Yildiz, F.H. C-di-GMP regulates motile to sessile transition by modulating MshA pili biogenesis and near-surface motility behavior in *Vibrio cholerae*. *PLoS Pathog.* **2015**, *11*, e1005068.
35. Chen, L.H.; Koseoglu, V.K.; Guvener, Z.T.; Myers-Morales, T.; Reed, J.M.; D’Orazio, S.E.; Miller, K.W.; Gomelsky, M. Cyclic di-GMP-dependent signaling pathways in the pathogenic Firmicute *Listeria monocytogenes*. *PLoS Pathog.* **2014**, *10*, e1004301.
36. Kalia, D.; Mery, G.; Nakayama, S.; Zheng, Y.; Zhou, J.; Luo, Y.; Guo, M.; Roembke, B.T.; Sintim, H.O. Nucleotide, c-di-GMP, c-di-AMP, cGMP, cAMP, (p)ppGpp signaling in bacteria and implications in pathogenesis. *Chem. Soc. Rev.* **2013**, *42*, 305–341.
37. Romling, U.; Galperin, M.Y.; Gomelsky, M. Cyclic di-GMP: The first 25 years of a universal bacterial second messenger. *Microbiol. Mol. Biol. Rev.* **2013**, *77*, 1–52.
38. Chua, S.L.; Liu, Y.; Yam, J.K.; Chen, Y.; Vejborg, R.M.; Tan, B.G.; Kjelleberg, S.; Tolker-Nielsen, T.; Givskov, M.; Yang, L. Dispersed cells represent a distinct stage in the transition from bacterial biofilm to planktonic lifestyles. *Nat. Commun.* **2014**, *5*, 4462.
39. Ghosh, A.; Jayaraman, N.; Chatterji, D. Small-molecule inhibition of bacterial biofilm. *ACS Omega* **2020**, *5*, 3108–3115.
40. Poulin, M.B.; Kuperman, L.L. Regulation of biofilm exopolysaccharide production by cyclic di-guanosine monophosphate. *Front. Microbiol.* **2021**, *12*:730980.
41. Reichhardt, C.; Parsek, M.R. Confocal laser scanning microscopy for analysis of *Pseudomonas aeruginosa* biofilm architecture and matrix localization. *Front. Microbiol.* **2019**, *10*, 677.
42. Gomelsky, M.; Galperin, M.Y. Bacterial second messengers, cGMP and c-di-GMP, in a quest for regulatory dominance. *EMBO J.* **2013**, *32*, 2421–2423.
43. Brouillette, E.; Hyodo, M.; Hayakawa, Y.; Karaolis, D.K.; Malouin, F. 3',5'-cyclic diguanylic acid reduces the virulence of biofilm-forming *Staphylococcus aureus* strains in a mouse model of mastitis infection. *Antimicrob. Agents Chemother.* **2005**, *49*, 3109–3113.
44. Karaolis, D.K.; Means, T.K.; Yang, D.; Takahashi, M.; Yoshimura, T.; Muraille, E.; Philpott, D.; Schroeder, J.T.; Hyodo, M.; Hayakawa, Y. Bacterial c-di-GMP is an immunostimulatory molecule. *J. Immunol.* **2007**, *178*, 2171–2181.
45. Wolfe, A.J.; Visick, K.L. Get the message out: Cyclic-Di-GMP regulates multiple levels of flagellum-based motility. *J. Bacteriol.* **2008**, *190*, 463–475.
46. David, K.R.K.; Rashid, M.H.; Chythanya, R.; Luo, W.; Hyodo, M.; Hayakawa, Y. c-di-GMP (3'-5'-Cyclic Diguanylic Acid) inhibits *Staphylococcus aureus* cell-cell interactions and biofilm formation. *Antimicrob. Agents Chemother.* **2005**, *49*, 1029–1038.
47. Yan, W.; Qu, T.; Zhao, H.; Su, L.; Yu, Q.; Gao, J.; Wu, B. The effect of c-di-GMP (3'-5'-cyclic diguanylic acid) on the biofilm formation and adherence of *Streptococcus mutans*. *Microbiol. Res.* **2010**, *165*, 87–96.
48. Cox, C.A.; Bogacz, M.; El Abbar, F.M.; Browning, D.D.; Hsueh, B.Y.; Waters, C.M.; Lee, V.T.; Thompson, S.A. The *Campylobacter jejuni* response regulator and Cyclic-Di-GMP binding CbrR is a novel regulator of flagellar motility. *Microorganisms* **2021**, *10*, 86.
49. Day, Hartley-Tassell, L.E.; Shewell, L.K.; King, R.M.; Tram, G.; Day, S.K.; Semchenko, E.A.; Korolik, V. Variation of chemosensory receptor content of *Campylobacter jejuni* strains and modulation of receptor gene expression under different in vivo and in vitro growth conditions. *BMC Microbiol.* **2012**, *12*, 128.

50. Elgamoudi, B.A.; Taha, T.; Korolik, V. Inhibition of *Campylobacter jejuni* biofilm formation by D-amino acids. *Antibiotics* **2020**, *9*, 836.
51. Tram, G.; Korolik, V.; Day, C.J. MBDS solvent: An improved method for assessment of biofilms. *Adv. Microbiol.* **2013**, *3*, 5.
52. Singh, N.; Patil, A.; Prabhune, A.; Goel, G. Inhibition of quorum-sensing-mediated biofilm formation in *Cronobacter sakazakii* strains. *Microbiology* **2016**, *162*, 1708–1714.
53. Bai, J.-R.; Wu, Y.-P.; Elena, G.; Zhong, K.; Gao, H. Insight into the effect of quinic acid on biofilm formed by *Staphylococcus aureus*. *RSC Adv.* **2019**, *9*, 3938–3945.
54. Sorroche, F.G.; Spesia, M.B.; Zorreguieta, Á.; Giordano, W. A positive correlation between bacterial autoaggregation and biofilm formation in native *Sinorhizobium meliloti* isolates from Argentina. *Appl. Environ. Microbiol.* **2012**, *78*, 4092–4101.
55. Day, C.J.; King, R.M.; Shewell, L.K.; Tram, G.; Najnin, T.; Hartley-Tassell, L.E.; Wilson, J.C.; Fleetwood, A.D.; Zhulin, I.B.; Korolik, V. A direct-sensing galactose chemoreceptor recently evolved in invasive strains of *Campylobacter jejuni*. *Nat. Commun.* **2016**, *7*, 13206.
56. Xie, Y.; He, Y.; Irwin, P.L.; Jin, T.; Shi, X. Antibacterial activity and mechanism of action of zinc oxide nanoparticles against *Campylobacter jejuni*. *Appl. Environ. Microbiol.* **2011**, *77*, 2325–2331.
57. Yan, X. Omics, *Microbial Modeling and Technologies for Foodborne Pathogens*; DEStech Publications, Inc. Lancaster, PA, USA. 2012.
58. Wösten, M.M.; Wagenaar, J.A.; van Putten, J.P. The FlgS/FlgR two-component signal transduction system regulates the fla regulon in *Campylobacter jejuni*. *J. Biol. Chem.* **2004**, *279*, 16214–16222.
59. Drozd, M.; Chandrashekhar, K.; Rajashekara, G. Polyphosphate-mediated modulation of *Campylobacter jejuni* biofilm growth and stability. *Virulence* **2014**, *5*, 680–690.
60. McLennan, M.K.; Ringoir, D.D.; Fridrich, E.; Svensson, S.L.; Wells, D.H.; Jarrell, H.; Szymanski, C.M.; Gaynor, E.C. *Campylobacter jejuni* biofilms up-regulated in the absence of the stringent response utilize a calcofluor white-reactive polysaccharide. *J. Bacteriol.* **2008**, *190*, 1097–1107.
61. Hou, J.; Veeregowda, D.H.; van de Belt-Gritter, B.; Busscher, H.J.; van der Mei, H.C. Extracellular polymeric matrix production and relaxation under fluid shear and mechanical pressure in *Staphylococcus aureus* biofilms. *Appl. Environ. Microbiol.* **2018**, *84*, e01516–e01517.
62. Zhang, L.; Li, S.; Liu, X.; Wang, Z.; Jiang, M.; Wang, R.; Xie, L.; Liu, Q.; Xie, X.; Shang, D. Sensing of autoinducer-2 by functionally distinct receptors in prokaryotes. *Nat. Commun.* **2020**, *11* (1), 1–3.
63. Cloak, O.M.; Solow, B.T.; Briggs, C.E.; Chen, C.-Y.; Fratamico, P.M. Quorum sensing and production of autoinducer-2 in *Campylobacter* spp., *Escherichia coli* O157: H7, and *Salmonella enterica* serovar Typhimurium in foods. *Appl. Environ. Microbiol.* **2002**, *68*, 4666–4671.
64. Bezek, K.; Kurinčič, M.; Knauder, E.; Klančnik, A.; Raspor, P.; Bucar, F.; Smole Možina, S. Attenuation of adhesion, biofilm formation and quorum sensing of *Campylobacter jejuni* by *Euodia ruticarpa*. *Phytother Res.* **2016**, *30*, 1527–1532.
65. Tram, G.; Klare, W.P.; Cain, J.A.; Mourad, B.; Cordwell, S.J.; Day, C.J.; Korolik, V. Assigning a role for chemosensory signal transduction in *Campylobacter jejuni* biofilms using a combined omics approach. *Sci. Rep.* **2019**, *10*(1), 1–8.
66. Tram, G.; Klare, W.P.; Cain, J.A.; Mourad, B.; Cordwell, S.J.; Korolik, V.; Day, C.J. RNA sequencing data sets identifying differentially expressed transcripts during *Campylobacter jejuni* biofilm formation. *Microbiol. Resour. Announc.* **2020**, *9*, e00982–e00919.
67. Rumbaugh, K.P.; Sauer, K. Biofilm dispersion. *Nat. Rev. Microbiol.* **2020**, *18*, 571–586.
68. Sintim, H.O.; Smith, J.A.; Wang, J.; Nakayama, S.; Yan, L. Paradigm shift in discovering next-generation anti-infective agents: Targeting quorum sensing, c-di-GMP signaling and biofilm formation in bacteria with small molecules. *Future Med. Chem.* **2010**, *2*, 1005–1035.
69. Kaplan, J.B. Biofilm dispersal: Mechanisms, clinical implications, and potential therapeutic uses. *J. Dent. Res.* **2010**, *89*, 205–218.
70. Ma, L.; Conover, M.; Lu, H.; Parsek, M.R.; Bayles, K.; Wozniak, D.J. Assembly and development of the *Pseudomonas aeruginosa* biofilm matrix. *PLoS Pathog.* **2009**, *5*, e1000354.
71. Goodwine, J.; Gil, J.; Doiron, A.; Valdes, J.; Solis, M.; Higa, A.; Davis, S.; Sauer, K. Pyruvate-depleting conditions induce biofilm dispersion and enhance the efficacy of antibiotics in killing biofilms in vitro and in vivo. *Sci. Rep.* **2019**, *9*(1), 1–16.
72. Tereň, M.; Shagieva, E.; Vondrakova, L.; Viktorova, J.; Svarcova, V.; Demnerova, K.; Michova, H.T. Mutagenic strategies against luxS gene affect the early stage of biofilm formation of *Campylobacter jejuni*. *J. Appl. Genet.* **2021**, *63*, 145–157.
73. Pünning, C.; Su, Y.; Lu, X.; Gözl, G. Molecular mechanisms of *Campylobacter* biofilm formation and quorum sensing. *Fight. Campylobacter Infect.* **2021**, 431; 293–319. <https://doi.org/10.1007/978-3-030-65481-8>
74. Solano, C.; Echeverez, M.; Lasa, I. Biofilm dispersion and quorum sensing. *Curr. Opin. Microbiol.* **2014**, *18*, 96–104.
75. Waters, C.M.; Lu, W.; Rabinowitz, J.D.; Bassler, B.L. Quorum sensing controls biofilm formation in *Vibrio cholerae* through modulation of Cyclic Di-GMP levels and repression of vpsT. *J. Bacteriol.* **2008**, *190*, 2527–2536.
76. Elvers, K.T.; Park, S.F. Quorum sensing in *Campylobacter jejuni*: Detection of a luxS encoded signalling molecule. *Microbiology* **2002**, *148*, 1475–1481.
77. Nwoko, E.-s.Q.; Okeke, I.N. Bacteria autoaggregation: How and why bacteria stick together. *Biochem. Soc. Trans.* **2021**, *49*, 1147–1157.
78. Trunk, T.; Khalil, H.S.; Leo, J.C. Bacterial autoaggregation. *AIMS Microbiol.* **2018**, *4*, 140.
79. Formosa-Dague, C.; Feuillie, C.; Beaussart, A.; Derclaye, S.; Kucharikova, S.; Lasa, I.; Van Dijck, P.; Dufrene, Y.F. Sticky matrix: Adhesion mechanism of the staphylococcal polysaccharide intercellular adhesin. *ACS Nano* **2016**, *10*, 3443–3452.

80. Laganenka, L.; Colin, R.; Sourjik, V. Chemotaxis towards autoinducer 2 mediates autoaggregation in *Escherichia coli*. *Nat. Commun.* **2016**, *7*(1), 1–11.
81. Ramić, D.; Klančnik, A.; Možina, S.S.; Dogsa, I. Elucidation of the AI-2 communication system in the food-borne pathogen *Campylobacter jejuni* by whole-cell-based biosensor quantification. *Biosens. Bioelectron.* **2022**, *30*, 114439. <https://doi.org/10.1016/j.bios.2022.114439>.
82. Song, S.; Wood, T.K. The primary physiological roles of autoinducer 2 in *Escherichia coli* are chemotaxis and biofilm formation. *Microorganisms* **2021**, *9*, 386.
83. Xu, L.; Xin, L.; Zeng, Y.; Yam, J.K.H.; Ding, Y.; Venkataramani, P.; Cheang, Q.W.; Yang, X.; Tang, X.; Zhang, L.-H. A cyclic di-GMP-binding adaptor protein interacts with a chemotaxis methyltransferase to control flagellar motor switching. *Sci. Signal.* **2016**, *9*, ra102.
84. Korolik, V. The role of chemotaxis during *Campylobacter jejuni* colonisation and pathogenesis. *Curr. Opin. Microbiol.* **2019**, *47*, 32–37.
85. Jeon, B.; Itoh, K.; Misawa, N.; Ryu, S. Effects of quorum sensing on flaA transcription and autoagglutination in *Campylobacter jejuni*. *Microbiol. Immunol.* **2003**, *47*, 833–839.
86. Steinberger, O.; Lapidot, Z.; Ben-Ishai, Z.; Amikam, D. Elevated expression of the CD4 receptor and cell cycle arrest are induced in Jurkat cells by treatment with the novel cyclic dinucleotide 3', 5'-cyclic diguanylic acid. *FEBS Lett.* **1999**, *444*, 125–129.
87. Townsley, L.; Yannarell, S.M.; Huynh, T.N.; Woodward, J.J.; Shank, E.A. Cyclic di-AMP acts as an extracellular signal that impacts *Bacillus subtilis* biofilm formation and plant attachment. *mBio* **2018**, *9*, e00341–e00318.
88. Unterholzner, L. Beyond sensing DNA: A role for cGAS in the detection of extracellular cyclic di-nucleotides. *EMBO Rep.* **2019**, *20*, e47970.
89. Chen, Z.-h.; Schaap, P. Secreted cyclic di-GMP induces stalk cell differentiation in the eukaryote *Dictyostelium discoideum*. *J. Bacteriol.* **2016**, *198*, 27–31.
90. Schaap, P. Cyclic di-nucleotide signaling enters the eukaryote domain. *IUBMB Life* **2013**, *65*, 897–903.
91. Amarante-Mendes, G.P.; Adjemian, S.; Branco, L.M.; Zanetti, L.C.; Weinlich, R.; Bortoluci, K.R. Pattern recognition receptors and the host cell death molecular machinery. *Front. Immunol.* **2018**, *9*, 2379.