

Supplementary Material

Supplementary Table S1: Search strategy used in all the databases

Database	Search strategy
PubMed	(Liver Abscess, Pyogenic[MeSH Terms]) OR (Pyogenic Hepatic Abscess*[Title/Abstract]) OR (Pyogenic Hepatic Abscess*[Other Term]) OR (Pyogenic Liver Abscess*[Title/Abstract]) OR (Pyogenic Liver Abscess*[Other Term]) OR (Liver Abscess*[Other Term]) OR (Liver Abscess*[Title/Abstract]) OR (Hepatic Abscess*[Title/Abstract]) OR (Hepatic Abscess*[Other Term]) OR (Liver Abscess[MeSH Terms]) AND (<i>Klebsiella pneumoniae</i> [MeSH Terms]) OR (<i>Klebsiella pneumoniae</i> [Title/Abstract]) OR (<i>Klebsiella pneumoniae</i> [Other Term]) OR (<i>K.pneumoniae</i> [Title/Abstract]) OR (<i>K.pneumoniae</i> [Other Term]) OR (<i>K. pneumoniae</i> [Title/Abstract]) OR (<i>K. pneumoniae</i> [Other Term]) OR (<i>Klebsiella</i> *[Title/Abstract]) OR (<i>Klebsiella</i> *[Other Term])
Embase (Ovid)	("liver abscess pyogenic" or "pyogenic hepatic abscess*" or "pyogenic liver abscess*" or "liver abscess*" or "hepatic abscess*").ti,ab,tw. AND (" <i>klebsiella pneumoniae</i> " or " <i>k.pneumoniae</i> " or " <i>k. pneumoniae</i> " or <i>klebsiella</i> *).ti,ab,tw.
Scopus	TITLE-ABS-KEY ("liver abscess pyogenic" or "pyogenic hepatic abscess*" or "pyogenic liver abscess*" or "liver abscess*" or "hepatic abscess*") AND TITLE-ABS-KEY (" <i>klebsiella pneumoniae</i> " or " <i>k.pneumoniae</i> " or " <i>k. pneumoniae</i> " or <i>klebsiella</i> *)
Cochrane	("liver abscess pyogenic" or "pyogenic hepatic abscess*" or "pyogenic liver abscess*" or "liver abscess*" or "hepatic abscess*"):ti,ab,kw. AND (" <i>klebsiella pneumoniae</i> " or " <i>k.pneumoniae</i> " or " <i>k. pneumoniae</i> " or <i>klebsiella</i> *):ti,ab,kw.

Supplementary Table S2: Quality assessment of all included observational studies (n=16) using the Newcastle-Ottawa Scale

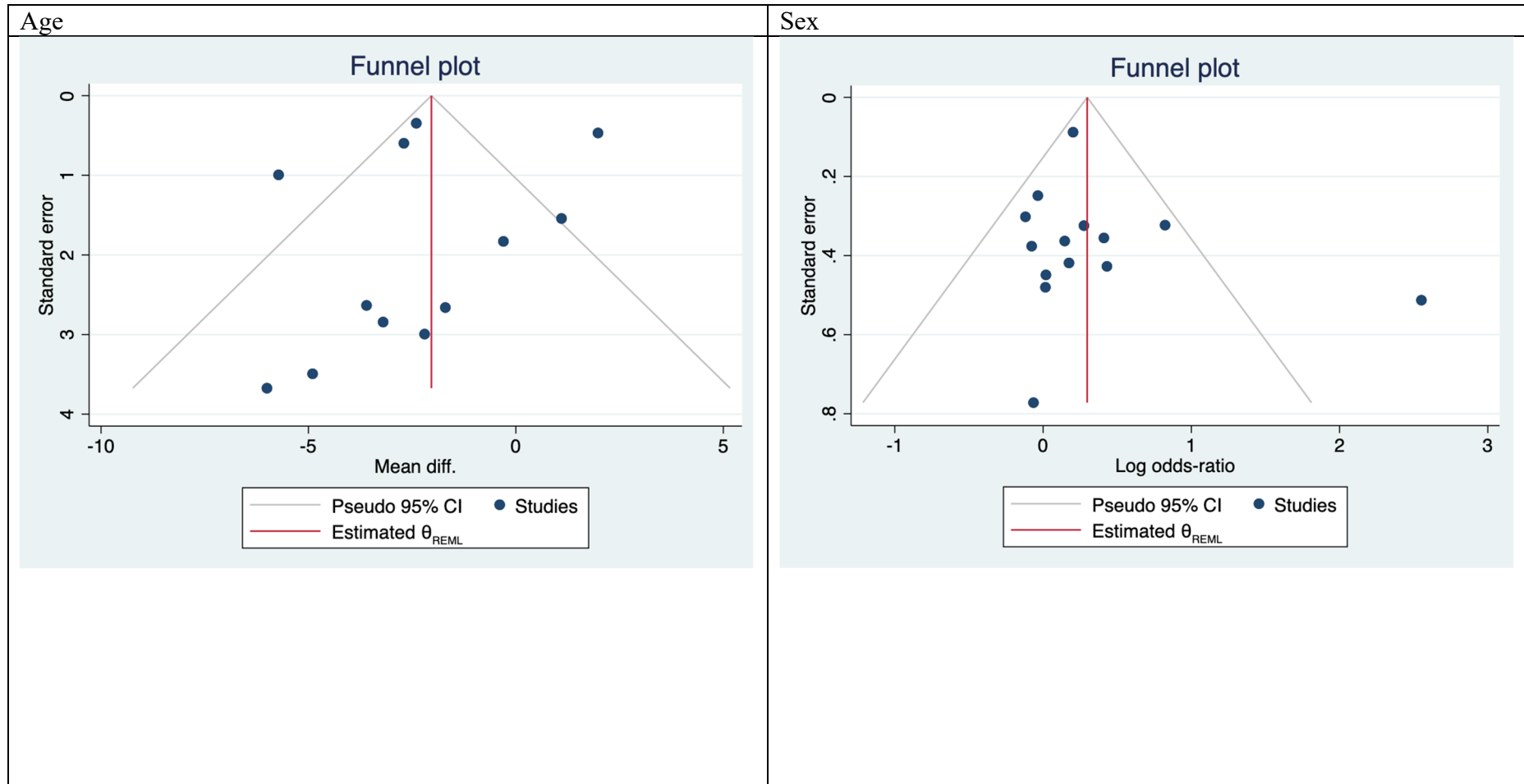
No	First author, year	Selection				Comparability	Outcome			Quality score*
		Representativeness of cohort	Selection of non-exposed cohort	Ascertainment of exposure	Demonstration that current outcome was not present at start of study	Comparability of cohorts on basis of study design or analysis	Assessment of outcome	Length of follow-up	Adequacy of follow-up	
1	Kong, 2017	1	1	1	0	0	1	1	1	6
2	Yin, 2021	1	1	1	0	0	1	1	1	6
3	Chen, 2007	1	1	1	0	2	1	1	1	8
4	Wang, 2013	1	1	1	0	0	1	1	1	6
5	Kim, 2007	1	1	1	0	0	1	1	1	6
6	Alsaif, 2011	1	1	1	0	0	1	1	1	6
7	Lee, 2011	1	1	1	0	2	1	1	1	8
8	Li, 2010	1	1	1	0	0	1	1	1	6
9	Baek, 2017	1	1	1	0	2	1	1	1	8
10	Huang, 2012	1	1	1	1	2	1	1	1	9
11	Chen, 2014	1	1	1	0	0	1	1	1	6
12	Shelat, 2015	1	1	1	0	0	1	1	1	6
13	Hui, 2007	1	1	1	0	0	1	1	1	6
14	Lee, 2020	1	1	1	0	2	1	1	1	8
15	Qian, 2016	1	1	1	0	0	1	1	1	6
16	Mousa, 2021	1	1	1	0	1	1	1	1	7

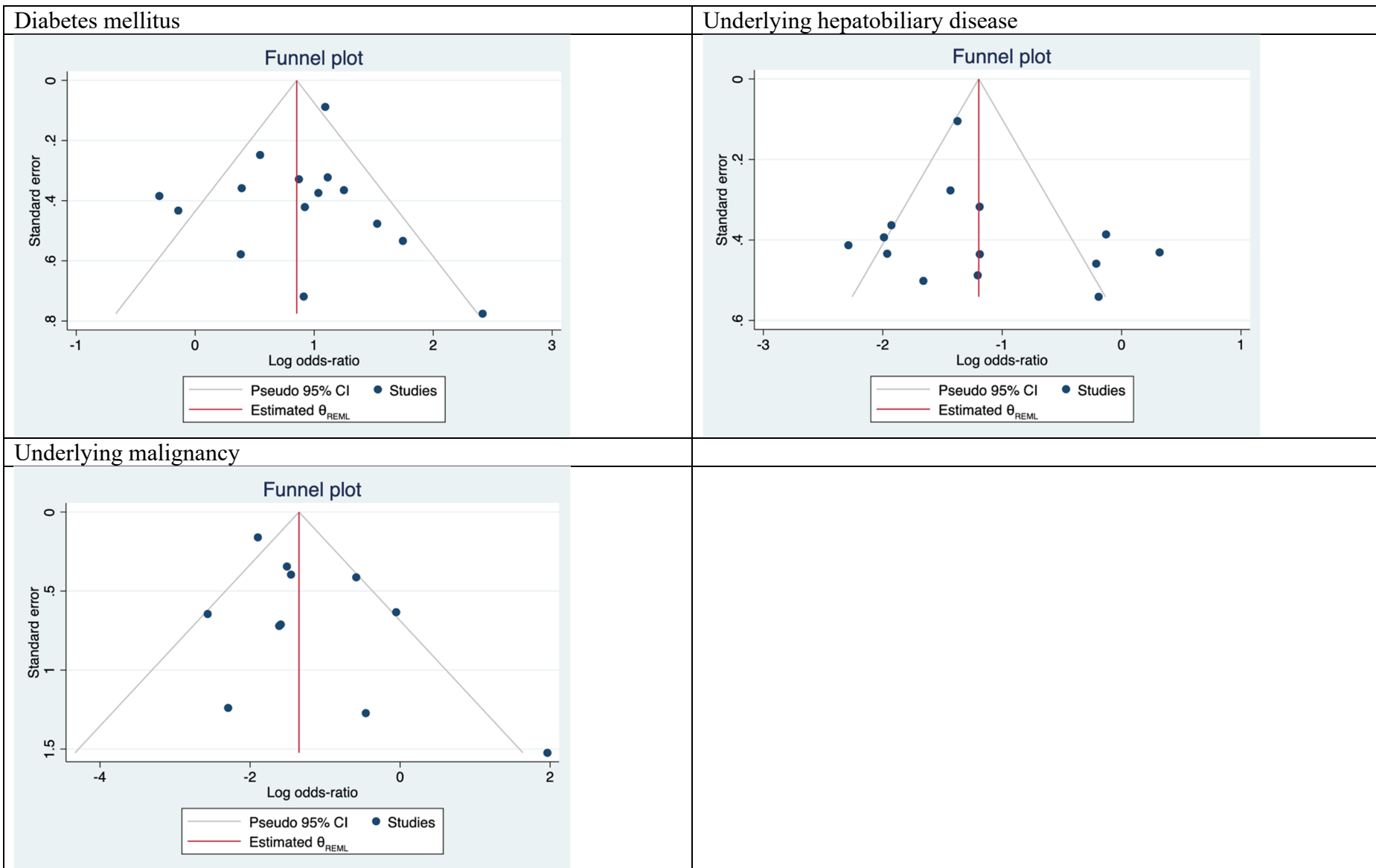
*Quality score of <3: Low quality of evidence, 3-6: Moderate quality of evidence, ≥ 7 : High quality of evidence

Supplementary Figures

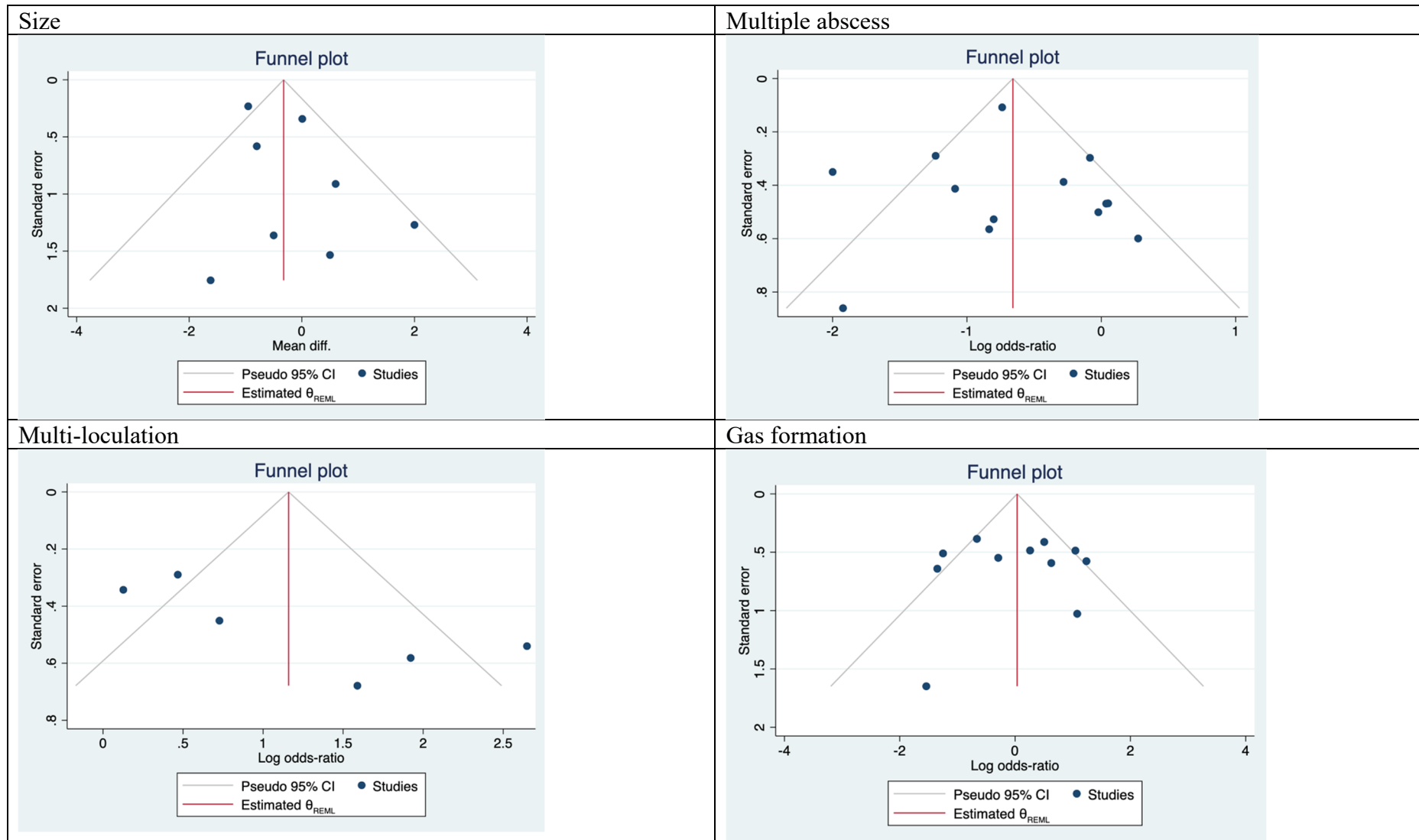
Supplementary Figure S1: Funnel plots of included studies (A) Clinical demographics, (B) Radiological findings and (C) Clinical outcomes

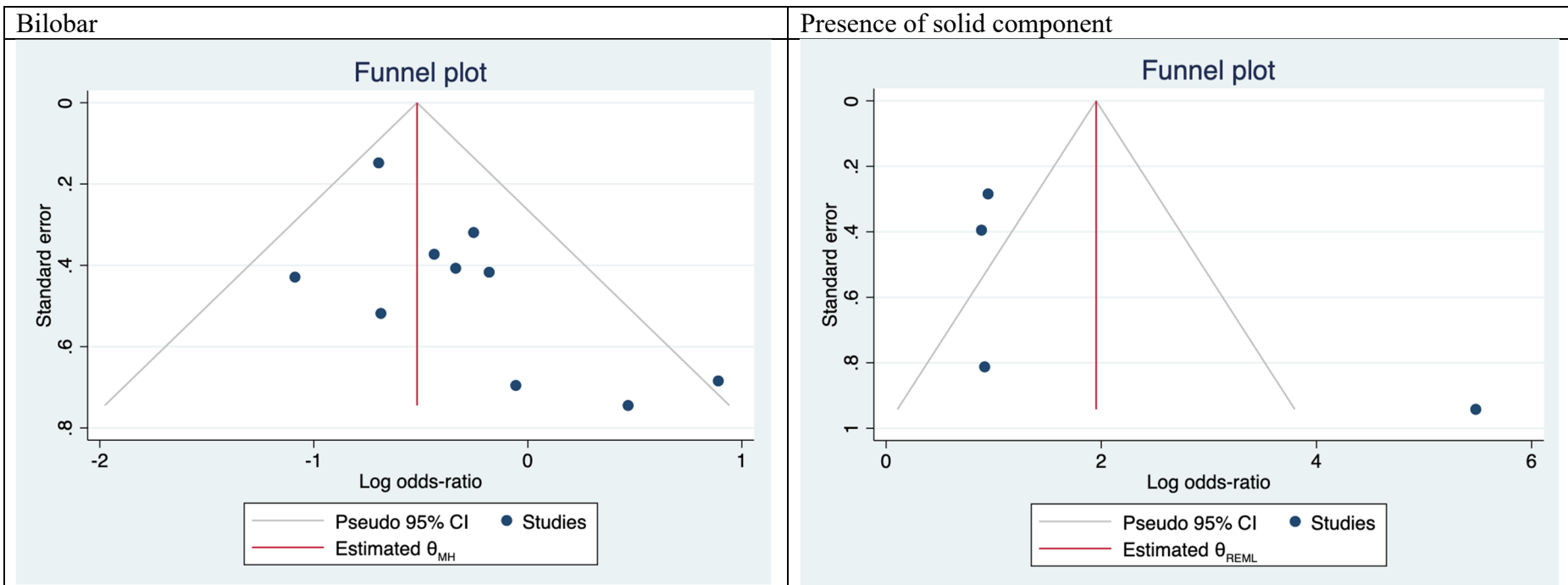
(A) Clinical demographics



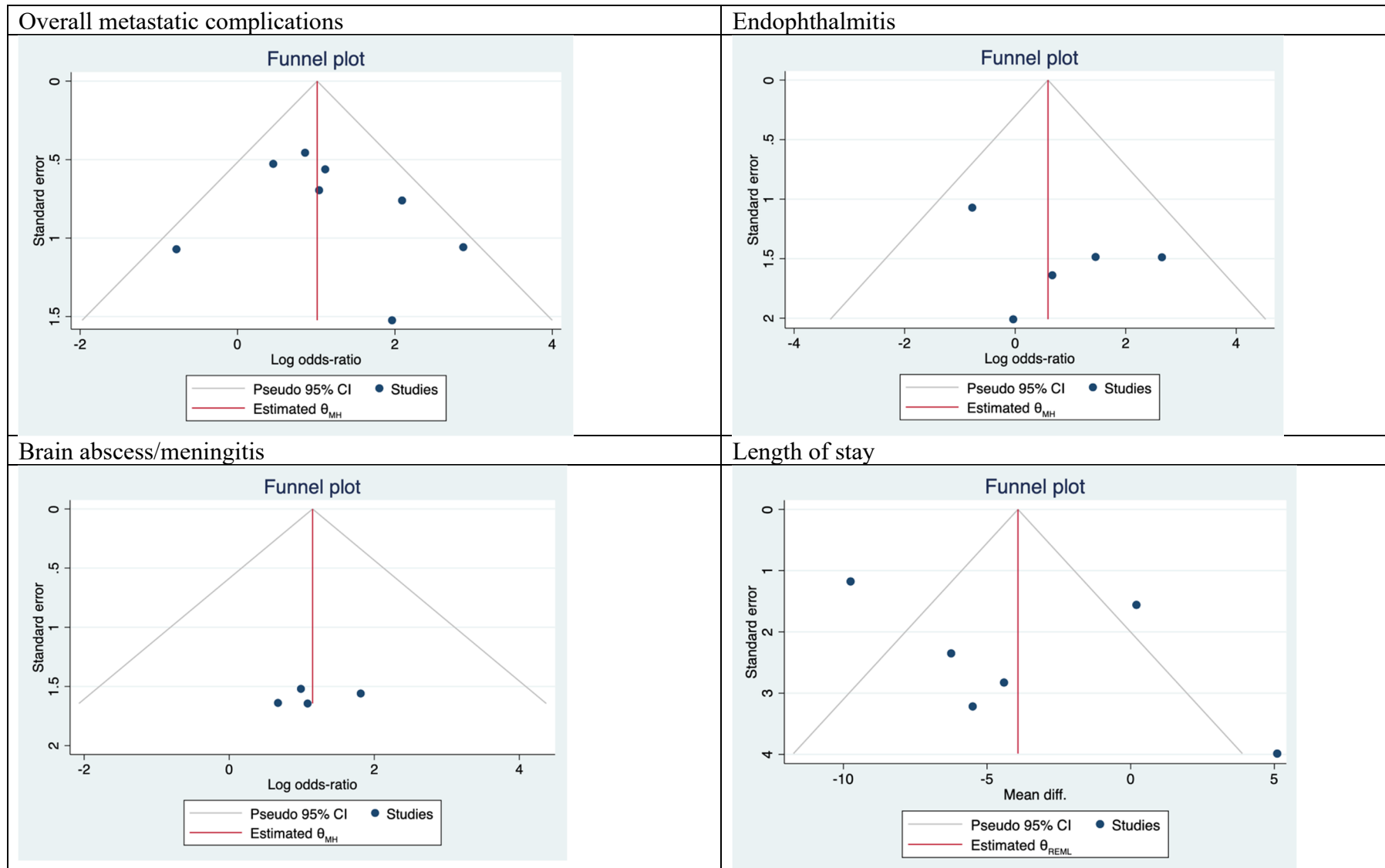


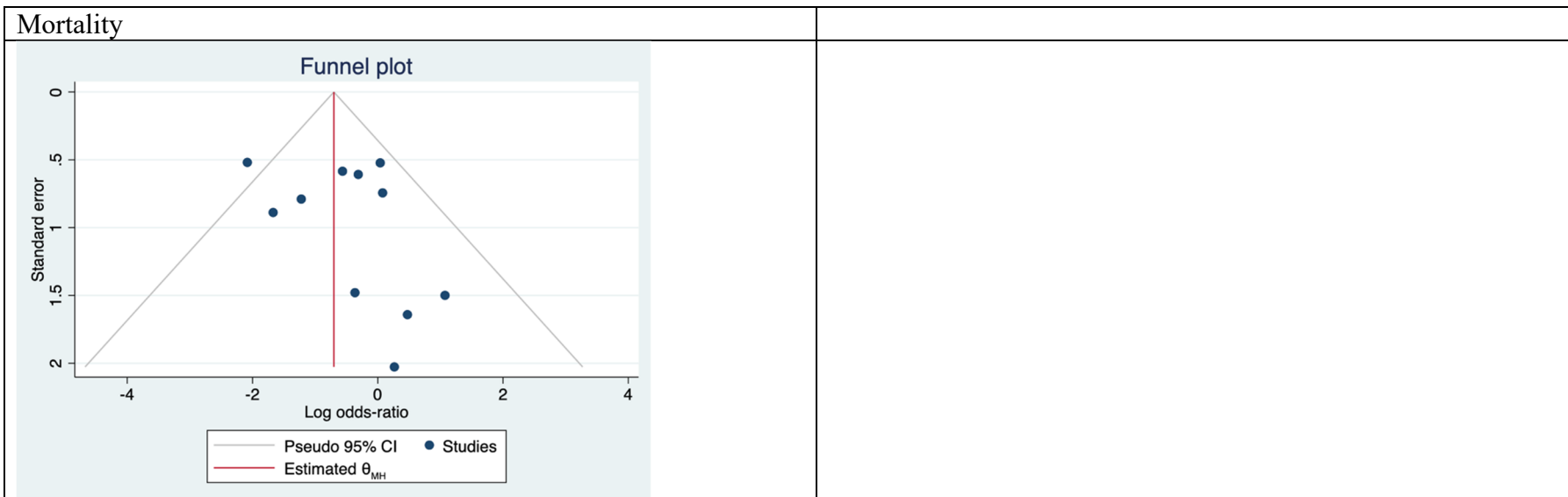
(B) Radiological findings





(C) Clinical outcomes



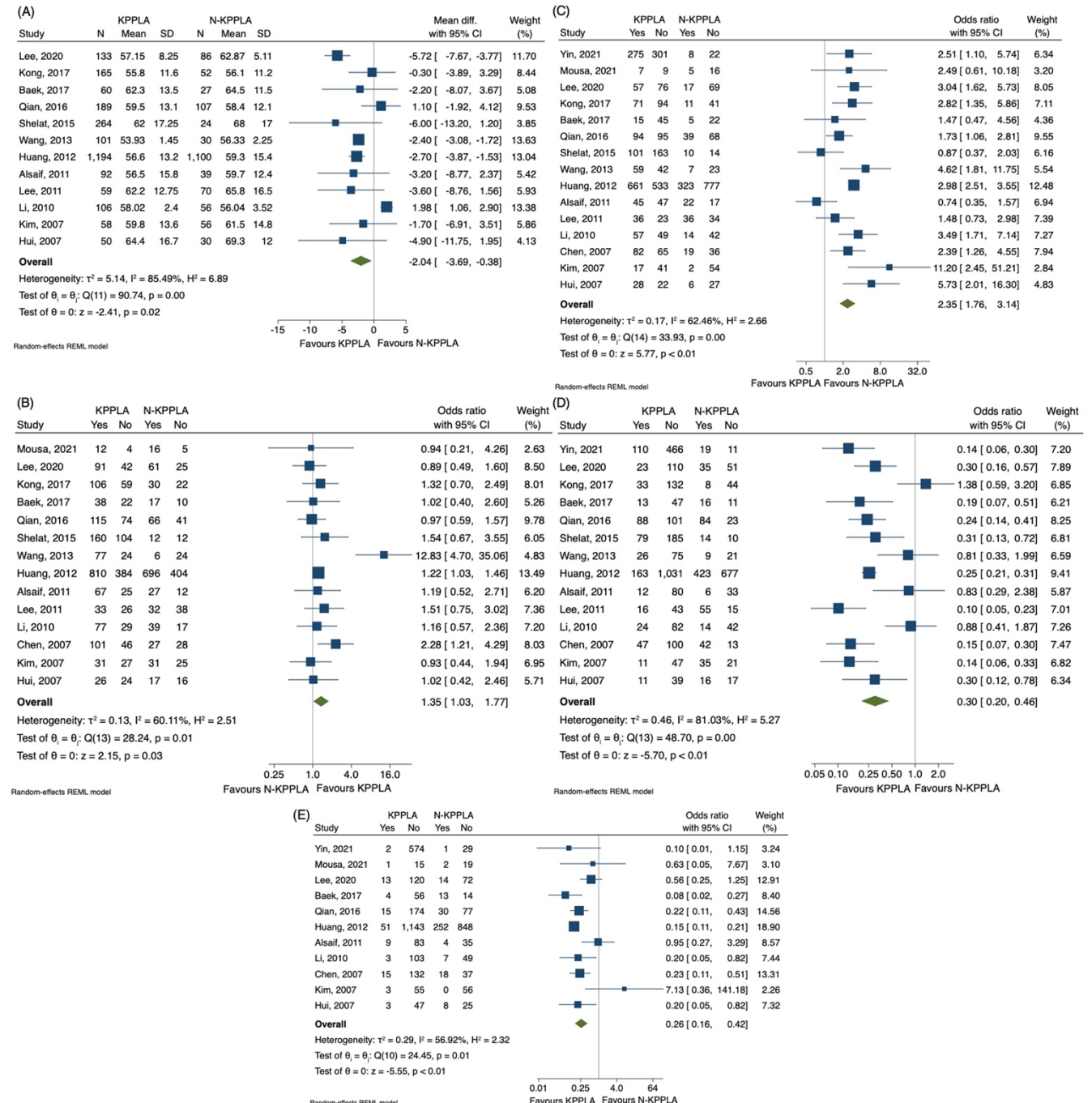


Supplementary Figure S2: Clinical demographics comparing KPPLA versus N-KPPLA: (A)

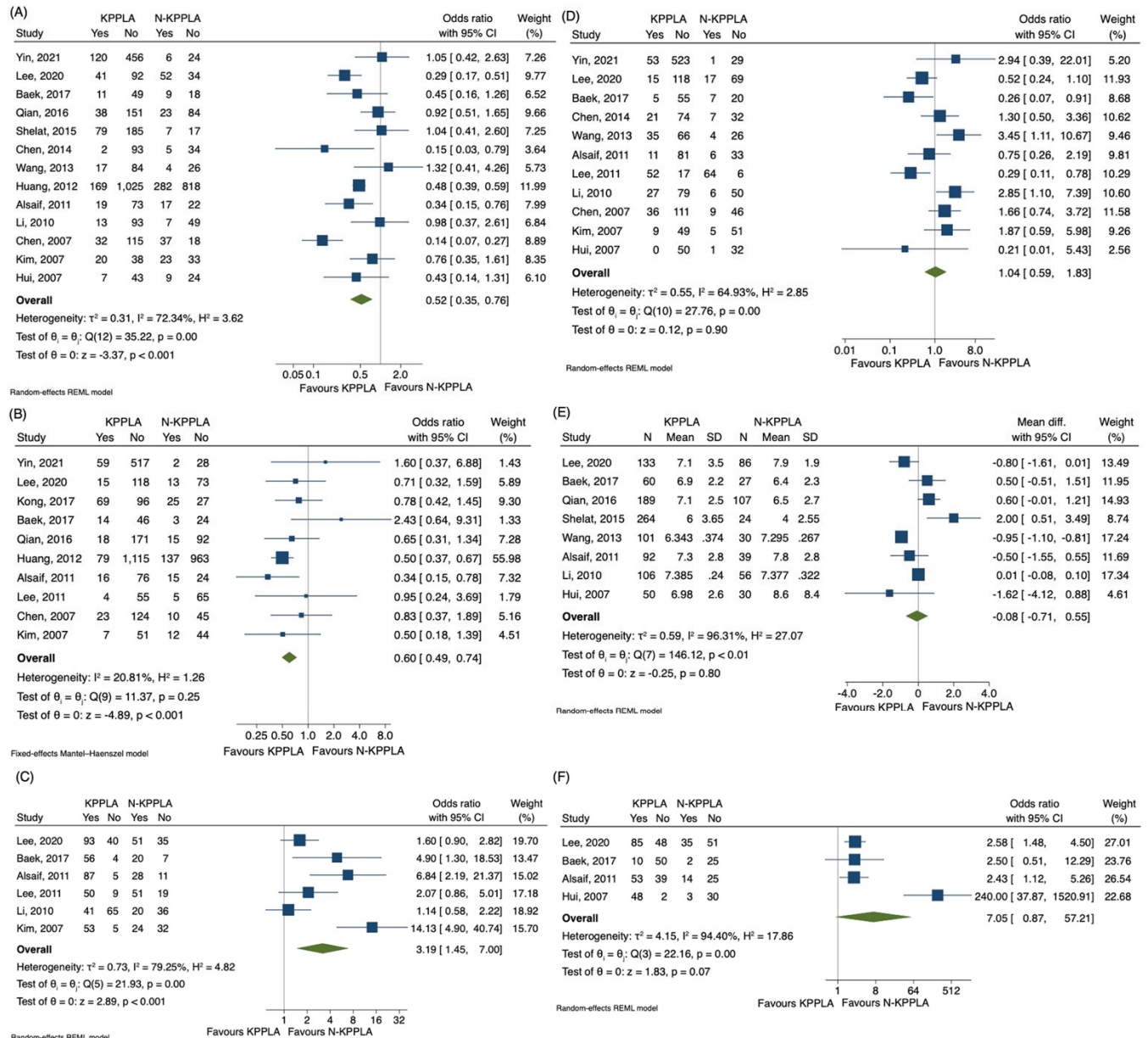
Age, (B) Sex, (C) Diabetes mellitus, (D) History of hepatobiliary disease and (E) History of

malignancy. KPPLA: Klebsiella pneumoniae pyogenic liver abscess; N-KPPLA: Non-

KPPLA



Supplementary Figure S3: Radiological findings comparing KPPLA versus non-KPPLA: (A) Multiple abscess, (B) Bilobar location, (C) Multi-loculation, (D) Gas formation, (E) Size, and (F) Presence of solid component. KPPLA: Klebsiella pneumoniae pyogenic liver abscess; N-KPPLA: Non-KPPLA



Supplementary Figure S4: Clinical outcomes of KPPLA versus N-KPPLA: (A) Length of stay, (B) Overall metastatic infections, (C) Endophthalmitis, (D) Brain abscess/meningitis, and (E) Mortality. KPPLA: Klebsiella pneumoniae pyogenic liver abscess; N-KPPLA: Non-KPPLA

