

Glycerol monolaurate

Figure S1. The structure of glycerol monolaurate.

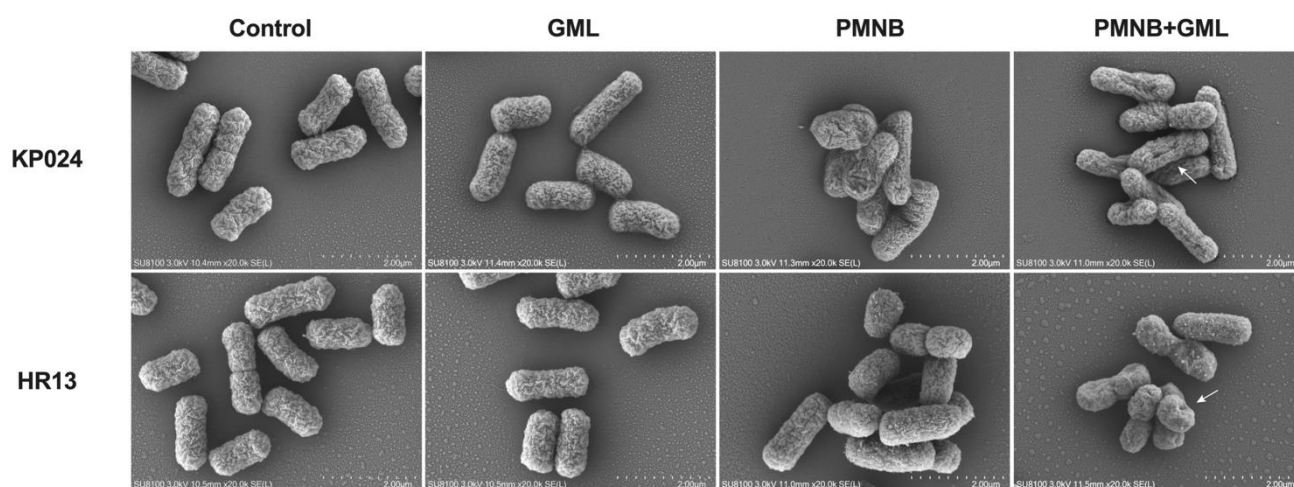


Figure S2. Cellular morphology of *K. pneumoniae* KP024 and *A. baumannii* HR13. SEM images of KP024 and HR13 after treatment with 4× MIC PMNB alone, GML (500 µg/mL) alone or in combination.

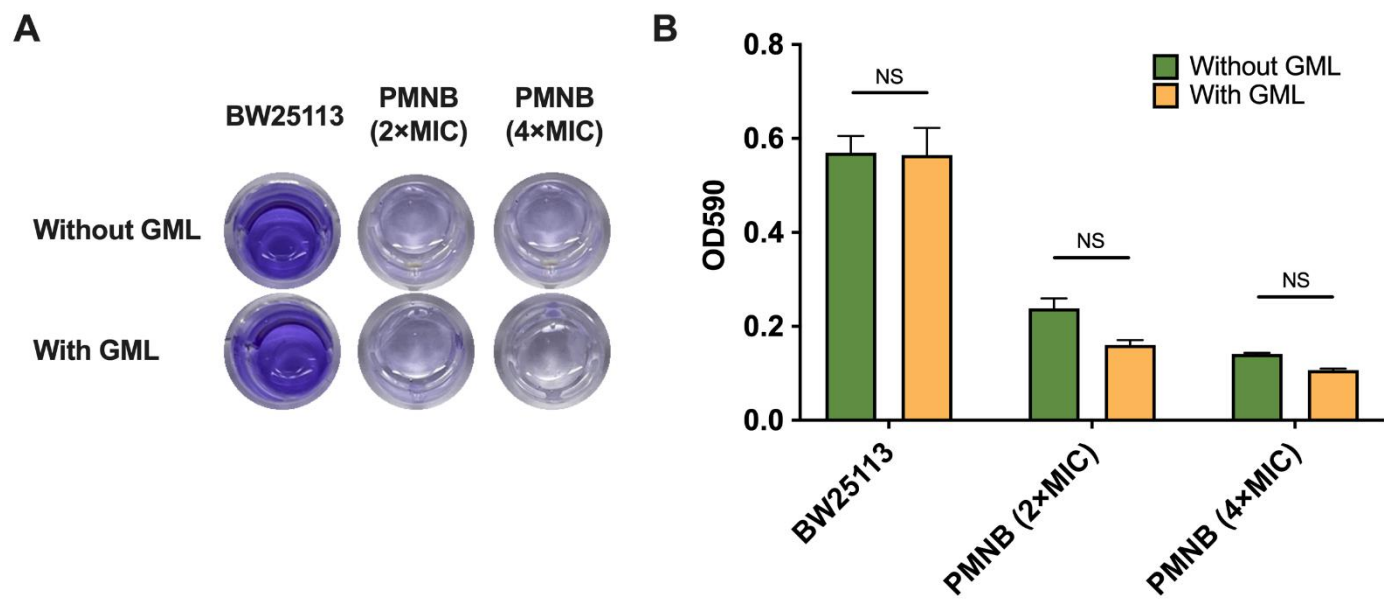


Figure S3. Impact of PMNB and GML on biofilm formation. **(A)** Crystal violet staining of *E. coli* BW25113 with different treatments. **(B)** Biomass quantification of biofilms by measurement of absorbance at 590 nm. PMNB, polymyxin B; GML, glycerol monolaurate.

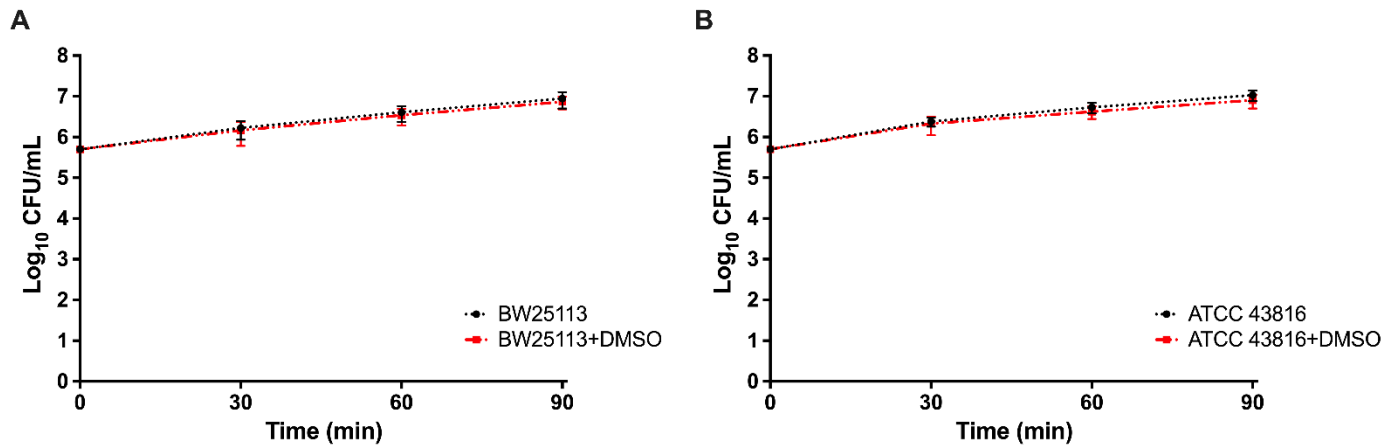


Figure S4. The effect of DMSO on (A) *E. coli* BW25113 and (B) *K. pneumoniae* ATCC 43816 growth kinetics. The addition of DMSO (5 %) alone did not alter bacterial growth *in vitro*. Results are representative of three independent experiments; error bars represent the standard errors of the means. P values (compared to untreated) are > 0.05.