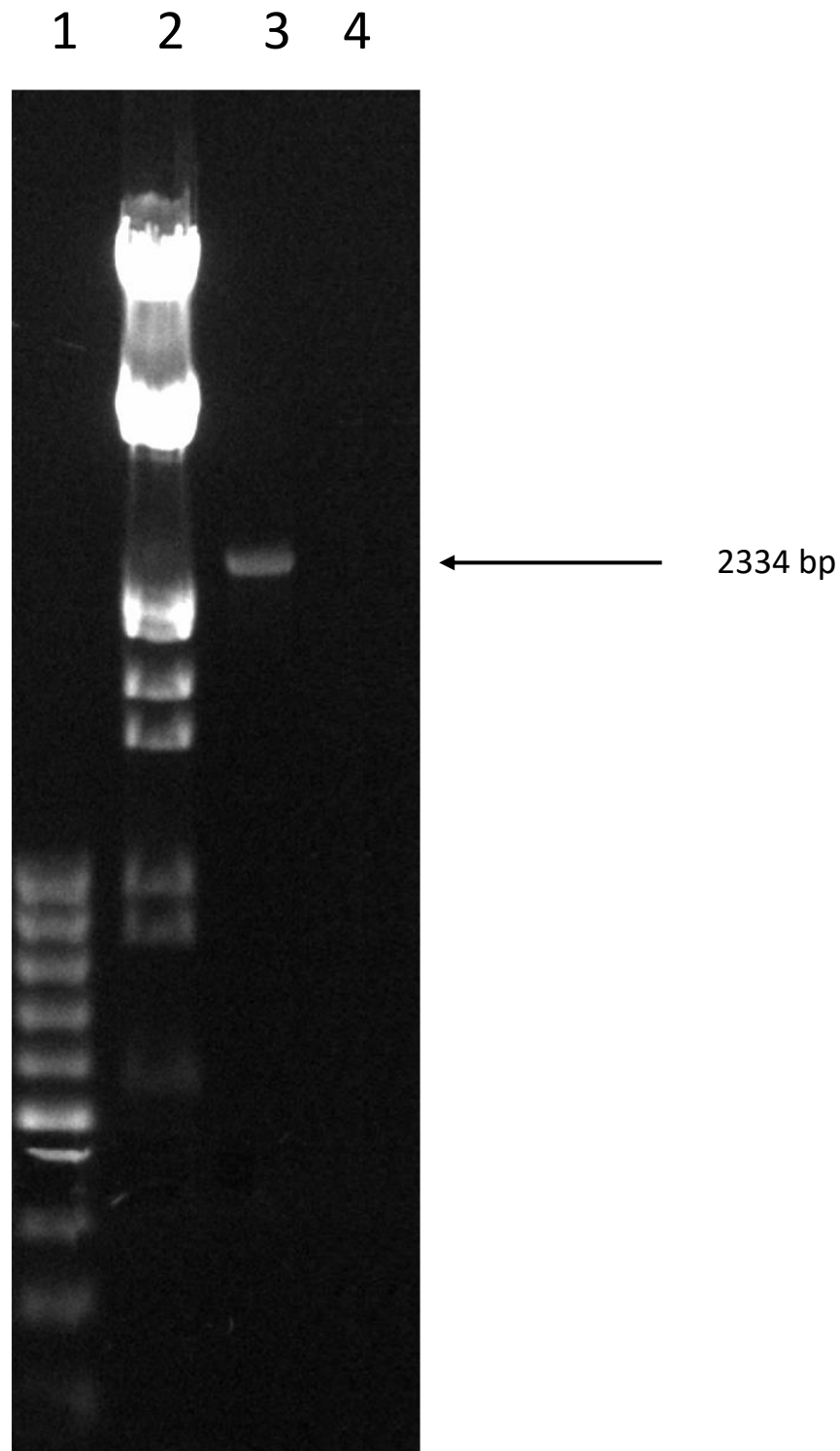


**Figure S1: Detection and amplification of rDNA complex region of *Piscinoodinium sp.* by PCR**



Lane 1 – 100 bp marker

Lane 2 – Lambda DNA/EcoR I/Hind III Double Digest marker

Lane 3 - *Piscinoodinium sp.* collected from the gill of *Arulius barb*

Lane 4 – Non-template control