

Figure S1. Recombinant TES-26 protein verification. (A) SDS-PAGE profile of rTES-26 protein. (B) Western blot of rTES-26 protein.

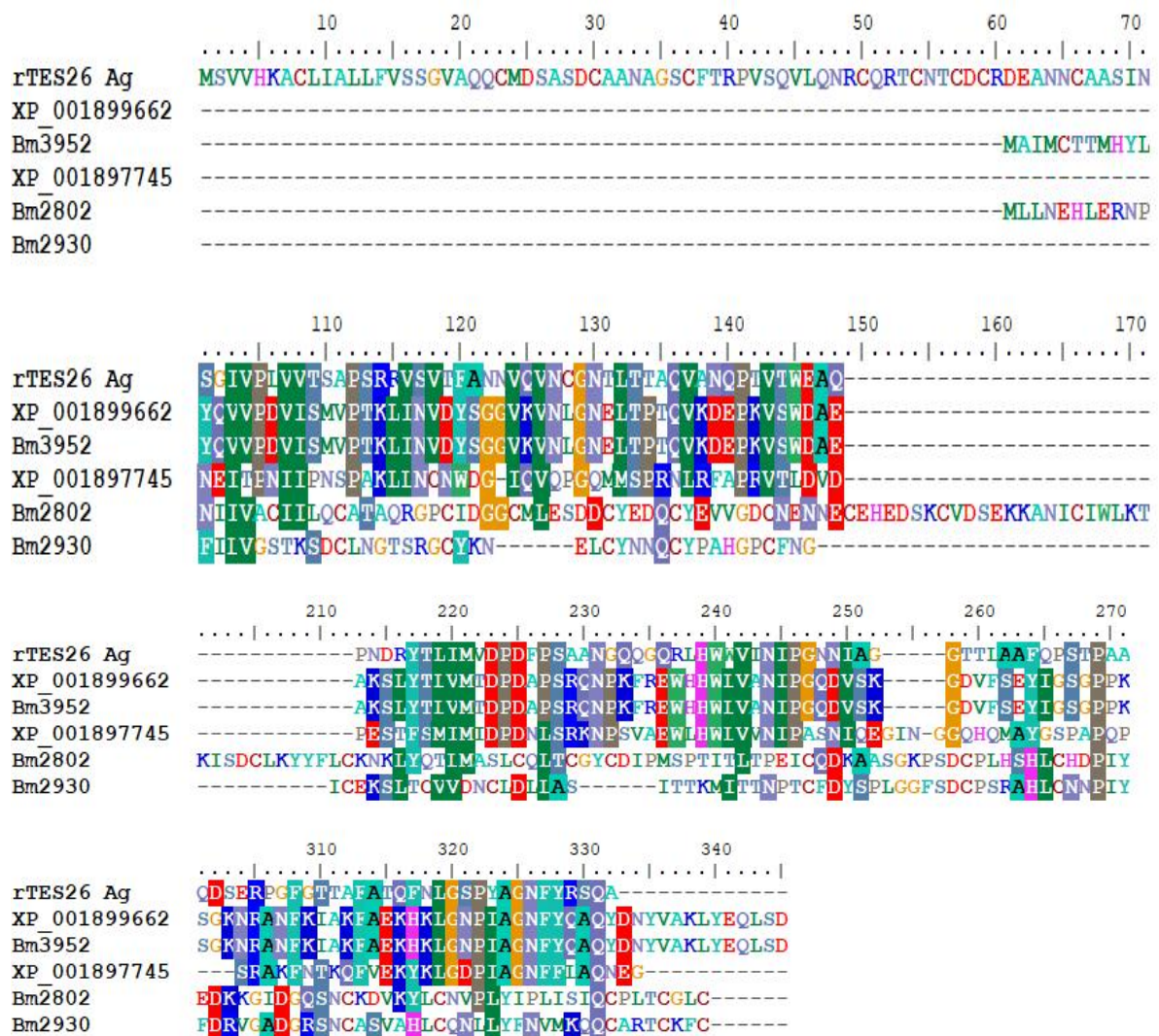
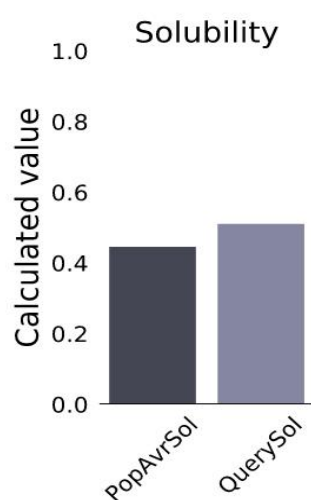


Figure S2. ClustalW alignment of rTES26 antigen against *B. malayi* proteins.

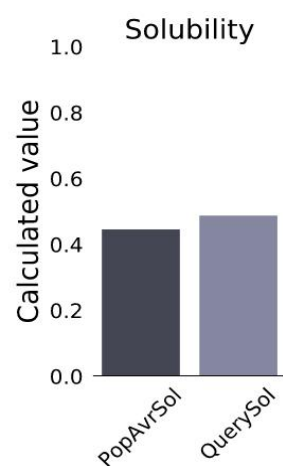


Protein: Clone 49

Predicted scaled solubility:

0.511

pI: 8.780



Protein: Clone 48

Predicted scaled solubility:

0.498

pI: 9.560

Figure S3. The Protein–Sol calculation for clone 49 and clone 48