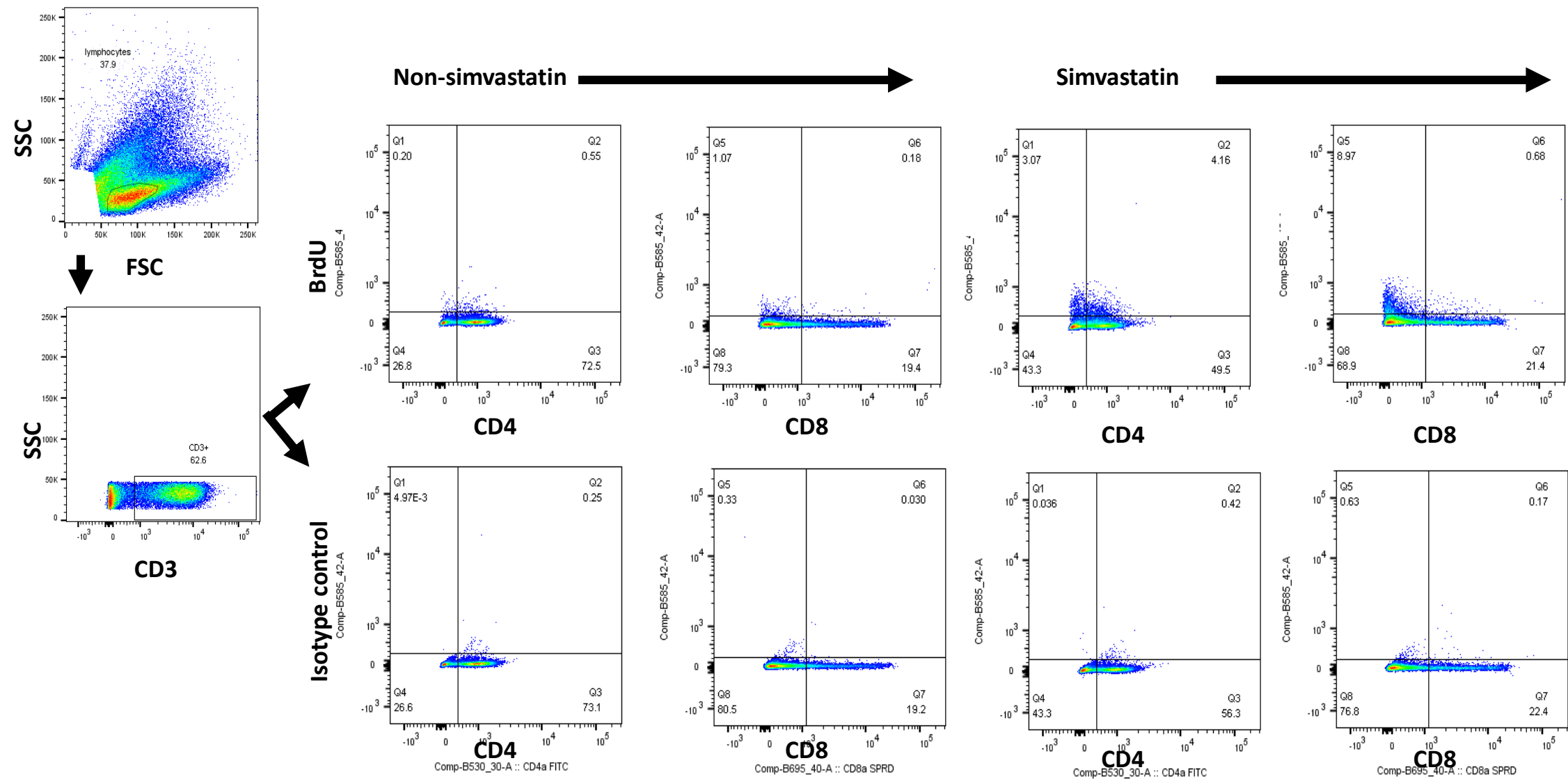
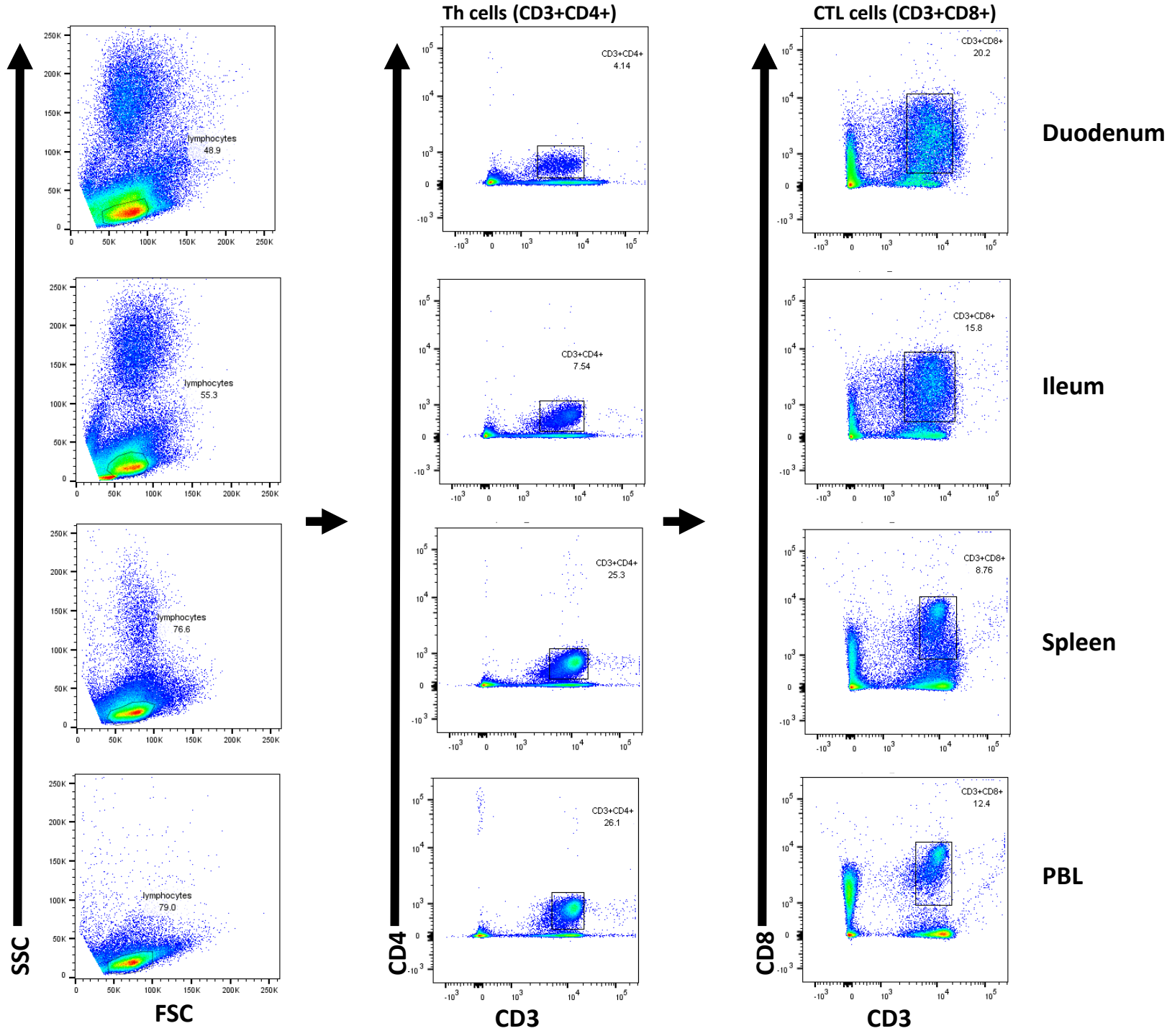
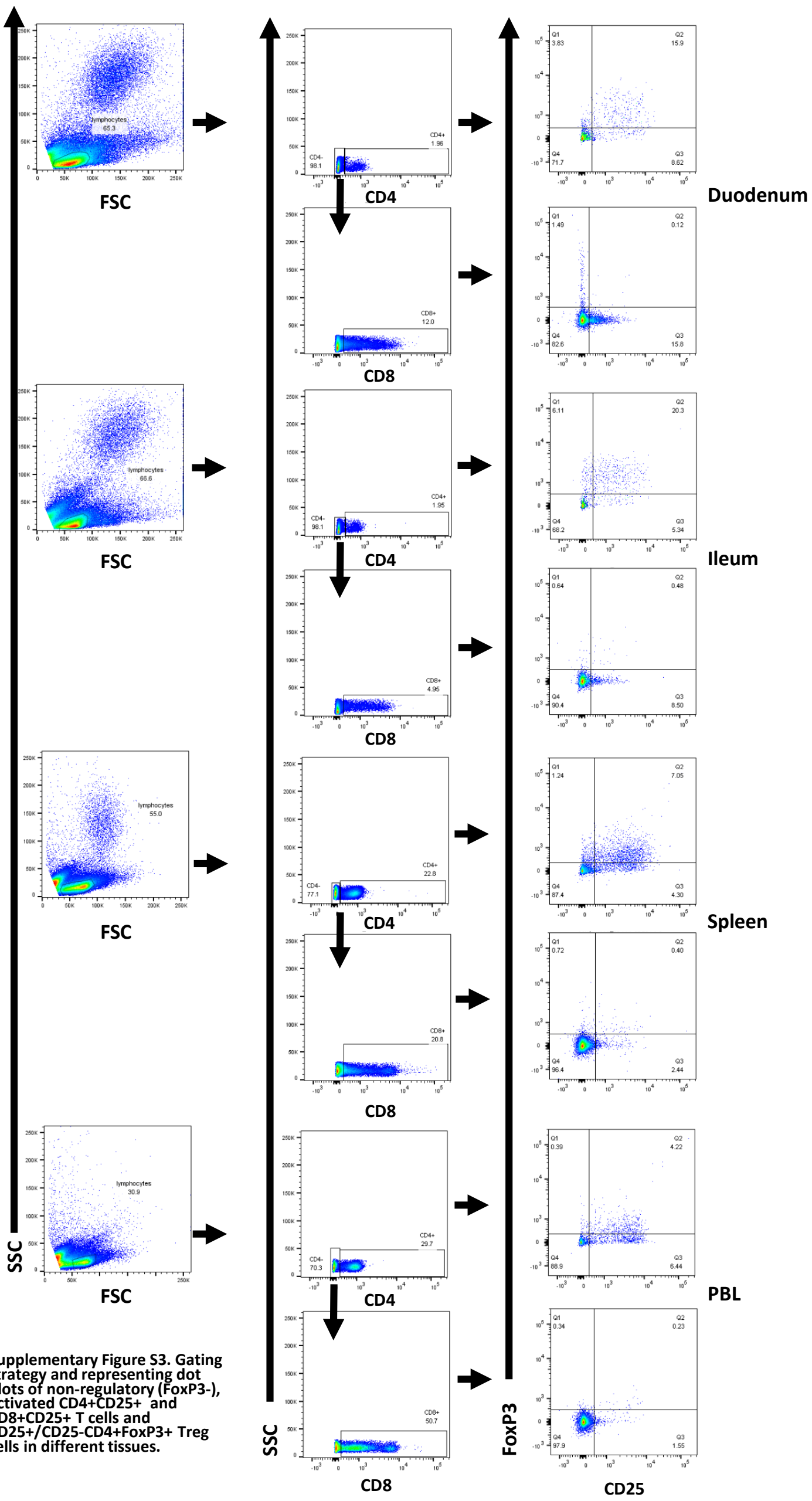


Supplementary Figure S1. Gating and staining strategy for CD3+CD4+BrdU+ and CD3+CD8+ BrdU+ T cells



Supplementary Figure S2. Gating strategy and representing dot plots of Th and CTL in different tissues.





Supplementary Figure S4
Gating strategy and
representing dot plots of IFN-
 γ + cells among CD3+CD4+
and CD3+CD8+ cells in
different tissues.

