

Supplementary Material

Table S1. Clinical outcomes according to availability of viral load information in Mexican persons living with HIV, 2017-2019.

Outcome		experienced +resistant n=20		experienced +non-resistant n=211		naïve +resistant n=165		naïve +non-resistant n=1427		Total N=1823	
		N	VS, n(%) ¹	N	VS, n (%)	N	VS, n(%)	N	VS, n(%)	N	VS, n (%)
With viral load Information	In Care	10	5 (50%)	128	82 (64%)	118	91 (77%)	1003	843 (84%)	1259	1021 (81%)
	LTFU	3	0 (0%)	44	8 (18%)	27	9 (33%)	256	77 (30%)	330	94 (28%)
	Death	1	0 (0%)	7	2 (28%)	5	0 (0%)	35	9 (26%)	48	11 (23%)
	<i>Total</i>	14 (70%)		179 (85%)		150 (91%)		1294 (91%)		1637 (89%)	
Without viral load information	In Care	1		4		0		12		17	
	LTFU	3		18		13		81		115	
	Death	2		10		2		40		54	
	<i>Total</i>	6 (30%)		32 (15%)		15 (9%)		133 (9%)		186 (10%)	

VS, viral suppression: last viral load <200 copies/ml at the end of follow-up among persons with viral load information available within 6 months prior to the last database entry. ¹n(%): number and percentage of persons with viral suppression in each outcome and availability of viral load information status. LTFU, lost to follow-up: defined as persons with a non-active status due to ART abandonment, migration to other healthcare systems, unknown status, as well as lack of viral load follow-up for more than 6 months at the dataset closure date.

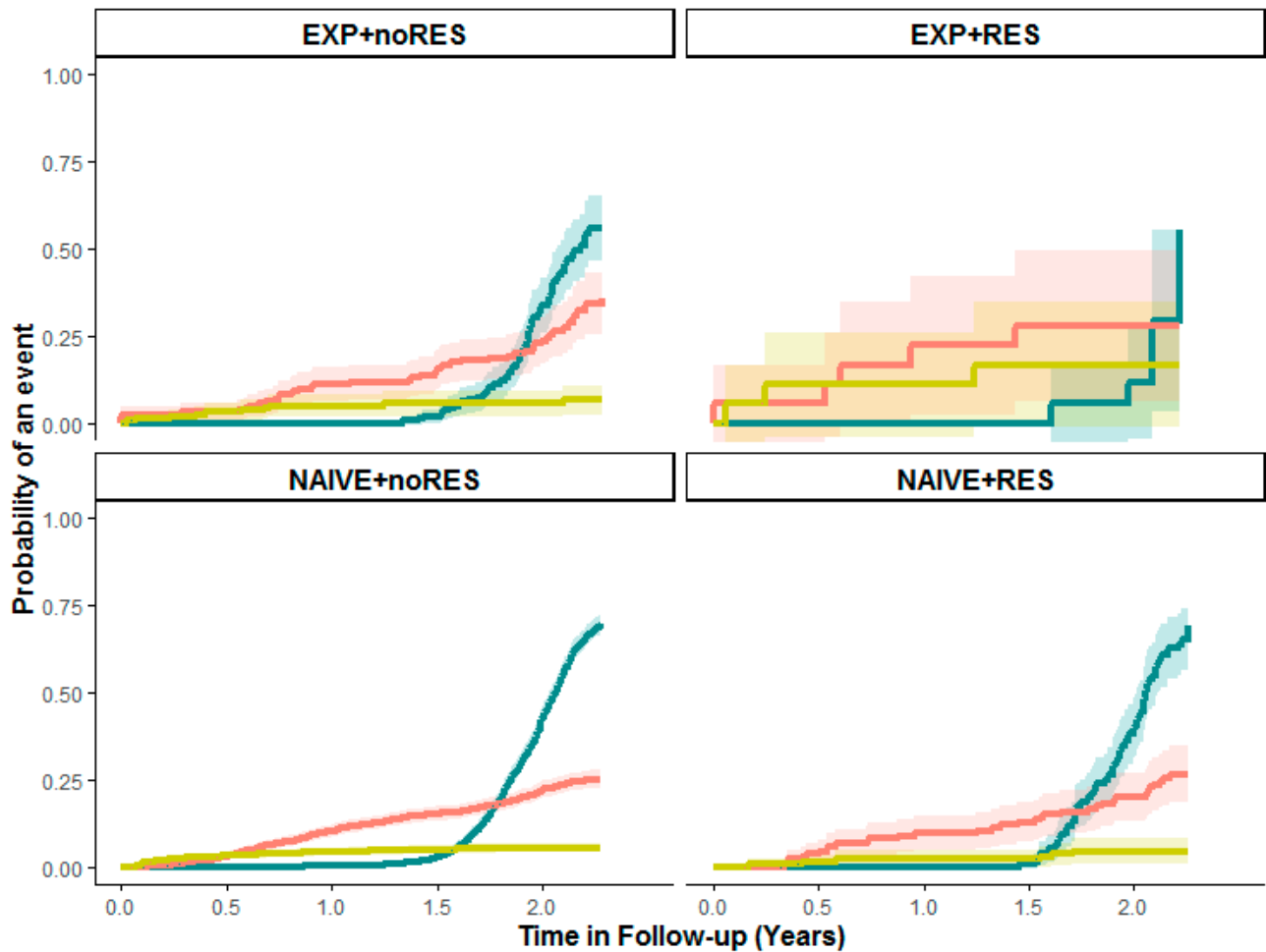


Figure S1. Estimated probability for remaining in care under viral suppression in competing risk with death and LTFU.

Note: Groups according to prior ART exposure and presence of NNRTI-PDR: EXP+noRES: experienced+non-resistant, EXP+RES: experienced+resistant, NAIVE+noRES: naive+non-resistant and NAIVE+RES: naive+resistant. Event: Viral suppression (dark green): participants with last viral load <200 copies/ml at the end of follow-up among persons with viral load information available within 6 months prior to the last database entry. LTFU, lost to follow-up (pink): defined as persons with a non-active status due to ART abandonment, migration to other healthcare systems, unknown status, as well as lack of viral load follow-up for more than 6 months at the dataset closure date. Death (light green).

Estimations from Fine Gray competing risk model are shown according to prior exposure to antiretroviral treatment+efavirenz/nevirapine resistance groups. The event of staying in care without viral suppression was censored. viral suppression: last viral load <200 copies/ml at the end of follow-up among persons with viral load information available within 6 months prior to the last database entry. LTFU, lost to follow-up: defined as persons with a non-active status due to ART abandonment, migration to other healthcare systems, unknown status, as well as lack of viral load follow-up for more than 6 months at the dataset closure date.