

Figure S1. Typical engineering stress-strain curves of CoCrNi_{1.5}Nb_{0.2} HEAs cold-rolled + annealed at 800 °C for 1 h, and 1000 °C for 3 min, respectively.

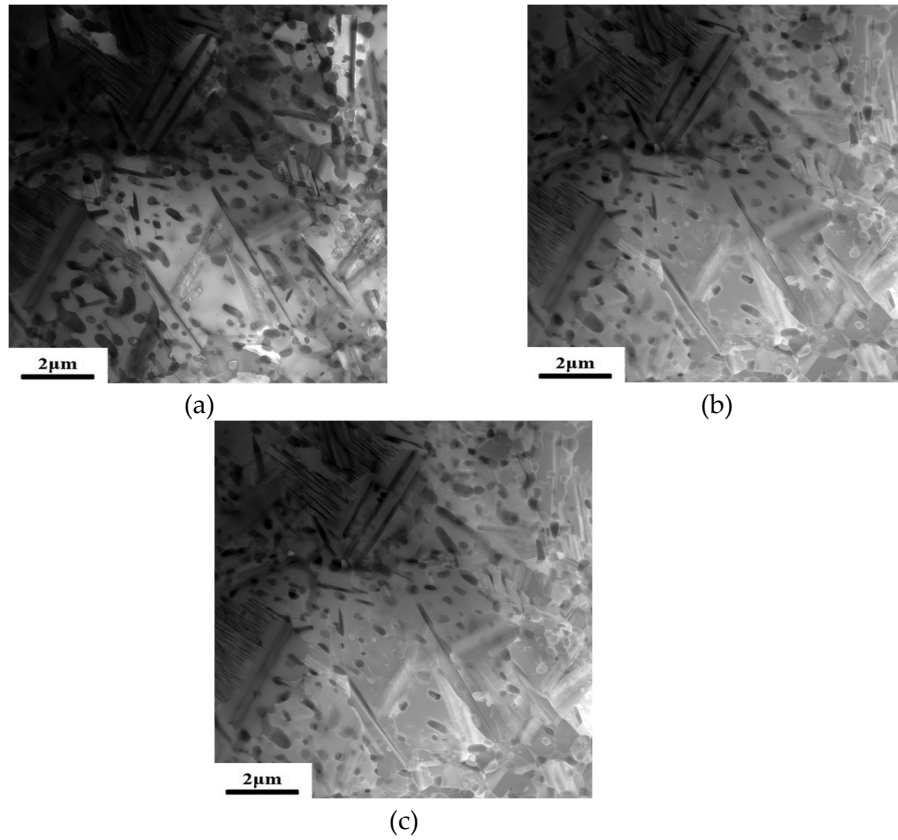


Figure S2. Microstructures in the CR+AN+AG CoCrNi_{1.5}Nb_{0.2} HEA: (a–c) STEM DF2, DF4 and HAADF micrographs, corresponding to ABF micrograph in Figure 4a.